



THE PROPERTY
EXPLORER



10 Olivers Close, Bramley, Tadley, Hampshire, RG26 5UL
£1,300 Per Month





10 Olivers Close, Bramley, Tadley, Hampshire, RG26 5UL

£1,300 Per Month

Explorer Lettings are delighted to offer to the market this immaculately presented two double bedroom, two bathroom split level apartment situated in the beautiful village of Bramley in Hampshire, with excellent links to the A33, M3, M4 and both Basingstoke and Reading. Council Tax Band C. Unfurnished, Regret NO PETS.

Please note photos are stock photos from before the previous tenant moved in.

Tenant Information: Assuming rent agreed at £1,300.00 per month the Holding Deposit £300.00 is payable once offer accepted 'Subject to contract' to go towards first months rent and 5 x weeks Security Deposit £1,500.00 + Remaining First months rent £1,200.00 payable 2 working days before check in.

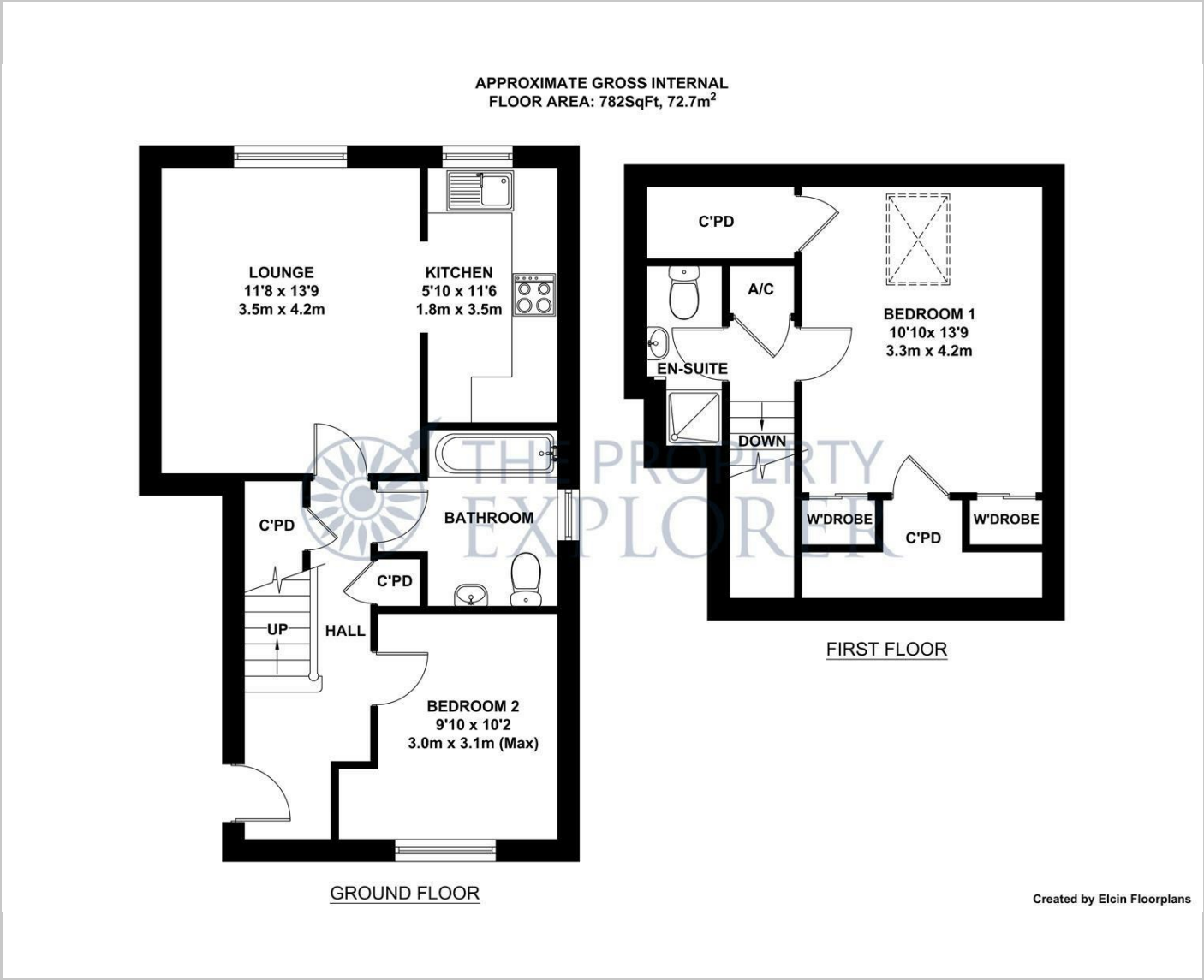
NB. Applicants must earn min 30 x rental (£1,300 pcm x 30) = £39,000 household income per year

- 2 DOUBLE BEDROOMS
- GARAGE
- ENSUITE TO MASTER
- IMMACULATE THROUGHOUT
- PRIVATE GARDEN
- AVAILABLE 29th NOVEMBER 2022

Unfurnished
Council Tax Band: C
Available:
Deposit: £1,500



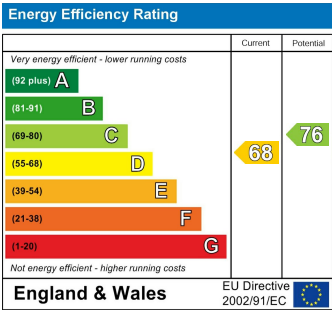
Floor Plans



Area Map



Energy Performance Graph



These particulars, whilst believed to be accurate are set out as a general outline only for guidance and do not constitute any part of an offer or contract. Intending purchasers should not rely on them as statements of representation of fact, but must satisfy themselves by inspection or otherwise as to their accuracy. No person in this firms employment has the authority to make or give any representation or warranty in respect of the property.