



THE PROPERTY
EXPLORER



23 Tasmania Close
, Basingstoke, RG24 9PQ

£1,450 Per Month



3



0



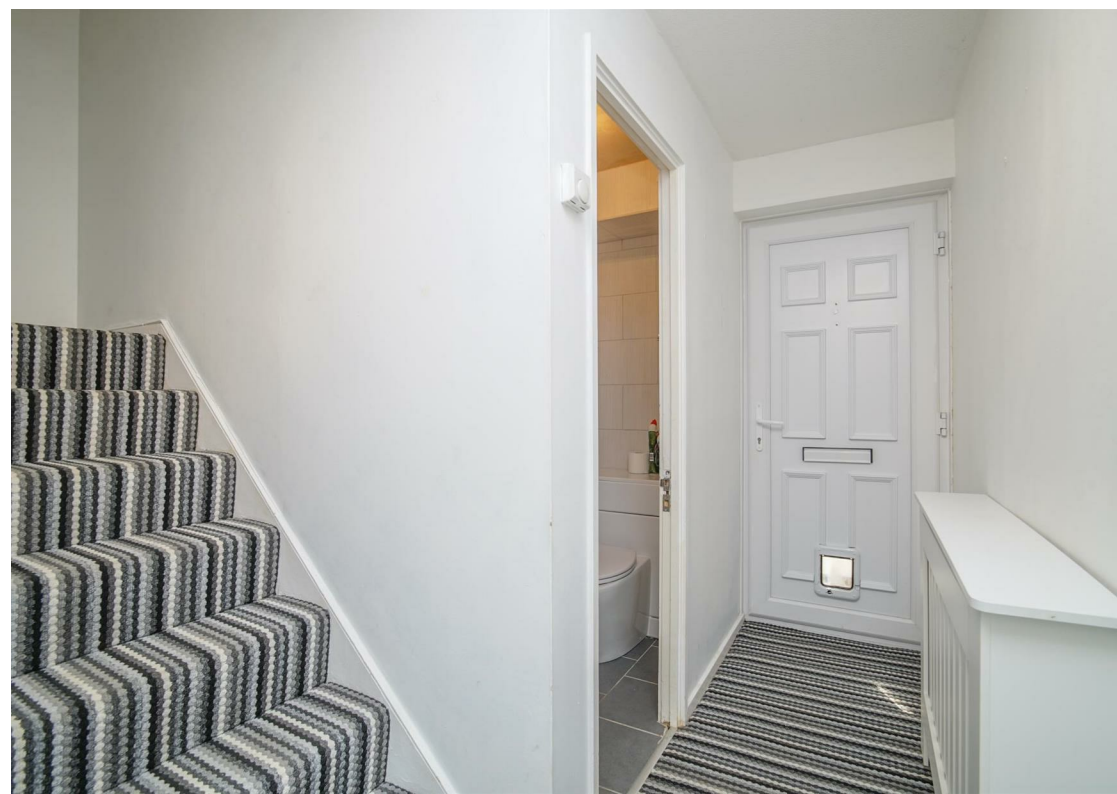
0



C

23 Tasmania Close , Basingstoke, RG24 9PQ

- Three bedrooms
- Low maintenance garden
- Available immediately
- Unfurnished

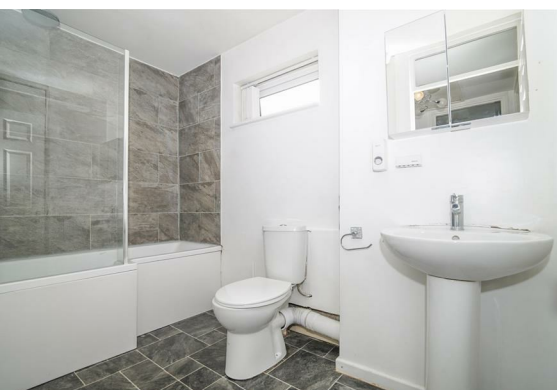




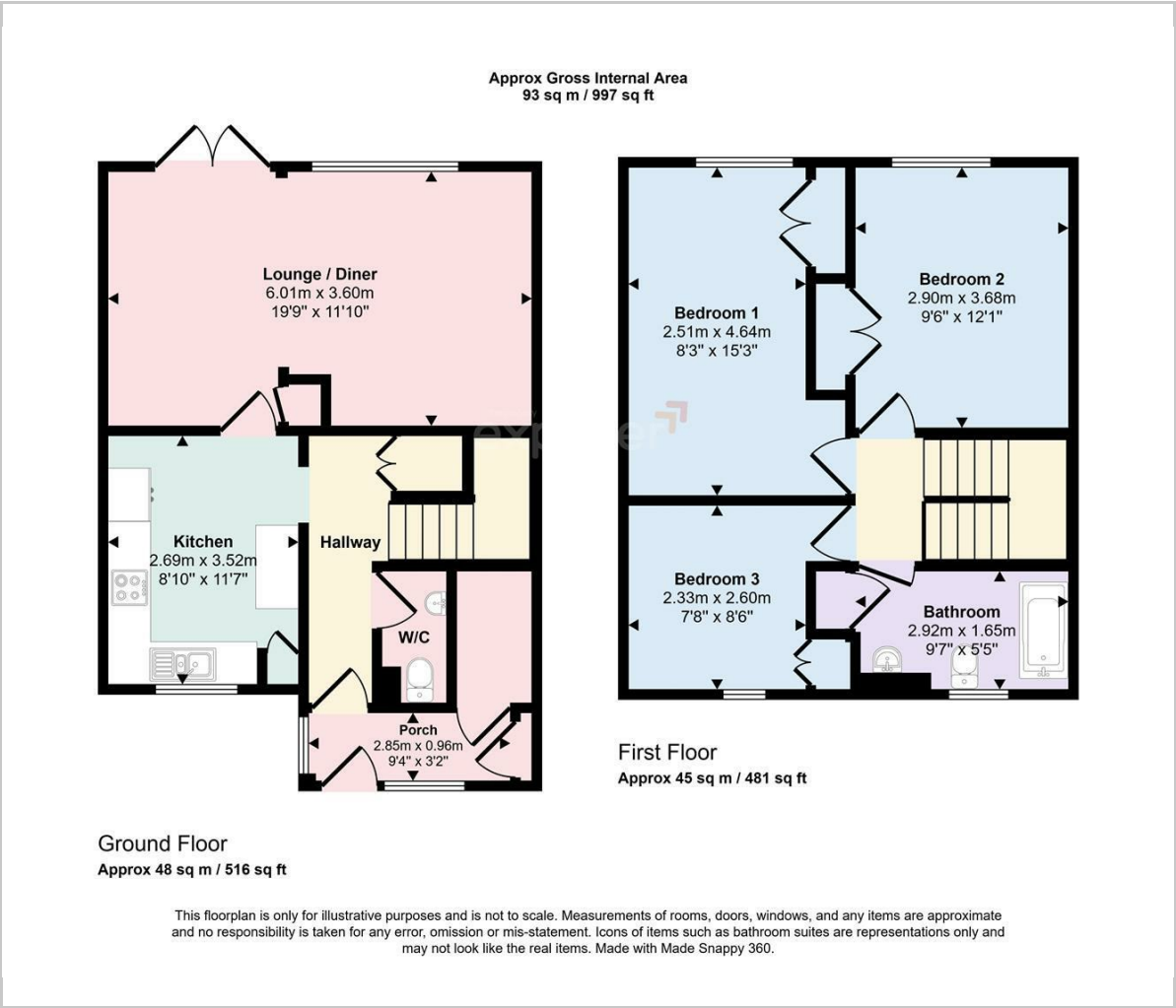
AVAILABLE IMMEDIATELY - EXPLORER - This recently decorated property features a good-sized kitchen and lounge area, a porch with storage, three bedrooms with built-in wardrobes, a family bathroom with a shower, and a convenient downstairs bathroom. Additional benefits include recently fitted carpets and an enclosed low maintenance garden. **COMMUNAL PARKING, UNFURNISHED, COUNCIL TAX BAND C.**

Tenant Information: Assuming rent agreed at £1,450.00 per month the Holding Deposit £334.61 is payable once offer accepted 'Subject to contract' to go towards first months rent and 5 x weeks Security Deposit £1673.07 + Remaining First months rent £1115.39 payable 2 working days before check in.

NB. Applicants must earn min 30 x rental (£1,450 pcm x 30) = £43,500 household income per year



Floor Plan



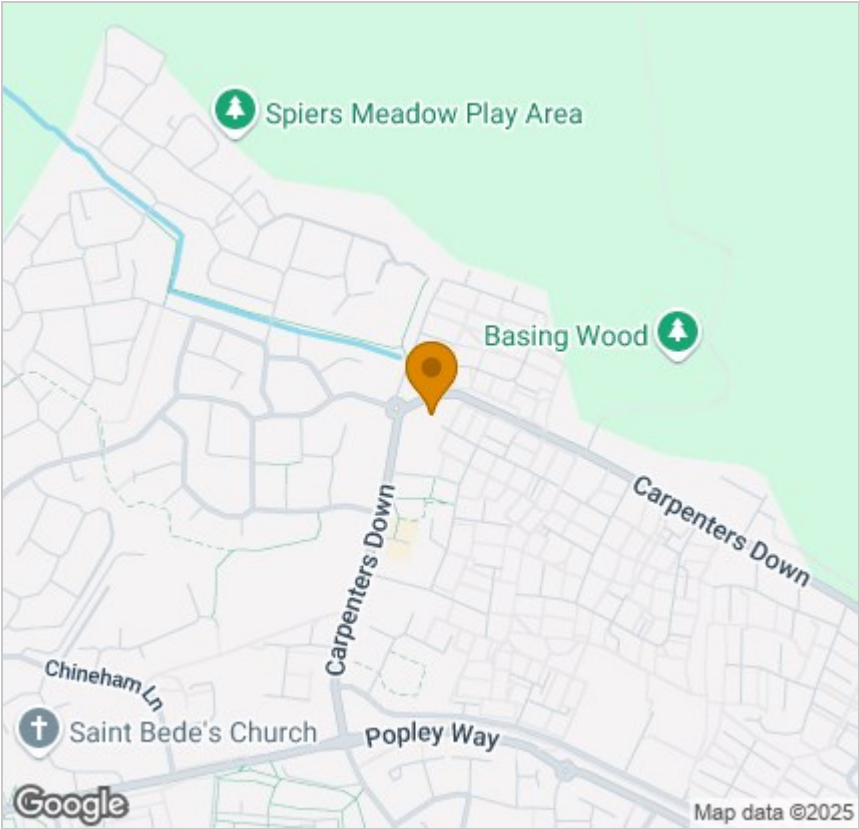
Viewing

Please contact our The Property Explorer Office on 01256 321777 if you wish to arrange a viewing appointment for this property or require further information.

These particulars, whilst believed to be accurate are set out as a general outline only for guidance and do not constitute any part of an offer or contract. Intending purchasers should not rely on them as statements of representation of fact, but must satisfy themselves by inspection or otherwise as to their accuracy. No person in this firms employment has the authority to make or give any representation or warranty in respect of the property.

Arena Business Centre, Suite GF11 The Square, Basing View, Basingstoke, Hampshire, RG21 4EB
Tel: 01256 321777 Email: hello@thepropertyexplorer.co.uk <https://www.thepropertyexplorer.co.uk>

Area Map



Energy Efficiency Graph

