



22 Mallory Road
, Basingstoke, RG24 9GB

£1,700



22 Mallory Road , Basingstoke, RG24 9GB

- 3 Storey End Terraced Family Home
- Modern Kitchen
- Spacious Living Area
- 2 Bathrooms
- Unfurnished
- Available from 28/04/2025
- Garage





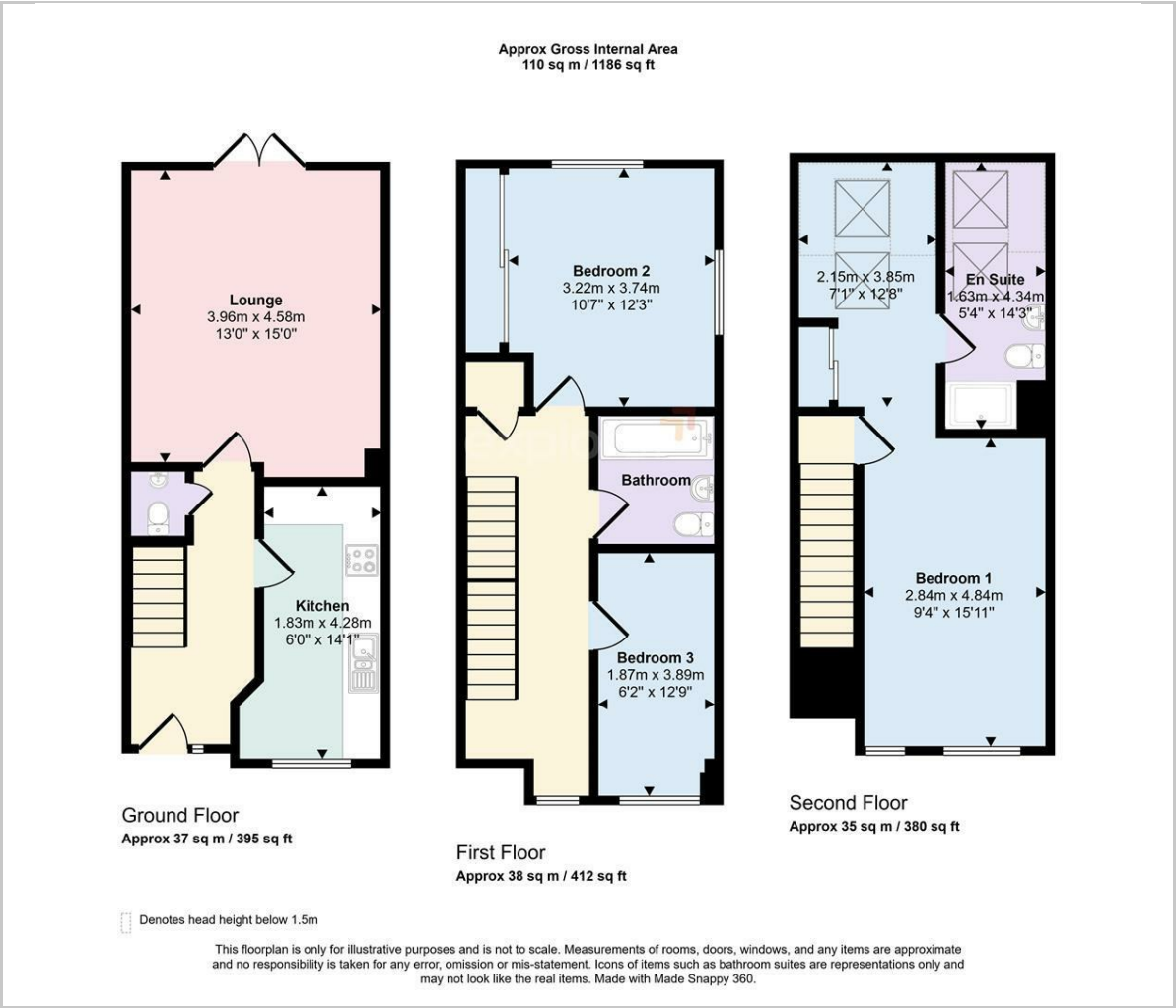
Explorer Lettings are pleased to present this spacious three-storey end-of-terrace home. The ground floor features a modern kitchen, open-plan lounge/diner with French doors to the garden, and a W/C. The first floor offers two bedrooms and a stylish bathroom, with stairs leading to a generous top-floor master with en-suite. The property also benefits from a garage, 1 x parking space, gas central heating, and a peaceful outlook over a green. Unfurnished, regret no pets, Council Tax Band D. Available from 28/04/2025.

Tenant Information: Assuming rent agreed at £1,700.00 per month the Holding Deposit £392.30 is payable once offer accepted 'Subject to contract' to go towards first months rent and 5 x weeks Security Deposit £1961.53 + Remaining First months rent £1307.70 payable 2 working days before check in.

NB. Applicants must earn min 30 x rental (£1,700 pcm x 30) = £51,000 household income per year



Floor Plan



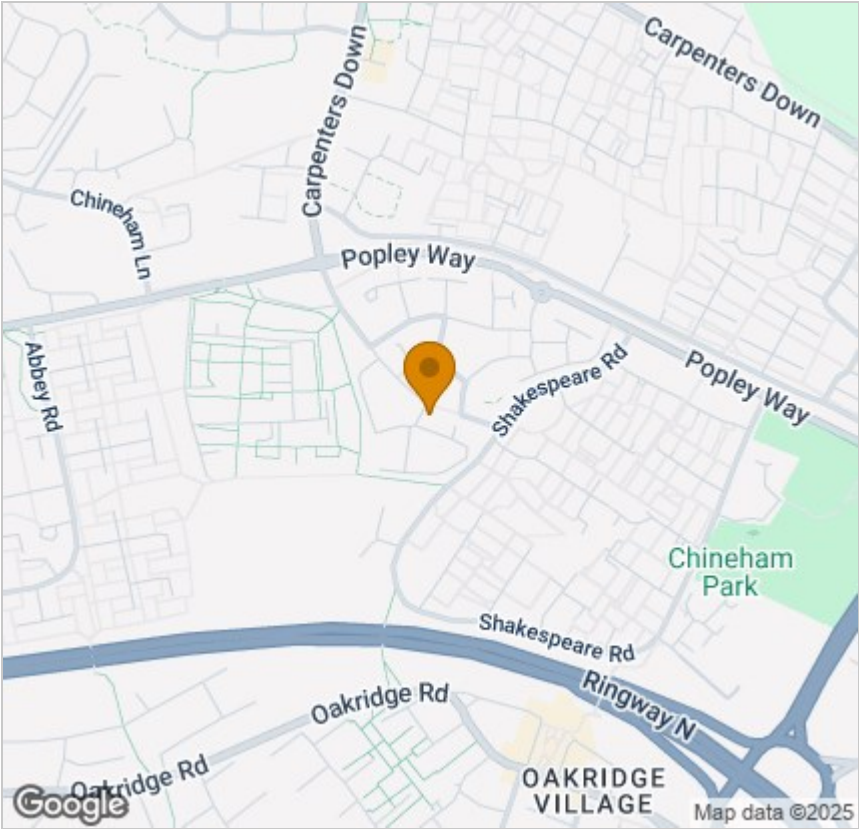
Viewing

Please contact our The Property Explorer Office on 01256 321777 if you wish to arrange a viewing appointment for this property or require further information.

These particulars, whilst believed to be accurate are set out as a general outline only for guidance and do not constitute any part of an offer or contract. Intending purchasers should not rely on them as statements of representation of fact, but must satisfy themselves by inspection or otherwise as to their accuracy. No person in this firms employment has the authority to make or give any representation or warranty in respect of the property.

Arena Business Centre, Suite GF11 The Square, Basing View, Basingstoke, Hampshire, RG21 4EB
Tel: 01256 321777 Email: hello@thepropertyexplorer.co.uk <https://www.thepropertyexplorer.co.uk>

Area Map



Energy Efficiency Graph

