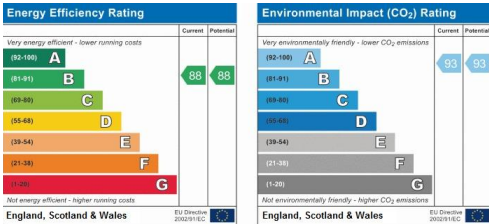
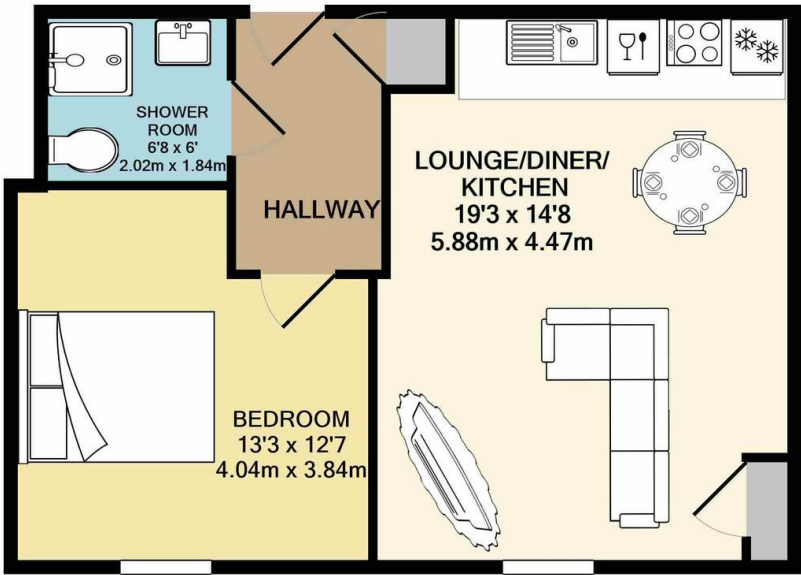


Plough Court

14 Ealing Road, Northolt, , UB5 5HT

£1,250 pcm

Property Summary



- Apartment
- Second Floor
- Lift Access
- One bedroom
- Open plan kitchen
- Shower room
- Carpeted bedroom
- Electrical heating and cooker
- Parking area
- Available immediately

TOTAL APPROX. FLOOR AREA 520 SQ.FT. (48.3 SQ.M.)

Whilst every attempt has been made to ensure the accuracy of the floor plan contained here, measurements of doors, windows, rooms and any other items are approximate and no responsibility is taken for any error, omission, or mis-statement. This plan is for illustrative purposes only and should be used as such by any prospective purchaser. The services, systems and appliances shown have not been tested and no guarantee as to their operability or efficiency can be given

Made with Metropix ©2019

38 Court Parade
Wembley
Middlesex
HA0 3HS

www.propertyhubltd.com
info@propertyhubltd.com
0208 903 1002

Agents Note: Whilst every care has been taken to prepare these particulars, they are for guidance purposes only. All measurements are approximate are for general guidance purposes only and whilst every care has been taken to ensure their accuracy, they should not be relied upon and potential buyers/tenants are advised to recheck the measurements