

### Sophisticated Modern Detached House

Situated in a prestigious location in West Byfleet, this stunning and sophisticated modern detached house could be your dream home. Recently renovated to the highest standards with supreme specifications, this property exudes timeless modern luxury.

**Exceptional Renovation:** Renovated recently with top-tier specifications.

**Luxurious and Flexible Living Options:** The top floor has been transformed into a luxurious and private master suite, featuring a spacious bathroom and a generously sized walk-in closet, a rare feature in the market.

This versatile space can easily be converted back into two sizable bedrooms and two well-appointed bathrooms, offering the potential to transform the property into a 5-bedroom, 3-bathroom (4-toilet) home. This provides exceptional flexibility to meet your evolving needs and preferences.

**Spacious Living & Open-Plan Kitchen:** Two expansive living rooms, complemented by a generous open-plan kitchen and dining area. The kitchen is equipped to the highest standards, featuring a skylight that fills the space with natural light and an open layout perfect for modern living.

**Detached Garage with Studio Conversion Potential:** Recently built, with a pitched roof, electricity, water, and drainage already installed. This space can be easily converted into a detached studio, perfect for a home office, gym, or guest accommodation.



### Dartnell Park Road, West Byfleet, KT14

 **4-5**  **2** /  **3**

- 2 reception lounges
- 1 Dining area with open-plan kitchen
- 1 study room
- 4 bedrooms
- 1 walk-in closet
- 2 bathrooms plus 1 guest toilet
- Large Utility
- Detached double garage
- Front yard, front garden and rear garden
- EPC rate: D
- Freehold



020 8087 3328

[www.fyffeproperty.com](http://www.fyffeproperty.com)

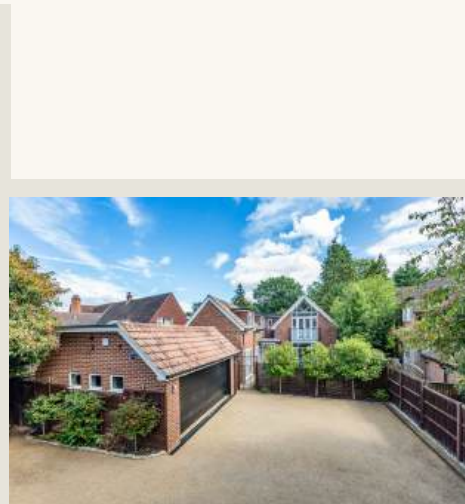
[info@fyffeproperty.com](mailto:info@fyffeproperty.com)

**Bright and Airy:** This property is bright and airy, with an abundance of natural light pouring in through numerous skylights and large windows.

**High Privacy:** Generously sized, landscaped front and back gardens offering high privacy.

**Ample Parking:** In addition to the double garage, the gated front yard, featuring resin flooring, provides parking space for multiple cars.

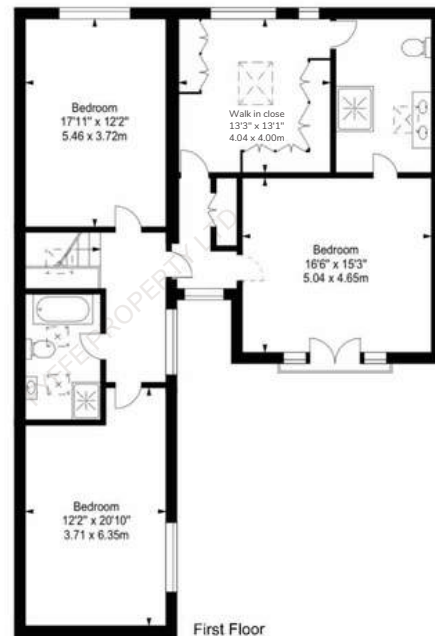
This rare gem combines luxury, privacy, and flexibility, making it the perfect home for those seeking a property with both character and potential. Don't miss out on the opportunity to make this dream home yours.



020 8087 3328  
[www.fyffeproperty.com](http://www.fyffeproperty.com)  
[info@fyffeproperty.com](mailto:info@fyffeproperty.com)

Approx.Area: 3,462 sq ft / 321.6 sq m

Not presented to scale



Every effort has been made to ensure accuracy; however, all measurements are intended for illustrative purpose only. There is not presented to:

020 8087 3328

[www.fyffeproperty.com](http://www.fyffeproperty.com)

[info@fyffeproperty.com](mailto:info@fyffeproperty.com)