

3 Bedroom home with parking

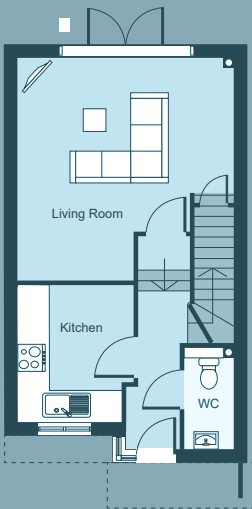
TOTAL AREA: 101.7M² | 1094SQFT



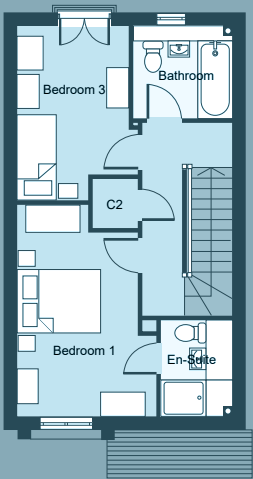
Floorplans

3 BEDROOM HOME WITH PARKING

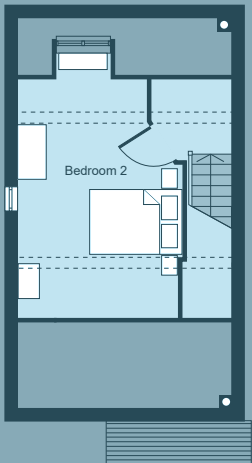
TOTAL AREA: 101.7M² | 1094SQFT



GROUND FLOOR



FIRST FLOOR



SECOND FLOOR

Kitchen	3m x 2.3m / 9'8" x 7'5"	Bedroom 1	4.7m x 3.1m / 15'4" x 10'2"	Bedroom 2	4.6m x 3.6m / 15'0" x 11'8"
Living Room	4.9m x 3.7m / 16'0" x 12'1"	Bedroom 3	3.8m x 2.5m / 12'5" x 8'2"		
WC	2.2m x 1m / 7'2" x 3'2"	En-suite	2.2m x 1.6m / 7'2" x 5'2"		
		Bathroom	2m x 2.2m / 6'6" x 7'2"		



Plot 26

3 Bedroom home with parking

TOTAL AREA: 104.4M² | 1123SQFT

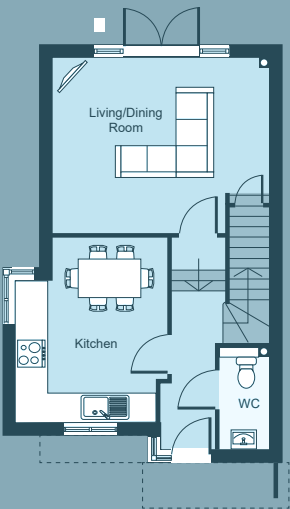


WWW.RODDYNEWHOMES.CO.UK

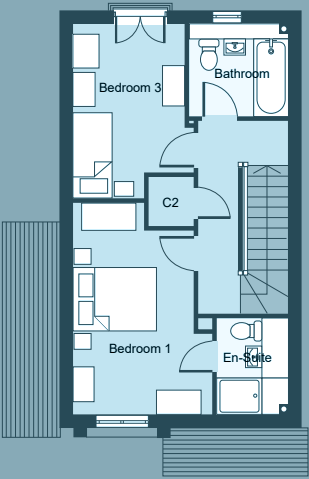
Floorplans

3 BEDROOM HOME WITH PARKING

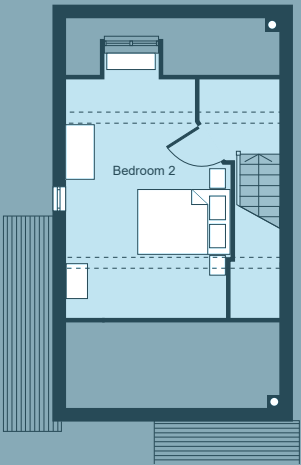
TOTAL AREA: 104.4M² | 1123SQFT



GROUND FLOOR



FIRST FLOOR



SECOND FLOOR

Kitchen	3m x 2.3m / 9'8" x 7'5"	Bedroom 1	4.7m x 3.1m / 15'4" x 10'2"	Bedroom 2	4.6m x 3.6m / 15'0" x 11'8"
Living Room	4.9m x 3.7m / 16'0" x 12'1"	Bedroom 3	3.8m x 2.5m / 12'5" x 8'2"		
WC	2.2m x 1m / 7'2" x 3'2"	En-suite	2.2m x 1.6m / 7'2" x 5'2"		
		Bathroom	2m x 2.2m / 6'6" x 7'2"		



Plot 25

3 Bedroom home with parking

TOTAL AREA: 107.5M² | 1157SQFT

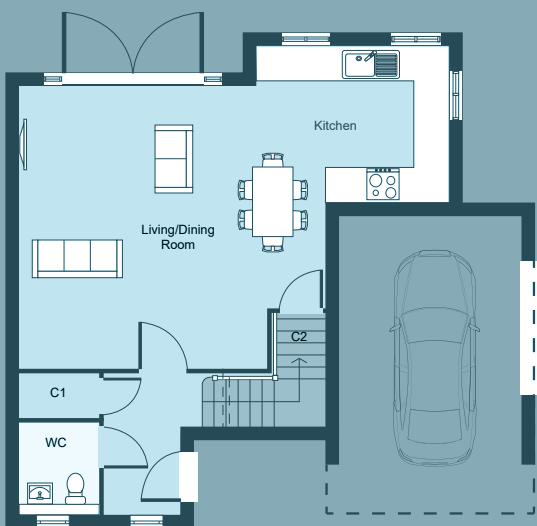
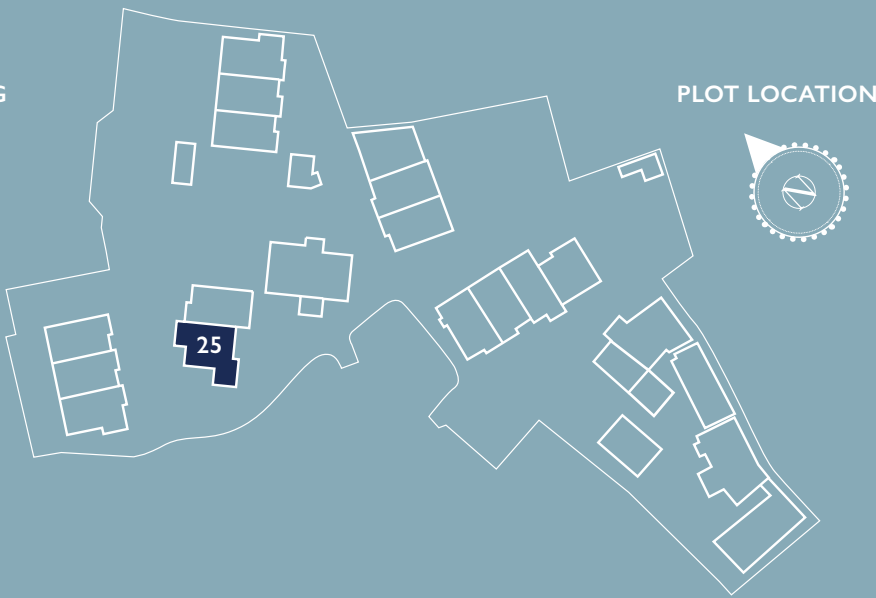


WWW.RODDYNEWHOMES.CO.UK

Floorplans

3 BEDROOM HOME WITH PARKING

TOTAL AREA: 107.5M² | 1157SQFT



GROUND FLOOR

Kitchen/Dining/Living	5.2m x 7.9m / 17'0" x 26'0"
Car Parking Space	5m x 3.2m / 16'4" x 10'5"
WC	1.7m x 1.4m / 5'6" x 4'6"



FIRST FLOOR

Bedroom 1	5.3m x 3.4m / 17'4" x 11'1"
Bedroom 2	3.5m x 4.3m / 11'5" x 14'1"
Bedroom 3	2.7m x 3.3m / 8'8" x 10'8"
En-suite	3m x 2m / 9'8" x 6'6"
Bathroom	2.5m x 1.4m / 8'2" x 4'6"



Plot 24

3 Bedroom home with parking

TOTAL AREA: 101.7M² | 1094SQFT

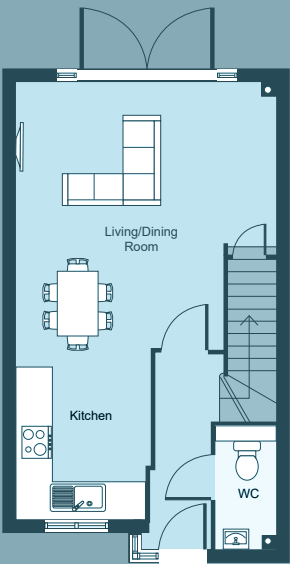


WWW.RODDYNEWHOMES.CO.UK

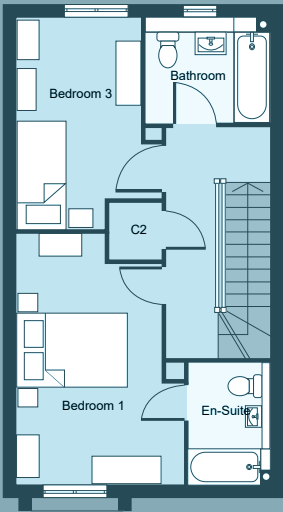
Floorplans

3 BEDROOM HOME WITH PARKING

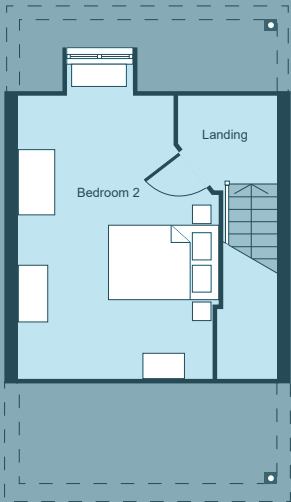
TOTAL AREA: 107.5M² | 1157SQFT



GROUND FLOOR



FIRST FLOOR



SECOND FLOOR

Kitchen/Living/Dining	8.7m x 4.8m / 28'7" x 15'9"
WC	2.2m x 1.2m / 7'3" x 3'11"

Bedroom 1	4.7m x 2.6m / 15'5" x 8'6"
Bedroom 3	3.8m x 2.5m / 12'6" x 8'2"
En-suite	2.2m x 1.6m / 7'3" x 5'3"
Bathroom	2m x 2.2m / 6'7" x 7'3"

Bedroom 2	4.6m x 3.7m / 15'1" x 12'2"
-----------	-----------------------------



Plot 20

2 Bedroom home with parking

TOTAL AREA: 73.3M² | 788SQFT

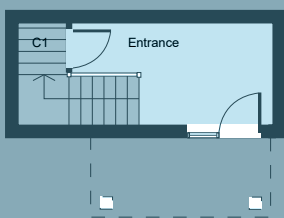
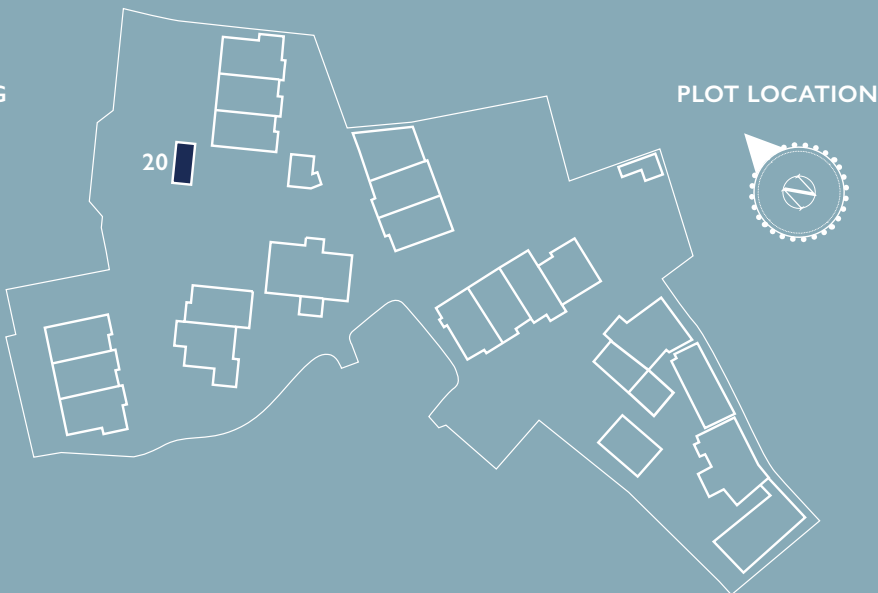


WWW.RODDYNEWHOMES.CO.UK

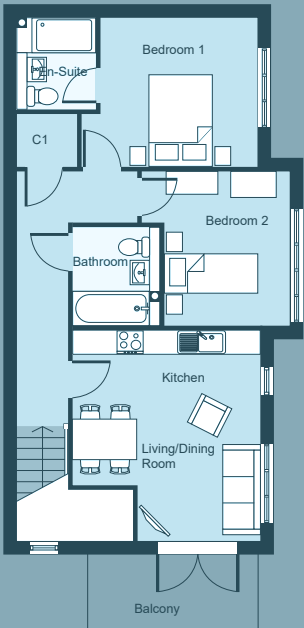
Floorplans

2 BEDROOM HOME WITH PARKING

TOTAL AREA: 73.3M² | 788SQFT



GROUND FLOOR



FIRST FLOOR

Entrance 2.3m x 4m / 7'7" x 13'1"

Kitchen/Dining/Living 4.7m x 4.2m / 15'5" x 13'9"

Bedroom 1 3.2m x 3.8m / 10'6" x 12'6"

Bedroom 2 3.7m x 3.5m / 12'2" x 11'6"

En-suite 2.1m x 1.6m / 6'11" x 5'3"

Bathroom 2.3m x 1.6m / 7'7" x 6'7"

Plot 23

2 Bedroom home with parking

TOTAL AREA: 84.4M² | 908SQFT

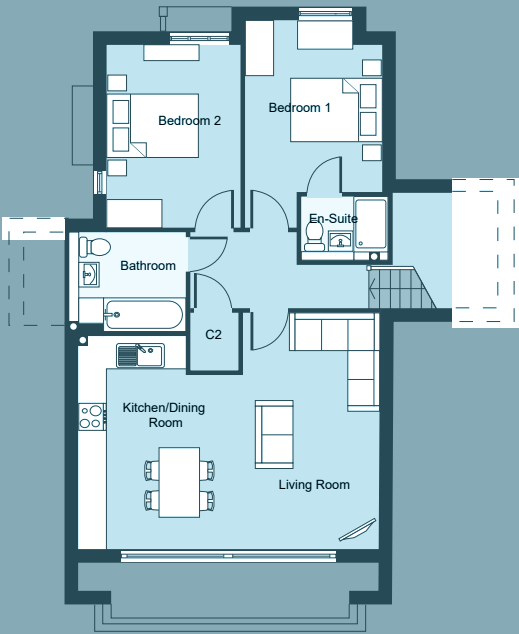


WWW.RODDYNEWHOMES.CO.UK

Floorplans

2 BEDROOM HOME WITH PARKING
TOTAL AREA: 84.4M² | 908SQFT

PLOT LOCATION



GROUND FLOOR

FIRST FLOOR

Entrance 3.4m x 2.1m / 11'2" x 6'11"

Kitchen/Dining/Living	4.9m x 6.7m / 16'1" x 22'0"
Bedroom 1	4.1m x 3m / 13'5" x 9'10"
Bedroom 2	4.1m x 2.9m / 13'5" x 9'6"
En-suite	2.4m x 2.5m / 7'10" x 8'2"
Bathroom	1.5m x 2.1m / 4'11" x 6'11"



Plot 22

2 Bedroom home with parking

TOTAL AREA: 72.4M² | 779SQFT

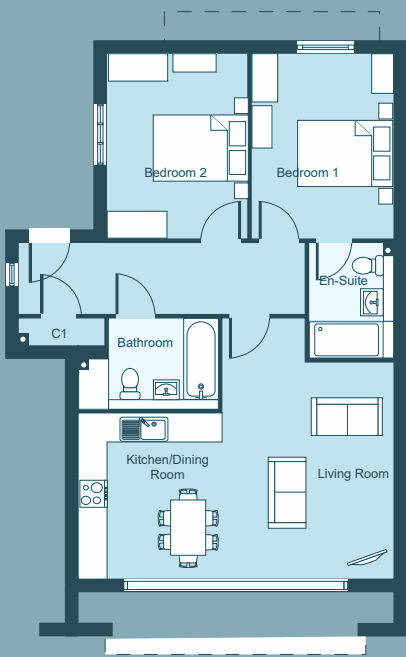


WWW.RODDYNEWHOMES.CO.UK

Floorplans

2 BEDROOM HOME WITH PARKING
TOTAL AREA: 72.4M² | 779SQFT

PLOT LOCATION



GROUND FLOOR

Kitchen/Dining/Living	5.8m x 6.7m / 19'0" x 22'0"
Bedroom 1	4.1m x 3m / 13'5" x 9'10"
Bedroom 2	4.1m x 2.9m / 13'5" x 9'6"
Bathroom	2m x 2.4m / 6'7" x 7'10"
En-Suite	2.2m x 2.3m / 7'3" x 7'7"



Plot 21

2 Bedroom home with parking

TOTAL AREA: 95.9M² | 1032SQFT

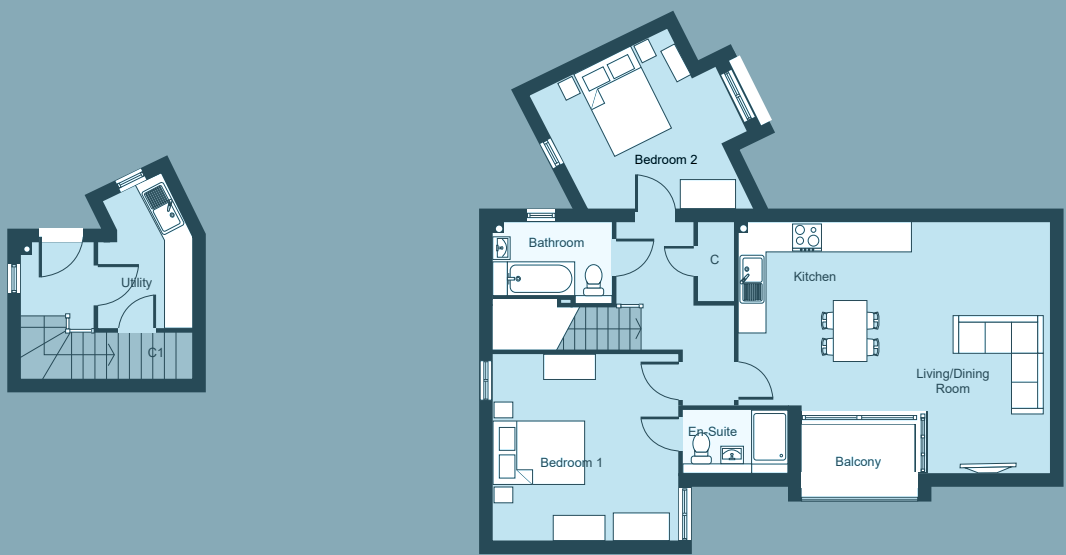
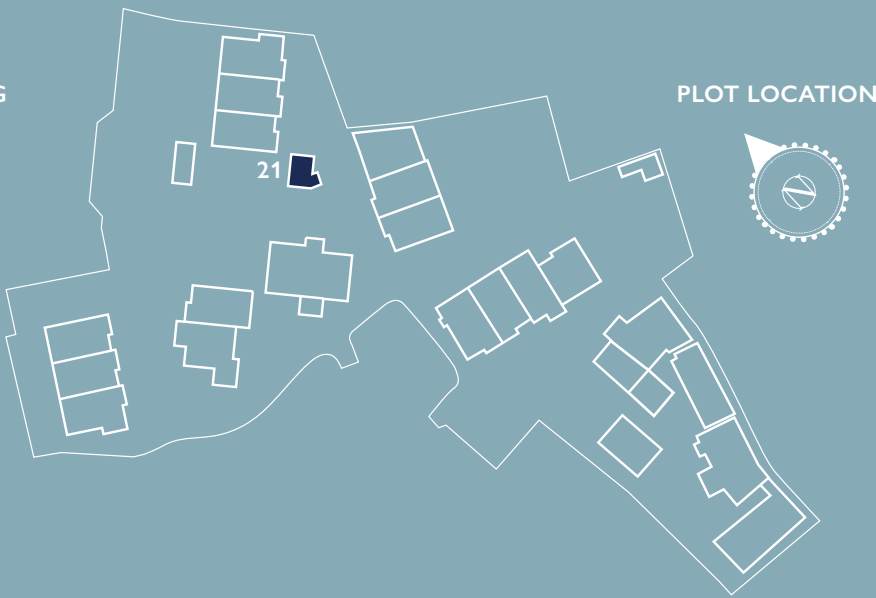


WWW.RODDYNEWHOMES.CO.UK

Floorplans

2 BEDROOM HOME WITH PARKING

TOTAL AREA: 95.9M² | 1032SQFT



GROUND FLOOR

FIRST FLOOR

Entrance	2.5m x 1.6m / 8'2" x 5'3"
Utility	2.4m x 2.5m / 7'10" x 8'2"

Kitchen/Dining/Living	5.5m x 6.9m / 18'1" x 22'8"
Bedroom 1	4.1m x 3.9m / 13'5" x 12'10"
Bedroom 2	5m x 3.8m / 16'5" x 12'6"
En-suite	1.4m x 2.4m / 6'11" x 5'3"
Bathroom	1.7m x 2.4m / 4'7" x 7'10"



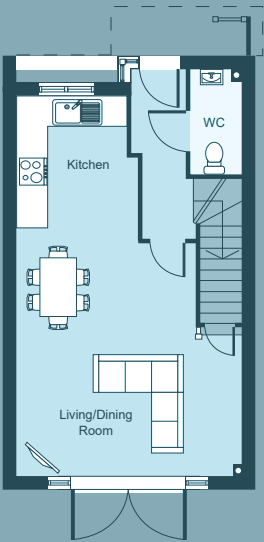
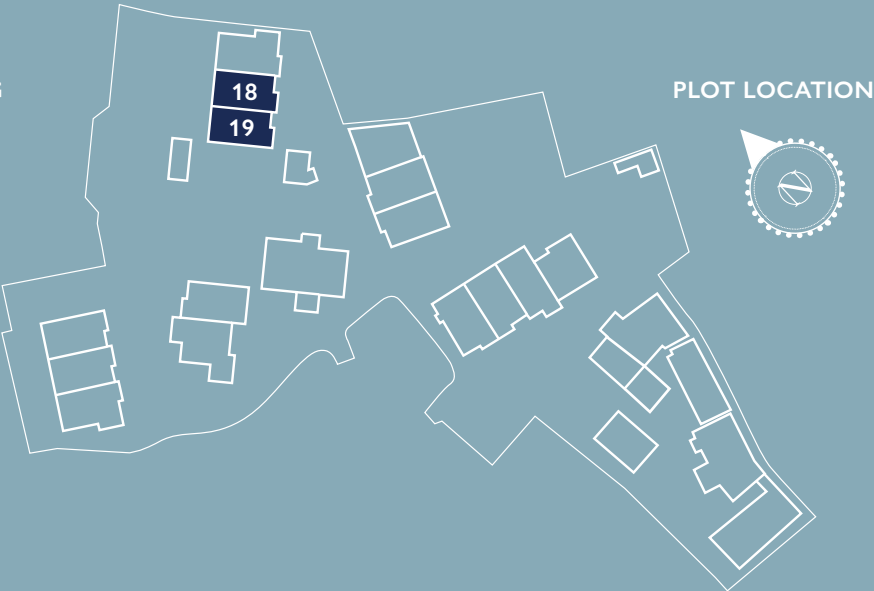
3 Bedroom home with parking

TOTAL AREA: 101.7M² | 1094SQFT

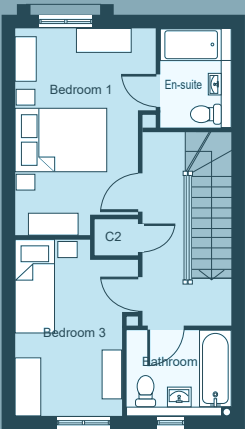


Floorplans

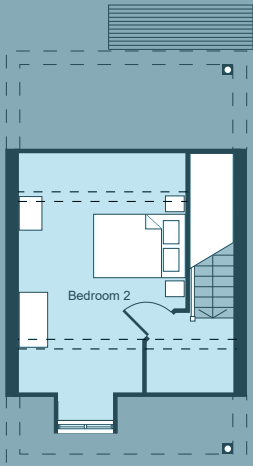
3 BEDROOM HOME WITH PARKING
TOTAL AREA: 101.7M² | 1094SQFT



GROUND FLOOR



FIRST FLOOR



SECOND FLOOR

Kitchen/Living/Dining	8.7m x 4.8m / 28'7" x 15'9"
WC	2.5m x 1m / 8'2" x 3'3"

Bedroom 1	4.7m x 3.1m / 15'5" x 10'2"
Bedroom 3	3.8m x 2.5m / 12'6" x 8'2"
En-suite	2.2m x .6m / 7'3" x 5'3"
Bathroom	2.1m x 2.2m / 6'11" x 7'3"

Bedroom 2	4.5m x 3.7m / 14'9" x 12'2"
-----------	-----------------------------



Plot 17

3 Bedroom home with parking

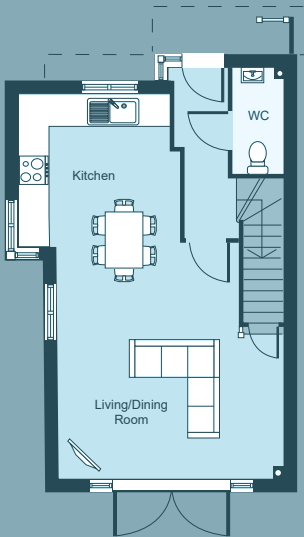
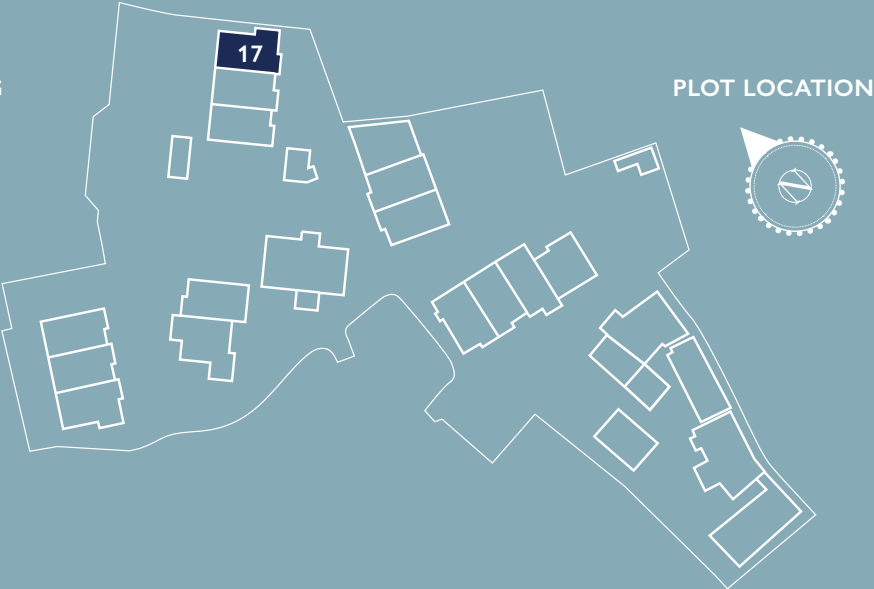
TOTAL AREA: 104.4M² | 1123SQFT



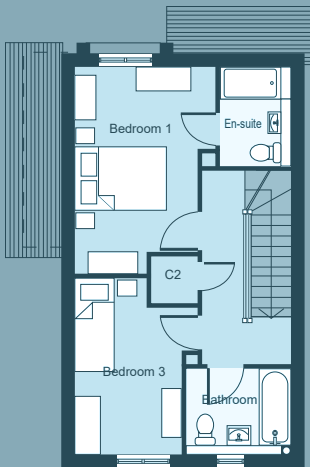
WWW.RODDYNEWHOMES.CO.UK

Floorplans

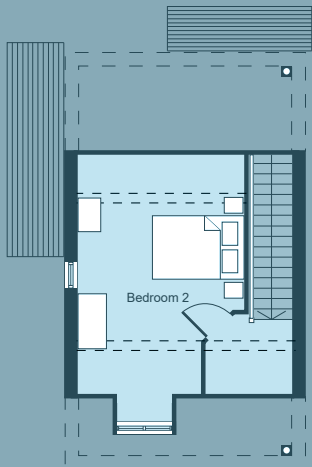
3 BEDROOM HOME WITH PARKING
TOTAL AREA: 104.4M² | 1123SQFT



GROUND FLOOR



FIRST FLOOR



SECOND FLOOR

Kitchen/Living/Dining	8.7m x 4.8m / 28'7" x 15'9"
WC	2.5m x 1m / 8'2" x 3'3"

Bedroom 1	4.7m x 3.1m / 15'5" x 10'2"
Bedroom 3	3.8m x 2.5m / 12'6" x 8'2"
En-suite	2.2m x .6m / 7'3" x 5'3"
Bathroom	2.1m x 2.2m / 6'11" x 7'3"

Bedroom 2	4.5m x 3.7m / 14'9" x 12'2"
-----------	-----------------------------



Plot 16

3 Bedroom home with parking

TOTAL AREA: 104.8M² | 1128SQFT

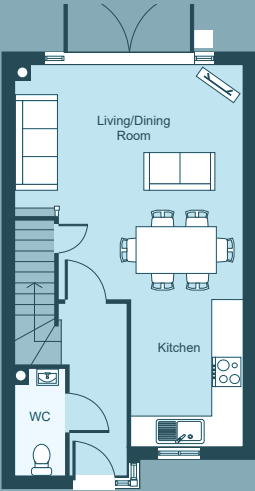


WWW.RODDYNEWHOMES.CO.UK

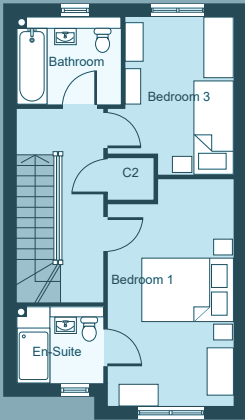
Floorplans

3 BEDROOM HOME WITH PARKING

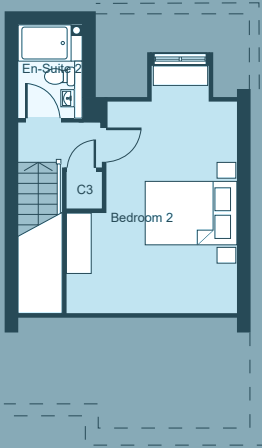
TOTAL AREA: 104.8M² | 1128SQFT



GROUND FLOOR



FIRST FLOOR



SECOND FLOOR

Kitchen/Living/Dining	11.1m x 4.9m / 36'5" x 16'1"
WC	2.2m x 1m / 7'3" x 3'3"

Bedroom 1	4.8m x 2.8m / 15'9" x 9'2"
Bedroom 3	3.9m x 2.4m / 12'10" x 7'10"
En-suite	1.6m x 2m / 5'3" x 6'7"
Bathroom	2m x 2.4m / 6'7" x 7'10"

Bedroom 2	5.6m x 3.7m / 18'4" x 12'2"
En-suite	2.2m x 1.6m / 7'3" x 5'3"



Plot 15

3 Bedroom home with parking

TOTAL AREA: 104.8M² | 1128SQFT

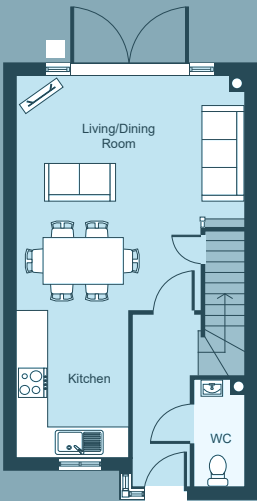


WWW.RODDYNEWHOMES.CO.UK

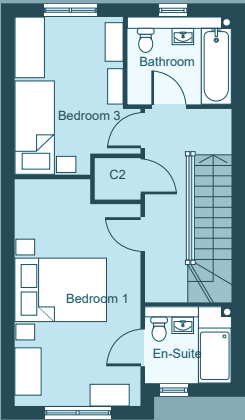
Floorplans

3 BEDROOM HOME WITH PARKING

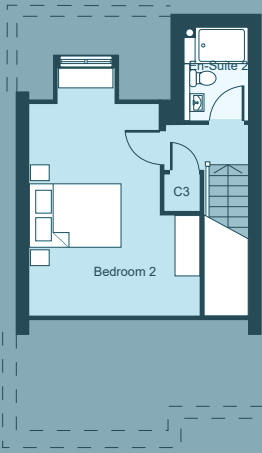
TOTAL AREA: 104.8M² | 1128SQFT



GROUND FLOOR



FIRST FLOOR



SECOND FLOOR

Kitchen/Living/Dining	11.1m x 4.9m / 36'5" x 16'1"
WC	2.2m x 1m / 7'3" x 3'3"

Bedroom 1	4.8m x 2.8m / 15'9" x 9'2"
Bedroom 3	3.9m x 2.4m / 12'10 x 7'10"
En-suite	1.6m x 2m / 5'3" x 6'7"
Bathroom	2m x 2.4m / 6'7" x 7'10"

Bedroom 2	5.6m x 3.7m / 18'4" x 12'2"
En-suite	2.2m x 1.6m / 7'3" x 5'3"



Plot 14

3 Bedroom home with parking

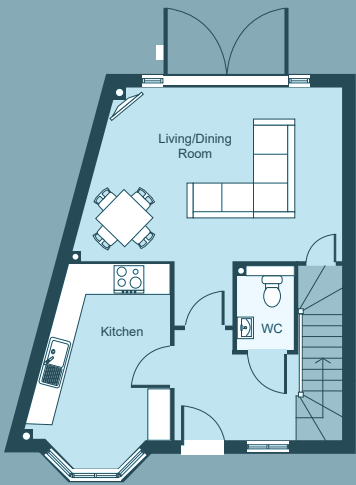
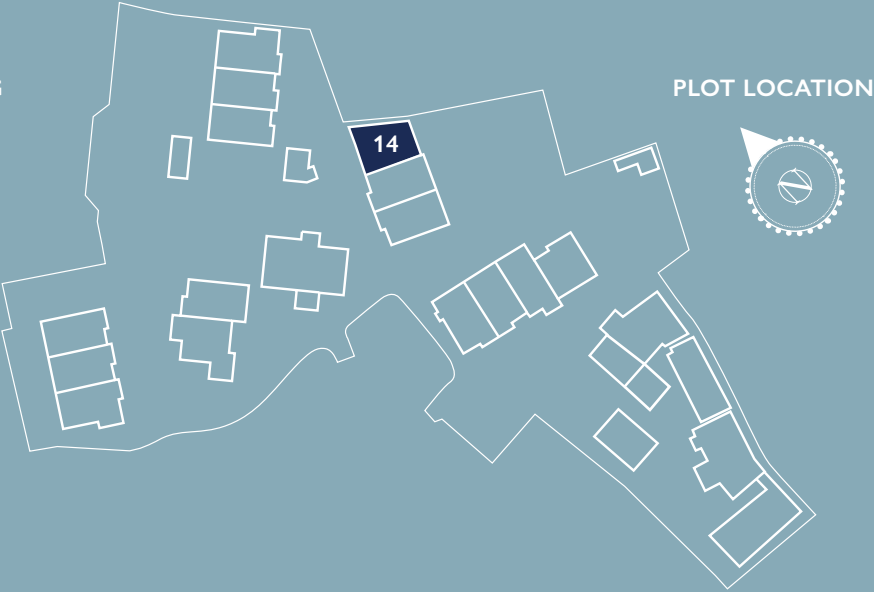
TOTAL AREA: 102.1M² | 1098SQFT



WWW.RODDYNEWHOMES.CO.UK

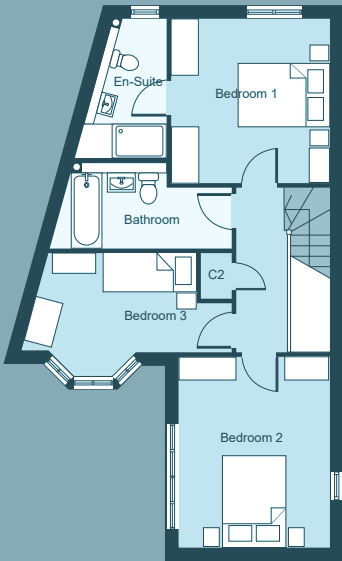
Floorplans

3 BEDROOM HOME WITH PARKING
TOTAL AREA: 102.1M² | 1098SQFT



GROUND FLOOR

Dining/Living	3.9m x 5.8m / 12'10" x 19'0"
Kitchen	3.6m x 2.1m / 11'10" x 6'11"
WC	1.7m x 1.3m / 5'7" x 4'3"



FIRST FLOOR

Bedroom 1	4.1m x 3.3m / 13'5" x 10'10"
Bedroom 2	4m x 3.5m / 13'1" x 11'6"
Bedroom 3	2.3m x 3.4m / 7'7" x 11'2"
En-suite	3.2m x 2.2m / 10'6" x 7'3"
Bathroom	2m x 3.4m / 6'7" x 11'2"

Plot 12a

3 Bedroom home with parking

TOTAL AREA: 104.8M² | 1128SQFT

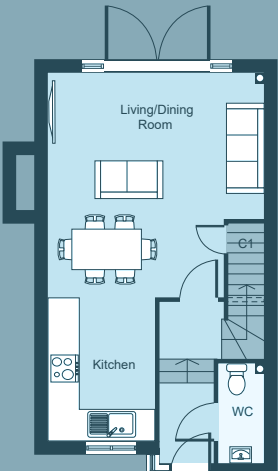
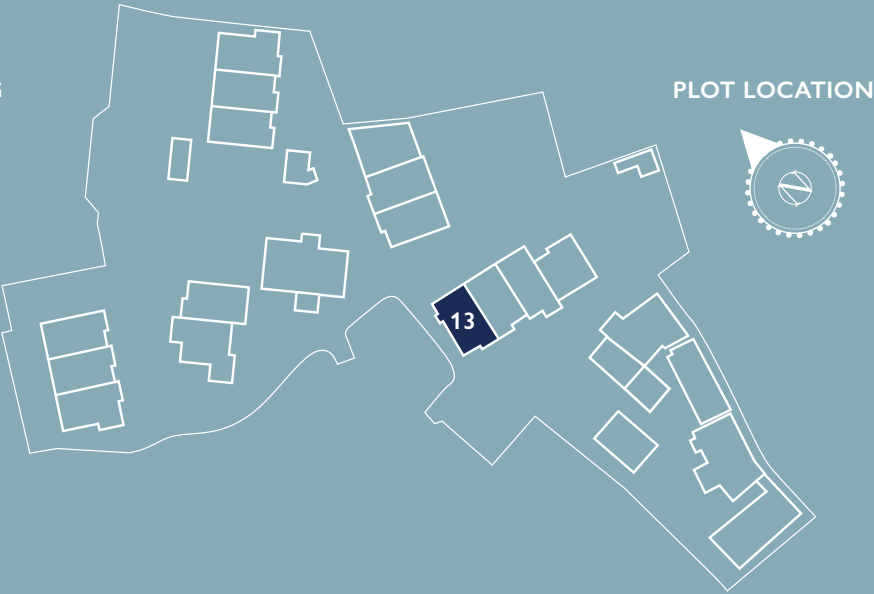


WWW.RODDYNEWHOMES.CO.UK

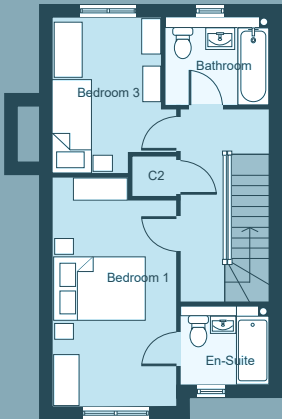
Floorplans

3 BEDROOM HOME WITH PARKING

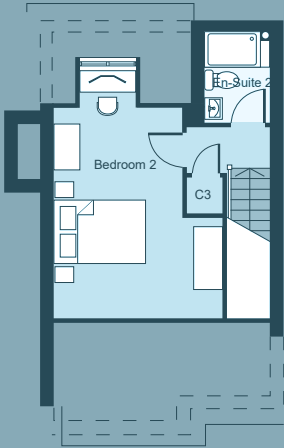
TOTAL AREA: 104.8M² | 1128SQFT



GROUND FLOOR



FIRST FLOOR



SECOND FLOOR

Kitchen/ Living/Dining	8.7m x 4.9m / 28'7" x 16'1"
WC	2.2m x 1m / 7'3" x 3'3"

Bedroom 1	4.8m x 2.8m / 15'9" x 9'2"
Bedroom 3	3.8m x 2.5m / 12'6" x 8'2"
En-suite	1.6m x 2m / 5'3" x 6'7"
Bathroom	2m x 2.4m / 6'7" x 7'10"

Bedroom 2	5.6m x 3.8m / 18'4" x 12'6"
En-suite	2.1m x 1.6m / 6'11" x 5'3"



Plot 12

3 Bedroom home with parking

TOTAL AREA: 104.8M² | 1128SQFT

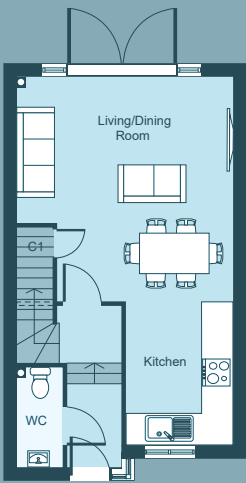
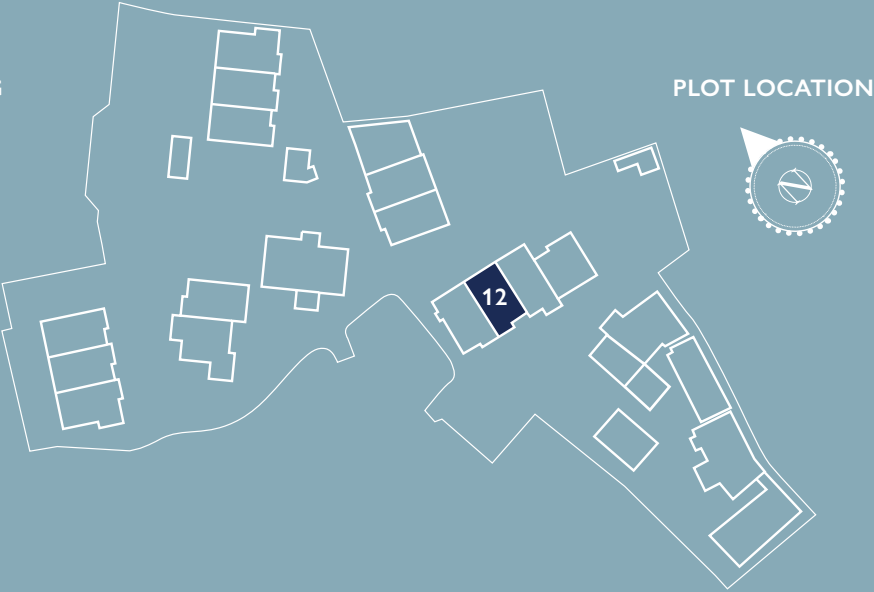


WWW.RODDYNEWHOMES.CO.UK

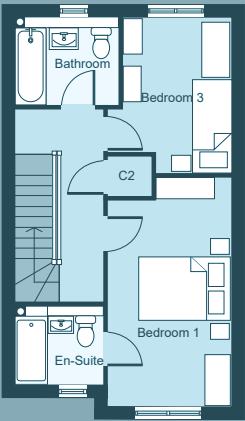
Floorplans

3 BEDROOM HOME WITH PARKING

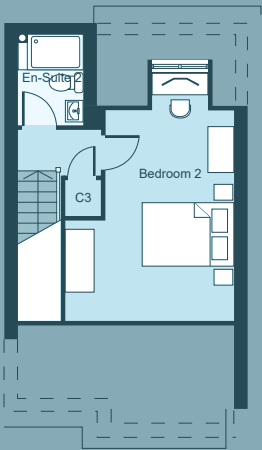
TOTAL AREA: 104.8M² | 1128SQFT



GROUND FLOOR



FIRST FLOOR



SECOND FLOOR

Kitchen/ Living/Dining	8.7m x 4.9m / 28'7" x 16'1"
WC	2.2m x 1m / 7'3" x 3'3"

Bedroom 1	4.8m x 2.8m / 15'9" x 9'2"
Bedroom 3	3.8m x 2.5m / 12'6" x 8'2"
En-suite	1.6m x 2m / 5'3" x 6'7"
Bathroom	2m x 2.4m / 6'7" x 7'10"

Bedroom 2	5.6m x 3.8m / 18'4" x 12'6"
En-suite	2.1m x 1.6m / 6'11" x 5'3"



Plot 11

3 Bedroom home with parking

TOTAL AREA: 106.8M² | 1149SQFT



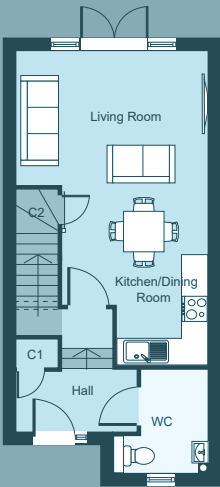
WWW.RODDYNEWHOMES.CO.UK

Floorplans

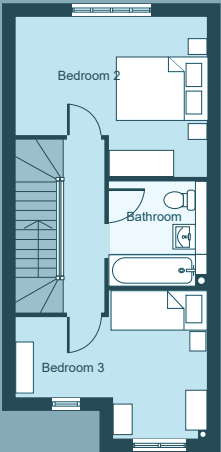
3 BEDROOM HOME WITH PARKING

TOTAL AREA: 106.8M² | 1149SQFT

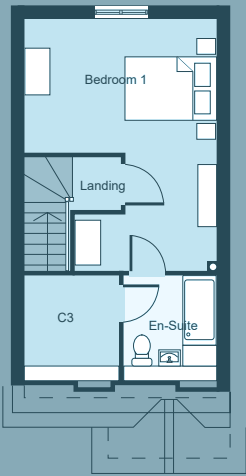
PLOT LOCATION



GROUND FLOOR



FIRST FLOOR



SECOND FLOOR

Kitchen/ Living/Dining	7.1m x 4.1m / 23'4" x 13'5"
WC	2.1m x 1.6m / 6'11" x 5'3"

Bedroom 1	3.7m x 4.2m / 12'2" x 13'9"
Bedroom 3	3.3m x 4.2m / 10'10 x 13'9"
Bathroom	2.4m x 2m / 7'10" x 6'7"

Bedroom 2	5.4m x 4.2m / 17'9" x 13'9"
En-suite	2m x 2.4m / 6'7" x 7'10"



Plot 10

3 Bedroom home with parking

TOTAL AREA: 110.2M² | 1186SQFT

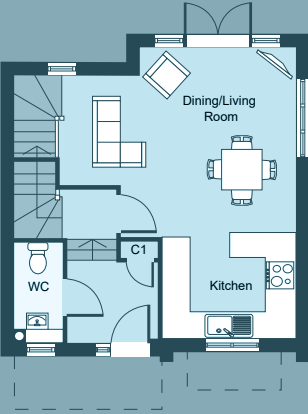
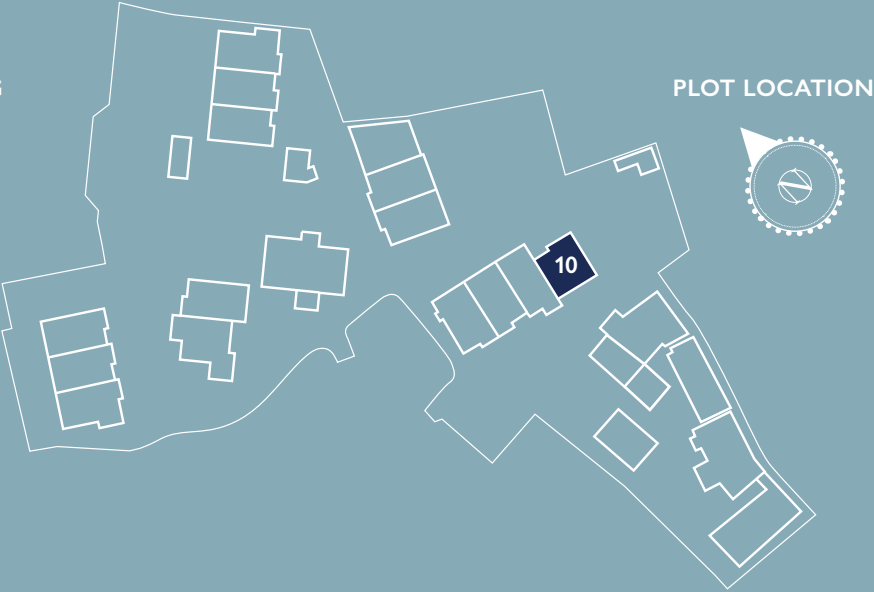


WWW.RODDYNEWHOMES.CO.UK

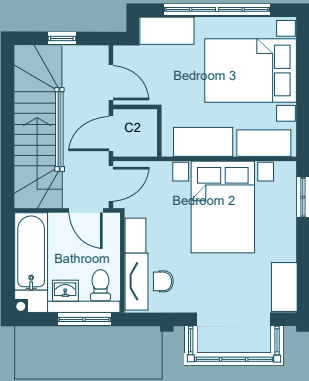
Floorplans

3 BEDROOM HOME WITH PARKING

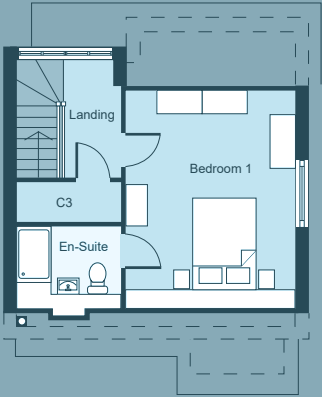
TOTAL AREA: 110.2M² | 1186SQFT



GROUND FLOOR



FIRST FLOOR



SECOND FLOOR

Kitchen/ Living/Dining	7.3m x 5m / 23'11" x 16'5"
WC	2.2m x 1m / 7'3" x 3'3"

Bedroom 2	3.4m x 3.6m / 11'2" x 11'10"
Bedroom 3	3.1m x 3.4m / 10'2" x 11'2"
Bathroom	2.1m x 2.4m / 6'11" x 7'10"

Bedroom 1	5.2m x 3.9m / 17'1" x 12'10"
En-suite	1.6m x 2.4m / 5'3" x 7'10"



Plot 9

1 Bedroom home with parking

TOTAL AREA: 60.2M² | 647SQFT

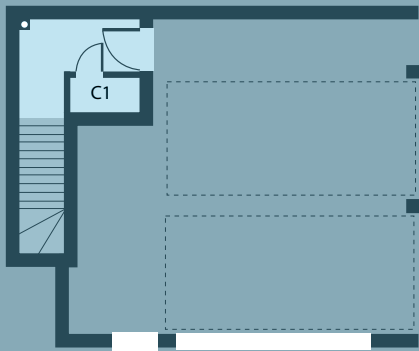


WWW.RODDYNEWHOMES.CO.UK

Floorplans

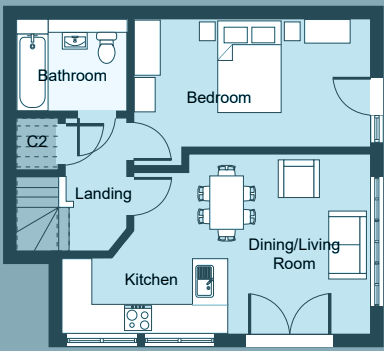
1 BEDROOM HOME WITH PARKING
TOTAL AREA: 60.2M² | 647SQFT

PLOT LOCATION



GROUND FLOOR

Car Parking Space	1.3m x 1.5m / 4'3" x 4'11"
Entrance	2.8m x 3.2m / 9'2" x 10'6"



FIRST FLOOR

Kitchen/Dining/Living	3.9m x 6.8m / 12'10" x 22'4"
Bedroom	2.9m x 5.3m / 9'6" x 17'5"
Bathroom	2m x 2.8m / 6'7" x 9'2"



Plot 8

2 Bedroom home with parking

TOTAL AREA: 116.7M² | 1256SQFT

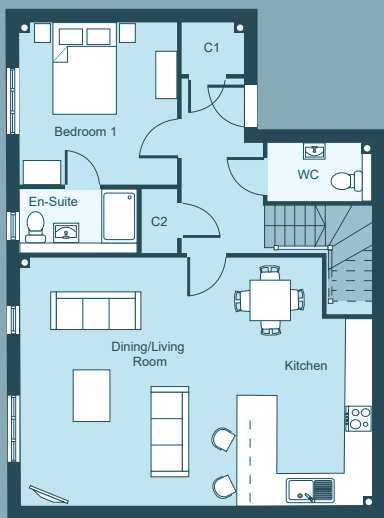


WWW.RODDYNEWHOMES.CO.UK

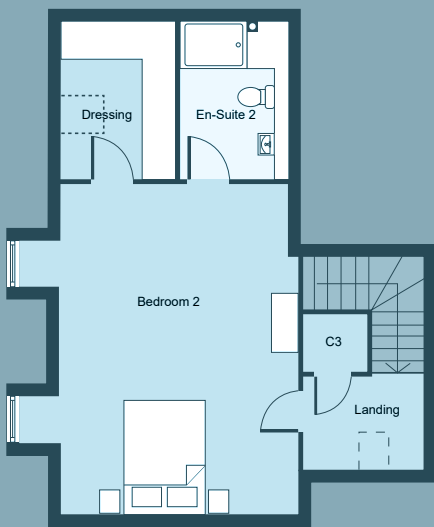
Floorplans

2 BEDROOM HOME WITH PARKING
TOTAL AREA: 116.7M² | 1256SQFT

PLOT LOCATION



GROUND FLOOR



FIRST FLOOR

Kitchen/Dining/Living	5.2m x 6.6m / 17'1" x 21'8"
Bedroom 1	3.6m x 3.4m / 11'10" x 11'2"
En-Suite	1.5m x 2.6m / 4'11" x 8'6"

Bedroom 2	6m x 4.5m / 19'8" x 14'9"
Dressing	2.7m x 2.2m / 8'10" x 7'3"



Plot 7

2 Bedroom home with parking

TOTAL AREA: 87.1M² | 937SQFT

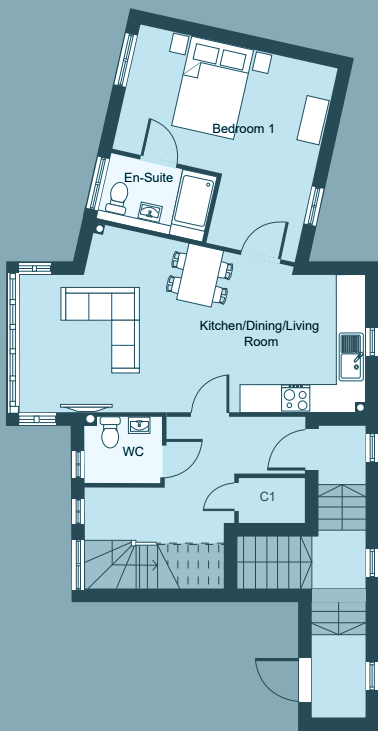


WWW.RODDYNEWHOMES.CO.UK

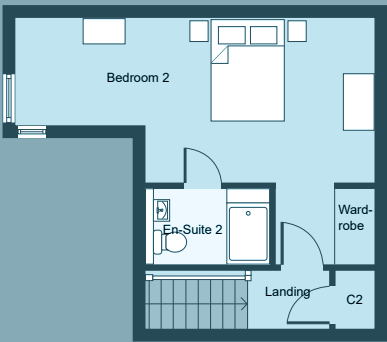
Floorplans

2 BEDROOM HOME WITH PARKING
TOTAL AREA: 87.1M² | 937SQFT

PLOT LOCATION



FIRST FLOOR



SECOND FLOOR

Kitchen/Dining/Living	5.2m x 6.6m / 17'1" x 21'8"
Bedroom 1	3.6m x 3.4m / 11'10" x 11'2"
En-Suite	1.5m x 2.6m / 4'11" x 8'6"

Bedroom 2	6m x 4.5m / 19'8" x 14'9"
Dressing	2.7m x 2.2m / 8'10" x 7'3"



Plot 6

2 Bedroom home with parking

TOTAL AREA: 67.7M² | 728SQFT

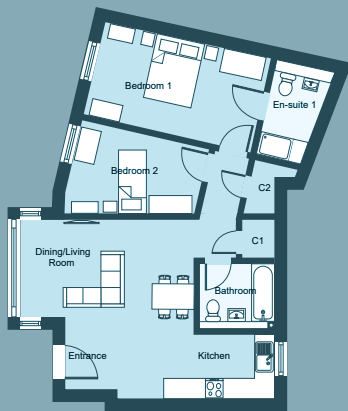


WWW.RODDYNEWHOMES.CO.UK

Floorplans

2 BEDROOM HOME WITH PARKING
TOTAL AREA: 67.7M² | 728SQFT

PLOT LOCATION



GROUND FLOOR

Dining/Living	5.2m x 2.8m / 17'1" x 9'2"
Kitchen	6.1m x 2m / 20'0" x 6'7"
Bedroom 1	2.9m x 5.1m / 9'6" x 16'9"
Bedroom 2	2.9m x 3.9m / 9'6" x 12'10"
En-Suite	3.1m x 1.8m / 10'2" x 5'11"
Bathroom	2.3m x 1.9m / 7'7" x 6'3"



Plot 5

2 Bedroom home with parking

2 BEDROOM HOME WITH PARKING

TOTAL AREA: 97.9M² | 1053SQFT

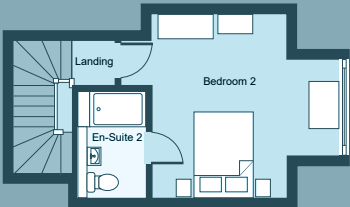
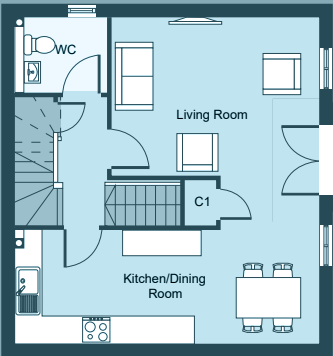
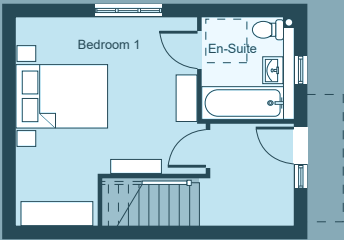


WWW.RODDYNEWHOMES.CO.UK

Floorplans

2 BEDROOM HOME WITH PARKING
TOTAL AREA: 97.9M² | 1053SQFT

PLOT LOCATION



GROUND FLOOR

FIRST FLOOR

SECOND FLOOR

Bedroom 1	4.9m x 4.6m / 16'1" x 15'1"	Kitchen/Living	6.8m x 2.5m / 22'4" x 8'2"	Bedroom 2	4.1m x 3m / 13'5" x 9'10"
Bedroom 3	1.9m x 2.3m / 6'3" x 7'7"	Living Room	4.6m x 3.6m / 15'1" x 11'10"	En-suite	2.4m x 1.5m / 7'10" x 4'11"
		WC	2.2m x 1.5m / 7'3" x 4'11"		



Plot 3 - Ground Floor

2 Bedroom home with parking

TOTAL AREA: 106.8M² | 1149SQFT



WWW.RODDYNEWHOMES.CO.UK

Plot 3 - Ground Floor

Floorplans

2 BEDROOM HOME WITH PARKING
TOTAL AREA: 106.8M² | 1149SQFT

PLOT LOCATION



GROUND FLOOR

Kitchen/ Dining/Living	3.8m x 7.5m / 12'6" x 24'7"
Bedroom 1	3.1m x 4.1m / 10'2" x 13'5"
Bedroom 2	2.4m x 4.3m / 7'10" x 14'1"
Bathroom	2m x 2.2m / 6'7" x 7'3"



Plot 2 - First Floor

2 Bedroom home with parking

TOTAL AREA: 106.8M² | 1149SQFT



WWW.RODDYNEWHOMES.CO.UK

Floorplans

2 BEDROOM HOME WITH PARKING
TOTAL AREA: 106.8M² | 1149SQFT

PLOT LOCATION



FIRST FLOOR

Kitchen/ Dining/Living	3.8m x 7.5m / 12'6" x 24'7"
Bedroom 1	3.1m x 4.1m / 10'2" x 13'5"
Bedroom 2	2.4m x 4.3m / 7'10" x 14'1"
Bathroom	2m x 2.2m / 6'7" x 7'3"



Plot 1

2 Bedroom home with parking

TOTAL AREA: 92.4M² | 994SQFT

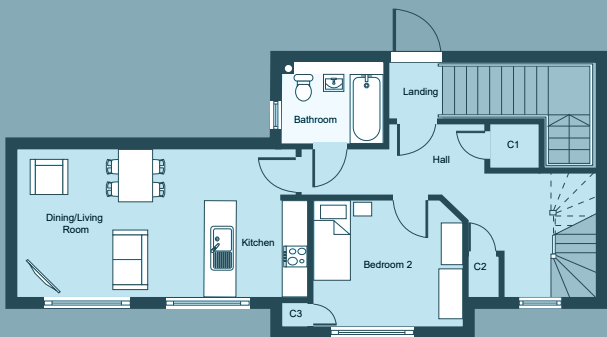


WWW.RODDYNEWHOMES.CO.UK

Floorplans

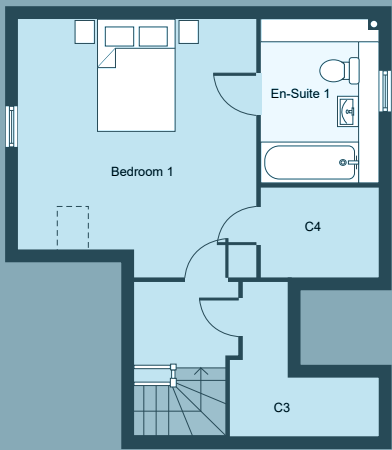
2 BEDROOM HOME WITH PARKING
TOTAL AREA: 92.4M² | 994SQFT

PLOT LOCATION



FIRST FLOOR

Kitchen/Dining/Living	3.5m x 7m / 11'6" x 23'0"
Bedroom 2	6.2m x 4.3m / 20'4" x 14'1"
Bathroom	2.1m x 2.4m / 6'11" x 7'10"



SECOND FLOOR

Bedroom 1	4.9m x 4.2m / 16'1" x 13'9"
En-suite	2.9m x 2m / 9'6" x 6'7"

