



7 Douglas Road, Addlestone, KT15 2DZ

INCORPORATING  
**Waterford's**  
Residential Sales & Lettings

£280,000

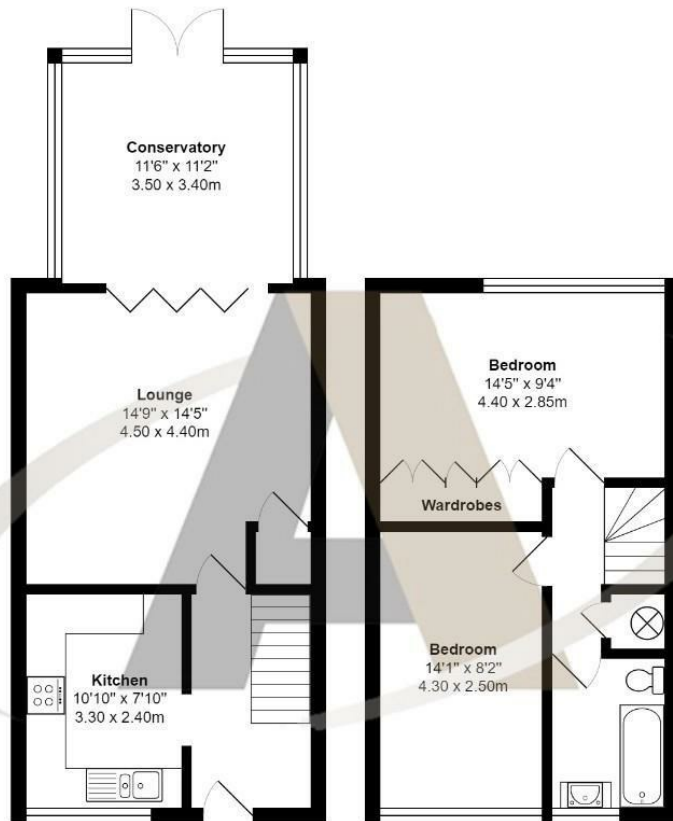


## 7 Douglas Road, Addlestone, KT15 2DZ

Aspen Estate Agents are delighted to introduce this lovely 2-bedroom, split-level maisonette to the market. Situated just a few moments' walk from the recently developed shops, cinema, and restaurants in the Addlestone One complex and Addlestone Station, with many local schools and transport links, this property would suit a professional couple or small family. The accommodation comprises 2 double bedrooms, the master has built-in wardrobes and overlooks Victory Park, a recently modernised family bathroom, a large lounge with a conservatory perfect as a dining area, and a separate kitchen with ample storage, worktop space, and room for appliances. Outside, this property has its own garden, perfect for entertaining, and a garage in the block. This property is offered to the market with a long lease and no onward chain. This property is likely to attract a lot of attention, and prompt viewings are encouraged and can be booked by calling Aspen Estate Agents.



## Floor Plan



Douglas Road, Addlestone

Total Area: 890 ft<sup>2</sup> ... 82.7 m<sup>2</sup>  
All measurements are approximate and for display purposes only



## Features

- 2 Bedroom, Split Level Maisonette
- Conservatory
- Close to Addlestone Shops, Cinema, Restaurants and Station
- Overlooking Victory Park
- Long Lease and No Onward Chain
- Large Lounge
- Private Garden
- Convenient for Schools and Transport
- Garage in the block

## Aspen Estate Agents incorporating Waterfords

32 High Street

Chobham

Surrey

GU24 8AA

01276 858 589

chobham@waterfords.co.uk



Tenure - Leasehold - Share of Freehold Council Tax Band - C



