



INCORPORATING
Waterford's
Residential Sales & Lettings

Melvin Halebourne Lane, Chobham, GU24 8SL

£775,000

Melvin Halebourne Lane, Chobham, GU24 8SL

A detached chalet property offering versatile family accommodation with four double bedrooms or further reception rooms. The 1st floor offering two large double bedrooms and the fully fitted shower room, the main bedroom has views overlooking the rear garden. To the rear of the property is the kitchen breakfast room with direct access to the garden, a separate dining area with stairs to the 1st floor. The main living room has direct access to the large extensive landscaped garden with doors to the patio.

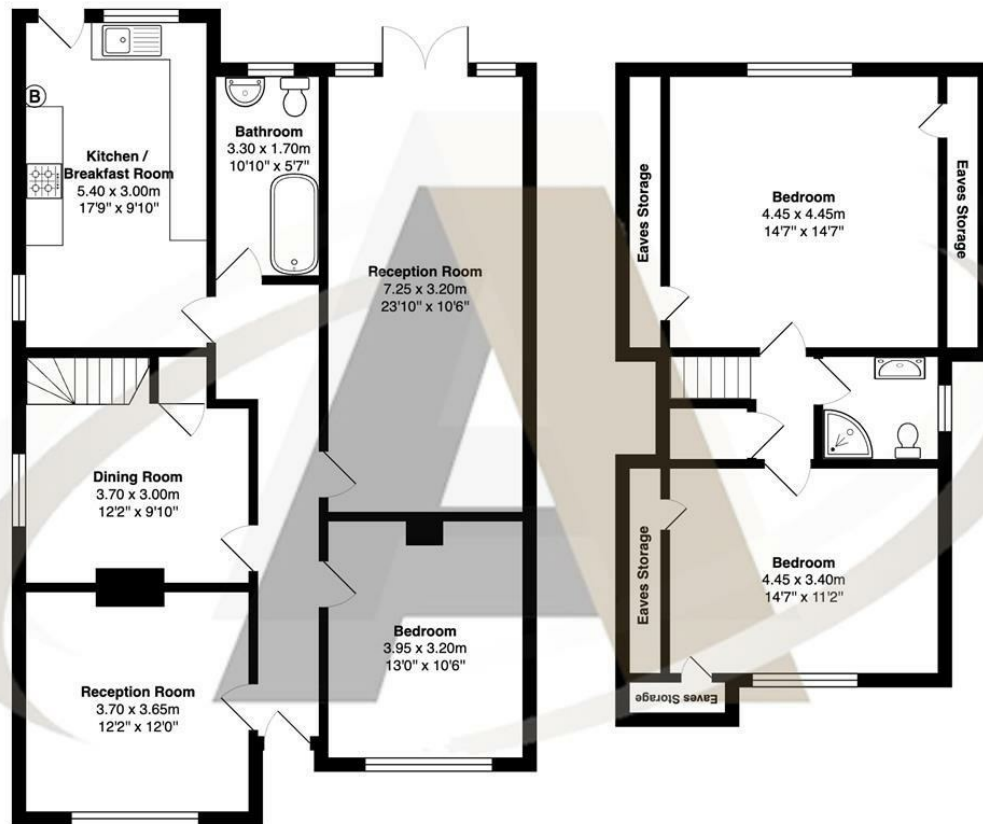
The rear garden offers a large secluded space with two patio areas giving entertainment areas, mainly laid to lawn, mature shrubs and hedging giving a private tranquil garden with side access to the front. There is off-street parking to the front for two cars and ample space to extend this for additional parking if desired.

The property is set on the outskirts of Chobham Village in a popular location, close to Gordon Boys School, offering semi-rural surroundings and within easy reach of all the local amenities and transport links.

Solar Panels are fitted to part of the roof and have produced an Annual Income and Free usage of Electric for the Current Owners (More Information from the Selling Agent)



Floor Plan



Melvin, Halebourne Lane, Chobham

Total Area: 152.7 m² ... 1644 ft²
All measurements are approximate and for display purposes only



Features

- Detached Chalet Property
- Two Reception Rooms
- Off Street Parking for 2 Cars
- Semi-rural Location
- Flexible 2/4 Beds or 2/4 Reception Rooms
- Four Double Bedrooms
- 1st Flr. Shower Room & Further Bathroom
- Large Mature Rear Garden
- Scope to Extend STPP
- Gordon Boys School Close By

Aspen Estate Agents incorporating Waterfords

32 High Street

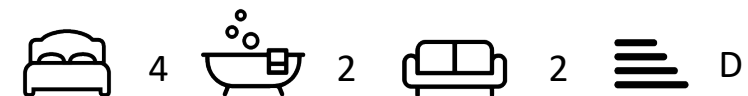
Chobham

Surrey

GU24 8AA

01276 858 589

chobham@waterfords.co.uk



Tenure - Freehold Council Tax Band - E

