



72 Beverley Court Cedar Drive, Ascot, SL5 0UB

INCORPORATING
Waterford's
Residential Sales & Lettings

£275,000

72 Beverley Court Cedar Drive, Ascot, SL5 0UB

Stylish Top Floor Apartment in Sought-After Beverley Court, Cedar Drive

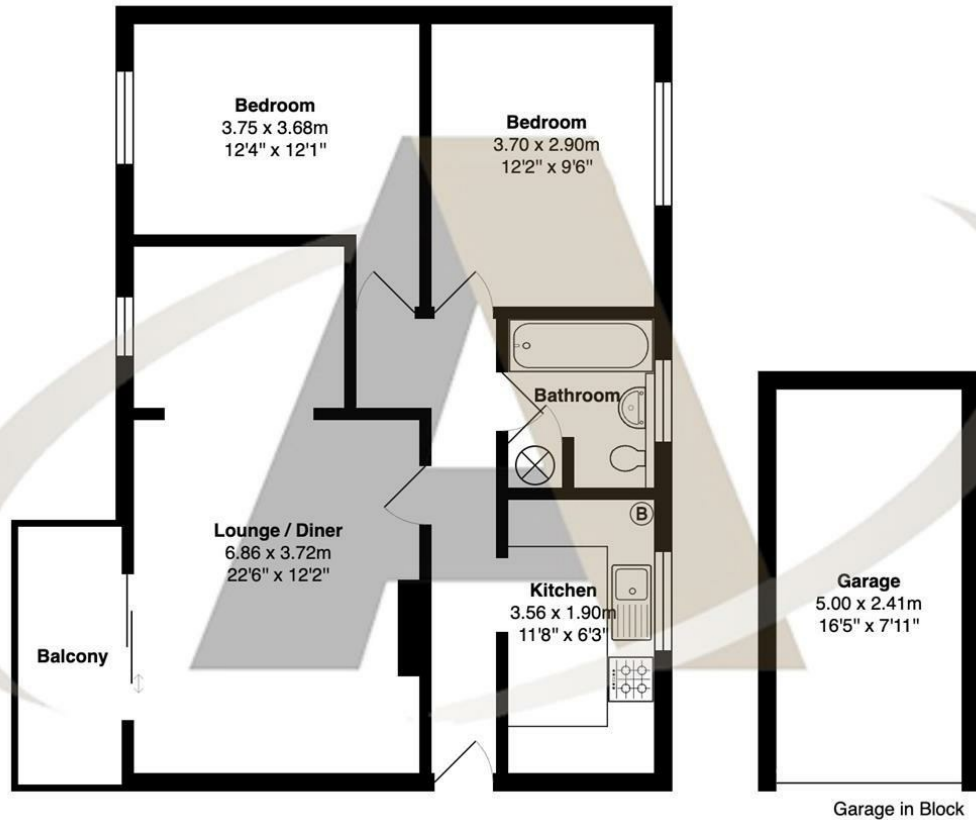
Located in the ever-popular Beverley Court on Cedar Drive, this well-presented two-bedroom top floor apartment offers an excellent opportunity for first-time buyers and buy-to-let investors alike. Ideally positioned just a short walk from Sunningdale Station and local shops, this property combines convenience with comfortable living.

The accommodation is bright and spacious throughout, featuring two generously sized double bedrooms, a large lounge with a dedicated dining area—perfect for entertaining—and a separate, well-equipped kitchen. The modern bathroom adds to the apartment's appeal, offering both style and practicality.

Offered for sale with no onward chain, in good condition with a garage in the block. This property is already drawing significant interest and must be seen to be fully appreciated.



Floor Plan



Beverley Court, Cedar Drive, Sunningdale

Total Area: 83.3 m² ... 897 ft²

All measurements are approximate and for display purposes only



Features

- Located in the sought-after Beverley Court on Cedar Drive
- Two spacious double bedrooms
- Separate, well-equipped kitchen
- Close to Sunningdale Station and local shops
- Garage in block
- Top floor position offering added privacy and quiet
- Bright and airy lounge with dedicated dining area
- Modern and stylish bathroom
- Ideal for first-time buyers or buy-to-let investors

Aspen Estate Agents incorporating Waterfords

32 High Street

Chobham

Surrey

GU24 8AA

01276 858 589

chobham@waterfords.co.uk



Tenure - Leasehold Council Tax Band - D



INCORPORATING
Waterfords
Residential Sales & Lettings