



Pirbright Road | Normandy | Guildford | GU3 2AG

Offers In Excess Of £475,000

Freehold





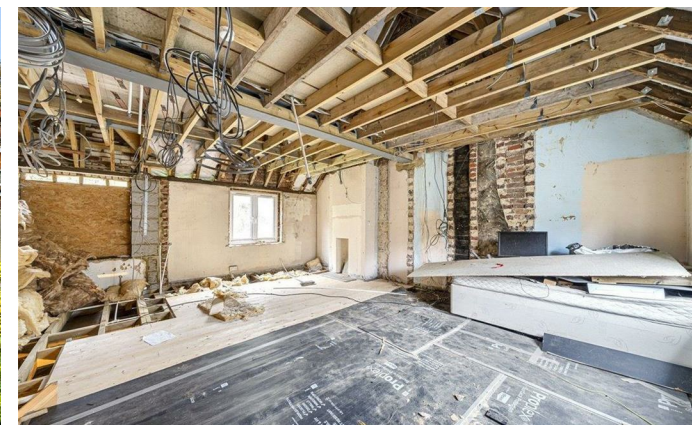
Pirbright Road | Normandy  
Guildford | GU3 2AG  
Offers In Excess Of £475,000

An interesting opportunity to complete a partly refurbished cottage with a generous plot, outbuilding and plentiful parking.

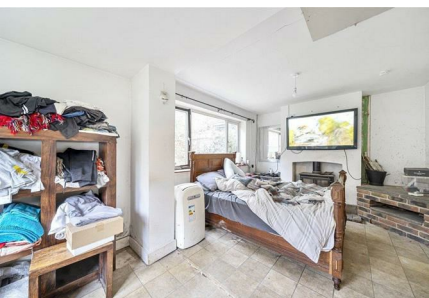
- Semi detached cottage
- Sizeable plot
- Two reception rooms
- Substantial parking
- Two to three bedrooms
- Modern kitchen
- Cottage/outbuilding
- Guildford Borough Council band D

## DESCRIPTION

Set in a semi rural location close to woodland is this rarely available generous size older style semi detached home that has been partially modernised by the current owners and now presents an opportunity to complete and potentially enlarge subject to planning







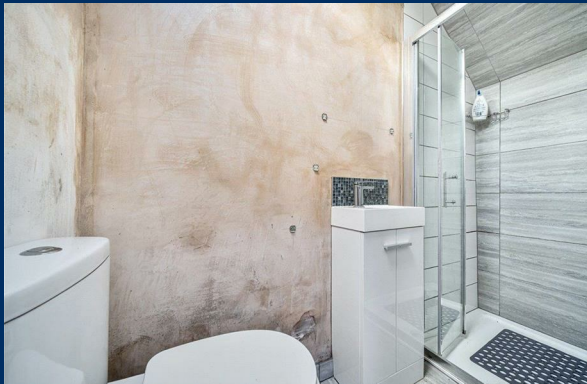
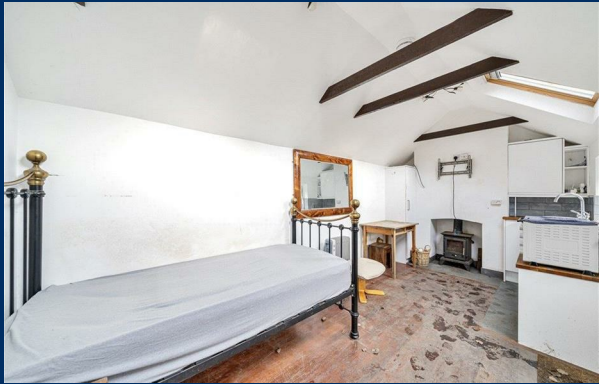
permission.

The home offers a substantial plot with parking off road for several vehicles. Furthermore there is a small detached single storey cottage to the rear of the garden that could be used as an annex or as a source of income through its rental.

A private and fully enclosed generous size plot that is largely laid to lawn with driveway parking providing access to rear covered parking space.

Pirbright Road can be found on your right hand side shortly after the garage and then off the mini roundabout when leaving Pirbright village in the direction of Guildford. Alternatively from Ash Vale / Normandy direction Pirbright Road will be found off the Guildford Road.





## Pirbright Road, Normandy, Guildford, GU3

Approximate Area = 978 sq ft / 90.8 sq m

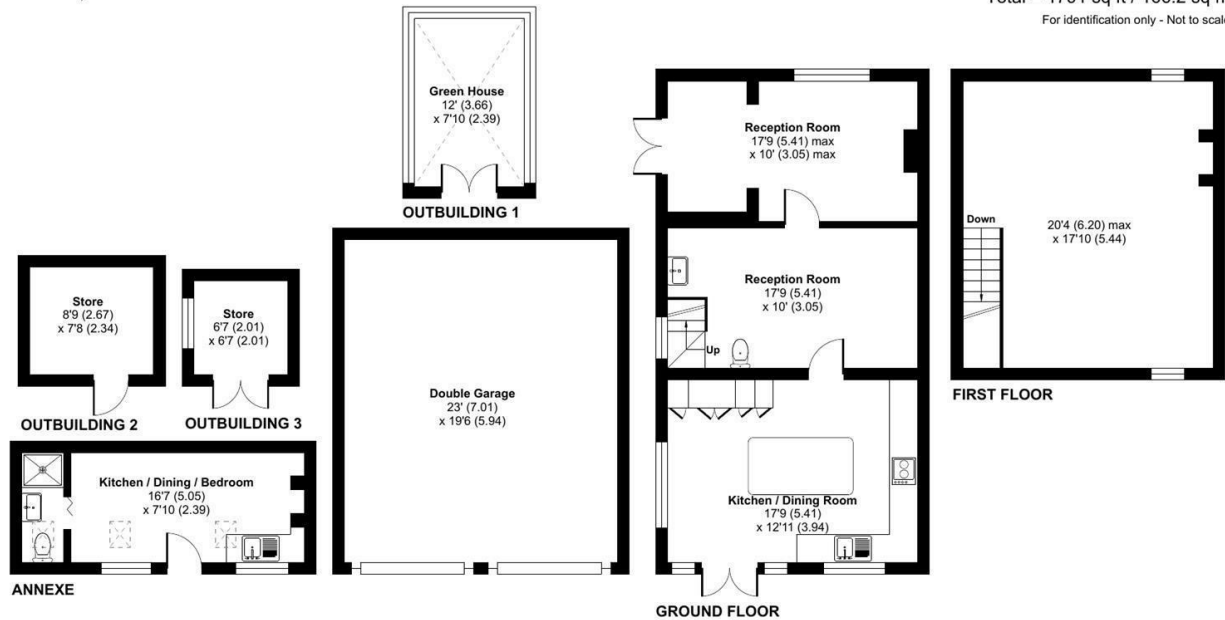
Annexe = 158 sq ft / 14.6 sq m

Garage = 449 sq ft / 41.7 sq m

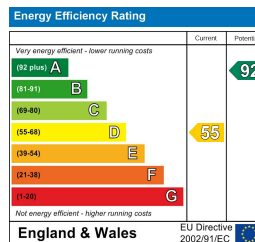
Outbuildings = 206 sq ft / 19.1 sq m

Total = 1791 sq ft / 166.2 sq m

For identification only - Not to scale



Floor plan produced in accordance with RICS Property Measurement Standards incorporating International Property Measurement Standards (IPMS2 Residential). © richcom 2023. Produced for Waterfords. REF: 1060863



32 High Street  
Chobham  
Surrey  
GU24 8AA  
01276 858 589

chobham@waterfords.co.uk