



07703 580 005  
[hello@peterreilly.co.uk](mailto:hello@peterreilly.co.uk)

**Peter  
Reilly**<sup>TM</sup>



## 7 Southminster Road, Offers Over £500,000

🛏 3 🚿 2 🛋 2

- Much-loved family house
- Quiet, tree-lined street
- Extended at the rear
- Large L-shaped family kitchen, living & dining room
- Bi-fold doors across the back
- Utility room
- Ground floor shower room
- 3 bedrooms
- Stylish bathroom
- Generous south facing garden

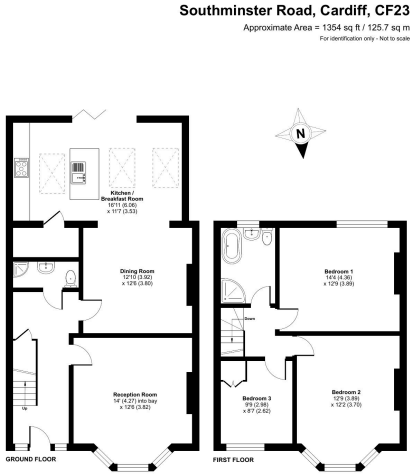


A much-loved, traditional, three bedroomed, bay fronted terraced house in a good position on a charming, quiet, tree-lined street in the much favoured 'Minster' roads of Penylan. Extended at the rear, the property features an attractive front living room, a large open plan family kitchen, living, dining room with bifold doors across the back of the house, a utility room and ground floor shower room plus three bedrooms and a bathroom. With a generous south facing garden, this is a property with much to offer.









Plan after production in accordance with RICS Property Measurement 2nd Edition.  
 International Property Measurement Standards (IPMS) Recommended. ©mshouse2023.  
 Produced by Peter Reilly - 0217 1200068

