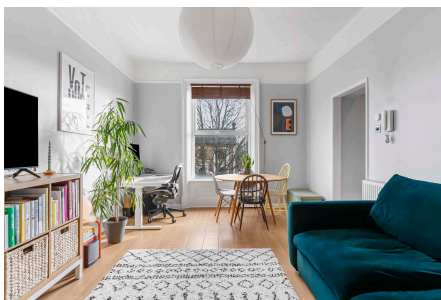


Anerley Park, Penge, SE20

Guide Price £325,000 - £350,000

1 1 1



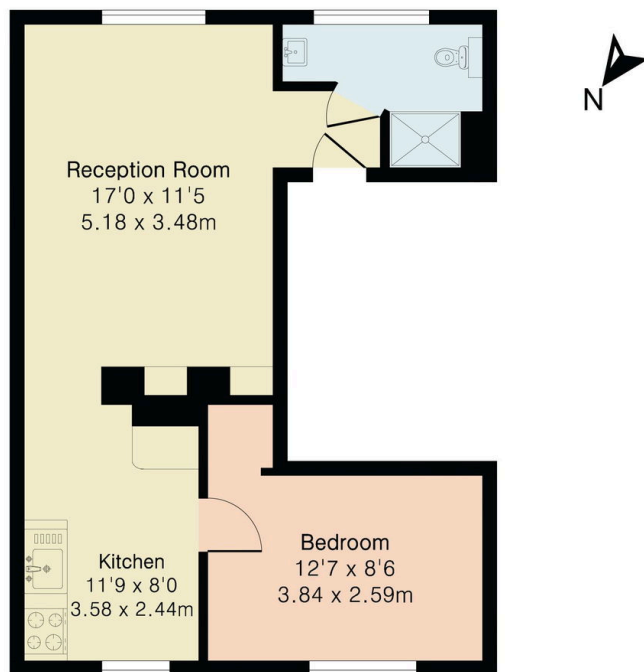
Please Quote Ref TH0310 For All Enquiries - GUIDE PRICE £325,000 - £350,000 - A beautifully presented one bedroom period first floor period conversion flat (494 Sq.Ft) with access to attractive communal gardens and share of the freehold, ideally located within easy reach of excellent transport links, local amenities, and beautiful Crystal Palace Park. The property offers spacious and bright accommodation with a classic blend of period features and modern updates - ideal for first time or investor buyer alike. Features include an inviting reception room, separate well equipped kitchen, modern shower room, gas central heating, double glazing, quality floor coverings.



Key Features

- Please Quote Ref TH0310 For All Enquiries
- Sought After Residential Location
- Separate Well Equipped Kitchen
- Communal Gardens
- Close to Penge West, Penge East and Crystal Palace Stations
- Beautiful One Bedroom First Floor Period Conversion (494 Sq.Ft)
- Light and Spacious Reception Room
- Modern Shower Room
- Share of Freehold
- Moments from Shops, Amenities and Beautiful Crystal Palace Park

Approximate Gross Internal Area 494 sq ft - 46 sq m



First Floor

