

Rushmore Hill, Orpington, BR6

Guide Price £325,000

2 1 1



Please Quote Ref TH0310 For All Enquiries - GUIDE PRICE £325K – Stunning two bedroom leasehold house (560 Sq.Ft) with off street parking, pleasantly situated in a quiet gated development at the bottom of Rushmore Hill, within easy reach of transport links and amenities. The property offers beautifully appointed, bright and spacious accommodation arranged over two floors, finished to a high standard with stylish interiors throughout. Features include a first floor open plan reception/kitchen, family bathroom, gas central heating, double glazing, quality floor coverings, and neutral decor.



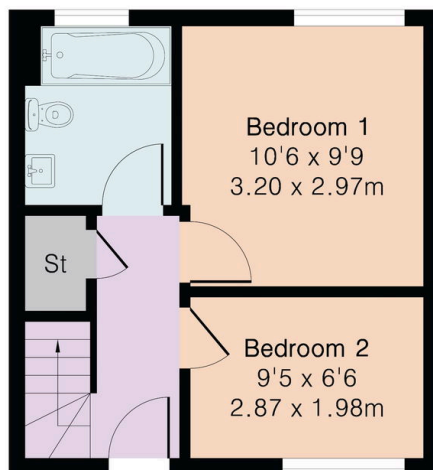
Key Features

- Short Distance to Orpington Town Centre
- Gas Central Heating and Double Glazing
- Modern Family Bathroom
- Stylish Interiors and Neutral Finish
- Stunning Two Bedroom Leasehold House (560 Sq.Ft)
- Easy Access Transport Links and Local Amenities
- Off Street Parking
- Light and Spacious First Floor Open Plan Reception/Kitchen
- Popular Gated Development
- Please Quote Ref TH0310 For All Enquiries

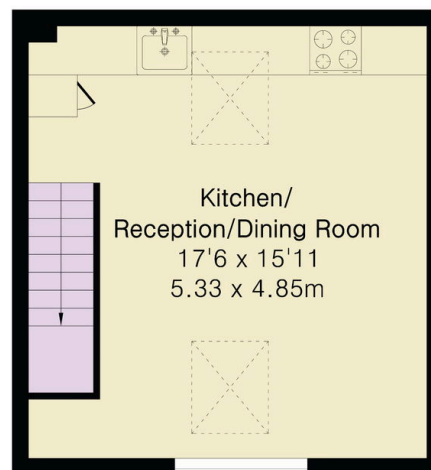
Approximate Gross Internal Area 560 sq ft - 52 sq m

Ground Floor Area 280 sq ft – 26 sq m

First Floor Area 280 sq ft – 26 sq m



Ground Floor



First Floor

