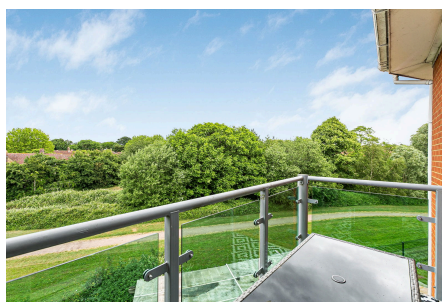
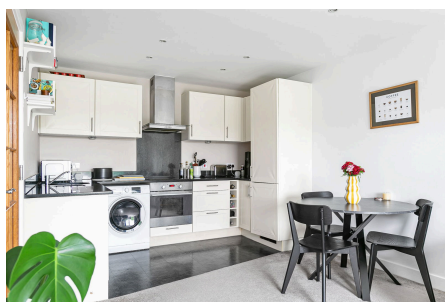


## Medhurst Drive, Bromley, BR1

Guide Price £300,000 - £325,000

2 2 1



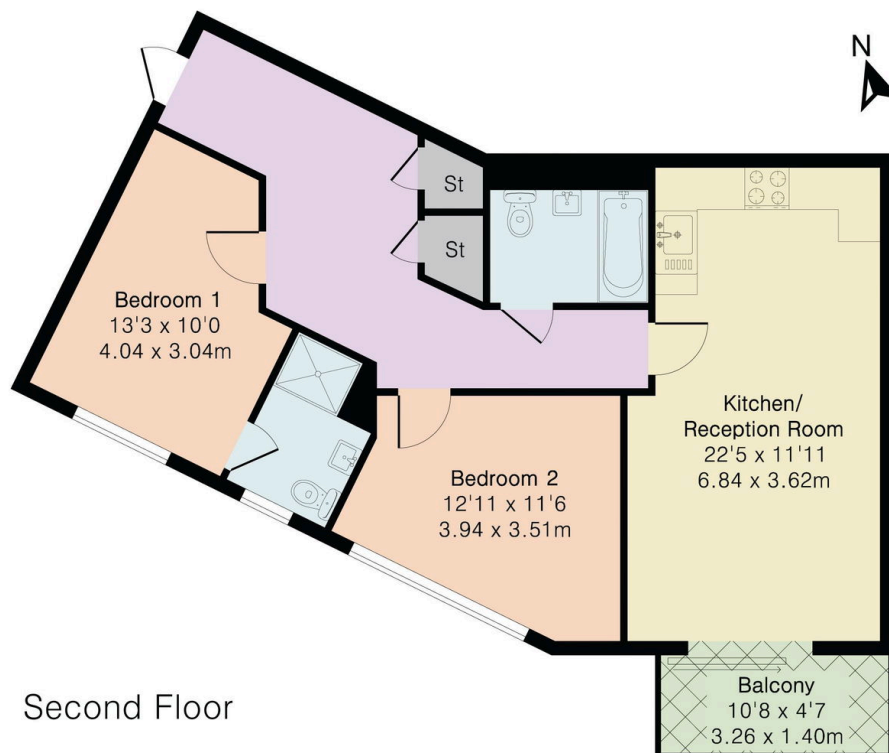
Please Quote Ref TH0310 For All Enquiries - GUIDE PRICE £300,000 - £325,000 - Stunning two bedroom second (top) floor apartment (763 Sq.Ft) with allocated parking and private balcony overlooking attractive communal gardens, ideally located in a sought after private gated development close to Beckenham Hill station, Beckenham Place Park and Bromley town centre. The property has been beautifully designed and appointed, offering bright, well planned accommodation with stylish interiors and quality finish throughout. Features include an inviting open plan reception/kitchen, modern bathroom and principal en-suite, gas central heating, double glazing, ample inbuilt storage, quality floor coverings and neutral decor.



## Key Features

- Please Quote Ref TH0310 For All Enquiries
- Stunning Two Bedroom Second (Top) Floor Apartment (763 Sq.Ft)
- Sought After Gated Development
- Stylish Interiors and Neutral Finish
- Bright and Spacious Open Plan Reception/Kitchen
- Private Balcony with Green Views
- Modern Bathroom and Principal En-Suite
- Allocated Parking
- Long Lease
- Close to Transport Links, Shops and Amenities

Approximate Gross Internal Area 763 sq ft - 71 sq m



Second Floor

