



Flat 16, Anthony Court 112-116, Croydon Road

£280,000

2 1

Please Quote Ref; TH0310 For All Enquiries. This well-proportioned, two-bedroom apartment (568 Sq. Ft) is located on the top floor of this purpose-built apartment and comes with communal gardens and off-street parking.

Floor Area
568 Sq.Ft sq. ft.

Tenure
156 Year Lease

Service Charge
£2385 per annum

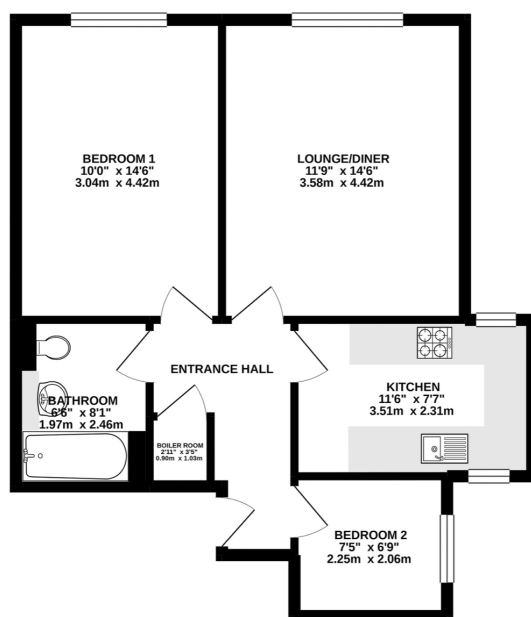
Ground Rent
£100 per annum

- Please Quote Ref; TH0310 For All Enquiries
- Chain Free
- Two Bedroom
- Communal Garden
- Off Street Parking
- Top Floor Flat
- New Kitchen With Integrated Appliances
- 568 Sq.Ft



Energy efficiency chart	Energy rating	Current	Potential
92+	A		
81-91	B	83 B	83 B
69-80	C		
55-68	D		
39-54	E		
21-38	F		
1-20	G		

GROUND FLOOR
568 sq.ft. (52.8 sq.m.) approx.



TOTAL FLOOR AREA: 568 sq ft (52.8 sq m.) approx.
Whilst every attempt has been made to ensure the accuracy of the floorplan contained herein, measurements of doors, windows, rooms and any other items are approximate and no responsibility is taken for any error, omission or misstatement. This plan is for illustrative purposes only and should be used as such for only prospective purchase. The services, systems and appliances shown have not been tested and no guarantee as to their operability or efficiency can be given.
Made with Homestyler 01/21

THOMAS HOWE
exp UK