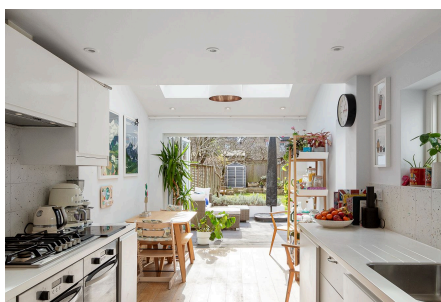


Tremaine Road, Beckenham, SE20

Guide Price £900,000 - £925,000

4 2 1



Please Quote Ref TH0310 For All Enquiries – GUIDE PRICE £900K - £925K - Stunning four double bedroom mid terrace Victorian property (1,845 Sq.Ft) with delightful garden and no onward chain, ideally situated close to fantastic transport links, schools and amenities. The property has been beautifully appointed, offering bright and spacious accommodation over three floors bursting with period appeal, sympathetically updated with stylish interiors and high quality finish throughout. Features include a gorgeous double length reception room, large well equipped eat-in kitchen/diner opening onto the garden, recently refurbished contemporary style bath/shower room, principal en-suite, large cellar, gas central heating via cast iron radiators, double glazing, high ceilings, exposed brickwork, attractive wood flooring, and feature fireplaces.



Key Features

- Please Quote Ref TH0310 For All Enquiries
- Stunning Four Bedroom Victorian Terraced House
- Fantastic Residential Location
- Period Appeal and Stylish Interiors
- Beautiful Double Length Reception Room
- Well Equipped Eat-In Kitchen/Diner
- Contemporary Style Family Bathroom and En-Suite
- Delightful Private Garden
- No Onward Chain
- Close to Excellent Transport Links, Shops, Schools and Amenities



Illustration for identification purposes only, measurements are approximate, not to scale. Fourtubs.co © 2025 (101181864)

