



# Persimmon

Together, we make your home



## Hauxley View

Amble • Northumberland



**Persimmon**

Together, we make your home

# Together, we make your home

When it comes to designing a new development, we apply the same philosophy every time – make it unique, make it personal. That's because we understand your new home is more than simply bricks and mortar. It's a private place of sanctuary where we hope you'll laugh, entertain and escape for many years to come.

**"With over 50 years of building excellence, find out more about us on page 4"**



**5 stars!**

We're proud of our 5 star builder status awarded by the national Home Builders Federation (HBF). It's a reflection of our commitment to delivering excellence always and putting our customers at the heart of all we do.



Hauxley View

## Find out more

About Persimmon Homes	4
Your journey with us and schemes to help	6
Living at Hauxley View	9
Our homes	10
Specifications	24
Sustainability	26
Personalise with Finishing Touches	28
Part L/Eco homes	30
Reasons to buy from us	33





Who we are

## A little bit about us

You're about to make one of the most exciting investments of your life! A beautiful place to call home for years to come. Here are some reasons to invest in a Persimmon home...

### Over 50 years of expertise

We've been building homes and communities since the early seventies, and just as fashions have moved on, so too has construction. Over half a century we've perfected processes, fine-tuned materials and honed skills to make us one of today's most modern and progressive home builders.

### Sustainability mission

We're committed to reducing our impact on the planet and building for a better tomorrow, with a dedicated in-house team focused on this. [Read more on page 26](#)

## Persimmon in numbers

It's not all about numbers we know, but to give you sense of scale here are a few:

**9,922**

homes  
delivered in  
2023

**200+**

locations  
across  
the UK

**4800+**

employees  
make it all  
happen

**452**

acres of  
public space  
created

**£2.3bn**

invested in  
local communities  
over the last  
5 years



## "Building sustainable homes and community hubs"

### Save money on your energy bills

The increased thermal retention from our insulation and double glazing, along with reduced water use thanks to efficient appliances, mean you'll automatically save money on your energy and water bills – and with the rising cost of living, this can make a real difference.



Take a look at the recently published HBF Watt a Save report to find out how much you could save.

### The Persimmon Pledge

The Persimmon Pledge is our commitment to making sure you receive exceptional customer service and relevant communications before, during and after you've moved in.

Find out more about the Persimmon Pledge.



### Accessible homes

It's crucial that your new home works perfectly for you and your needs. We build in line with Approved Document M accessibility requirements.



Scan the QR code to find out what each rating means.

### Giving back

We do everything we can to give back to our communities and proudly contribute towards community hubs, children's play areas, schools and sports facilities.

Our 'Community Champions' and 'Building Futures' programmes help to raise funds for projects and charities across Great Britain. If you'd like to get involved visit [persimmonhomes.com/community-champions](https://persimmonhomes.com/community-champions) to see if you could apply to support your local community.

### Help when you need it

You'll have a dedicated customer care helpline, plus cover for emergencies like complete loss of electricity, gas, water or drainage.

### 10-year warranty

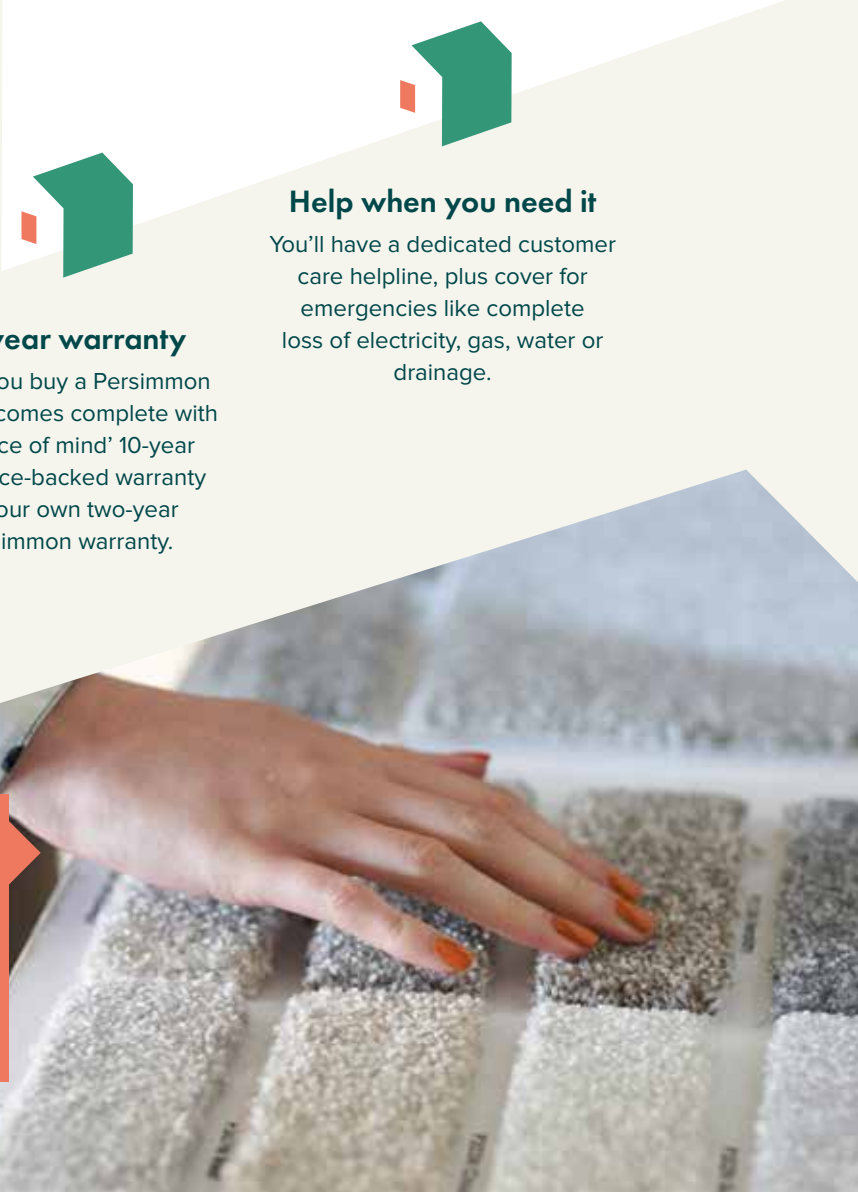
When you buy a Persimmon home it comes complete with a 'peace of mind' 10-year insurance-backed warranty and our own two-year Persimmon warranty.

### Happy hour

We run Customer Construction Clinics from our on-site sales offices each Monday from 5-6pm. Pop in to see the team both during and after you've moved in to your new home.

### Finishing Touches

We know you'll want to make your home your own, so we created 'Finishing Touches', our home personalisation service. **Read more on page 28**





With you all the way

# Your journey with us

From finding your perfect new home to moving in,  
we're here to help every step of the way.

1. .....→ 2. .....→ 3. ....

## Reservation

So you've seen a home you love? Speak to one of our friendly sales advisors who will help you secure your dream home.

## Solicitor

You'll need to instruct a solicitor or conveyancer at the point of reservation. Your sales advisor can recommend a local independent company.

## Mortgage application

Most people will need to apply for a mortgage. We can recommend independent financial advisors to give you the best impartial advice.

4. .....→ 5. .....→ 6. ....

## Personalise!

The bit you've been waiting for! Making the final choices for your new home. Depending on build stage you can also choose from a range of Finishing Touches.

## Exchange contracts

One step closer to moving in – this is where we exchange contracts and your solicitor will transfer your deposit.

## Quality assurance

Your home will be thoroughly inspected by site teams and will also have an Independent Quality Inspection to make sure it's ready for you to move into.

7. .....→ 8. .....→ 9. ....

## Home demo

Another exciting milestone! Here's where you get to see your new home before completion. You'll be shown how everything works and any questions can be answered.

## Handover

The moment you've been waiting for! The paperwork has been completed, the money transferred and now it's time to move in and start unpacking...

## After-care

Our site and customer care teams will support you every step of the way. You'll receive a dedicated customer care line number to deal with any issues.

[persimmonhomes.com](https://www.persimmonhomes.com)



# Need help?

One of the best things about buying a new-build home is the amazing offers and schemes you could benefit from. T&Cs apply.



**PART**  
EXCHANGE



**HOME**  
CHANGE



**EARLY**  
**BIRD**



**Deposit Unlock**



**Bank of Mum and Dad**



**Deposit Boost**



**Armed Forces/Key  
Workers Discount**





- Choice of 2, 3 and 4-bedroom homes
- Located close to stunning Northumberland coastline
- Excellent local schools nearby
- Good range of local amenities



**Scan me!**

For availability and pricing on our beautiful new homes at Hauxley View.





Amble • Northumberland

# Hauxley View

This impressive new development of homes is located in the charming coastal village of Amble, Northumberland – which back in its maritime history, proudly self-declared itself as the ‘friendliest port’.

## Designed with community in mind

Hauxley View lies on the southern edge of Amble just below the Northumberland Coast Area of Outstanding Natural Beauty. The harbour is still home to marine industries and local fishing and, tourism is another important part of life here so there are plenty of local services and amenities available. You can explore the area on the coastal road, the A1068, or take the inland A1 for a direct route between Berwick-upon-Tweed on the Scottish border and Newcastle-upon-Tyne to the south.

The stunning Northumberland coastline with its dramatic ruined castles and wide windswept beaches and is a complete contrast to the bustling nightlife and bright lights of Newcastle upon Tyne.

## Convenient local amenities

There’s a range of handy shops and amenities in Amble including a Co-op and Tesco Express. Families with children will welcome the Castlemania Indoor Adventure Play venue, less than a mile from Hauxley View. If you fancy eating out, The Masons Arms and Wellwood Arms are both close to the development. Further afield, Newbiggin-by-the-Sea lies just 11.9 miles to the south. Morpeth is 13.2 miles south-west, and the bright lights of Newcastle-upon-Tyne are 30 miles away to the south.

## Plenty of choices of schooling

For families with children, there are great school options; Amble First School, Amble Links School and The James Calvert Spence College are all a short distance from the development.

## EXPLORE

Start exploring...

Amble  
**1.5 miles**

Alnmouth  
**6.6 miles**

Newbiggin-by-the-Sea  
**11.9 miles**

Newcastle-upon-Tyne  
**30.1 miles**



Hauxley View

## Our homes

### 2 bedroom

 The Danbury

### 3 bedroom

 The Galloway

 The Sherwood

 The Braunton

 The Darwin

 The Saunton

 The Ashdown

 The Barnwood

### 4 bedroom

 The Burnham

 The Greenwood

 The Lambridge

 The Wychwood

---

 Affordable Housing

Developed by  
Charles Church

Development by  
Charles Church Homes

Development by  
Charles Church Homes



ment by  
uch Homes



Sub Station

Development by  
Charles Chruuch Homes

This site layout is intended for illustrative purposes only, and may be subject to change, for example, in response to market demand, ground conditions or technical and planning reasons. Trees, planting and public open space shown are indicative, actual numbers and positions may vary. This site plan does not form any part of a warranty or contract. Further information is available from a site sales advisor. The location of the affordable housing on this plan is indicative only and both the location and number of affordable housing plots may be subject to change.



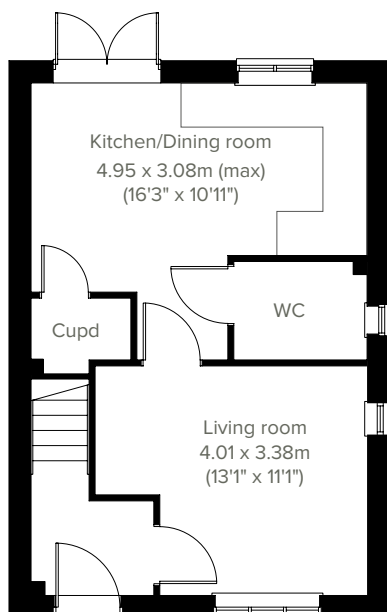


3 bedroom home

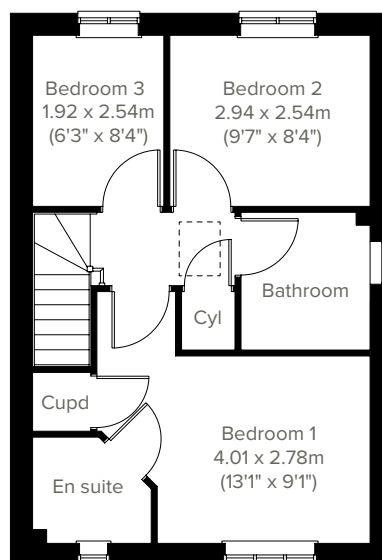
# The Danbury



Perfect for the way we live today, the three-bedroom Danbury has a modern open plan kitchen/dining room with French doors leading into the garden and a spacious front-aspect living room that's ideal for entertaining. Upstairs there are three bedrooms - bedroom one has an en suite - and a family-sized bathroom. Appealing to families, first-time buyers and young professionals.



**GROUND FLOOR**



**1ST FLOOR**

Please note that elevation treatments and window/door positions may vary from plot to plot. Plot specific information will be confirmed on your reservation check list.

This information is for guidance only and does not form any part of any contract or constitute a warranty. Illustrations are of typical elevations and may vary. Floor plans are not drawn to scale and window positions may vary. Room dimensions are subject to a +/- 50mm (2") tolerance and are based on the maximum dimensions in each room. Please consult your sales advisor on site for specific elevations, room dimensions and external finishes. The EPC ratings are estimated and vary between home types, orientation and developments. Accessible and adaptable dwelling requirements are based upon the internal arrangements only. External requirements may vary between local authority and developments.

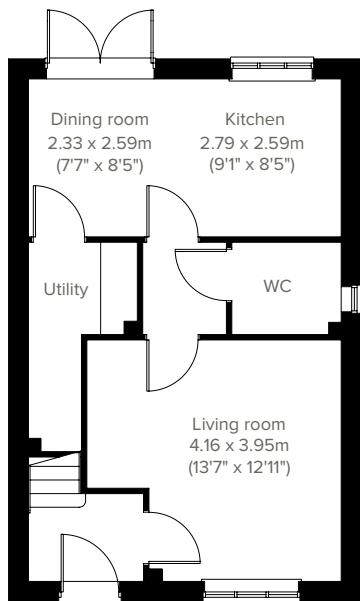


# The Galloway

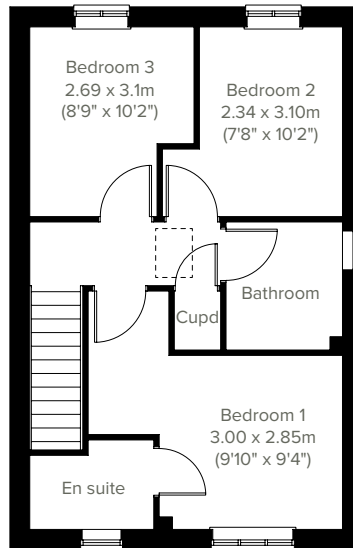
3 bedroom home



The popular Galloway is a three-bedroom family home with bright and modern open plan kitchen/dining room with French doors leading into the garden and a front-aspect living room. The downstairs WC, utility room, en suite to bedroom one and a handy storage cupboard mean it ticks all the boxes for practical family living.



## GROUND FLOOR



## 1ST FLOOR

Please note that elevation treatments and window/door positions may vary from plot to plot. Plot specific information will be confirmed on your reservation check list.

This information is for guidance only and does not form any part of any contract or constitute a warranty. Illustrations are of typical elevations and may vary. Floor plans are not drawn to scale and window positions may vary. Room dimensions are subject to a +/- 50mm (2") tolerance and are based on the maximum dimensions in each room. Please consult your sales advisor on site for specific elevations, room dimensions and external finishes. The EPC ratings are estimated and vary between home types, orientation and developments. Accessible and adaptable dwelling requirements are based upon the internal arrangements only. External requirements may vary between local authority and developments.



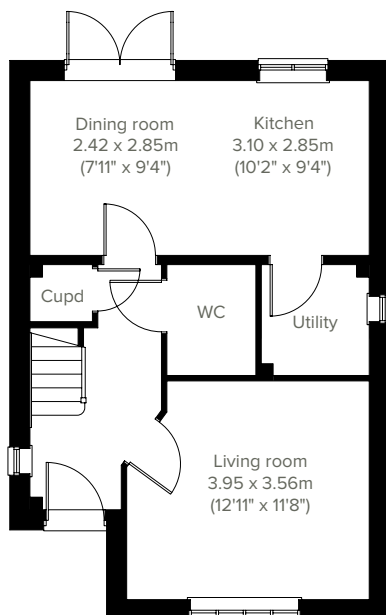


3 bedroom home

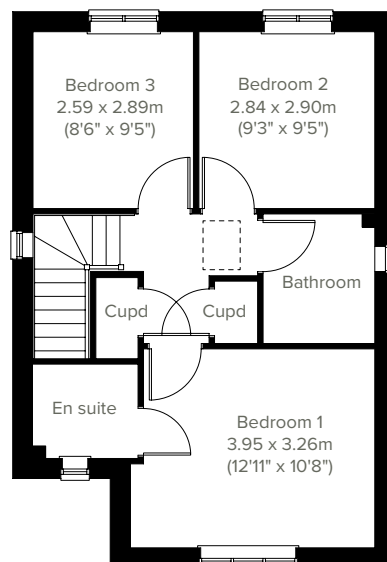
# The Sherwood



The Sherwood is a modern home ideal for family life. This three-bedroom home features an open plan kitchen/dining room with French doors leading into the garden, a handy utility room, a front-aspect living room, plus under-stairs storage and a WC. The first floor has three good-sized bedrooms, one with an en suite, and the main family bathroom.



**GROUND FLOOR**



**1ST FLOOR**

Please note that elevation treatments and window/door positions may vary from plot to plot. Plot specific information will be confirmed on your reservation check list.

This information is for guidance only and does not form any part of any contract or constitute a warranty. Illustrations are of typical elevations and may vary. Floor plans are not drawn to scale and window positions may vary. Room dimensions are subject to a +/- 50mm (2") tolerance and are based on the maximum dimensions in each room. Please consult your sales advisor on site for specific elevations, room dimensions and external finishes. The EPC ratings are estimated and vary between home types, orientation and developments. Accessible and adaptable dwelling requirements are based upon the internal arrangements only. External requirements may vary between local authority and developments.



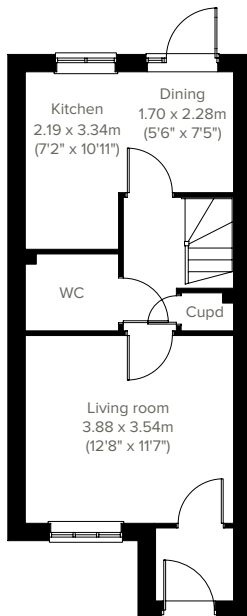


# The Braunton

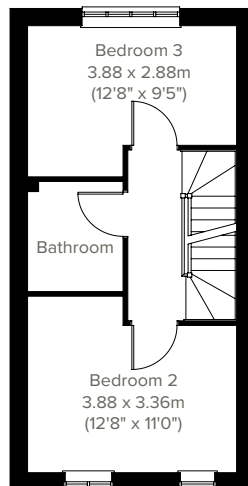
3 bedroom home



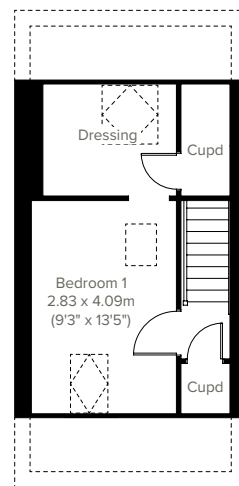
A superb family home, the Braunton features a bright open plan kitchen/dining room with access to the garden, and a spacious front-aspect living room. The WC and storage cupboard ensure it's practical as well as stylish. Upstairs you'll find two bedrooms and a family-sized bathroom and on the top floor bedroom one benefits from a dressing area and two handy storage cupboards.



**GROUND FLOOR**



**1ST FLOOR**



**2ND FLOOR**

Please note that elevation treatments and window/door positions may vary from plot to plot. Plot specific information will be confirmed on your reservation check list.

This information is for guidance only and does not form any part of any contract or constitute a warranty. Illustrations are of typical elevations and may vary. Floor plans are not drawn to scale and window positions may vary. Room dimensions are subject to a +/- 50mm (2") tolerance and are based on the maximum dimensions in each room. Please consult your sales advisor on site for specific elevations, room dimensions and external finishes. The EPC ratings are estimated and vary between home types, orientation and developments. Accessible and adaptable dwelling requirements are based upon the internal arrangements only. External requirements may vary between local authority and developments.

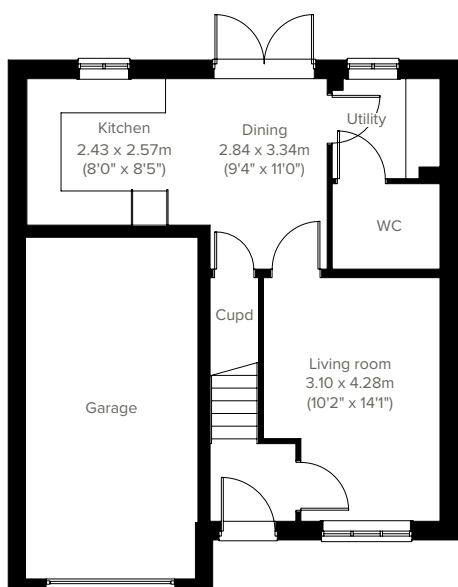


3 bedroom home

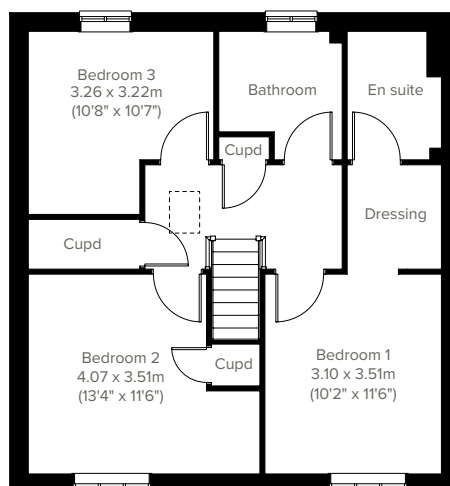
# The Darwin



A fantastic family home, the Darwin features a stunning open plan kitchen/dining room with French doors opening into the garden and an equally impressive living room. A downstairs WC and utility room ensure it's practical as well as stylish. Upstairs you'll find three bedrooms, including a spacious bedroom one - with an en suite and dressing area - a family-sized bathroom and three handy storage cupboards.



**GROUND FLOOR**



**1ST FLOOR**

Please note that elevation treatments and window/door positions may vary from plot to plot. Plot specific information will be confirmed on your reservation check list.

This information is for guidance only and does not form any part of any contract or constitute a warranty. Illustrations are of typical elevations and may vary. Floor plans are not drawn to scale and window positions may vary. Room dimensions are subject to a +/- 50mm (2") tolerance and are based on the maximum dimensions in each room. Please consult your sales advisor on site for specific elevations, room dimensions and external finishes. The EPC ratings are estimated and vary between home types, orientation and developments. Accessible and adaptable dwelling requirements are based upon the internal arrangements only. External requirements may vary between local authority and developments.

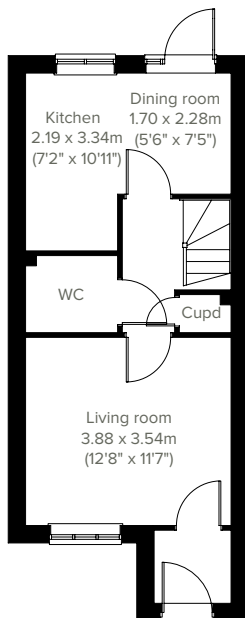


# The Saunton

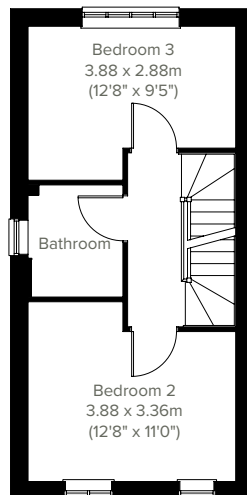
3 bedroom home



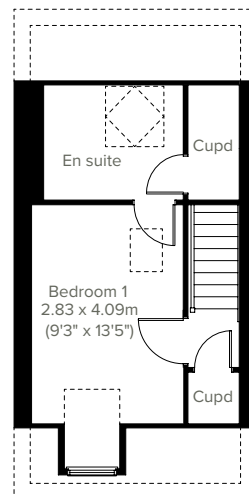
An attractive three-storey, three-bedroom home, the Saunton has a well-proportioned living room, a modern open plan kitchen/dining room and three good-sized bedrooms. The top floor bedroom one has a spacious en suite. The enclosed porch, downstairs WC, three storage cupboards and off-road parking means it's practical as well as stylish.



**GROUND FLOOR**



**1ST FLOOR**



**2ND FLOOR**

Please note that elevation treatments and window/door positions may vary from plot to plot. Plot specific information will be confirmed on your reservation check list.

This information is for guidance only and does not form any part of any contract or constitute a warranty. Illustrations are of typical elevations and may vary. Floor plans are not drawn to scale and window positions may vary. Room dimensions are subject to a +/- 50mm (2") tolerance and are based on the maximum dimensions in each room. Please consult your sales advisor on site for specific elevations, room dimensions and external finishes. The EPC ratings are estimated and vary between home types, orientation and developments. Accessible and adaptable dwelling requirements are based upon the internal arrangements only. External requirements may vary between local authority and developments.



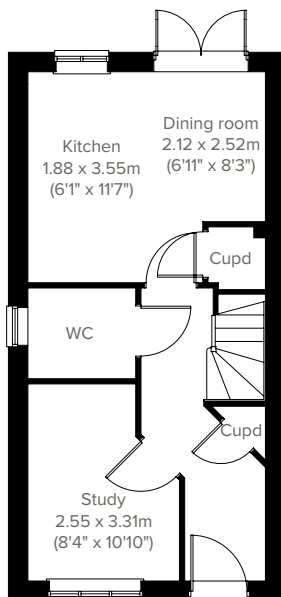


3 bedroom home

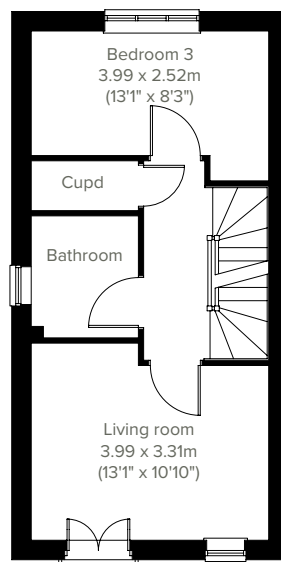
# The Ashdown



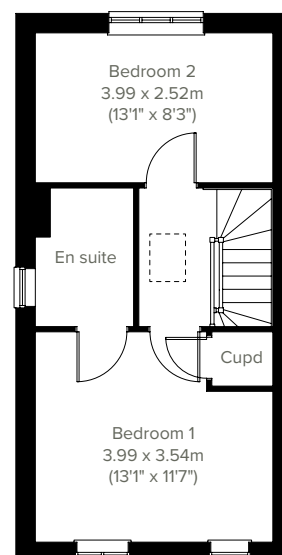
Perfect for the way we live today, the three-bedroom Ashdown has a modern open plan kitchen/dining room with French doors opening into the garden and a handy separate study. The first floor is home to the living room, bedroom three and the family bathroom. On the second floor there are two nicely-proportioned bedrooms - one with en suite - and a handy storage cupboard.



**GROUND FLOOR**



**1ST FLOOR**



**2ND FLOOR**

Please note that elevation treatments and window/door positions may vary from plot to plot. Plot specific information will be confirmed on your reservation check list.

This information is for guidance only and does not form any part of any contract or constitute a warranty. Illustrations are of typical elevations and may vary. Floor plans are not drawn to scale and window positions may vary. Room dimensions are subject to a +/- 50mm (2") tolerance and are based on the maximum dimensions in each room. Please consult your sales advisor on site for specific elevations, room dimensions and external finishes. The EPC ratings are estimated and vary between home types, orientation and developments. Accessible and adaptable dwelling requirements are based upon the internal arrangements only. External requirements may vary between local authority and developments.

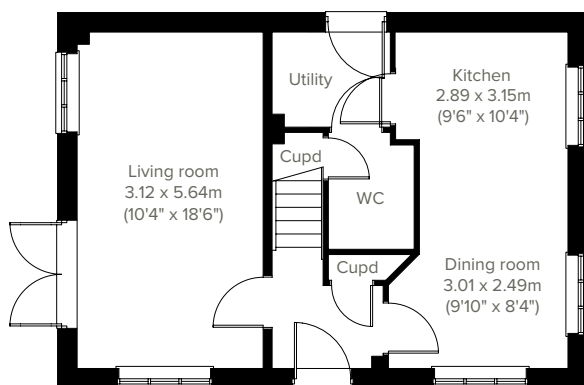


# The Barnwood

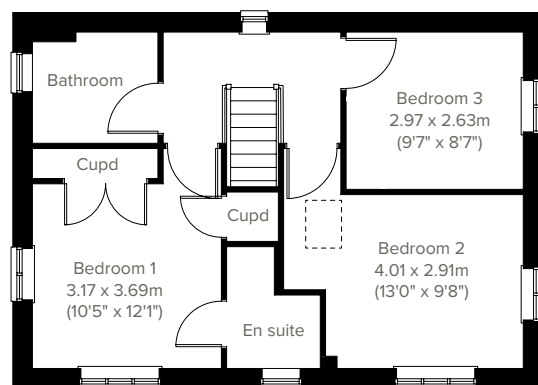
3 bedroom home



A thoughtfully-designed three-bedroom family home with much to offer, the Barnwood has a bright and modern open plan kitchen/dining room leading to a handy utility room with outside access. The spacious living room has French doors leading into the garden. The inner hallway, downstairs WC and cupboards take care of everyday storage. Plus there's an en suite to bedroom one and a family bathroom.



**GROUND FLOOR**



**1ST FLOOR**

Please note that elevation treatments and window/door positions may vary from plot to plot. Plot specific information will be confirmed on your reservation check list.

This information is for guidance only and does not form any part of any contract or constitute a warranty. Illustrations are of typical elevations and may vary. Floor plans are not drawn to scale and window positions may vary. Room dimensions are subject to a +/- 50mm (2") tolerance and are based on the maximum dimensions in each room. Please consult your sales advisor on site for specific elevations, room dimensions and external finishes. The EPC ratings are estimated and vary between home types, orientation and developments. Accessible and adaptable dwelling requirements are based upon the internal arrangements only. External requirements may vary between local authority and developments.



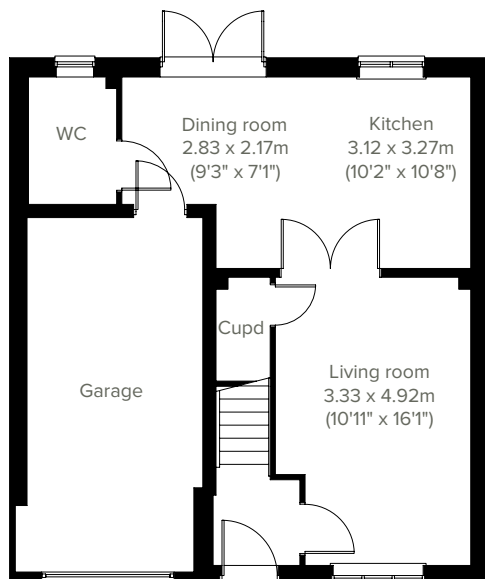


4 bedroom home

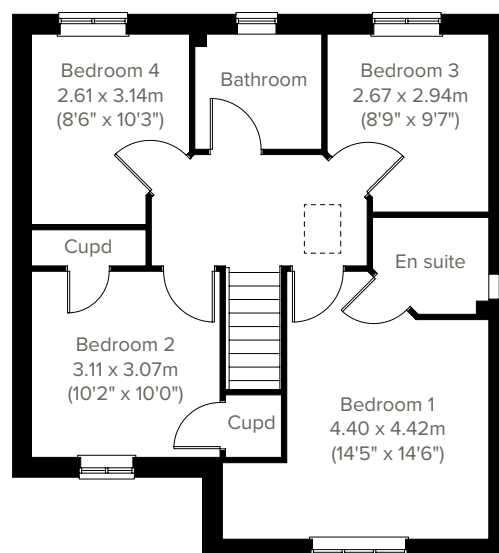
# The Burnham



The Burnham is a superb detached home with an integral garage, a good-sized living room with double doors leading into a bright open plan kitchen/dining room which has French doors leading into the garden - perfect for family life and entertaining. It's practical too with a downstairs WC and three storage cupboards. The large bedroom one has an en suite with the spacious landing leading on to three further bedrooms and the main family bathroom.



**GROUND FLOOR**



**1ST FLOOR**

Please note that elevation treatments and window/door positions may vary from plot to plot. Plot specific information will be confirmed on your reservation check list.

This information is for guidance only and does not form any part of any contract or constitute a warranty. Illustrations are of typical elevations and may vary. Floor plans are not drawn to scale and window positions may vary. Room dimensions are subject to a +/- 50mm (2") tolerance and are based on the maximum dimensions in each room. Please consult your sales advisor on site for specific elevations, room dimensions and external finishes. The EPC ratings are estimated and vary between home types, orientation and developments. Accessible and adaptable dwelling requirements are based upon the internal arrangements only. External requirements may vary between local authority and developments.



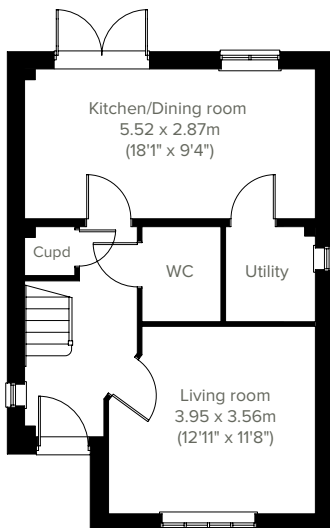


# The Greenwood

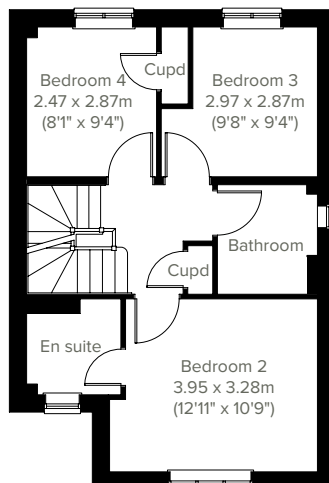
4 bedroom home



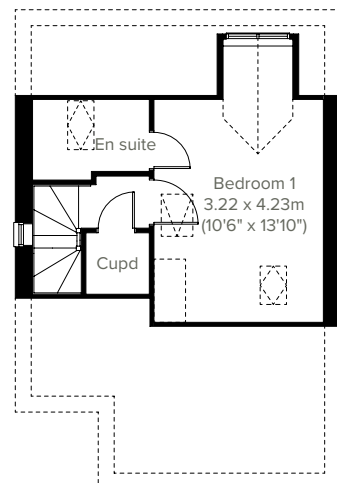
Enjoy the best of modern living in this popular four-bedroom home. The Greenwood's bright front-aspect living room, spacious kitchen/dining room with French doors leading into the garden, separate utility room, handy storage cupboard and downstairs WC complete the ground floor. The first floor consists of three bedrooms - bedroom two with an en suite and a family bathroom. On the second floor, bedroom one has an en suite and further storage.



**GROUND FLOOR**



**1ST FLOOR**



**2ND FLOOR**

Please note that elevation treatments and window/door positions may vary from plot to plot. Plot specific information will be confirmed on your reservation check list.

This information is for guidance only and does not form any part of any contract or constitute a warranty. Illustrations are of typical elevations and may vary. Floor plans are not drawn to scale and window positions may vary. Room dimensions are subject to a +/- 50mm (2") tolerance and are based on the maximum dimensions in each room. Please consult your sales advisor on site for specific elevations, room dimensions and external finishes. The EPC ratings are estimated and vary between home types, orientation and developments. Accessible and adaptable dwelling requirements are based upon the internal arrangements only. External requirements may vary between local authority and developments.

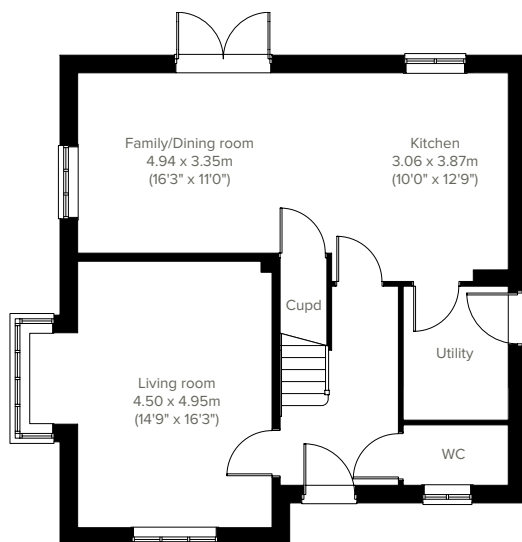


# The Lambridge

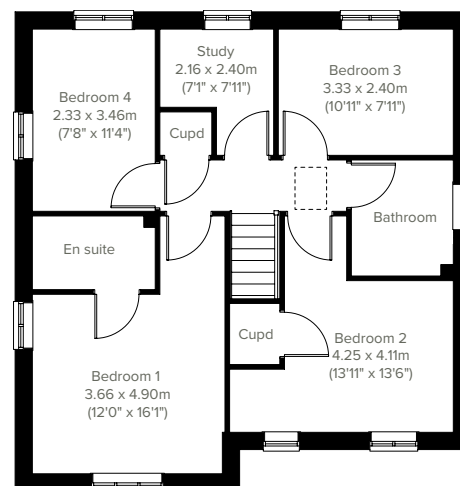
4 bedroom home



A beautifully-designed four-bedroom detached home, the Lambridge has everything you need for modern living. Downstairs there's a front-aspect living room with a bay window, a spacious kitchen/dining/family room with French doors leading into the rear garden. The first floor is home to a generous bedroom one with an en suite, plus two storage cupboards, a separate study and the family bathroom.



**GROUND FLOOR**



**1ST FLOOR**

Please note that elevation treatments and window/door positions may vary from plot to plot. Plot specific information will be confirmed on your reservation check list.

This information is for guidance only and does not form any part of any contract or constitute a warranty. Illustrations are of typical elevations and may vary. Floor plans are not drawn to scale and window positions may vary. Room dimensions are subject to a +/- 50mm (2") tolerance and are based on the maximum dimensions in each room. Please consult your sales advisor on site for specific elevations, room dimensions and external finishes. The EPC ratings are estimated and vary between home types, orientation and developments. Accessible and adaptable dwelling requirements are based upon the internal arrangements only. External requirements may vary between local authority and developments.



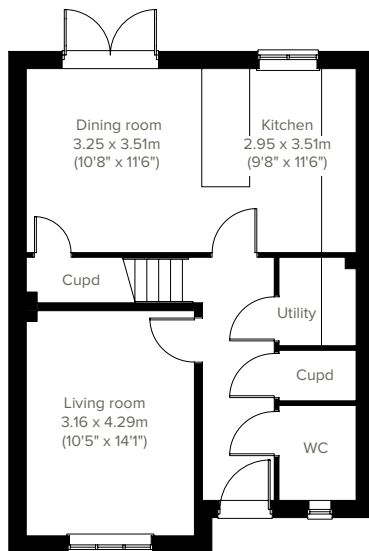


# The Wychwood

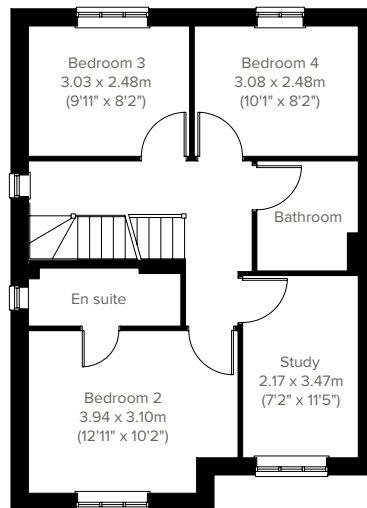
5 bedroom home



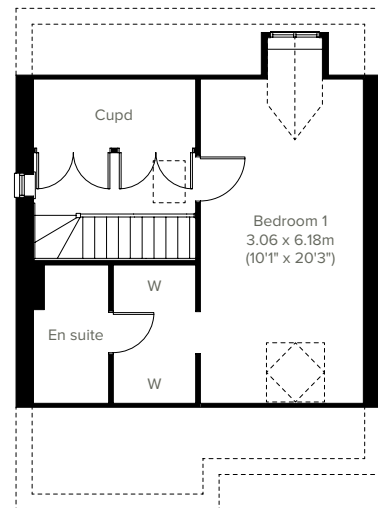
The Wychwood is a modern three-storey home ideal for family life. This four-bedroom home features an open plan kitchen/dining room with French doors leading into the garden, a handy utility room, a front-aspect living room, plus under-stairs storage and a WC. The first floor has three good-sized bedrooms, one with an en suite, the main family bathroom and a study. While on the top floor there's an impressive bedroom one with en suite, walk in wardrobe and further storage cupboard.



**GROUND FLOOR**



**1ST FLOOR**



**2ND FLOOR**

Please note that elevation treatments and window/door positions may vary from plot to plot. Plot specific information will be confirmed on your reservation check list.

This information is for guidance only and does not form any part of any contract or constitute a warranty. Illustrations are of typical elevations and may vary. Floor plans are not drawn to scale and window positions may vary. Room dimensions are subject to a +/- 50mm (2") tolerance and are based on the maximum dimensions in each room. Please consult your sales advisor on site for specific elevations, room dimensions and external finishes. The EPC ratings are estimated and vary between home types, orientation and developments. Accessible and adaptable dwelling requirements are based upon the internal arrangements only. External requirements may vary between local authority and developments.

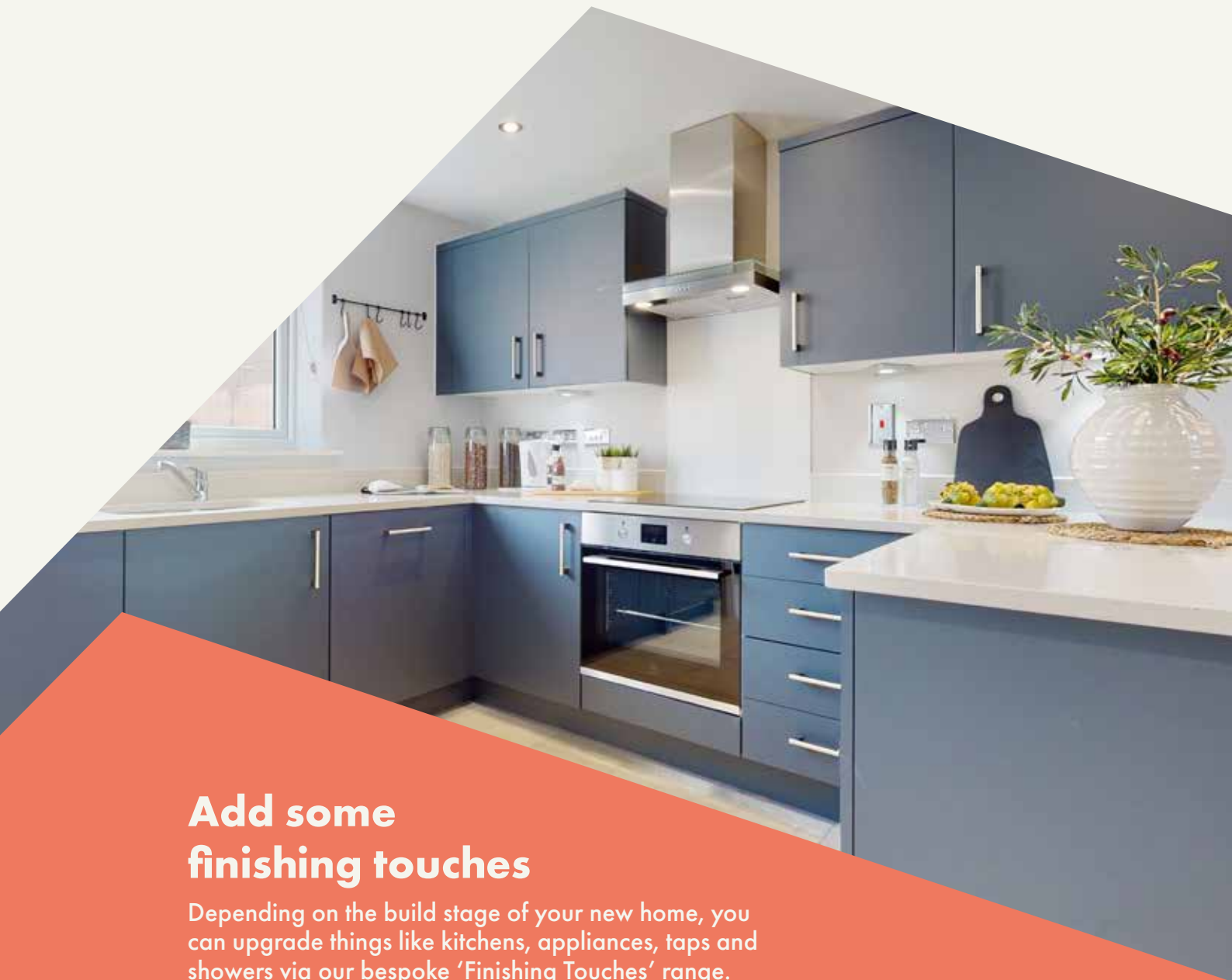




Hauxley View

# Specifications

Our homes include these items as standard to ensure you have everything you need to be comfortable from the day you move in. Built for today's modern lifestyles with sustainability in mind.



## Add some finishing touches

Depending on the build stage of your new home, you can upgrade things like kitchens, appliances, taps and showers via our bespoke 'Finishing Touches' range.



## External

### Walls

Traditional cavity walls.  
Inner: timber frame or block.  
Outer: Style suited to planned architecture.

### Roof

Tile or slate-effect with PVCu rainwater goods.

### Windows

Double glazed E-glass windows in PVCu frames.

### Doors

GRP-skinned external doors with PVCu frames.  
French doors to garden or balcony  
(where applicable).



## Internal

### Ceilings

Painted white.

### Lighting

Pendant or batten fittings with low-energy bulbs.

### Stairs

Staircase painted white.

### Walls

Painted in white emulsion.

### Doors

White pre-finished doors with white hinges.

### Heating

Gas fired combi boiler with radiators in all main rooms, with thermostatically-controlled valves to bedrooms.

### Insulation

Insulated loft and hatch to meet current building regulations.

### Electrics

Individual circuit breakers to consumer unit and double electric sockets to all main rooms.

### General

Media plate incorporating TV and telecommunication outlets to living room.



## Kitchen

### General

Fully-fitted kitchen with a choice of doors and laminate worktop with upstands to match (depending on build stage).

### Plumbing

Plumbing for washing machine.

### Appliances

Single electric stainless steel oven and gas hob in stainless steel with integrated stainless steel cooker hood.



## Bathroom

### Suites

White bathroom suites with chrome-finished fittings.

### Extractor fan

Extractor fan to bathroom and en suite (where applicable).

### Shower

Mira showers with chrome fittings to en suite. Where there is no en suite, Mira thermostatic shower with wall mounted shower head.

### Splashbacks

Splashback to sanitaryware walls in bathroom and en suite. Splashback to bath and full height tiled shower where separate enclosure only.

### General

En suite to bedroom(s) where applicable.



## Security

### Locks

Three-point locking to front and rear doors, locks to all windows (except escape windows).

### Fire

Smoke detectors wired to the mains with battery back-up.



## Garage & Gardens

### Garage

Garage, car ports or parking space.

### Garden

Front lawn turfed or landscaped (where applicable).

### Fencing

1.8 metre fence to rear garden, plus gate.





Energy efficiency built in

# Sustainability

**Our homes are typically 30% more efficient than traditional UK housing, helping you to save money and reduce your impact on the environment.**

We're proud that we already build our homes to high levels of energy efficiency, but there's still a way to go. Our in-house sustainability team is dedicated to our mission to have net zero carbon homes in use by 2030, and for our own operations to be net zero carbon by 2040.

To achieve this, we're working to science-based carbon reduction targets in line with the Paris Agreement's 1.5°C warming pledge, investing in low-carbon solutions and technology that will further reduce the carbon footprints of our homes and our impact on the planet.

## Energy efficiency built in:

- ✓ **PEA rating – B**  
Our typical B rating makes our homes much more efficient than traditional D-rated homes.
- ✓ **Up to 400mm roof space insulation**  
Warmer in winter, cooler in summer, reducing energy bills.
- ✓ **Argon gas filled double glazing**  
Greater insulation and reduced heat loss.
- ✓ **Energy efficient lighting**  
We use energy-saving LED lightbulbs in all our homes.
- ✓ **A-rated appliances**  
Many of our kitchen appliances have a highly efficient A rating.
- ✓ **A-rated boilers**  
Our condenser boilers far outperform non-condensing ones.
- ✓ **Local links**  
We're located close to amenities and public transport to help reduce your travel footprint.
- ✓ **Ultra-fast broadband**  
FibreNest fibre-to-the-home connectivity helps you live and work at home more flexibly.
- ✓ **Lower-carbon bricks**  
Our concrete bricks typically use 28% less carbon in manufacture than clay, giving total lifetime carbon savings of 2.4 tonnes of CO<sub>2</sub> per house built.



## Eco goodies

When you move in to your new Persimmon home you'll find some of our favourite eco brands in your Homemove box. These products are plastic free, refillable and ethically sourced.





Your home, your way

# Finishing Touches to make it yours

Our goal is to make your house feel like your home before  
you've even collected the keys.

Key to achieving this is giving you the creative freedom to add your own style and personality to every room through our fabulous Finishing Touches collection.

Featuring the very latest designs from a host of leading brands, Finishing Touches lets you personalise your home inside and out. And rest assured, every upgrade and item available has been carefully chosen to complement the style

and finish of your new home. Of course, the real beauty is that all these extras will be ready for the day you move in.

Thanks to our impressive buying power we can offer almost any upgrade you can imagine at a highly competitive price. It can all be arranged from the comfort and convenience of one of our marketing suites, in a personal design appointment.

## You can choose:



Kitchens



Appliances



Bathrooms



Flooring



Wardrobes



Fixtures & fittings

"One of the most exciting things about buying a brand new home is putting your own stamp on a blank canvas."



## Share & win!

Share your love for your new Persimmon home and you could win a £100 IKEA voucher. There is one up for grabs every month. For inspiration, check out past winners' homes on our Instagram page @persimmon\_homes

**#lovemypersimmonhome**

## The earlier you reserve, the greater the choice

We'll always try and accommodate the Finishing Touches you want, but they are build-stage dependent, so the earlier you reserve the better.

**[persimmonhomes.com/finishingtouches](https://persimmonhomes.com/finishingtouches)**

Finishing Touches are subject to availability and stage of construction. Prices for your specific home type will be in our price list. For a full list of Finishing Touches available for your home, please contact the sales advisor on site.



## Eco Range homes

New build homes are changing, and together, we're embracing the future. Recent updates to the Government's Part L building regulations mean from June 2023 our new Persimmon Eco Range homes will have a reduction of 31% in carbon emissions. This means a warmer, more energy-efficient home for you and the really cosy feeling of knowing it's better for the environment.

This means... **a saving of up to £6,730\*** over the lifetime of a 25 year mortgage.



## 31 % reduction in carbon emissions

**Solar panels** help boost your existing energy-efficient boiler using sustainable green energy. For full details of the number of solar panels (where applicable) and the location; please refer your sales advisor for details.

**EV charging** is a handy addition if you have an electric car, as you can charge it from the comfort of your own home. NB: Not all homes will have EV chargers as they're site and plot dependent. They can be added from our Finishing Touches range.

**Enhanced loft insulation** is a huge cosy blanket that slows down the transfer of heat between your home and the outside world. It not only warms your home in the winter but keeps it cooler in the summer.

**Waste water heat recovery** ensures the waste water from the shower heats the incoming cold water as it goes up the pipe so that the boiler doesn't have to work as hard to heat it.

**More thermally-efficient walls** mean less heat escaping, so you aren't as dependent on central heating, and whatever heat is generated is kept in your home.

**Our panelised offsite-manufactured timber** frame technology uses a unique, sustainable panel system which adds to the thermal efficiency of your home. \*NB: not all homes will be built using timber frame technology.

**Energy-efficient boilers** use the latest technology to warm your already well-insulated home. The controls allow you to optimise your energy saving whilst keeping you comfortable.

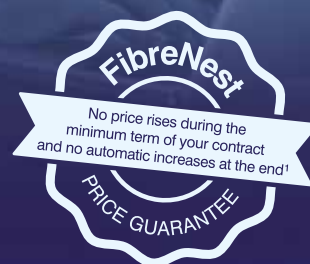
**A more thermally-efficient ground floor** will mean you'll benefit from the additional insulation we're incorporating in the floor construction.

\*When compared to a Victorian-built equivalent, savings could be up to £31,640. The £6,730 saving is in comparison to a Persimmon home built to current building regulations (2013).<sup>†</sup>NB: not all homes will be built using timber frame technology.

<sup>†</sup>NB: Not all homes will have EV Chargers, but they can be added from our Finishing Touches range.



Your home, better connected  
for a brighter future



# Ultrafast 500Mb broadband is available on this development.

FibreNest provides you with high-speed, totally unlimited  
full-fibre broadband to your home, at great prices.



## Choose the best package for you

We know every household is different, that's why we've put together six amazing packages to suit everyone's needs. From surfing the net on the sofa to binge-watching the latest box set, streaming music with friends to ruling the galaxy in the latest must-have game - we've got the service for you.



Scan me!  
For packages & pricing.



0333 234 2220



support@fibrenewest.com

### Get connected today!

To sign up you will need your Unique Customer Reference.  
Please ask your sales advisor for this:

C:

D:

P:





6 reasons why it pays to buy new

## Did you know?

Most of the benefits of buying new are obvious, but some are not. Here's a quick summary of the key reasons why it's such a smart move:

1.

### No chain

Few things are more annoying in the home buying process than a time-consuming chain you can't control. Buying new limits the chance of getting involved in one.

2.

### Energy efficient

Our homes include cost-effective combi boilers, first-rate loft insulation and draught-free double glazed windows to meet stringent energy-efficient standards, keeping your energy bills as low as possible.

3.

### Brand new

Absolutely everything in your new home is brand new. You get all the latest designs and tech, complete with manufacturers' warranties. Win-win.

4.

### More ways to buy

We offer a range of schemes to help get you on the property ladder, including Home Change and Part Exchange.

5.

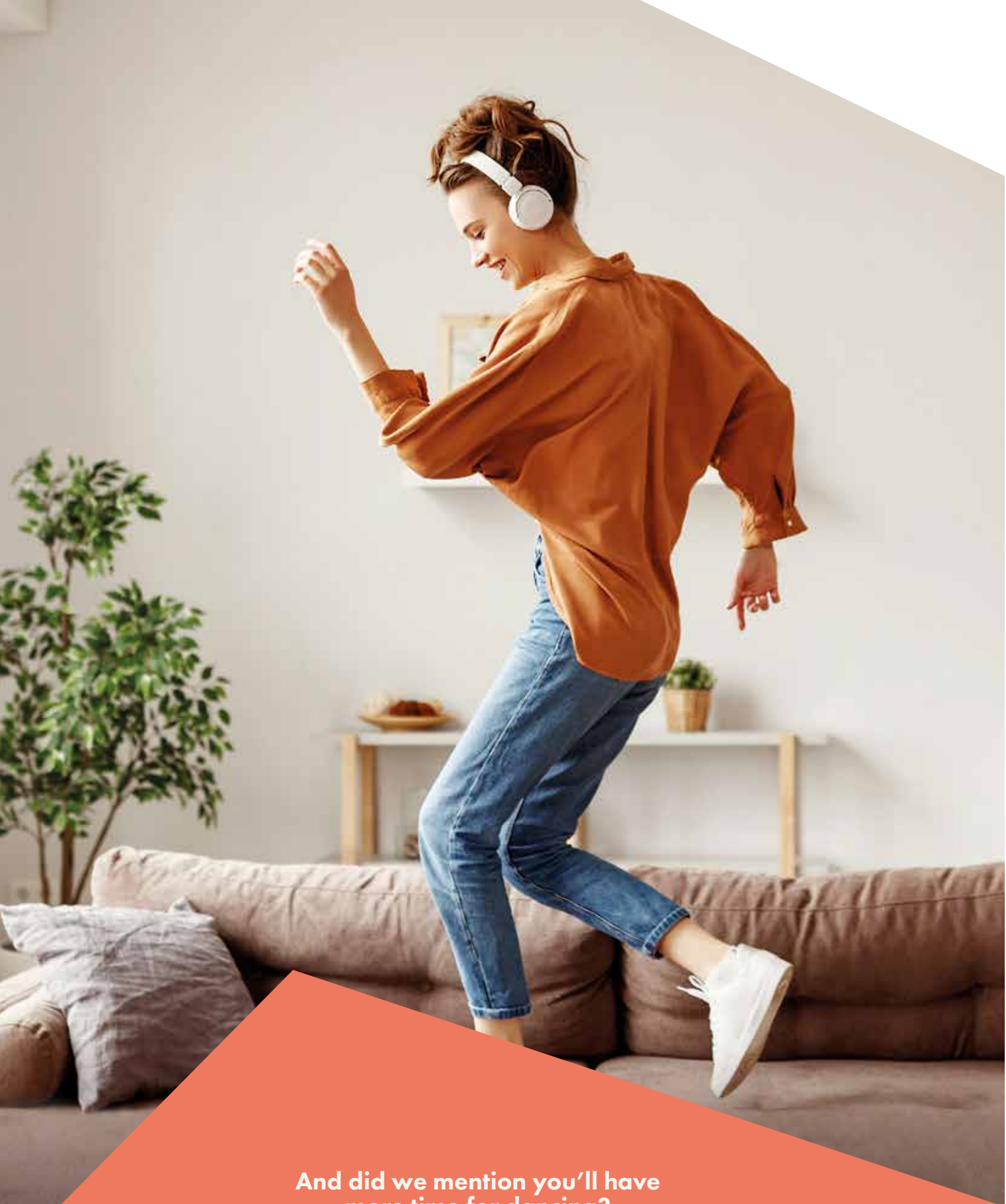
### 10 year warranty

All our new homes come with a ten-year, insurance-backed warranty, as well as our own two-year Persimmon warranty. In the unlikely event you ever need to claim, our Customer Care Team are there to help you.

6.

### Safe & secure

All our homes are built from fire-retardant materials and come with fitted smoke alarms and fire escape windows. They're also far more secure than older buildings thanks to the security locks and lighting we use.



**And did we mention you'll have  
more time for dancing?**

Buying new means you'll spend far less time on repairs and maintenance, after all, life's too short to spend every weekend doing DIY.







## Hauxley View

Hauxley Lane  
Amble  
Northumberland  
NE65 0JJ

T: 01665 660 771

E: [hauxleyview.nest@persimmonhomes.com](mailto:hauxleyview.nest@persimmonhomes.com)  
[persimmonhomes.com/hauxley-view](https://persimmonhomes.com/hauxley-view)

## Head Office

Persimmon Homes North East  
Persimmon House  
Roseden Way  
Newcastle upon Tyne  
NE13 9EA

T: 0191 238 9950

E: [nest.sales@persimmonhomes.com](mailto:nest.sales@persimmonhomes.com)  
[persimmonhomes.com](https://persimmonhomes.com)



Issue: February 2025 Ref: 470-344

Persimmon plc, Registered office: Persimmon House, Fulford, York YO19 4FE Registered in England no: 1818486

Hauxley View is a marketing name only. The copyright in this document and design is confidential to and the property of Persimmon Homes Developments 2025. These details are intended to give a general idea of the type of home but they do not form part of any specification or contract. The dimensions are approximate and may vary depending on internal finish. By the time you read this some of the details may have changed because of the Persimmon Homes policy of continually updating and improving design features. Therefore, please be sure to check the plan and specification in the sales office to keep you up-to-date with the latest improvements. The vendors of this property give notice that: (i) the particulars are produced in good faith, are set out as a general guide only and do not constitute any part of a contract; (ii) no person in the employment of Persimmon Homes or their authorised agents has any authority to make or give any representation or warranty whatever in relation to this property. Persimmon Homes is compliant with the New Homes Quality Code. Please ask your sales advisor if you have any further questions.