

UNPARALLELED
LIVING

— AT —



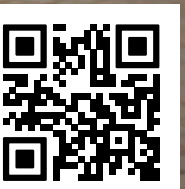
HENLEY GATE

Rental homes managed by

allsop

UNPARALLEDLIVING.UK

View our
available
rental homes





Our brand-new 2, 3, and 4 bedroom homes located in Ipswich, combine comfort, style, and convenience.

Experience hassle-free living and unparalleled support – a reflection of our commitment to exceeding expectations.

Features like our residents’ app, zero deposit scheme, and 24/7 support set us apart from other homes.



24/7 SUPPORT

Help is always available, day or night



PROFESSIONAL MANAGEMENT

By trusted and experienced professionals



RESIDENTS’ APP

Manage your home and maintenance from your phone



ZERO DEPOSIT

Moving made easier without upfront costs*



PET FRIENDLY

Our homes are for all the family, even the furry ones



FLEXIBLE RENTAL TERMS

Choose a rental plan that suits you and your lifestyle

DESIGNED FOR YOU

High-quality,
contemporary
living spaces

Specifications

Our homes are built with renters in mind, giving you a hassle-free, move-in-ready experience with high-quality appliances, flooring and finishes, all unfurnished so you can make it your own.



MODERN KITCHENS



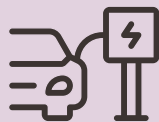
ULTRAFAST BROADBAND



DUAL ZONE HEATING*



SOLAR PANELS TO SOUTH-FACING ROOFS*



EV CHARGER ENABLED*



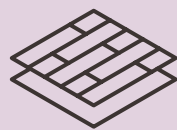
PRIVATE GARDENS



INTEGRATED WHITE GOODS



SOFT CLOSE HINGES



LUXURY VINYL PLANK FLOORING



SMART LOCK



Discover Ipswich

Where Heritage Meets Modern Living

Ipswich is a town balancing tradition with vibrant modernity. Discover its rich heritage, exciting cultural scene, fantastic shopping, and diverse culinary landscape.. Add the youthful energy brought by the University of Suffolk to the mix and Ipswich is a place that exudes energy.



IPSWICH TRAIN STATION



MARINA



IPSWICH TOWN FC



A Hub of Creativity

From the critically acclaimed New Wolsey Theatre to the plethora of art festivals that light up the town, Ipswich is a hotbed of creativity. Whether it's live performance, galleries, or music that excites you, there's always something to experience within this thriving cultural landscape.



IPSWICH TOWN

A Place to Call Home

Renting at our new development means becoming part of Ipswich's ever-evolving story. Imagine strolling along the historic waterfront, enjoying modern amenities, and feeling embraced by the town's welcoming community.

Ipswich's rich history isn't just a memory—it's a living thread that connects everyone who calls it home. By choosing to live here, you become part of a vibrant tapestry that continues to grow and thrive.

Discover how renting here weaves your life into something truly unique and fulfilling.

Effortless Connections



Ipswich offers excellent travel links, making it easy to reach popular destinations. Whether you prefer to travel by road, bus, or train, Ipswich provides a variety of convenient options.

By Road

Ipswich is well-connected by a network of major roads linking you with major cities or ensuring smooth travel to various destinations:

A12 Colchester in 35 minutes

A47 Bury St Edmunds in 35 minutes

A140 Norwich in 75 minutes

By Bus

Bus routes from Henley Gate

7 IPSWICH TOWN
28 minute journey

10 & 88 STOWMARKET
67 minute journey

9 & 75 FELIXSTOWE
80 minute journey

By Train

As a great rail hub, Ipswich railway station provides frequent and reliable services to several key destinations:

LONDON LIVERPOOL STREET
Direct trains to London take approximately 96 minutes, making it convenient for business or leisure trips to the capital.

CAMBRIDGE
A direct service to Cambridge takes about 84 minutes, ideal for accessing this historic university city.

NORWICH
Regular services to Norwich are available, with a journey time of around 39 minutes.



Local amenities

HENLEY GATE

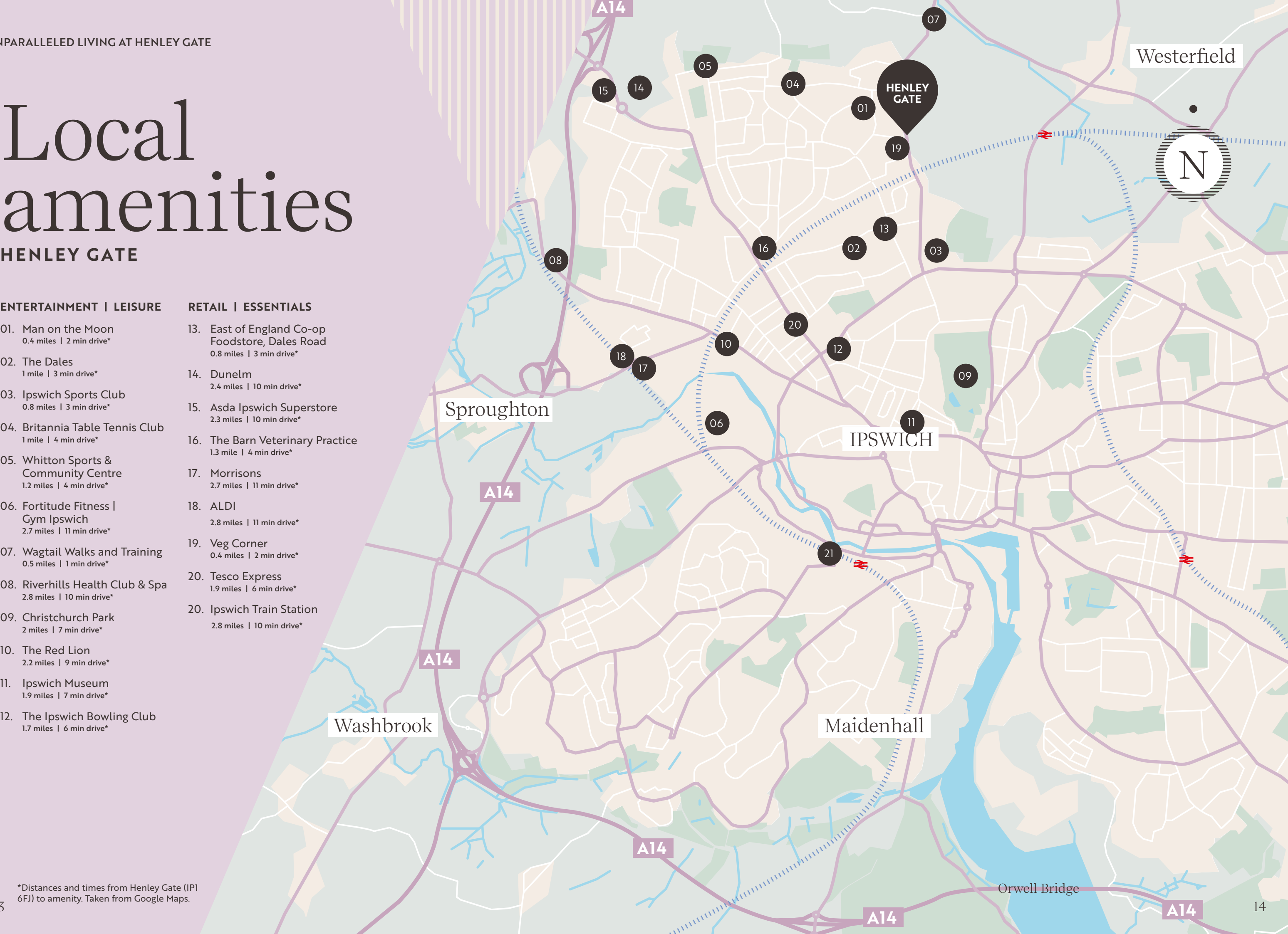
ENTERTAINMENT | LEISURE

- 01. Man on the Moon
0.4 miles | 2 min drive*
- 02. The Dales
1 mile | 3 min drive*
- 03. Ipswich Sports Club
0.8 miles | 3 min drive*
- 04. Britannia Table Tennis Club
1 mile | 4 min drive*
- 05. Whitton Sports & Community Centre
1.2 miles | 4 min drive*
- 06. Fortitude Fitness | Gym Ipswich
2.7 miles | 11 min drive*
- 07. Wagtail Walks and Training
0.5 miles | 1 min drive*
- 08. Riverhills Health Club & Spa
2.8 miles | 10 min drive*
- 09. Christchurch Park
2 miles | 7 min drive*
- 10. The Red Lion
2.2 miles | 9 min drive*
- 11. Ipswich Museum
1.9 miles | 7 min drive*
- 12. The Ipswich Bowling Club
1.7 miles | 6 min drive*

RETAIL | ESSENTIALS

- 13. East of England Co-op Foodstore, Dales Road
0.8 miles | 3 min drive*
- 14. Dunelm
2.4 miles | 10 min drive*
- 15. Asda Ipswich Superstore
2.3 miles | 10 min drive*
- 16. The Barn Veterinary Practice
1.3 mile | 4 min drive*
- 17. Morrisons
2.7 miles | 11 min drive*
- 18. ALDI
2.8 miles | 11 min drive*
- 19. Veg Corner
0.4 miles | 2 min drive*
- 20. Tesco Express
1.9 miles | 6 min drive*
- 20. Ipswich Train Station
2.8 miles | 10 min drive*

*Distances and times from Henley Gate (IP1 6FJ) to amenity. Taken from Google Maps.

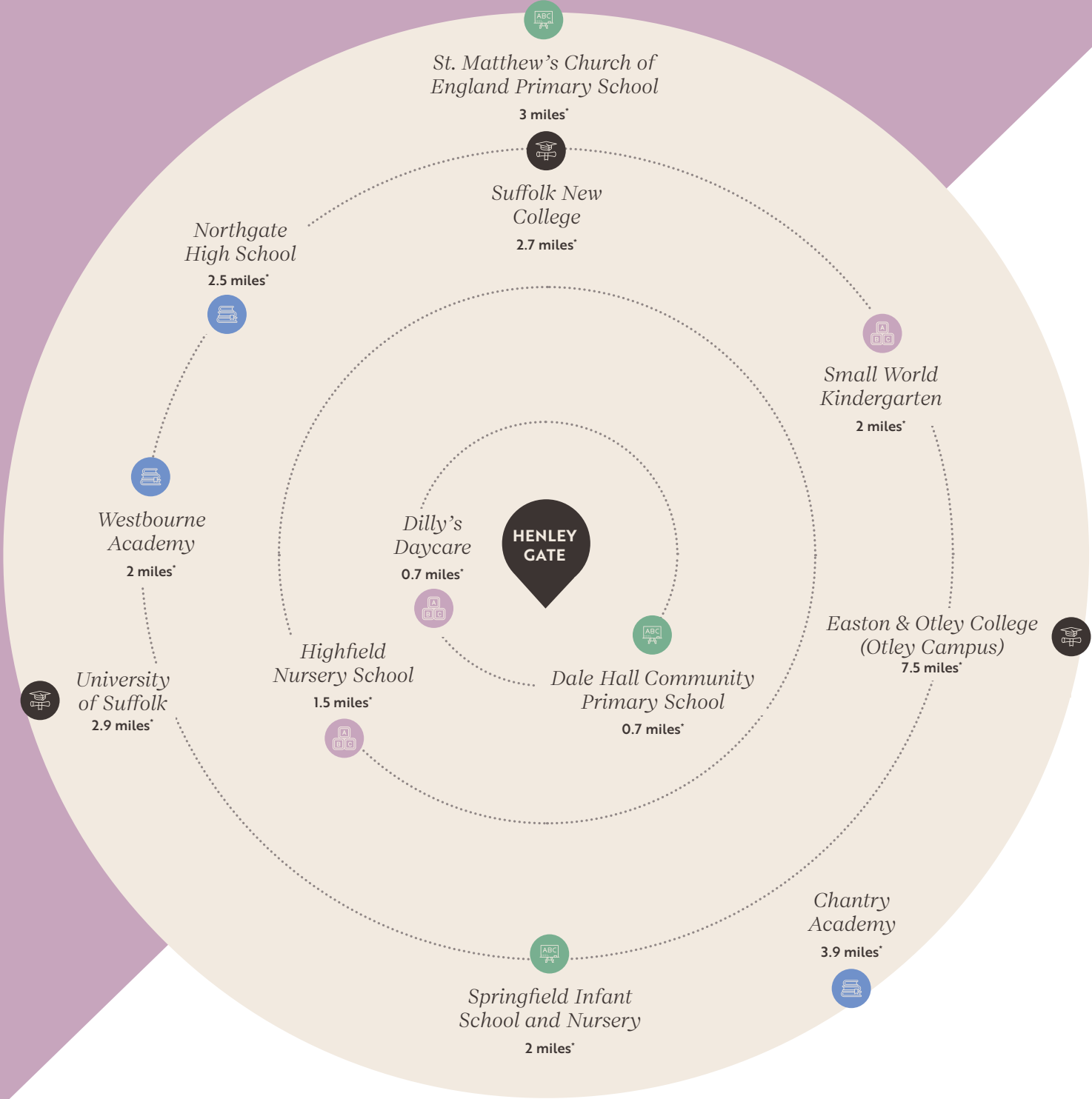






Local Schools


Ipswich has as range of high-quality educational institutions, ensuring that families have access to excellent schooling options for children of all ages.


Here's a quick look at some notable schools in the area.



- 

Pre-Schools and Nurseries
- 

Primary Schools
- 

Secondary Schools
- 

Higher Education

*Miles from Henley Gate. Distances taken from Google Maps. Proximity to schools mentioned is for information only and is not a guarantee of admittance.

Henley Gate: Location 1

Siteplan

2 bedroom homes

- AINSLIE
Plots: 47–49
- LEWIS
Plots: 33, 34, 36, 37 & 42–45
- WINCHAM 2
Plot: 41

3 bedroom homes

- EDWARDS
Plots: 23, 24, 129, 130, 62, 64, 67 & 68
- HADLEY
Plots: 32, 35, 38, 46, 50, 61 & 65
- KENNETT
Plot: 9, 10, 13–16
- LOGAN
Plots: 39 & 40

The development layout does not show details of gradients of land, boundary treatments, local authority street lighting or landscaping. It is our intention to build in accordance with this layout. However, there may be occasions when the house designs, boundaries, landscaping and positions of roads and footpaths change as the development proceeds. Please speak to a member of our Sales Team for more details.



Henley Gate: Location 2

Siteplan

2 bedroom homes

- ALVERTON
Plot: 43
- CHERWELL & CHICHESTER APARTMENTS
Plots: 44-49
- RAMSEY
Plots: 36-38, 40-42 & 50-52

3 bedroom homes

- HOPTON
Plots: 35 & 39
- MILDENHALL
Plots: 31-34, 80 & 81
- HOBBIESTER
Plots: 78 & 79
- BLEAN
Plot: 84 & 85

4 bedroom homes

- LAKENHEATH
Plots: 82 & 83



The development layout does not show details of gradients of land, boundary treatments, local authority street lighting or landscaping. It is our intention to build in accordance with this layout. However, there may be occasions when the house designs, boundaries, landscaping and positions of roads and footpaths change as the development proceeds. Please speak to a member of our Sales Team for more details.



Your Route Home



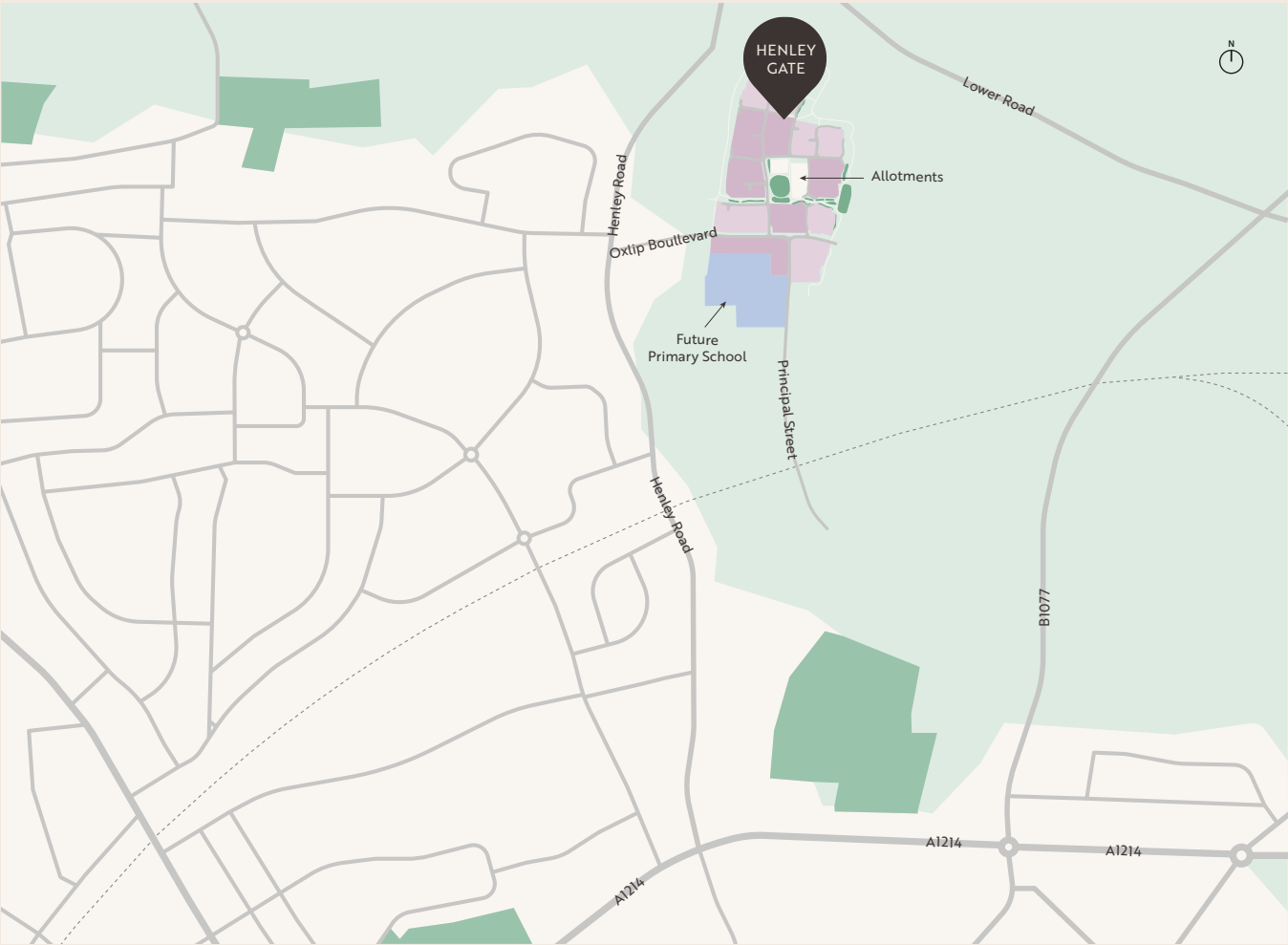
By Road

FROM THE NORTH

Take the A14 southbound, heading toward Ipswich. Continue on the A14 and take Exit 53 for the A1156 toward Ipswich. At the first roundabout, take the first exit, and at the second roundabout, go straight over. Shortly after, at the traffic lights, turn left onto Old Norwich Road, then right onto Whitton Church Lane. Follow this road until you reach Macaulay Road, then turn onto Defoe Road. Finally, turn right onto Henley Road, and your new home will be on the right.

FROM THE SOUTH

Take the A12 northbound, heading toward Ipswich. Continue on the A14 and take the exit for the A12 toward Ipswich. Follow the A12 into Ipswich and take the exit for the A1156 toward Ipswich North. Stay on the A1156 until you reach a T-junction, then turn left onto St Helen's Street. Continue along St Helen's Street, then turn right onto Fonnereau Road, which will lead you onto Henley Road. Follow Henley Road for a short distance, and your new home will be located on the right-hand side.



Unparalleled Experience of Modern Rental Living

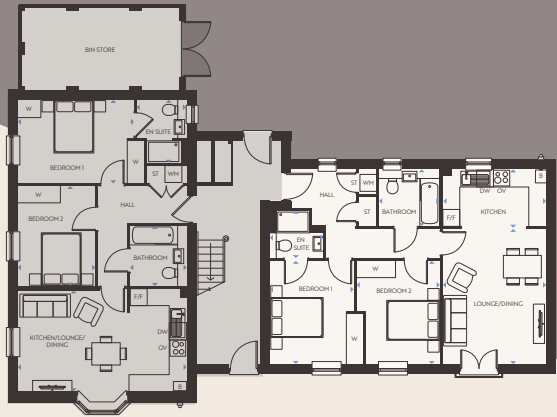




Chichester

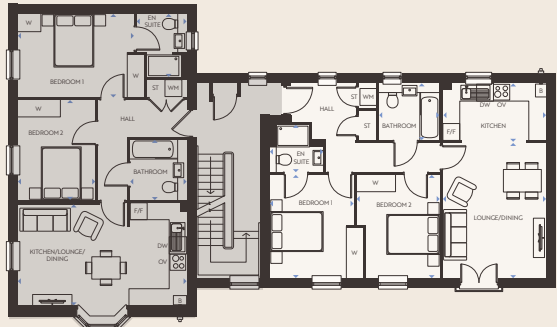
2 Bedroom Apartments

HENLEY GATE PLOTS: 40 (AS), 42 (OPP)



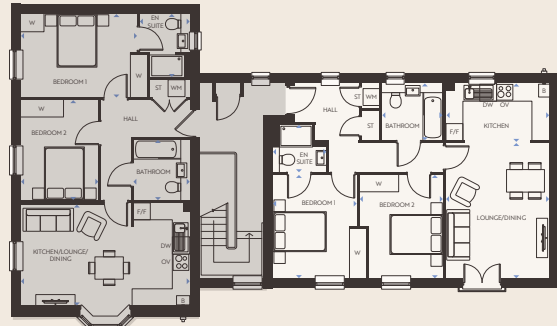
Ground Floor

- KITCHEN**
3.66m x 2.00m | 12' 0" x 6' 7"
- LIVING/DINING**
5.16m x 3.66m | 16' 11" x 12' 0"
- BATHROOM**
2.17m x 2.00m | 7' 2" x 6' 7"
- BEDROOM 1**
3.65m x 3.30m | 11' 12" x 10' 10"
- EN-SUITE**
1.89m x 1.70m | 6' 2" x 5' 7"
- BEDROOM 2**
3.65m x 3.00m | 11' 12" x 9' 10"



First & Second Floor

- KITCHEN**
3.66m x 2.00m | 12' 0" x 6' 7"
- LIVING/DINING**
4.76m x 3.66m | 15' 7" x 12' 0"
- BATHROOM**
2.17m x 2.00m | 7' 2" x 6' 7"
- BEDROOM 1**
3.65m x 3.30m | 11' 12" x 10' 10"
- EN-SUITE**
1.89m x 1.70m | 6' 2" x 5' 7"
- BEDROOM 2**
3.65m x 3.00m | 11' 12" x 9' 10"



KEY
B – Boiler | ST – Store | W – Wardrobe | WC – Cloakroom | WM – Washing Machine space | FF – Fridge/Freezer space | OV – Oven
◀ ▶ – Dimension Location

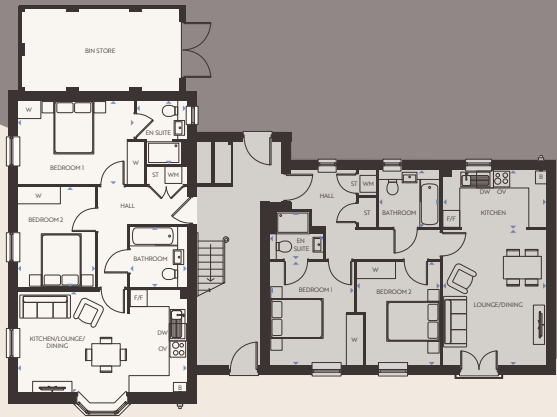
Floorplans shown are indicative only. The kitchen layout and furniture positions are for indicative purposes only. All dimensions indicated are approximate and should not be relied upon for carpet sizes or items of furniture. The developer reserves the right to make changes to these plans prior to exchange of contracts. For exact plot specification, details of external and internal finishes, dimensions and floorplan differences, please speak to a member of our Sales Team for more details.



Cherwell

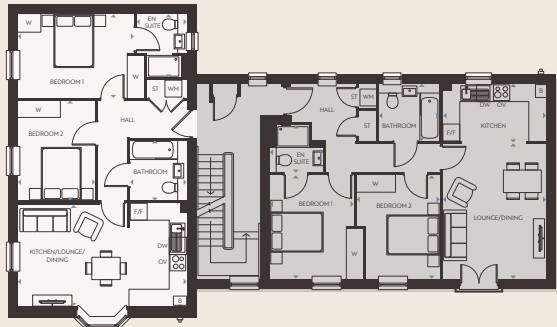
2 Bedroom Apartments

HENLEY GATE PLOTS: 40 (AS), 42 (OPP)



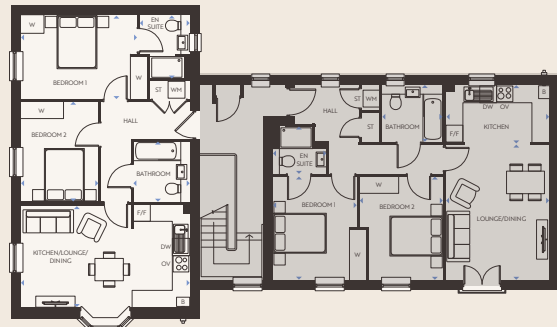
Ground Floor

- KITCHEN/LIVING/DINING**
7.50m x 6.01m | 24' 7" x 19' 8"
- BATHROOM**
2.17m x 2.00m | 7' 2" x 6' 7"
- BEDROOM 1**
4.49m x 2.95m | 14' 9" x 9' 8"
- EN-SUITE**
2.22m x 1.78m | 7' 3" x 5' 10"
- BEDROOM 2**
3.57m x 2.75m | 11' 9" x 9' 0"



First & Second Floor

- KITCHEN/LIVING/DINING**
7.45m x 5.46m 24' 5" x 17' 11"
- BATHROOM**
2.17m x 2.00m 7' 2" x 6' 7"
- BEDROOM 1**
4.49m x 2.95m 14' 9" x 9' 8"
- EN-SUITE**
2.22m x 1.77m 7' 3" x 5' 10"
- BEDROOM 2**
3.5m7 x 2.75m 11' 9" x 9' 0"



KEY
B – Boiler | ST – Store | W – Wardrobe | WC – Cloakroom | WM – Washing Machine space | FF – Fridge/Freezer space | OV – Oven
◀▶ – Dimension Location

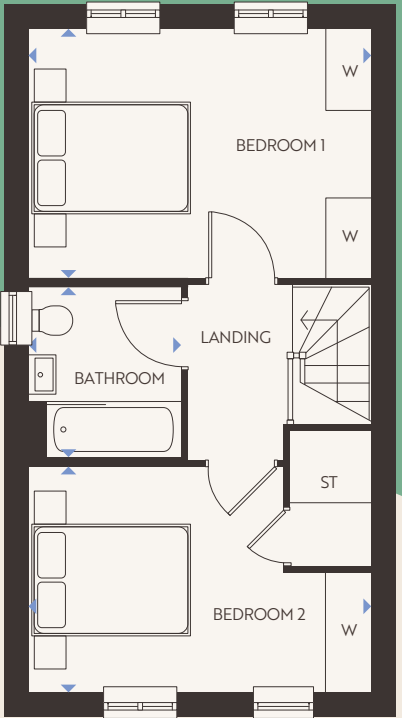
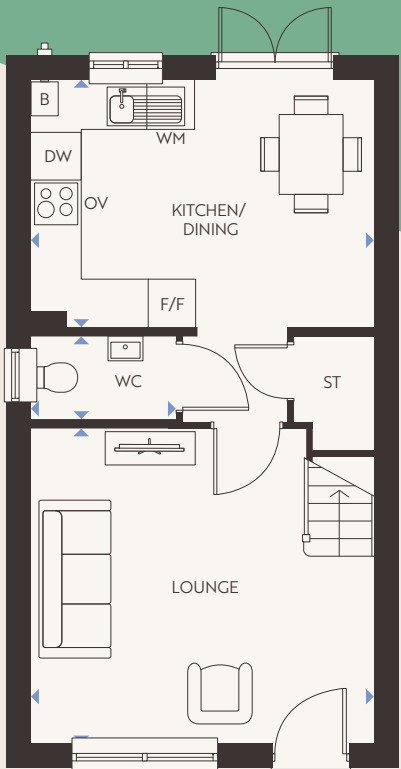
Floorplans shown are indicative only. The kitchen layout and furniture positions are for indicative purposes only. All dimensions indicated are approximate and should not be relied upon for carpet sizes or items of furniture. The developer reserves the right to make changes to these plans prior to exchange of contracts. For exact plot specification, details of external and internal finishes, dimensions and floorplan differences, please speak to a member of our Sales Team for more details.



Ramsey

2 Bedroom Homes

HENLEY GATE PLOTS: 40 (AS), 42 (OPP)



Ground Floor

- KITCHEN/DINING**
4.29m x 3.09m | 14' 1" x 10' 1"
- LOUNGE**
4.37m x 3.93m | 14' 4" x 12' 11"
- WC**
1.83m x 1.03m | 5' 12" x 3' 5"

First Floor

- BEDROOM 1**
4.37m x 3.11m | 14' 4" x 10' 2"
- BEDROOM 2**
4.37m x 2.83m | 14' 4" x 9' 3"
- BATHROOM**
1.9m x 2.16m | 6' 4" x 7' 1"

KEY
B – Boiler | ST – Store | W – Wardrobe | WC – Cloakroom | WM – Washing Machine space | FF – Fridge/Freezer space | OV – Oven ◀▶ – Dimension Location

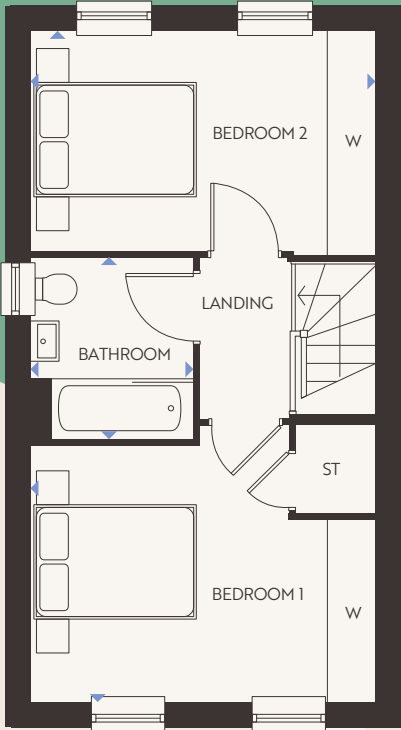
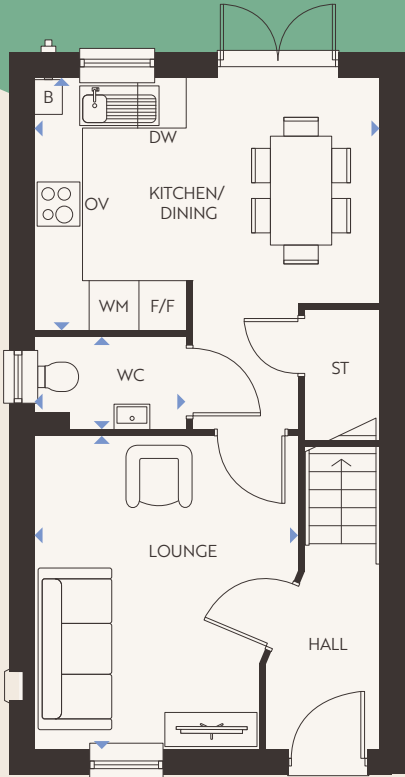
Floorplans shown are indicative only. The kitchen layout and furniture positions are for indicative purposes only. All dimensions indicated are approximate and should not be relied upon for carpet sizes or items of furniture. The developer reserves the right to make changes to these plans prior to exchange of contracts. For exact plot specification, details of external and internal finishes, dimensions and floorplan differences, please speak to a member of our Sales Team for more details.



Lewis

2 Bedroom Homes

HENLEY GATE PLOTS: 29, 42 & 44 (AS), 28, 43 & 45 (OPP)



Ground Floor

KITCHEN/DINING
4.30m x 3.12m | 14' 1" x 10' 3"

LOUNGE
3.87m x 3.30m | 12' 8" x 10' 10"

WC
1.92m x 1.14m | 6' 3" x 3' 9"

First Floor

BEDROOM 1
4.30m x 3.16m 14' 1" x 10' 4"

BEDROOM 2
4.30m x 2.73m 14' 1" x 8' 12"

BATHROOM
2.24m x 2.02m 7' 4" x 6' 8"

KEY

B – Boiler | ST – Store | W – Wardrobe | WC – Cloakroom | WM – Washing Machine space | FF – Fridge/Freezer space | OV – Oven ◀▶ – Dimension Location

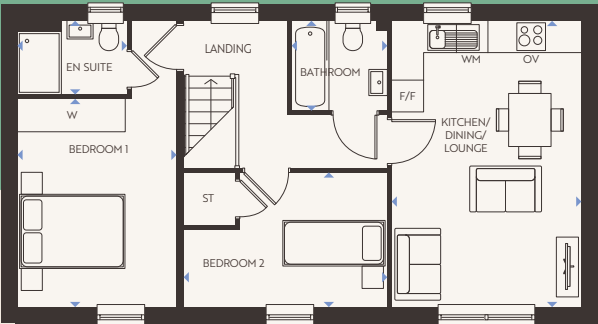
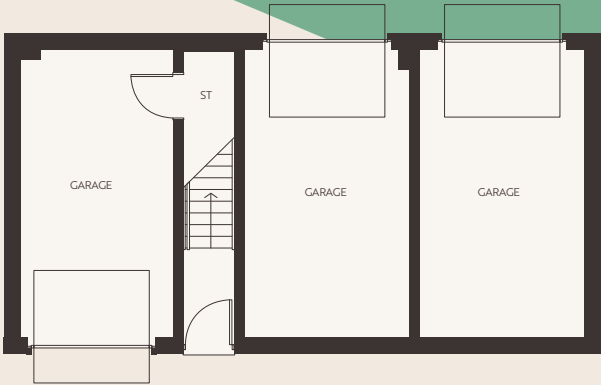
Floorplans shown are indicative only. The kitchen layout and furniture positions are for indicative purposes only. All dimensions indicated are approximate and should not be relied upon for carpet sizes or items of furniture. The developer reserves the right to make changes to these plans prior to exchange of contracts. For exact plot specification, details of external and internal finishes, dimensions and floorplan differences, please speak to a member of our Sales Team for more details.



Alverton

2 Bedroom Homes

HENLEY GATE PLOTS: 43 (AS)



Ground Floor

GARAGE
3.00m x 5.51m | 9' 10" x 18' 1"

First Floor

KITCHEN/DINING/LOUNGE
3.58m x 5.39m | 11' 9" x 17' 8"

BEDROOM 1
2.97m x 5.39m | 9' 9" x 17' 8"

EN-SUITE
2.03 x 1.39m | 6' 8" x 4' 7"

BEDROOM 2
3.87m x 2.52m | 12' 8" x 8' 3"

WC
1.80m x 1.70m | 5' 11" x 5' 7"

KEY

ST – Store | W – Wardrobe | WC – Cloakroom | WM – Washing Machine space | FF – Fridge/Freezer space | OV – Oven
◀▶ – Dimension Location

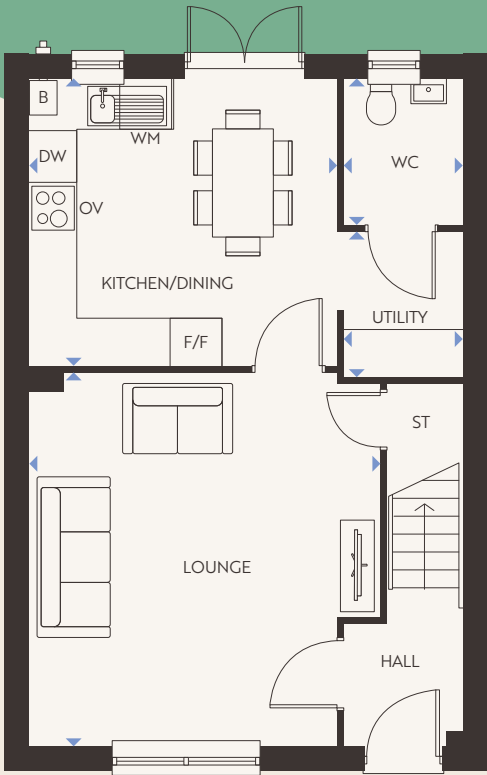
Floorplans shown are indicative only. The kitchen layout and furniture positions are for indicative purposes only. All dimensions indicated are approximate and should not be relied upon for carpet sizes or items of furniture. The developer reserves the right to make changes to these plans prior to exchange of contracts. For exact plot specification, details of external and internal finishes, dimensions and floorplan differences, please speak to a member of our Sales Team for more details.



Ainslie

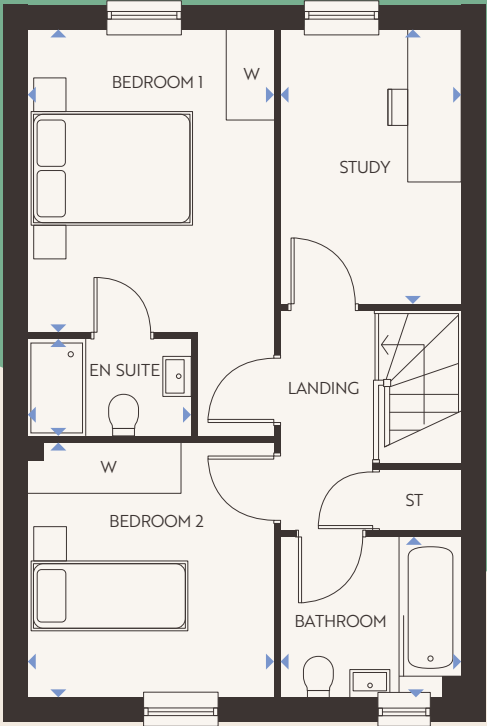
2 Bedroom Homes

HENLEY GATE PLOTS: 47, 48, 51 & 52 (AS), 49 & 53 (OPP)



Ground Floor

- KITCHEN/DINING**
3.83m x 3.58m | 2' 7" x 11' 9"
- LOUNGE**
4.66m x 4.39m | 15' 3" x 14' 5"
- UTILITY**
1.83m x 1.49m | 5' 12" x 4' 11"
- WC**
1.84m x 1.49m | 6' 0" x 4' 11"



First Floor

- BEDROOM 1**
3.79m x 3.10m | 12' 5" x 10' 2"
- EN-SUITE**
2.06m x 1.23m | 6' 9" x 4' 0"
- BEDROOM 2**
3.15m x 3.10m | 10' 4" x 10' 2"
- STUDY**
3.44m x 2.24m | 11' 3" x 7' 4"
- BATHROOM**
2.22m x 1.97m | 7' 3" x 6' 6"

KEY
B – Boiler | ST – Store | W – Wardrobe | WC – Cloakroom | WM – Washing Machine space | FF – Fridge/Freezer space | OV – Oven ◀▶ – Dimension Location

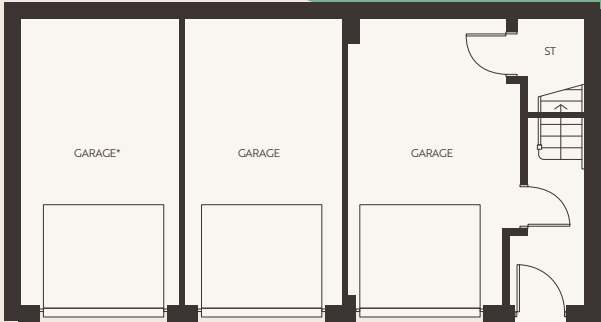
Floorplans shown are indicative only. The kitchen layout and furniture positions are for indicative purposes only. All dimensions indicated are approximate and should not be relied upon for carpet sizes or items of furniture. The developer reserves the right to make changes to these plans prior to exchange of contracts. For exact plot specification, details of external and internal finishes, dimensions and floorplan differences, please speak to a member of our Sales Team for more details.



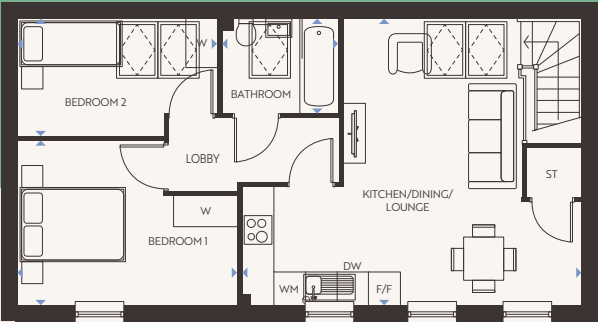
Wincham

2 Bedroom Homes

HENLEY GATE PLOTS: 43 (AS)



*Does not belong to flat above



Ground Floor

GARAGE
5.46 x 4.54 | 17' 11" x 14' 11"

First Floor

KITCHEN/DINING/LOUNGE
6.46m x 5.48m | 21' 2" x 17' 12"

BEDROOM 1
4.20m x 3.14m | 13' 9" x 10' 3"

BEDROOM 2
3.88m x 2.26m | 12' 9" x 7' 5"

KEY

ST – Store | W – Wardrobe | WC – Cloakroom | WM – Washing Machine space | FF – Fridge/Freezer space
◻ – Rooflights ◀▶ – Dimension Location

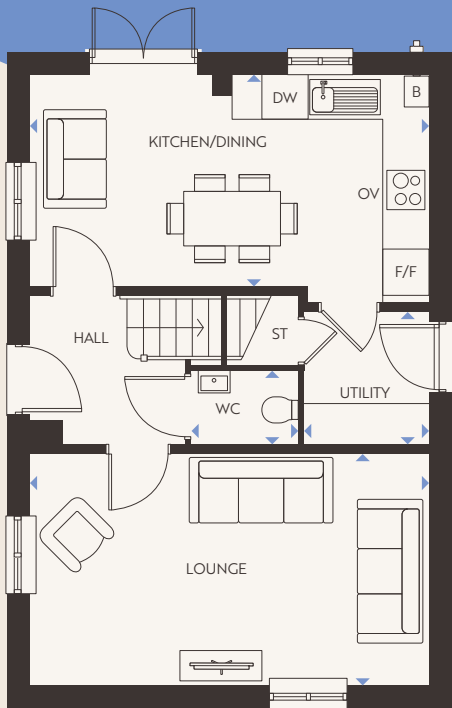
Floorplans shown are indicative only. The kitchen layout and furniture positions are for indicative purposes only. All dimensions indicated are approximate and should not be relied upon for carpet sizes or items of furniture. The developer reserves the right to make changes to these plans prior to exchange of contracts. For exact plot specification, details of external and internal finishes, dimensions and floorplan differences, please speak to a member of our Sales Team for more details.



Hadley

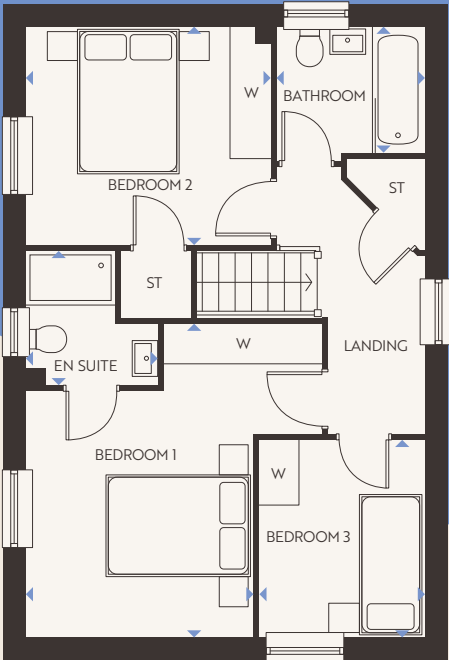
3 Bedroom Homes

HENLEY GATE PLOTS: (AF): 38, 71 & 81 (OPP): 57, 60, 65 & 66



Ground Floor

- KITCHEN/DINING**
5.51m x 2.97m | 18' 1" x 9' 9"
- UTILITY**
1.85m x 1.68m | 6' 1" x 5' 6"
- LOUNGE**
5.51m x 3.20m | 18' 1" x 10' 6"
- WC**
1.51m x 3.20m | 4' 11" x 3' 5"



First Floor

- BEDROOM 1**
3.14m x 4.30m | 10' 4" x 14' 1"
- EN-SUITE**
1.88m x 1.81m | 6' 2" x 5' 11"
- BEDROOM 2**
3.38m x 3.02m | 11' 1" x 9' 11"
- BEDROOM 3**
2.75m x 2.30m | 9' 0" x 7' 7"
- BATHROOM**
2.06m x 1.74m | 6' 9" x 5' 8"

KEY

B – Boiler | ST – Store | W – Wardrobe | WC – Cloakroom | WM – Washing Machine space | FF – Fridge/Freezer space | OV – Oven ◀▶ – Dimension Location

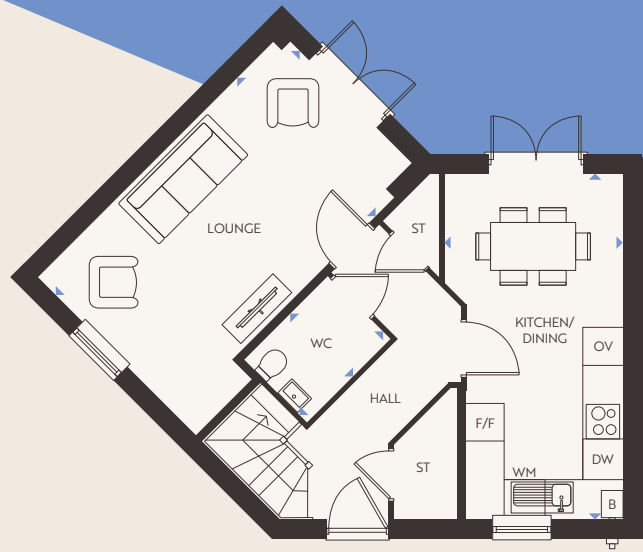
Floorplans shown are indicative only. The kitchen layout and furniture positions are for indicative purposes only. All dimensions indicated are approximate and should not be relied upon for carpet sizes or items of furniture. The developer reserves the right to make changes to these plans prior to exchange of contracts. For exact plot specification, details of external and internal finishes, dimensions and floorplan differences, please speak to a member of our Sales Team for more details.



Logan

3 Bedroom Homes

HENLEY GATE PLOTS: (AF): 40 (OPP): 39



Ground Floor

- KITCHEN/DINING**
5.44m x 2.50m | 17' 10" x 8' 2"
- LOUNGE**
5.44m x 3.54m | 17' 10" x 11' 7"
- WC**
2.02m x 1.40m | 6' 7" x 4' 7"

First Floor

- BEDROOM 1**
3.59m x 3.08m | 11' 9" x 10' 1"
- EN-SUITE**
2.29m x 1.25m | 7' 6" x 4' 1"
- BEDROOM 2**
4.81m x 2.70m | 15' 10" x 8' 10"
- STUDY**
2.89m x 2.67m | 9' 6" x 8' 9"

KEY
B – Boiler | ST – Store | W – Wardrobe | WC – Cloakroom | WM – Washing Machine space | FF – Fridge/Freezer space | OV – Oven ◀▶ – Dimension Location

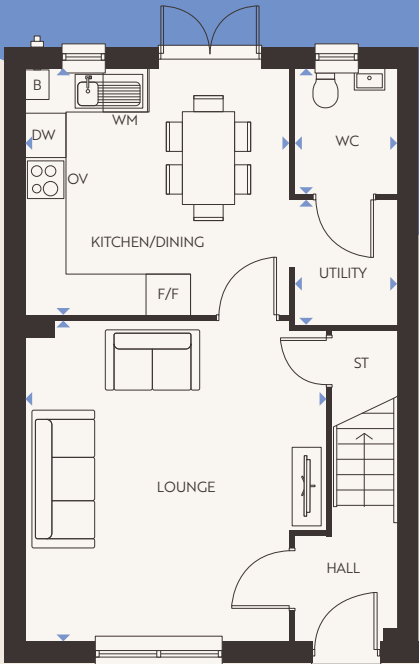
Floorplans shown are indicative only. The kitchen layout and furniture positions are for indicative purposes only. All dimensions indicated are approximate and should not be relied upon for carpet sizes or items of furniture. The developer reserves the right to make changes to these plans prior to exchange of contracts. For exact plot specification, details of external and internal finishes, dimensions and floorplan differences, please speak to a member of our Sales Team for more details.



Edwards

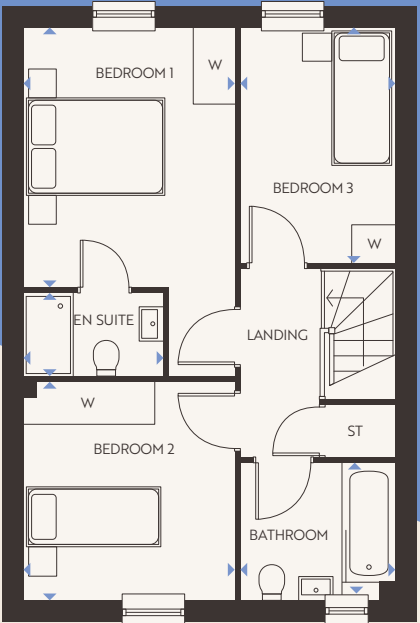
3 Bedroom Homes

HENLEY GATE PLOTS: 24, 27, 86, 110 & 130 (AS), 23, 25, 84, 109 & 129 (OPP)



Ground Floor

- KITCHEN/DINING**
3.83m x 3.58m | 12' 7" x 11' 9"
- UTILITY**
1.83m x 1.49m | 5' 12" x 4' 11"
- LOUNGE**
4.66m x 4.39m | 15' 3" x 14' 5"
- WC**
1.84m x 1.49m | 6' 0" x 4' 11"



First Floor

- BEDROOM 1**
3.79m x 3.10m | 12' 5" x 10' 2"
- EN-SUITE**
2.06m x 1.23m | 6' 9" x 4' 0"
- BEDROOM 2**
3.15m x 3.10m | 10' 4" x 10' 2"
- BEDROOM 3**
3.44m x 2.24m | 11' 3" x 7' 4"
- BATHROOM**
2.22m x 1.97m | 7' 3" x 6' 6"

KEY
B – Boiler | ST – Store | W – Wardrobe | WC – Cloakroom | WM – Washing Machine space | FF – Fridge/Freezer space | OV – Oven ◀▶ – Dimension Location

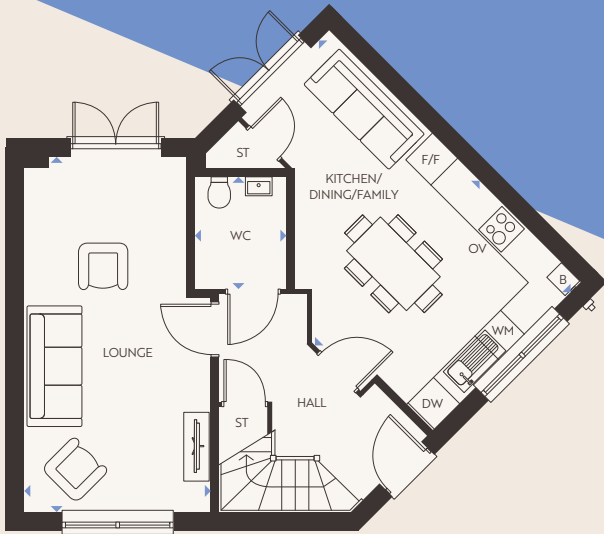
Floorplans shown are indicative only. The kitchen layout and furniture positions are for indicative purposes only. All dimensions indicated are approximate and should not be relied upon for carpet sizes or items of furniture. The developer reserves the right to make changes to these plans prior to exchange of contracts. For exact plot specification, details of external and internal finishes, dimensions and floorplan differences, please speak to a member of our Sales Team for more details.



Hobbister

3 Bedroom Homes

HENLEY GATE PLOTS: 68 & 78 (AS), 67 & 79 (OPP)



Ground Floor

- KITCHEN/DINING/FAMILY**
3.79m x 5.83m | 12' 5" x 19' 2"
- LOUNGE**
3.05m x 5.83m | 10' 0" x 19' 2"
- WC**
1.53m x 1.87m | 5' 0" x 6' 1"

First Floor

- BEDROOM 1**
3.09m x 3.86m | 10' 2" x 12' 8"
- EN-SUITE**
1.40m x 2.16m | 4' 7" x 7' 1"
- BEDROOM 2**
4.67m x 2.81m | 15' 4" x 9' 3"
- BEDROOM 3**
3.03m x 2.93m | 9' 11" x 9' 8"
- BATHROOM**
2.19m x 1.85m | 7' 2" x 6' 1"

KEY
B – Boiler | ST – Store | W – Wardrobe | WC – Cloakroom | WM – Washing Machine space | FF – Fridge/Freezer space | OV – Oven ◀▶ – Dimension Location

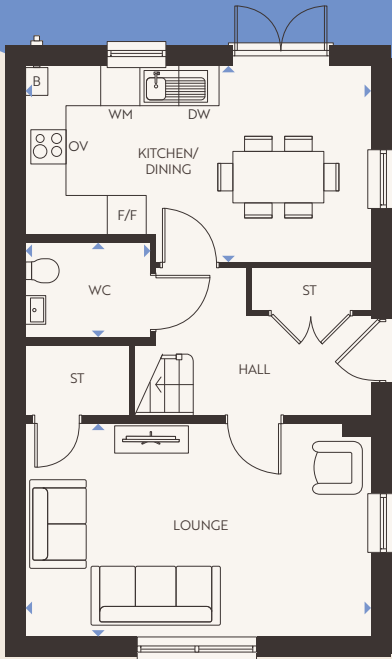
Floorplans shown are indicative only. The kitchen layout and furniture positions are for indicative purposes only. All dimensions indicated are approximate and should not be relied upon for carpet sizes or items of furniture. The developer reserves the right to make changes to these plans prior to exchange of contracts. For exact plot specification, details of external and internal finishes, dimensions and floorplan differences, please speak to a member of our Sales Team for more details.



Hopton

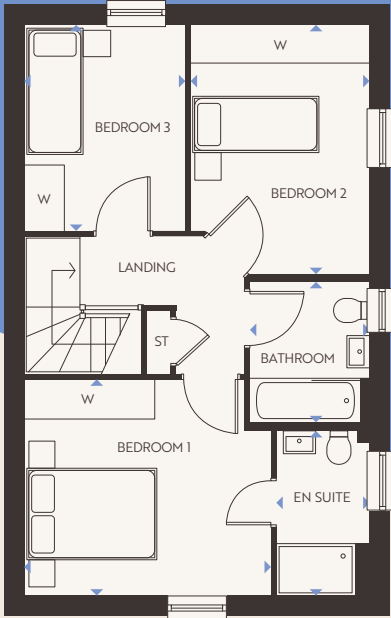
3 Bedroom Homes

HENLEY GATE PLOTS: 1, 14 & 35 (AS), 19 & 39 (OPP)



Ground Floor

- KITCHEN/DINING**
5.26m x 3.00m | 17' 3" x 9' 10"
- LOUNGE**
5.27m x 3.27m | 17' 3" x 10' 9"
- WC**
1.88m x 1.47m | 6' 2" x 4' 10"



First Floor

- BEDROOM 1**
3.77m x 3.31m | 12' 4" x 10' 10"
- EN-SUITE**
1.42m x 2.54m | 4' 8" x 8' 4"
- BEDROOM 2**
2.73m x 3.84m | 8' 12" x 12' 7"
- BEDROOM 3**
2.50m x 3.16m | 8' 2" x 10' 4"
- BATHROOM**
1.80m x 2.17m | 5' 11" x 7' 1"

KEY

B – Boiler | ST – Store | W – Wardrobe | WC – Cloakroom | WM – Washing Machine space | FF – Fridge/Freezer space | OV – Oven ◀▶ – Dimension Location

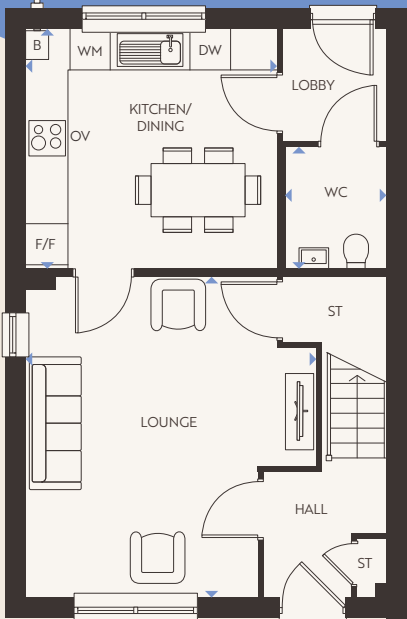
Floorplans shown are indicative only. The kitchen layout and furniture positions are for indicative purposes only. All dimensions indicated are approximate and should not be relied upon for carpet sizes or items of furniture. The developer reserves the right to make changes to these plans prior to exchange of contracts. For exact plot specification, details of external and internal finishes, dimensions and floorplan differences, please speak to a member of our Sales Team for more details.



Mildenhall

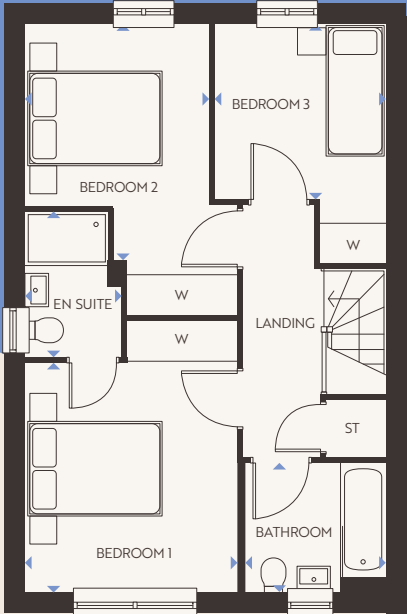
3 Bedroom Homes

HENLEY GATE PLOTS: 3, 5, 17, 21, 25, 29, 80, 86 & 91 (AS), 2, 4, 16, 22, 26, 30, 81, 87 & 92 (OPP)



Ground Floor

- KITCHEN/DINING**
3.55m x 3.72m | 11' 8" x 12' 2"
- LOUNGE**
4.75m x 4.31m | 15' 7" x 14' 2"
- WC**
1.80m x 1.52m | 5' 11" x 4' 12"



First Floor

- BEDROOM 1**
3.39m x 3.13m | 11' 2" x 10' 3"
- EN-SUITE**
2.16m x 1.42m | 7' 1" x 4' 8"
- BEDROOM 2**
3.50m x 2.71m | 11' 6" x 8' 11"
- BEDROOM 3**
2.59m x 2.59m | 8' 6" x 8' 6"
- BATHROOM**
1.89m x 2.13m | 6' 2" x 7' 0"

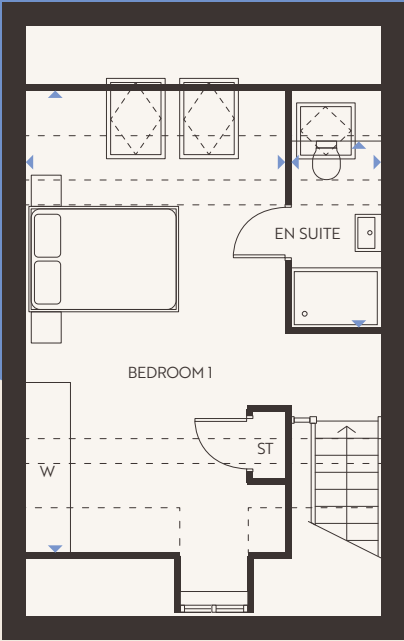
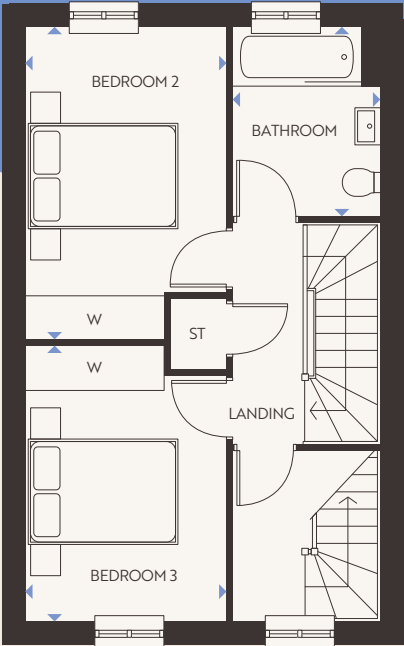
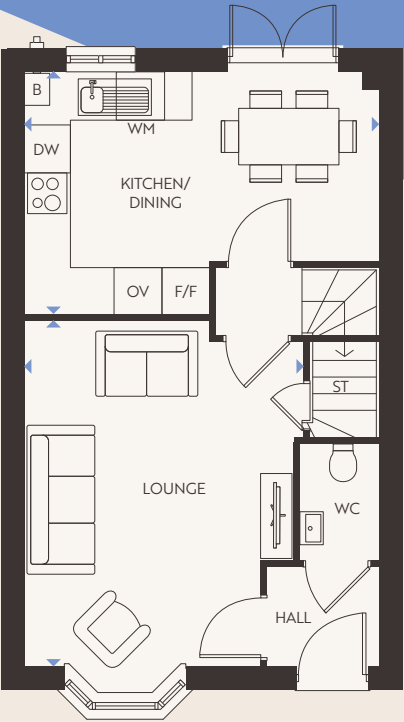
KEY
B – Boiler | ST – Store | W – Wardrobe | WC – Cloakroom | WM – Washing Machine space | FF – Fridge/Freezer space
◀▶ – Dimension Location

Floorplans shown are indicative only. The kitchen layout and furniture positions are for indicative purposes only. All dimensions indicated are approximate and should not be relied upon for carpet sizes or items of furniture. The developer reserves the right to make changes to these plans prior to exchange of contracts. For exact plot specification, details of external and internal finishes, dimensions and floorplan differences, please speak to a member of our Sales Team for more details.



3 Bedroom Homes

Henley Gate PLOTS: 342, 343, 348, 349, 375, 376, 391, 392



Ground Floor

KITCHEN/DINING
4.78m x 3.23m | 15' 8" x 10' 7"

LOUNGE
4.64m x 3.77 | 15' 3" x 12' 4"

WC
1.59m x 1.09m | 5' 2" x 3' 7"

First Floor

BEDROOM 2
4.18m x 2.70m | 13' 8" x 8' 10"

BEDROOM 3
3.69m x 2.70m | 12' 1" x 8' 10"

BATHROOM
2.53m x 2.02m | 8' 4" x 6' 8"

Second Floor

BEDROOM 1
6.19m x 3.49m | 20' 4" x 11' 5"

EN-SUITE
3.19m x 1.23m | 10' 6" x 4' 0"

KEY

B – Boiler | ST – Store | W – Wardrobe | WC – Cloakroom | WM – Washing Machine space | FF – Fridge/Freezer space

◀▶ – Dimension Location

Floorplans shown are indicative only. The kitchen layout and furniture positions are for indicative purposes only. All dimensions indicated are approximate and should not be relied upon for carpet sizes or items of furniture. The developer reserves the right to make changes to these plans prior to exchange of contracts. For exact plot specification, details of external and internal finishes, dimensions and floorplan differences, please speak to a member of our Sales Team for more details.

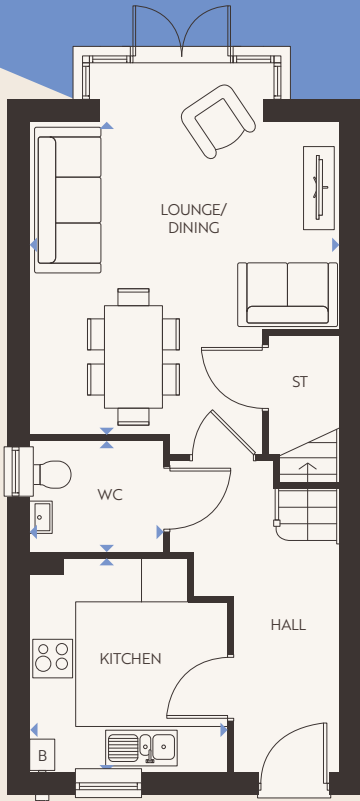
Kennett



Blean

3 Bedroom Homes

HENLEY GATE PLOTS: 342, 343, 348, 349, 375, 376, 391, 392

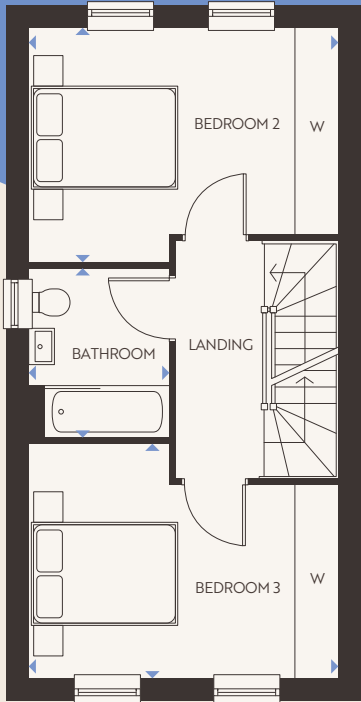


Ground Floor

LOUNGE/DINING
4.22m x 4.25m | 13' 10" x 13' 11"

KITCHEN
2.67m x 2.89m | 8' 9" x 9' 6"

WC
1.80m x 1.48m | 5' 11" x 4' 10"

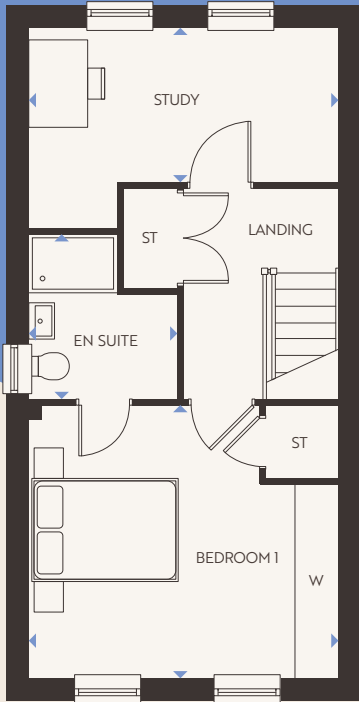


First Floor

BEDROOM 2
4.22m x 3.18m | 13' 10" x 10' 5"

BEDROOM 3
4.22m x 3.17m | 13' 10" x 10' 5"

BATHROOM
1.89m x 2.29m | 6' 2" x 7' 6"



Second Floor

BEDROOM 1
4.22m x 3.70m | 13' 10" x 12' 2"

EN-SUITE
2.02m x 2.25m | 6' 7" x 7' 5"

STUDY
4.22m x 2.10m | 13' 10" x 6' 11"

KEY

B – Boiler | ST – Store | W – Wardrobe | WC – Cloakroom | WM – Washing Machine space | FF – Fridge/Freezer space
◀▶ – Dimension Location

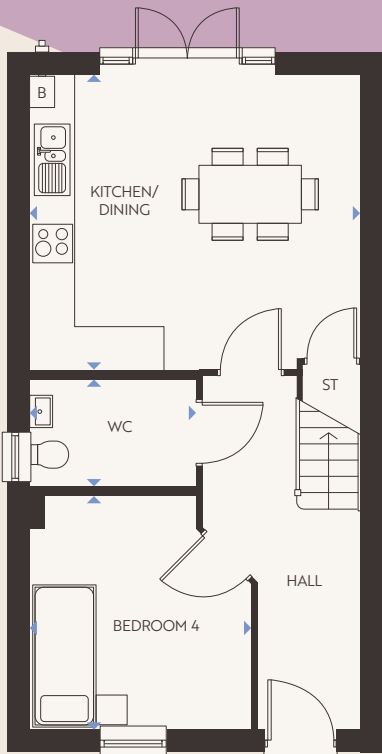
Floorplans shown are indicative only. The kitchen layout and furniture positions are for indicative purposes only. All dimensions indicated are approximate and should not be relied upon for carpet sizes or items of furniture. The developer reserves the right to make changes to these plans prior to exchange of contracts. For exact plot specification, details of external and internal finishes, dimensions and floorplan differences, please speak to a member of our Sales Team for more details.



Lakenheath

4 Bedroom Homes

Henley Gate PLOTS: 71, 82, & 88 (AS), 70, 83 & 90 (OPP)

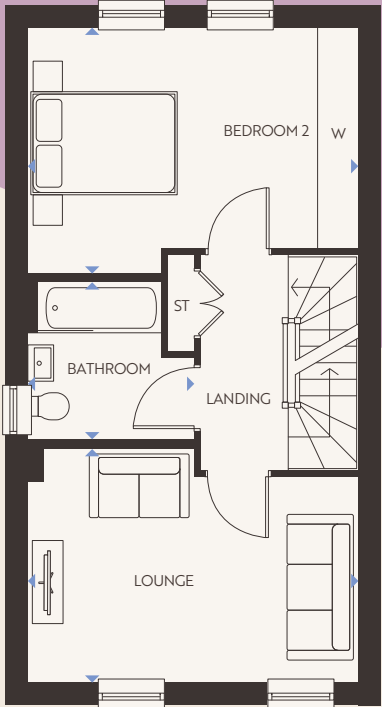


Ground Floor

KITCHEN/DINING
4.51m x 4.04m | 14' 10" x 13' 3"

BEDROOM 4
3.03m x 3.18m | 9' 11" x 10' 5"

WC
2.26m x 1.48m | 7' 5" x 4' 10"

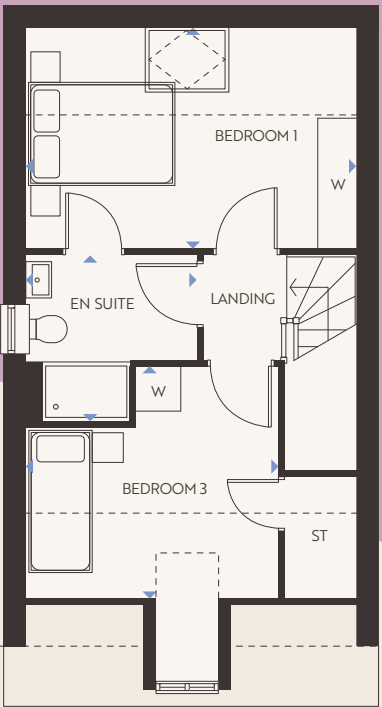


First Floor

LOUNGE
4.56m x 3.21m | 14' 11" x 10' 6"

BEDROOM 2
4.56m x 3.56m | 14' 11" x 11' 8"

BATHROOM
2.24m x 2.15m | 7' 4" x 7' 0"



Second Floor

BEDROOM 1
4.56m x 3.02m | 14' 11" x 9' 11"

BEDROOM 3
3.43m x 3.17m | 11' 3" x 10' 5"

EN-SUITE
2.32m x 2.26m | 7' 7" x 7' 5"

KEY

B – Boiler | ST – Store | W – Wardrobe | WC – Cloakroom | WM – Washing Machine space | FF – Fridge/Freezer space

◀▶ – Dimension Location

Floorplans shown are indicative only. The kitchen layout and furniture positions are for indicative purposes only. All dimensions indicated are approximate and should not be relied upon for carpet sizes or items of furniture. The developer reserves the right to make changes to these plans prior to exchange of contracts. For exact plot specification, details of external and internal finishes, dimensions and floorplan differences, please speak to a member of our Sales Team for more details.

UNPARALLELEDLIVING.UK

UNPARALLELED
LIVING

— AT —

H C

HENLEY GATE

View our
available
rental homes

