

UNPARALLELED
LIVING

— AT —

NP

NOBEL PARK

Rental homes managed by

allsop

UNPARALLELEDLIVING.UK

View our
available
rental homes





Our brand-new 2 and 3 bedroom homes located in Didcot, combine comfort, style, and convenience.

Experience hassle-free living and unparalleled support – a reflection of our commitment to exceeding expectations.

Features like our residents’ app, zero deposit scheme, and 24/7 support set us apart from other homes.



24/7 SUPPORT

Help is always available, day or night



PROFESSIONAL MANAGEMENT

By trusted and experienced professionals



RESIDENTS’ APP

Manage your home and maintenance from your phone



ZERO DEPOSIT

Moving made easier without upfront costs*



PET FRIENDLY

Our homes are for all the family, even the furry ones



FLEXIBLE RENTAL TERMS

Choose a rental plan that suits you and your lifestyle

*New build homes save you money on energy bills in comparison to a secondhand home. HBF Watt a Save report, 2025.
*0% deposit – Terms and conditions apply, available on selected plots only. Please speak to a Sales Executive for further details.



DESIGNED
FOR YOU

High-quality,
contemporary
living spaces

Specifications

Our homes are built with renters in mind, giving you a hassle-free, move-in-ready experience with high-quality appliances, flooring and finishes, all unfurnished so you can make it your own.



MODERN KITCHENS



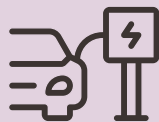
ULTRAFAST BROADBAND



DUAL ZONE HEATING*



SOLAR PANELS TO SOUTH-FACING ROOFS*



EV CHARGER ENABLED*



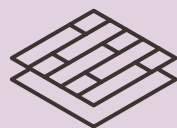
PRIVATE GARDENS



INTEGRATED WHITE GOODS



SOFT CLOSE HINGES



LUXURY VINYL PLANK FLOORING



SMART LOCK





UNPARALLELED LIVING AT NOBEL PARK

Discover Didcot

A Hub of Opportunity

Didcot blends welcoming, small town charm with modern convenience. Its bustling town centre, open green spaces and a thriving arts and culture scene, there's always something to explore and enjoy. The town's continued investment in development ensures a high-quality way of life, with fantastic shopping, leisure and dining at your fingertips.



WITTENHAM CLUMPS



OXFORD MARKETS



A Town on the Rise

A flourishing town with a bright future, Didcot is known for its strong sense of community, great transport links and growing amenities. As an integral part of the Oxford Science Vale, it's at the heart of innovation and progress, making it an exciting place to live, work and thrive.



Building Your Future in Didcot

Become part of Didcot's exciting journey by renting a home at Nobel Park. Whether it's the town's exceptional connectivity—just a short train ride from Oxford or London—or the strong sense of community that draws you in, Didcot offers the perfect balance of modern living and local charm.

Once rooted in its proud railway heritage, Didcot has grown into a thriving, forward-thinking town. And just like the town itself, your story here will be one of possibility and progress.

Step into a vibrant community where opportunity is always within reach.

Effortless Connections



Didcot offers excellent travel links, making it easy to reach popular locations both within the region and beyond. Whether you prefer to travel by train, road, bus, or bike, Didcot provides a variety of convenient options – with scenic cycle routes and local paths right on your doorstep.



By Road

Didcot is well connected by a network of roads linking you to two major cities and more, ensuring smooth travel to various destinations:

A4130 Wallingford in 12 minutes

A34 Oxford in 30 minutes

M4 London in 110 minutes



By Bus

Direct X32 bus to Oxford from Didcot Parkway, with the X3 also on your doorstep for easy city access

DIDCOT PARKWAY - X32 BUS
33 minute journey

ST ALDATES
4 minute walk to Oxford High street

TOTAL TRAVEL TIME: 37 minutes

X36 A regular bus service that runs right from Nobel Park taking you to Wantage, Milton Science & Technology Park and Didcot Parkway.



By Bike

There is a range of cycle paths in and around Nobel Park connecting you to route 5 of the National Cycle Network. You'll have access directly to Didcot town and Didcot Parkway station to enjoy by bike.



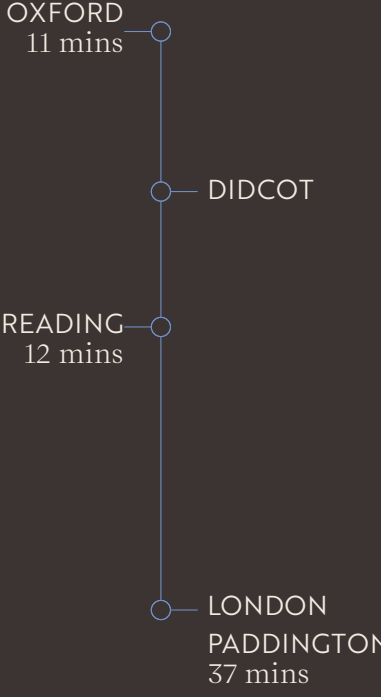
By Train

As a major rail hub, Didcot railway station provides frequent and reliable services to several key destinations:

LONDON PADDINGTON
Direct trains take approximately 37 minutes, making it quick and convenient for business or leisure trips.

OXFORD
A direct, 1 stop service to Oxford takes only 11 minutes, ideal for accessing the historic city with shopping and more.

READING
Regular services to Reading are available with a short journey time of 12 minutes.



Local amenities

NOBEL PARK

ENTERTAINMENT / LEISURE

- 01. Franklin Playground
1.1 miles / 3 min drive*
- 02. Fitness & Wellbeing Hub
2.1 miles / 7 min drive*
- 03. Ladygrove Estate Pond
1.2 miles / 3 min drive*
- 04. Willowbrook Leisure Centre
1.8 miles / 5 min drive*
- 05. Didcot Town FC Club
1.9 miles / 5 min drive*
- 06. Ladygrove Community Centre
1.4 miles / 4 min drive*
- 07. Cornerstone Arts Centre
1.8 miles / 6 min drive*
- 08. PureGym Didcot
1.6 miles / 5 min drive*
- 09. Fleet Meadow Community Hall
1.5 miles / 4 min drive*
- 10. Hadden Hill Golf Club
2.1 miles / 5 min drive*
- 11. Pendon Museum
2.5 miles / 6 min drive*

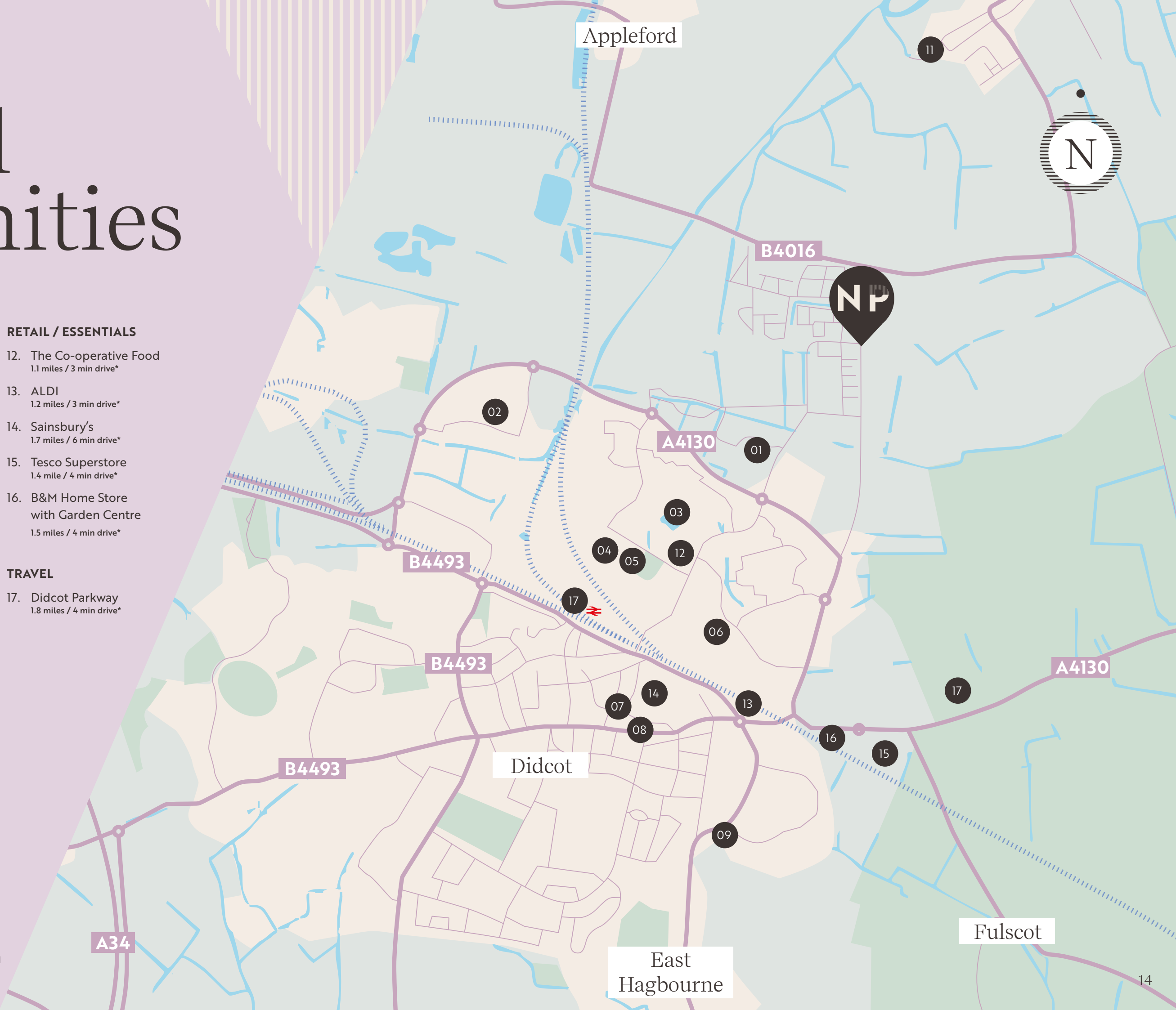
RETAIL / ESSENTIALS

- 12. The Co-operative Food
1.1 miles / 3 min drive*
- 13. ALDI
1.2 miles / 3 min drive*
- 14. Sainsbury's
1.7 miles / 6 min drive*
- 15. Tesco Superstore
1.4 mile / 4 min drive*
- 16. B&M Home Store with Garden Centre
1.5 miles / 4 min drive*

TRAVEL

- 17. Didcot Parkway
1.8 miles / 4 min drive*

*Distances and times from Nobel Park (OX11 9GG) to amenity. Taken from Google Maps.









Local Schools

For families, Didcot offers a diverse array of high-quality educational institutions, ensuring that children have access to excellent schooling options from primary to college.

Here's a quick look at some notable schools in the area.



-  Pre-Schools and Nurseries
-  Primary Schools
-  Secondary Schools
-  Higher Education

*Miles from Nobel Park. Distances taken from Google Maps.

Nobel Park

Siteplan

2 Bedroom homes

- RUGBY**
Plots: 460–463, 542–546, 564, 565, 579–581 & 608–610
- LANGLEY**
Plots: 479–484, 489, 490, 493, 494 & 516–521
- WADDESDON**
Plot: 607
- MARYLAND 2**
Plots: 464–472
- MARYLAND 3**
Plots: 523–528
- DRAYTON**
Plots: 487, 491, 496, 583, 584, 585, 587 & 590–592
- FARRINGDON**
Plots: 488, 492 & 522
- KINGHAM**
Plots: 478, 534, 536, 544, 566, 611, 613, 620, 624 & 626
- LINGFIELD**
Plots: 473, 474 & 567–576
- PANGBOURNE**
Plots: 475, 476, 535, 537, 538, 539, 540, 541, 563, 577, 578 & 589

3 Bedroom homes

- ASHFORD**
Plots: 485 & 486
- CHADWELL**
Plots: 495, 497 & 586
- WYCOMBE**
Plots: 477, 547, 548, 549, 550, 551, 582, 612, 619 & 625

The development layout does not show details of gradients of land, boundary treatments, local authority street lighting or landscaping. It is our intention to build in accordance with this layout. However, there may be occasions when the house designs, boundaries, landscaping and positions of roads and footpaths change as the development proceeds. Please speak to a member of our Sales Team for more details.





Your Route Home

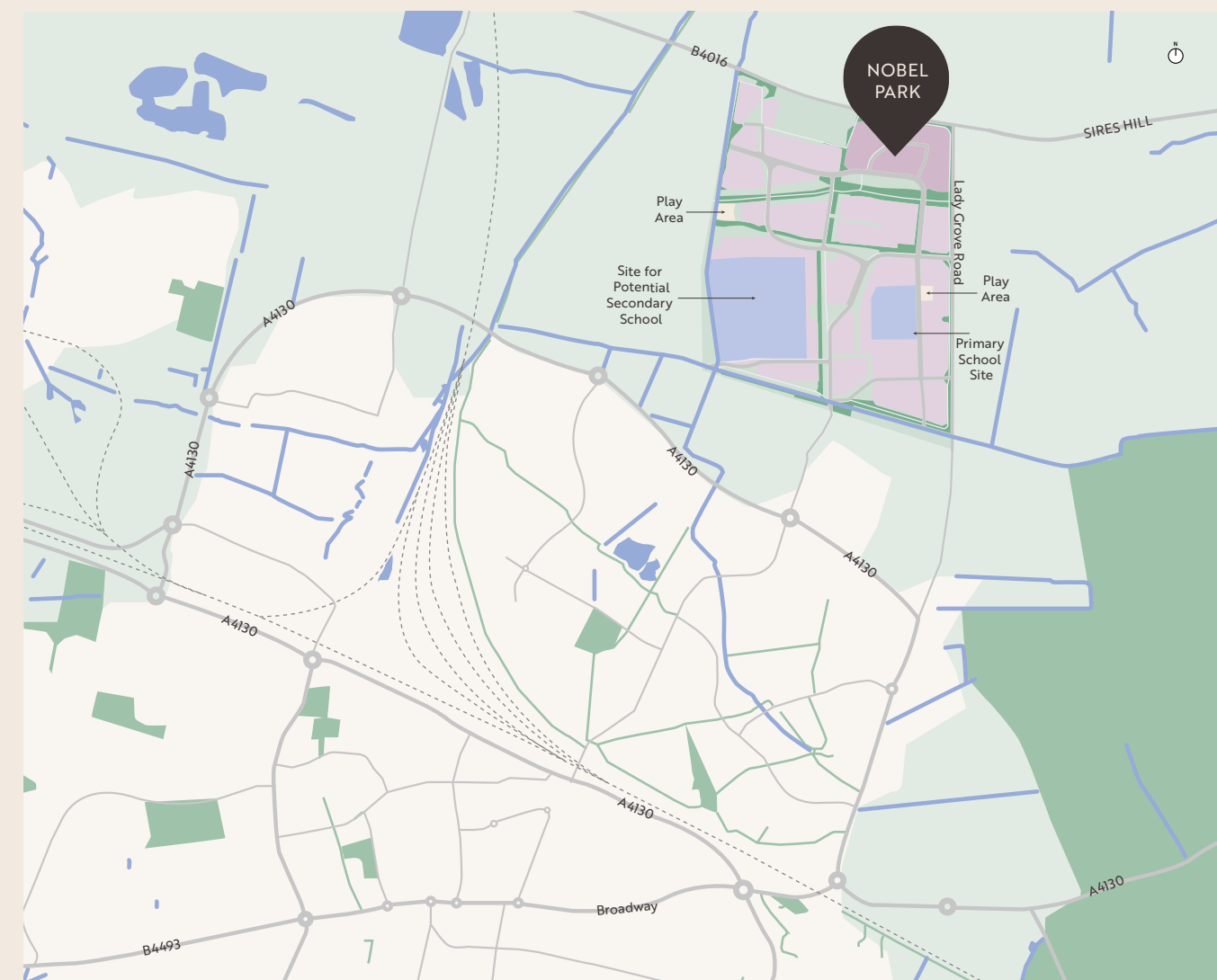


FROM THE NORTH

Join the M40, following signs toward Oxford. Continue on the M40 and head towards the A34 junction. Take the A34 exit for Didcot and Newbury, and after about 10 miles, pass a few roundabouts while staying on the A34. Exit at the A4130 toward Didcot and continue for several miles, passing the outskirts of Didcot. As you approach the town, turn right onto Sires Hill, and then take the left onto Ladygrove Road. Follow this road to your new home.

FROM THE SOUTH

Join the M4, following signs toward Reading. Continue on the M4 and take the exit onto the A34 northbound, heading toward Didcot and Oxford. Stay on the A34 for about 15-20 miles, then exit at the A4130 toward Didcot and continue for several miles, passing the outskirts of Didcot. As you approach the town, turn right onto Sires Hill, and then take the left onto Ladygrove Road. Follow this road to your new home.



Unparalleled Experience of Modern Rental Living





Maryland A

2 Bedroom Apartments

NOBEL PARK PLOTS: 464-472



Ground Floor

LIVING/DINING

4.99M x 3.29M | 16'4" x 10'10"

KITCHEN

4.16M x 3.07M | 13'8" x 10'1"

WC

2.09M x 1.43M | 6'10" x 4'8"

BEDROOM 1

4.43M x 2.88M | 14'7" x 9'5"

BEDROOM 2

4.43M x 2.70M | 14'7" x 8'10"

BATHROOM

2.09M x 1.43M | 6'10" x 4'8"

KEY

B – Boiler | ST – Store | W – Wardrobe | WC – Cloakroom | WM – Washing Machine |
FF – Fridge/Freezer | ◀ ▶ – Dimension Location

Floorplans shown are indicative only. The kitchen layout and furniture positions are for indicative purposes only. All dimensions indicated are approximate and should not be relied upon for carpet sizes or items of furniture. The developer reserves the right to make changes to these plans prior to exchange of contracts. For exact plot specification, details of external and internal finishes, dimensions and floorplan differences, please speak to a member of our Sales Team for more details.



Maryland B

2 Bedroom Apartments

NOBEL PARK PLOTS: 523-528



Ground Floor

LIVING/DINING

4.99M x 3.29M | 16'4" x 10'10"

KITCHEN

4.16M x 3.07M | 13'8" x 10'1"

WC

2.20M x 1.93M | 7'3" x 6'4"

BEDROOM 1

4.43M x 2.88M | 14'7" x 9'5"

BEDROOM 2

4.43M x 2.70M | 14'7" x 8'10"

BATHROOM

2.09M x 1.43M | 6'10" x 4'8"

KEY

B – Boiler | ST – Store | W – Wardrobe | WC – Cloakroom | WM – Washing Machine |
FF – Fridge/Freezer | ◀ ▶ – Dimension Location

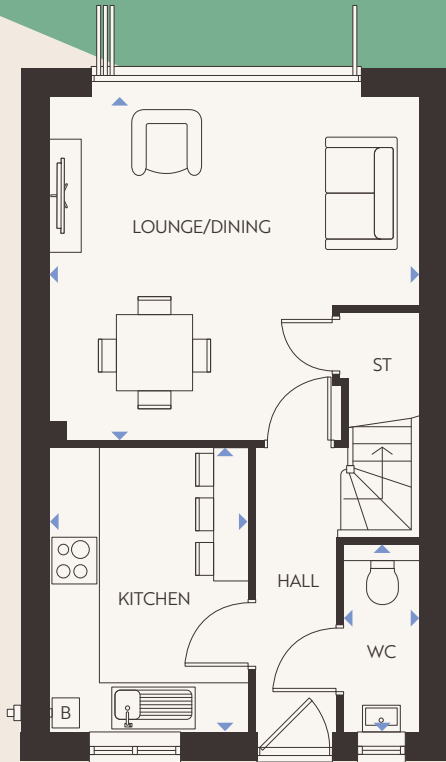
Floorplans shown are indicative only. The kitchen layout and furniture positions are for indicative purposes only. All dimensions indicated are approximate and should not be relied upon for carpet sizes or items of furniture. The developer reserves the right to make changes to these plans prior to exchange of contracts. For exact plot specification, details of external and internal finishes, dimensions and floorplan differences, please speak to a member of our Sales Team for more details.



Langley

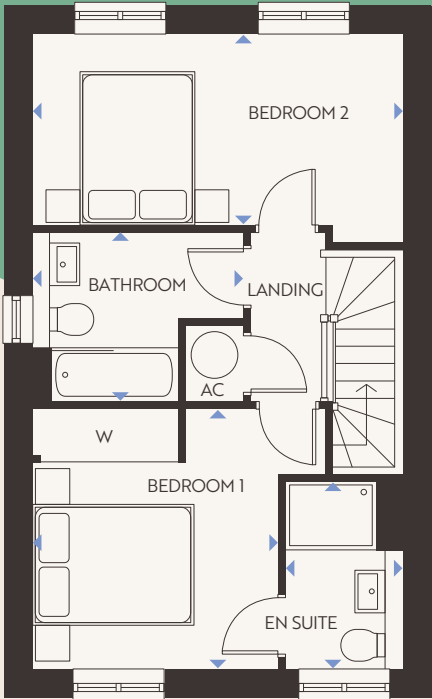
2 Bedroom Homes

NOBEL PARK PLOTS: 479-484, 489, 490, 493, 494 & 516-521



Ground Floor

- LIVING/DINING**
4.91M x 4.56M | 16'1" x 14'11"
- KITCHEN**
3.80M x 2.65M | 12'6" x 8'8"
- WC**
2.52M x 1.03M | 8'3" x 3'5"



First Floor

- BEDROOM 1**
3.48M x 3.27M | 11'5" x 10'9"
- EN-SUITE**
2.52M x 1.58M | 8'3" x 5'2"
- BEDROOM 2**
4.91M x 2.57M | 16'1" x 8'5"
- BATHROOM**
2.82M x 2.25M | 9'3" x 7'5"

KEY
B – Boiler | ST – Store | W – Wardrobe | WC – Cloakroom | WM – Washing Machine |
FF – Fridge/Freezer | ◀ ▶ – Dimension Location

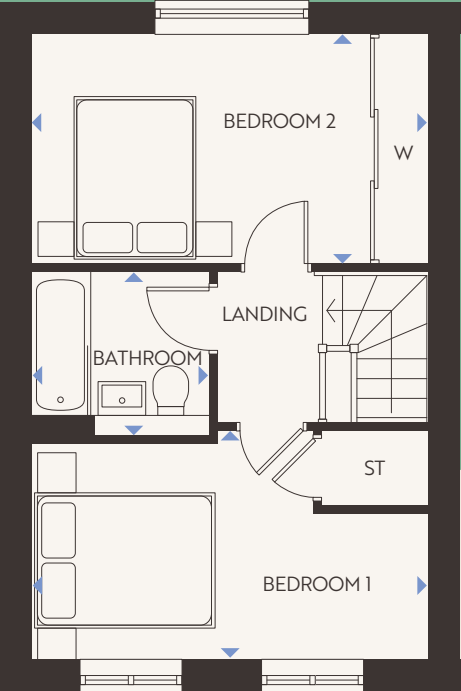
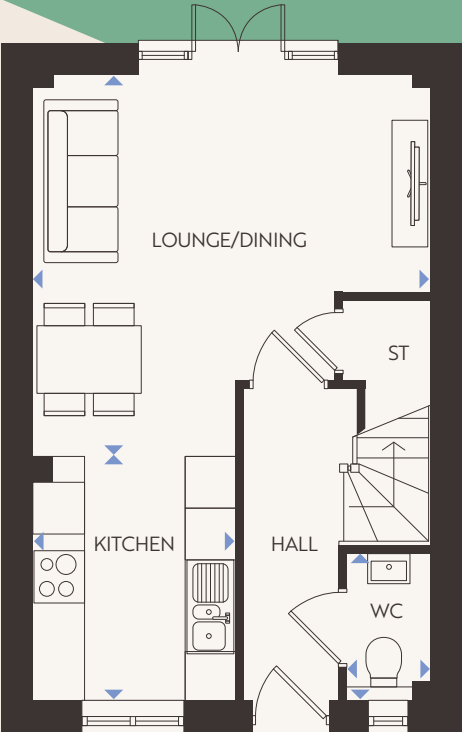
Floorplans shown are indicative only. The kitchen layout and furniture positions are for indicative purposes only. All dimensions indicated are approximate and should not be relied upon for carpet sizes or items of furniture. The developer reserves the right to make changes to these plans prior to exchange of contracts. For exact plot specification, details of external and internal finishes, dimensions and floorplan differences, please speak to a member of our Sales Team for more details.



Rugby

2 Bedroom Homes

NOBEL PARK PLOTS: 460–463, 542–546, 564, 565, 579–581 & 608–610



Ground Floor

- LIVING/DINING**
4.75M x 3.61M | 15' 7" x 11' 10"
- KITCHEN**
3.78M x 2.37M | 12' 5" x 7' 9"
- WC**
1.85M x 1.00M | 6' 1" x 3' 3"

First Floor

- BEDROOM 1**
4.75M x 2.61M | 15' 7" x 8' 7"
- BEDROOM 2**
4.75M x 2.61M | 15' 7" x 8' 7"
- BATHROOM**
2.18M x 1.97M | 7' 2" x 6' 5"

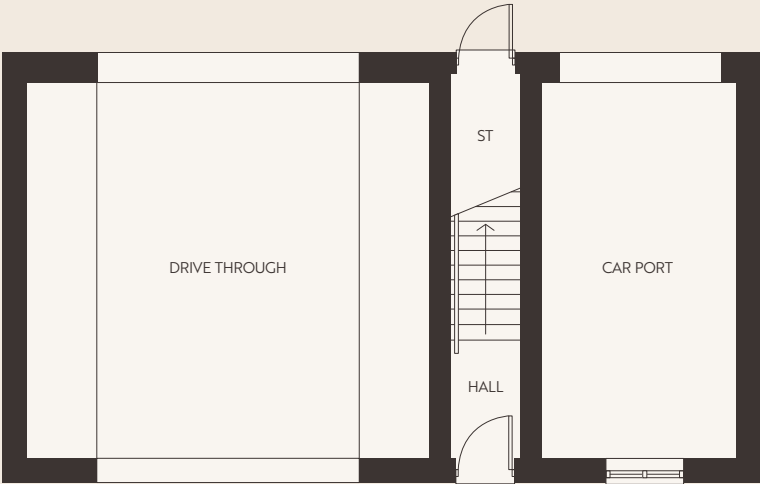
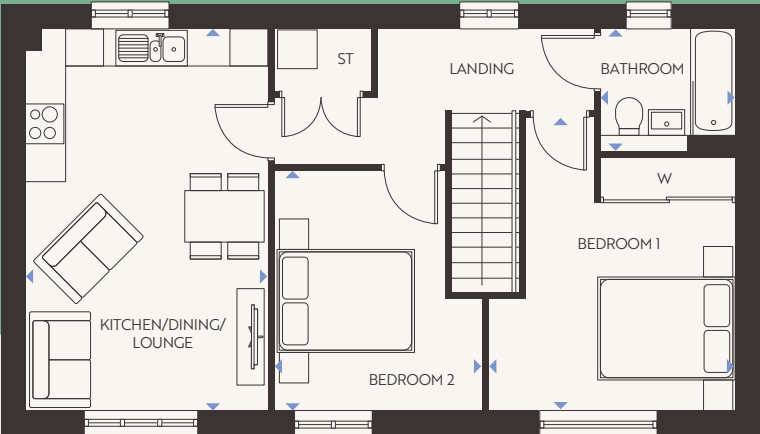
KEY
B – Boiler | ST – Store | W – Wardrobe | WC – Cloakroom | WM – Washing Machine |
FF – Fridge/Freezer | ◀▶ – Dimension Location

Floorplans shown are indicative only. The kitchen layout and furniture positions are for indicative purposes only. All dimensions indicated are approximate and should not be relied upon for carpet sizes or items of furniture. The developer reserves the right to make changes to these plans prior to exchange of contracts. For exact plot specification, details of external and internal finishes, dimensions and floorplan differences, please speak to a member of our Sales Team for more details.



2 Bedroom Homes

NOBEL PARK PLOT: 607



First Floor

LIVING/DINING
3.77M x 2.45M | 12'4" x 8'0"

KITCHEN
3.77M x 3.48M | 12'4" x 11'5"

BATHROOM
2.10M x 1.91M | 6'11" x 6'3"

BEDROOM 1
3.99M x 3.25M | 13'1" x 10'8"

BEDROOM 2
3.73M x 2.69M | 12'3" x 8'10"

KEY

B – Boiler | ST – Store | W – Wardrobe | WC – Cloakroom | WM – Washing Machine |
FF – Fridge/Freezer | ◀▶ – Dimension Location

Floorplans shown are indicative only. The kitchen layout and furniture positions are for indicative purposes only. All dimensions indicated are approximate and should not be relied upon for carpet sizes or items of furniture. The developer reserves the right to make changes to these plans prior to exchange of contracts. For exact plot specification, details of external and internal finishes, dimensions and floorplan differences, please speak to a member of our Sales Team for more details.

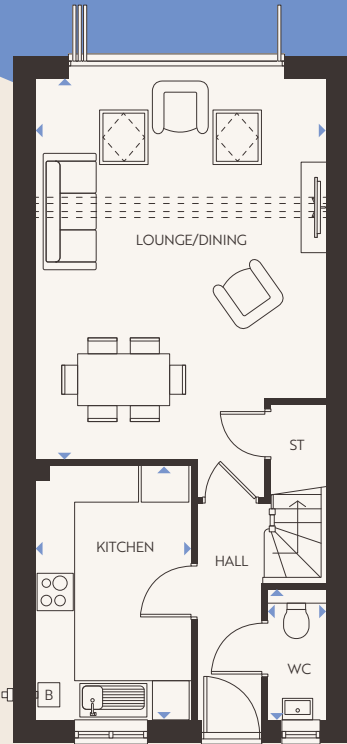
Waddesdon



Ashford

3 Bedroom Homes

NOBEL PARK PLOTS: 485 & 486

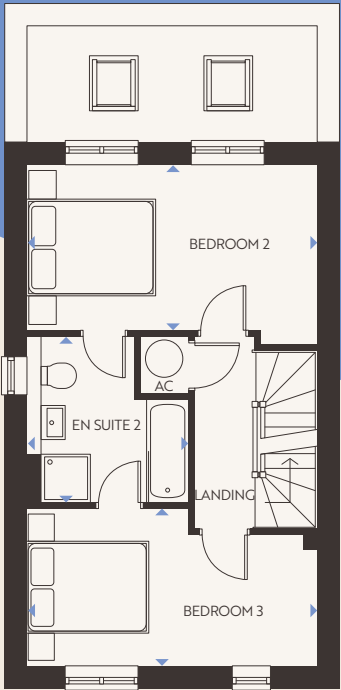


Ground Floor

LIVING/DINING
6.29M x 4.86M | 20'8" x 15'11"

KITCHEN
4.25M x 2.62M | 13'11" x 8'7"

WC
2.20M x 1.01M | 7'3" x 3'4"

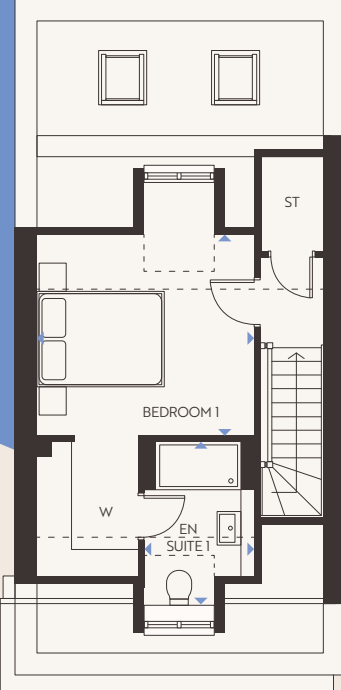


First Floor

BEDROOM 2
4.86M x 2.78M | 15'11" x 9'2"

BEDROOM 3
4.86M x 2.64M | 15'11" x 8'8"

EN SUITE
2.77M x 2.74M | 9'1" x 8'12"



Second Floor

BEDROOM 1
3.66M x 3.39M | 12'0" x 11'1"

EN SUITE
3.16M x 1.84M | 10'4" x 6'1"

KEY

B – Boiler | ST – Store | W – Wardrobe | WC – Cloakroom | WM – Washing Machine |
FF – Fridge/Freezer | ◀▶ – Dimension Location

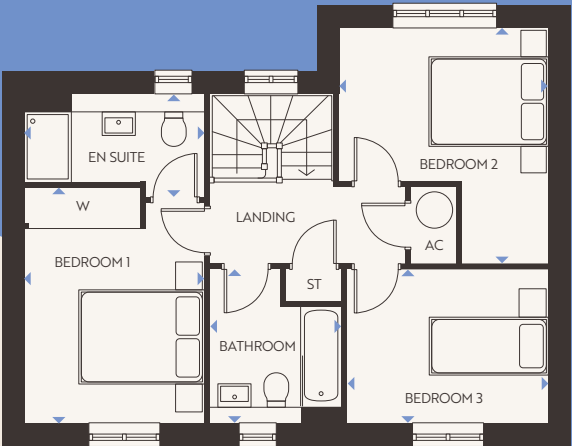
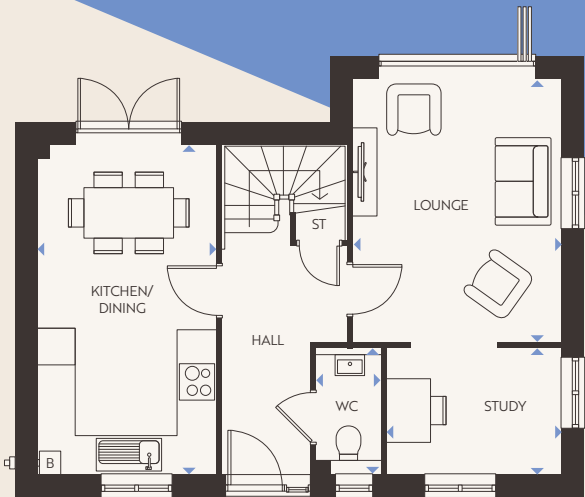
Floorplans shown are indicative only. The kitchen layout and furniture positions are for indicative purposes only. All dimensions indicated are approximate and should not be relied upon for carpet sizes or items of furniture. The developer reserves the right to make changes to these plans prior to exchange of contracts. For exact plot specification, details of external and internal finishes, dimensions and floorplan differences, please speak to a member of our Sales Team for more details.



Chadwell

3 Bedroom Homes

NOBEL PARK PLOTS: 495, 497 & 586



Ground Floor

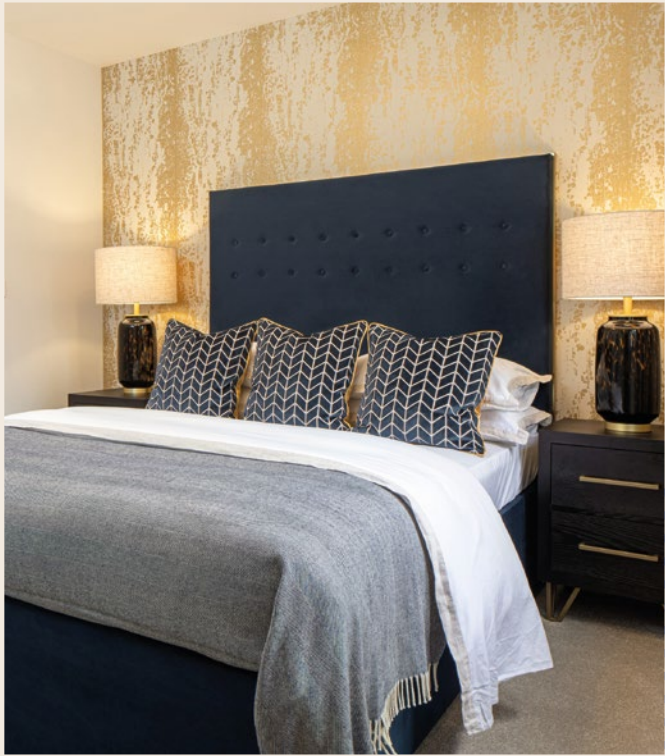
- KITCHEN / DINING**
5.63M x 3.09M | 18'6" x 10'1"
- LIVING**
4.51M x 3.58M | 14'10" x 11'9"
- WC**
2.15M x 1.1M | 7'1" x 3'8"
- STUDY**
3.00M x 2.15M | 9'10" x 7'1"

First Floor

- BEDROOM 1**
4.00M x 3.11M | 13'1" x 10'3"
- EN SUITE**
3.11M x 1.55M | 10'3" x 5'1"
- BEDROOM 2**
4.02M x 3.58M | 13'2" x 11'9"
- BEDROOM 3**
3.48M x 2.67M | 11'5" x 8'9"
- BATHROOM**
2.67M x 2.22M | 8'9" x 7'3"

KEY
B – Boiler | ST – Store | W – Wardrobe | WC – Cloakroom | WM – Washing Machine |
FF – Fridge/Freezer | ◆ – Dimension Location

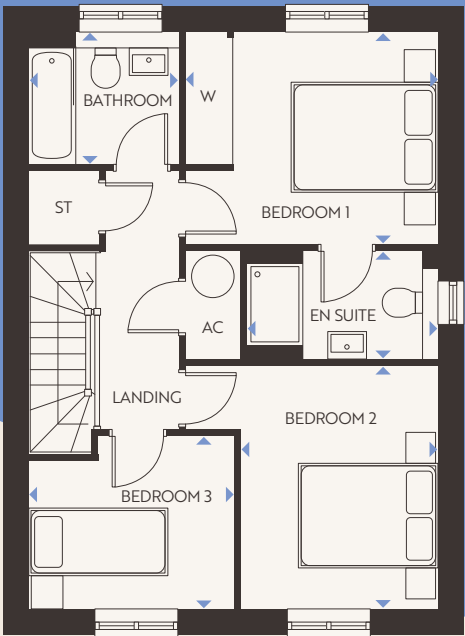
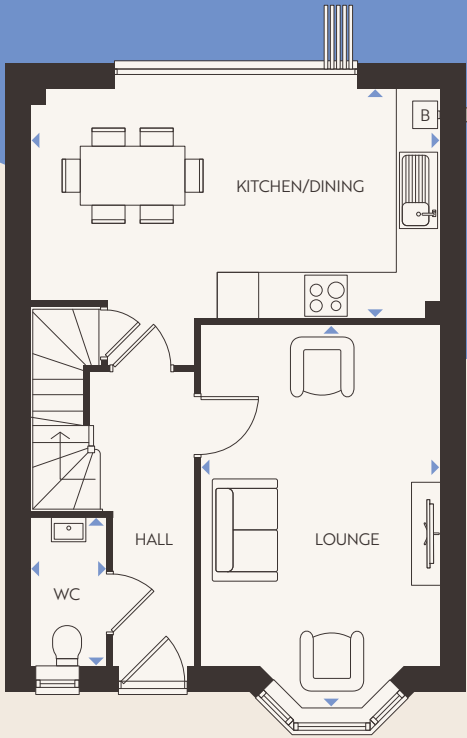
Floorplans shown are indicative only. The kitchen layout and furniture positions are for indicative purposes only. All dimensions indicated are approximate and should not be relied upon for carpet sizes or items of furniture. The developer reserves the right to make changes to these plans prior to exchange of contracts. For exact plot specification, details of external and internal finishes, dimensions and floorplan differences, please speak to a member of our Sales Team for more details.



Drayton

3 Bedroom Homes

NOBEL PARK PLOTS: 487, 491, 496, 583, 584, 585, 587 & 590-592



Ground Floor

- KITCHEN / DINING**
6.02M x 3.38M | 19'9" x 11'1"
- LIVING**
4.67M x 3.50M | 15'4" x 11'6"
- WC**
2.17M x 1.15M | 7'1" x 3'9"

First Floor

- BEDROOM 1**
3.71M x 3.14M | 12'2" x 10'4"
- EN SUITE**
2.78M x 1.55M | 9'1" x 5'1"
- BEDROOM 2**
3.57M x 2.78M | 11'8" x 9'1"
- BEDROOM 3**
3.17M x 2.55M | 10'5" x 8'5"
- BATHROOM**
2.24M x 1.97M | 7'4" x 6'5"

KEY
B – Boiler | ST – Store | W – Wardrobe | WC – Cloakroom | WM – Washing Machine |
FF – Fridge/Freezer | ◀▶ – Dimension Location

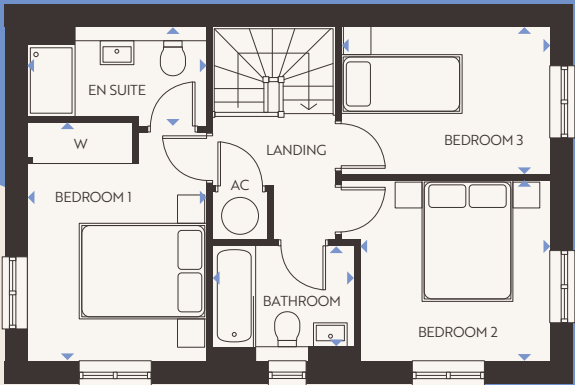
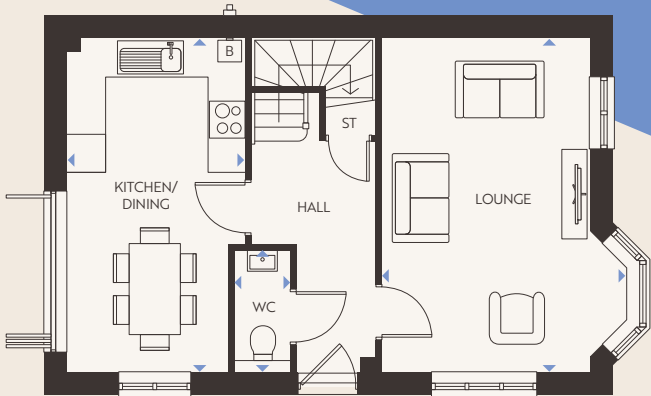
Floorplans shown are indicative only. The kitchen layout and furniture positions are for indicative purposes only. All dimensions indicated are approximate and should not be relied upon for carpet sizes or items of furniture. The developer reserves the right to make changes to these plans prior to exchange of contracts. For exact plot specification, details of external and internal finishes, dimensions and floorplan differences, please speak to a member of our Sales Team for more details.



Farringdon

3 Bedroom Homes

NOBEL PARK PLOTS: 488, 492 & 522



Ground Floor

- KITCHEN / DINING**
5.63M x 3.01M | 18'6" x 9'11"
- LIVING**
5.63M x 3.49M | 18'6" x 11'4"
- WC**
2.06M x 0.97M | 6'9" x 3'2"

First Floor

- BEDROOM 1**
4.02M x 3.05M | 13'2" x 10'0"
- EN SUITE**
3.05M x 1.54M | 10'0" x 5'1"
- BEDROOM 2**
3.22M x 3.06M | 10'7" x 10'1"
- BEDROOM 3**
3.54M x 2.50M | 11'7" x 8'2"
- BATHROOM**
2.38M x 1.97M | 7'10" x 6'5"

KEY

B – Boiler | ST – Store | W – Wardrobe | WC – Cloakroom | WM – Washing Machine |
FF – Fridge/Freezer | ◀▶ – Dimension Location

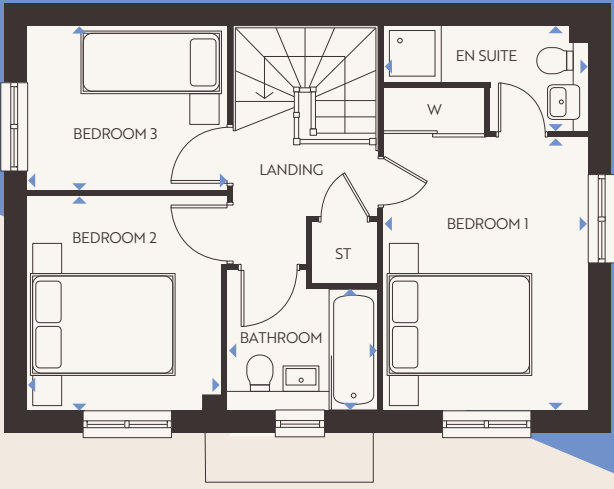
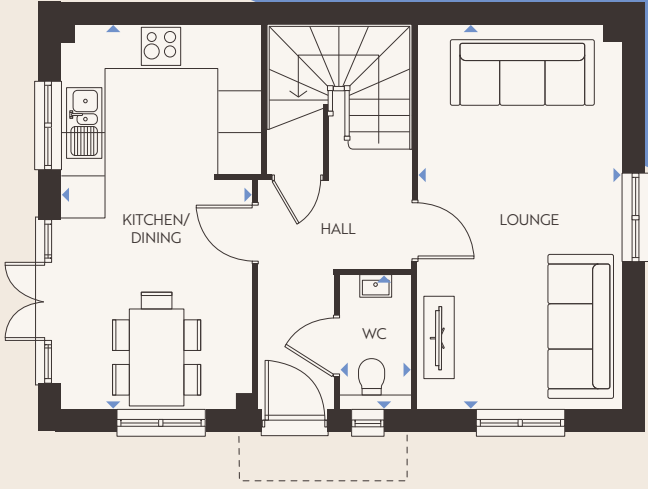
Floorplans shown are indicative only. The kitchen layout and furniture positions are for indicative purposes only. All dimensions indicated are approximate and should not be relied upon for carpet sizes or items of furniture. The developer reserves the right to make changes to these plans prior to exchange of contracts. For exact plot specification, details of external and internal finishes, dimensions and floorplan differences, please speak to a member of our Sales Team for more details.



Kingham

3 Bedroom Homes

NOBEL PARK PLOTS: 478, 534, 536, 544, 566, 611, 613, 620, 624 & 626



Ground Floor

- KITCHEN**
2.80M x 2.63M | 9'2" x 8'8"
- DINING**
2.69M x 2.73M | 8'10" x 8'11"
- LIVING**
2.69M x 5.36M | 8'10" x 17'7"
- WC**
0.97M x 1.89M | 3'2" x 6'2"

First Floor

- BEDROOM 1**
3.68M x 2.86M | 12'1" x 9'4"
- EN SUITE**
1.58M x 1.48M | 5'2" x 4'10"
- BEDROOM 2**
2.80M x 2.65M | 9'2" x 8'8"
- BEDROOM 3**
2.85M x 2.46M | 9'4" x 8'1"
- BATHROOM**
2.24M x 1.70M | 7'4" x 5'7"

KEY

B – Boiler | ST – Store | W – Wardrobe | WC – Cloakroom | WM – Washing Machine |
FF – Fridge/Freezer | ◀▶ – Dimension Location

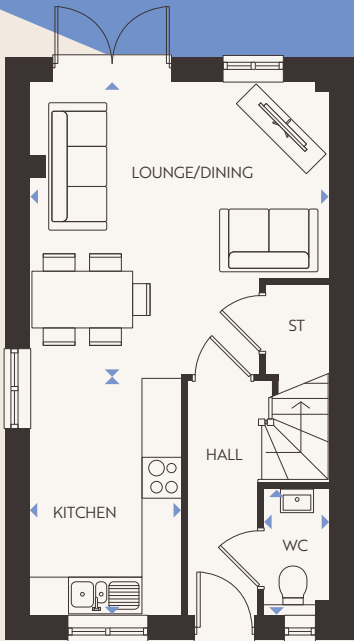
Floorplans shown are indicative only. The kitchen layout and furniture positions are for indicative purposes only. All dimensions indicated are approximate and should not be relied upon for carpet sizes or items of furniture. The developer reserves the right to make changes to these plans prior to exchange of contracts. For exact plot specification, details of external and internal finishes, dimensions and floorplan differences, please speak to a member of our Sales Team for more details.



Lingfield

3 Bedroom Homes

NOBEL PARK PLOTS: 473, 474 & 567-576

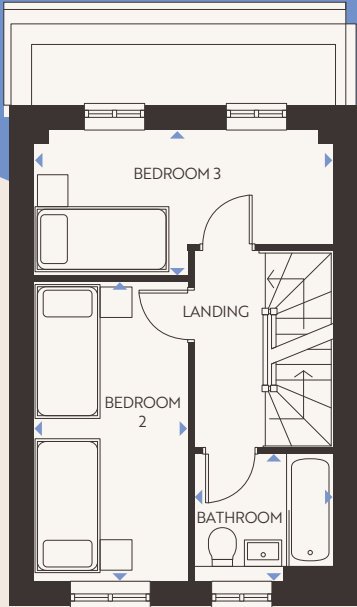


Ground Floor

LIVING/DINING
4.58M x 4.23M | 15'0" x 13'10"

KITCHEN
3.93M x 2.33M | 12'11" x 7'8"

WC
2.00M x 1.04M | 6'7" x 3'5"

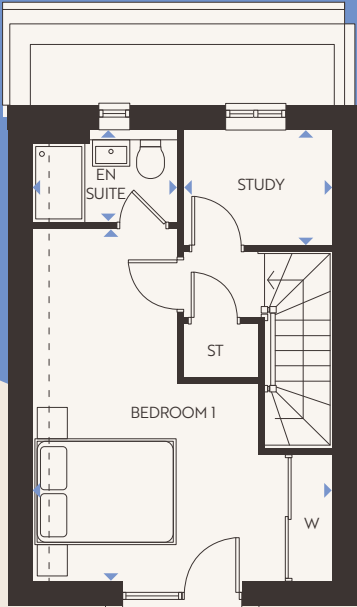


First Floor

BEDROOM 2
4.83M x 2.38M | 15'10" x 7'10"

BEDROOM 3
4.58M x 1.98M | 15'0" x 6'6"

BATHROOM
2.13M x 2.00M | 6'12" x 6'7"



Second Floor

BEDROOM 1
5.24M x 3.83M | 17'2" x 12'7"

EN SUITE
2.29M x 1.49M | 7'6" x 4'11"

STUDY
2.14M x 1.49M | 7'0" x 4'11"

KEY

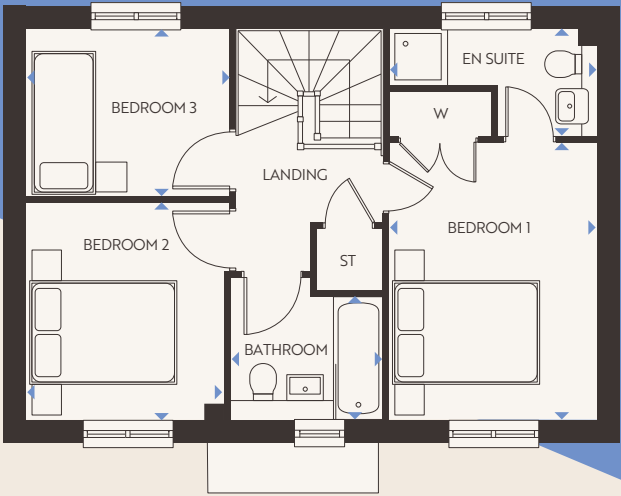
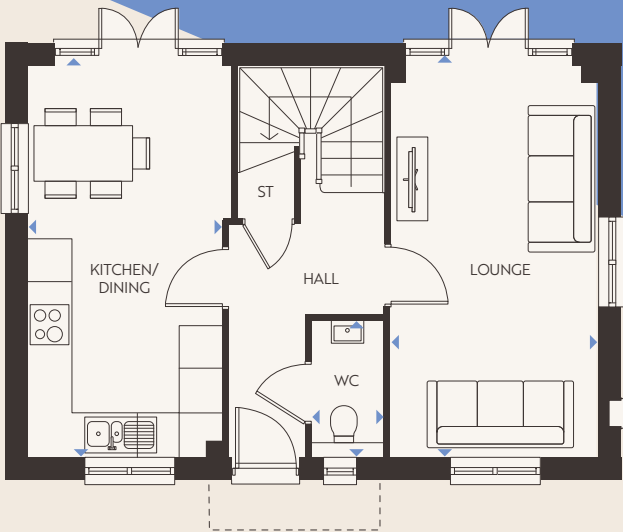
B – Boiler | ST – Store | W – Wardrobe | WC – Cloakroom | WM – Washing Machine |
FF – Fridge/Freezer | ◀▶ – Dimension Location

Floorplans shown are indicative only. The kitchen layout and furniture positions are for indicative purposes only. All dimensions indicated are approximate and should not be relied upon for carpet sizes or items of furniture. The developer reserves the right to make changes to these plans prior to exchange of contracts. For exact plot specification, details of external and internal finishes, dimensions and floorplan differences, please speak to a member of our Sales Team for more details.



3 bedroom homes

NOBEL PARK PLOTS: 475, 476, 535, 537, 538, 539, 540, 541, 563, 577, 578 & 589



Ground Floor

- KITCHEN/DINING**
5.41M x 2.74M | 17'9" x 8'12"
- LIVING**
5.41M x 2.87M | 17'9" x 9'5"
- WC**
1.93M x 1.02M | 6'4" x 3'4"

First Floor

- BEDROOM 1**
3.72M x 2.90M | 12'2" x 9'6"
- EN SUITE**
2.90M x 1.62M | 9'6" x 5'4"
- BEDROOM 2**
2.84M x 2.69M | 9'4" x 8'10"
- BEDROOM 3**
2.89M x 2.50M | 9'6" x 8'3"
- BATHROOM**
2.27M x 1.74M | 7'5" x 5'9"

KEY

B – Boiler | ST – Store | W – Wardrobe | WC – Cloakroom | WM – Washing Machine |
FF – Fridge/Freezer | ◀ ▶ – Dimension Location

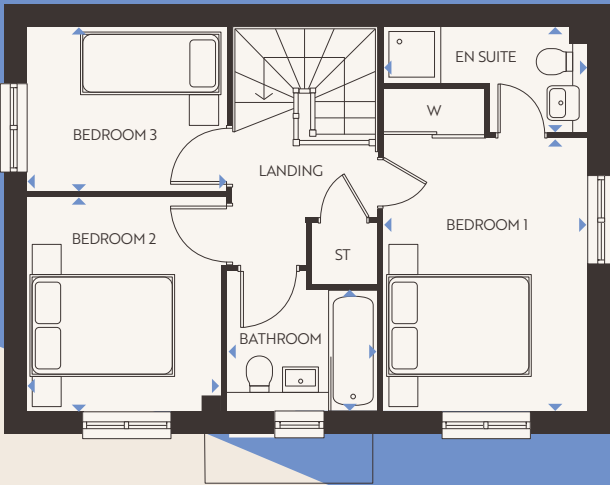
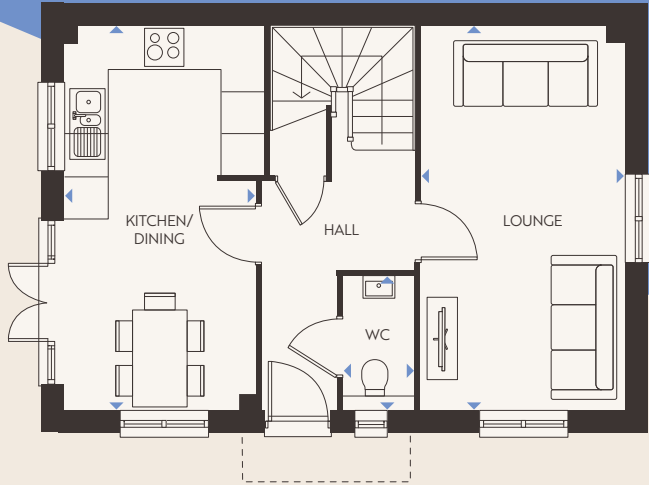
Floorplans shown are indicative only. The kitchen layout and furniture positions are for indicative purposes only. All dimensions indicated are approximate and should not be relied upon for carpet sizes or items of furniture. The developer reserves the right to make changes to these plans prior to exchange of contracts. For exact plot specification, details of external and internal finishes, dimensions and floorplan differences, please speak to a member of our Sales Team for more details.

Pangbourne



3 Bedroom Homes

NOBEL PARK PLOTS: 477, 547, 548, 549, 550, 551, 582, 612, 619 & 625



Ground Floor

- KITCHEN/DINING**
5.71M x 3.21M | 18'9" x 10'7"
- LOUNGE**
4.02M x 3.38M | 13'2" x 11'1"
- WC**
1.88M x 1.00M | 6'2" x 3'3"

First Floor

- BEDROOM 1**
5.01M x 2.65M | 16'5" x 8'8"
- BEDROOM 2**
3.19M x 2.57M | 10'6" x 8'5"
- BEDROOM 3**
2.42M x 2.13M | 7'11" x 6'12"
- BATHROOM**
2.11M x 1.97M | 6'11" x 6'5"

KEY

B – Boiler | ST – Store | W – Wardrobe | WC – Cloakroom | WM – Washing Machine |
FF – Fridge/Freezer | ◀▶ – Dimension Location

Floorplans shown are indicative only. The kitchen layout and furniture positions are for indicative purposes only. All dimensions indicated are approximate and should not be relied upon for carpet sizes or items of furniture. The developer reserves the right to make changes to these plans prior to exchange of contracts. For exact plot specification, details of external and internal finishes, dimensions and floorplan differences, please speak to a member of our Sales Team for more details.

Wycombe

UNPARALLELEDLIVING.UK

UNPARALLELED
LIVING
— AT —
NP
NOBEL PARK

View our
available
rental homes

