



Fforchneol Row, Aberaman

For Sale

Offers invited £148,995



2



1



1



Property Description

Tucked away in a peaceful and sought-after setting on Forchenol Row in Cwmaman, this immaculately presented 2-bedroom semi-detached property offers the perfect blend of modern living with rustic charm. With stunning mountain walks on your doorstep and beautiful valley views, it's the ideal retreat for those seeking tranquillity. The ground floor features a spacious open-plan kitchen and lounge/diner, complete with exposed brick walls that give a lovely rustic feel. The living areas are bright and airy, with a very modern finish. Upstairs, you'll find two good-sized double bedrooms and a stylish bathroom with classy patterned tiles, a freestanding bathtub, and an overhead shower.

Outside, the property boasts a charming corner garden, offering a mix of gravelled areas and a well-maintained lawn. There is also an elevated patio area with a gazebo, ideal for al fresco dining or simply relaxing while enjoying the views. The garden further benefits from a dedicated bar area, making it perfect for entertaining guests. With plenty of parking space available, this property provides the ideal balance of comfort, convenience, and outdoor enjoyment.

LOUNGE DINER 6.07 x 4.25

Very spacious lounge diner. Smooth emulsion walls with a brick feature wall. Wooden style laminate flooring. Smooth emulsion ceilings. Windows to front of property. Double socket. Double Radiator. Stairs to first floor.



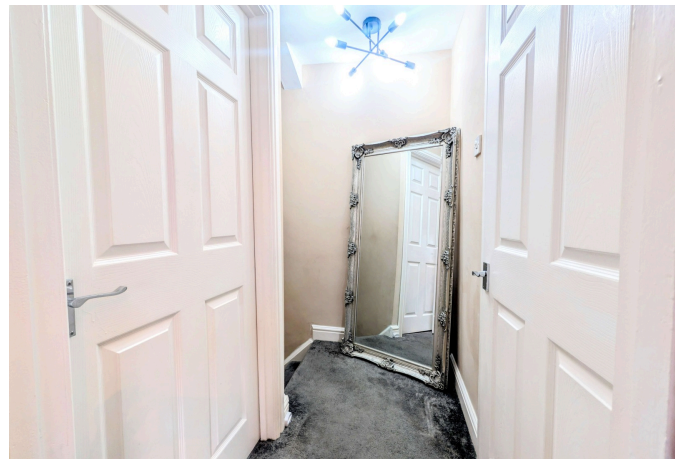
KITCHEN 4.67 x 2.12

Smooth emulsion walls with a brick feature wall. Stylish tiled floor. Smooth emulsion ceiling with spotlights. Grey glossy cabinetry. Matte black pull out tap. Integrated appliances. Plumbed for washing machine. French doors and windows to side of property. Double socket. Double Radiator.



LANDING 1.72 x 0.96

Smooth emulsion walls and ceiling. Grey carpeted flooring. Smooth emulsion. Double socket. Doors to bedrooms.



BEDROOM 1 3.03 x 2.42

Smooth emulsion walls and ceiling. Grey carpeted flooring. Windows to front of property. Double socket. Double Radiator.



BEDROOM 2 3.36 x 2.99

Smooth emulsion walls and ceiling. Grey carpeted flooring. Windows to side of property. Double socket. Double Radiator.



BATHROOM 1.99 x 1.73

Modern patterned tiled flooring. White and black contrast tiled walls. Smooth emulsion ceiling with spotlights. Windows facing rear of property. Heated towel rail. Freestanding bathtub with overhead shower. Hand basin and toilet.



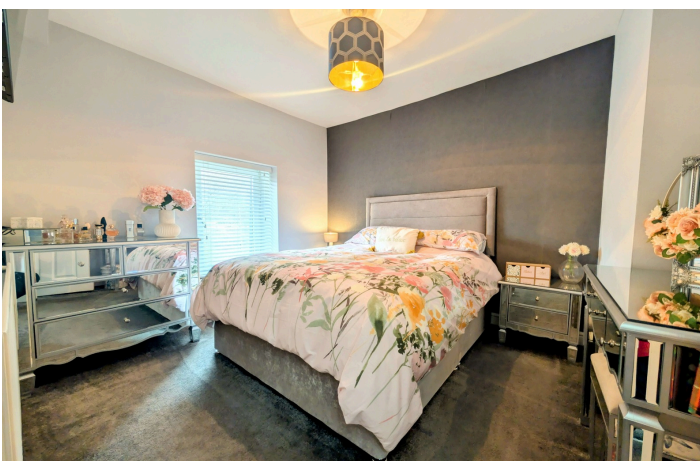
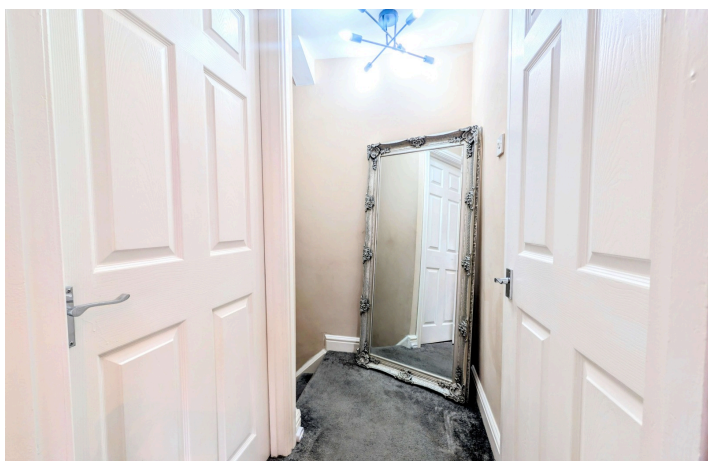
BAR / SUMMER HOUSE 4.04 x 1.68

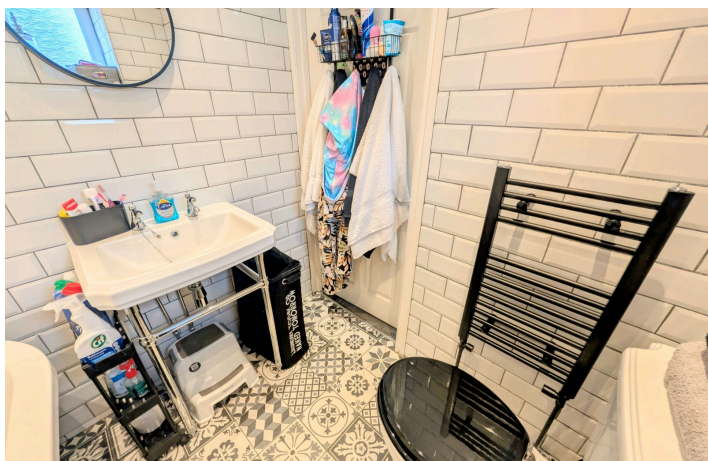
Wooden cladded walls and ceiling. Tiled flooring. UPVC glass door. Double socket. Double Radiator.

GARDEN

L-shaped fenced corner plot. Gravelled area. Lawned area. Elevated patio area with gazebo. Stunning valley views. Plenty of parking to side of the property.







EPC



Floor Plan



Misdescriptions Act 1991

The Agent has not tested any apparatus, equipment fixtures and fittings or services and so cannot verify that they are in working order or fit for the purpose. A buyer is advised to obtain verification from their Solicitor or Surveyor. References to the tenure of a property are based on information supplied by the seller. The Agent has not had sight of the documents. A Buyer is advised to obtain verification from their Solicitor. Items shown in photographs are not included unless specifically mentioned within the sales particulars. They may however be available by separate negotiation. Buyers must check the availability of any property and make an appointment to view before embarking on any journey to see a property.

Data Protection Act 1998

Please note that all personal information provided by customers wishing to receive information and/or services from the estate agent, for the purpose of providing services associated with the business of an estate agent and for the additional purposes set out in the privacy policy but specifically excluding mailings or promotions by a third party. If you do not wish your personal information to be used for any of these purposes, please notify your estate agent.