



Flat 3 The Woolpack

12 Port Street | | Evesham | WR11 1AN

Guide Price £160,000

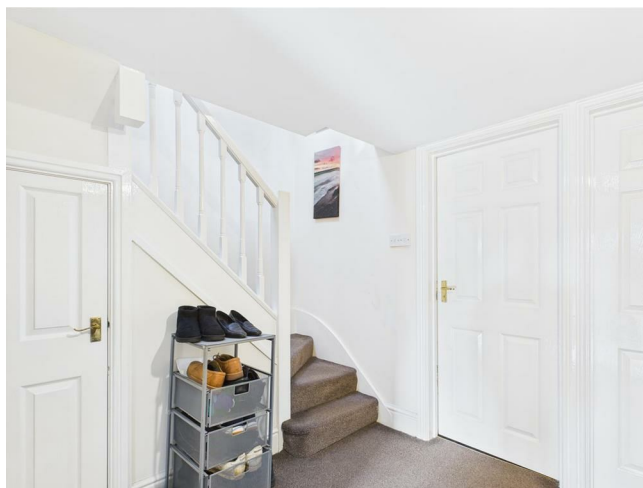
COOPER & CO

Key features

- Barn Conversion
- Character Features Throughout
- Investment Opportunity -
Current income of circa £14,400
pa
- Can be sold with Tenant in Situ at
£1200pcm
- Communal Garden
- Situated at the rear of 12 Port
Street
- ****NO ONWARD CHAIN****
- ****VIEWINGS AVAILABLE 7 DAYS
A WEEK****

Description

****FANTASTIC INVESTMENT OPPORTUNITY - CURRENTLY PRODUCING £14,400 PA WITH SCOPE TO ADD VALUE. UNIQUE 3 BEDROOM BARN CONVERSION SITUATED IN THE HEART OF PORT STREET WITH GOOD SIZED COMMUNAL GARDENS AND EASY ACCESS TO LOCAL AMENITIES**** Internally boasting 3 bedrooms, lounge, dining room, family bathroom, communal entrance and shared communal gardens.



Front

Kitchen

Vinyl underfoot flooring, mix of wall and base units surmounted by work surface, integrated electric hob with extractor fan over, 1 space for white good, 2X single glazed windows to the side aspects, door to dining area.

Dining area

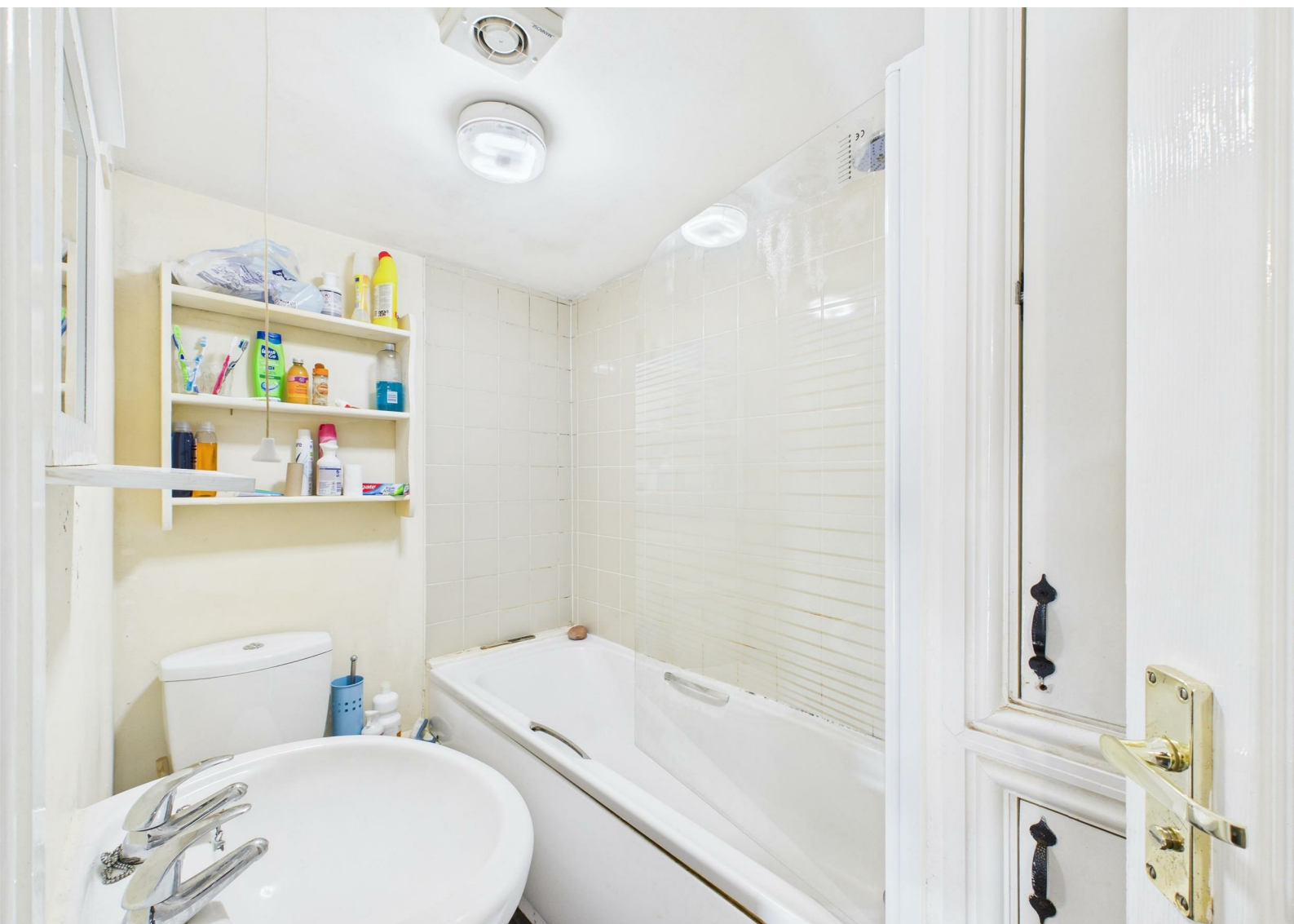
Carpeted flooring, radiator, access to storage compartment. bedroom 1. bathroom, and stairs to first floor

Landing

Carpeted underfoot flooring, 2X single glazed skylight windows to the side aspects, radiator, doors leading to bedroom 2 and bedroom 3

Bedroom 1

Carpeted underfoot flooring, radiator, single glazed window to the side aspect







Bathroom

Vinyl underfoot flooring, part tiled, wash hand basin, low flush wc, bath with shower overhead

Bedroom 2

Carpeted underfoot, flooring, radiator, single glazed window to the side aspect, single glazed skylight window to the side aspect

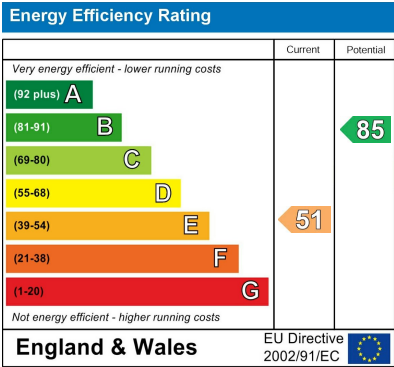
Bedroom 3

Carpeted underfoot flooring, 2X single glazed skylight windows to the side aspect, single glazed window to the front aspect

Communal Garden

Secured communal laid to lawn rear garden boarded by mature plants and hedging, access to the flat/cottage (Kitchen)

Floor plans



I Port Street
Evesham
Worcestershire
WR11 3LA
01386 574 000
sales@cooperandcoestateagents.co.uk