



High Street | | Evesham | WR11 4HG

Guide Price £650,000

COOPER & CO

Key features

- Residential Development Opportunity
- Full Planning Consent for Conversion of building to 14 Apartments
- An immediately implementable development in a proven residential location
- Application No. W/22/00817/FUL (Wychavon District Council)
- Section 106 paid in full; £56,000
- **VIEWINGS AVAILABLE 7 DAYS A WEEK**

Description

****RESIDENTIAL DEVELOPMENT OPPORTUNITY - FULL PLANNING CONSENT FOR CONVERSION OF BUILDING TO 14 APARTMENTS, CYCLE ROOM AND STORAGE****

A consented and immediately implementable residential development opportunity for conversion and construction of 14 Residential flats in central Evesham - High Street location.

Application No. W/22/00817/FUL (Wychavon District Council)

This is a turnkey, consented residential development opportunity offering:

- Full planning approval in place
- An immediately implementable development in a proven residential location
- Scale and configuration ideally suited to local or regional developers
- Site suited for either a build to rent or sell model

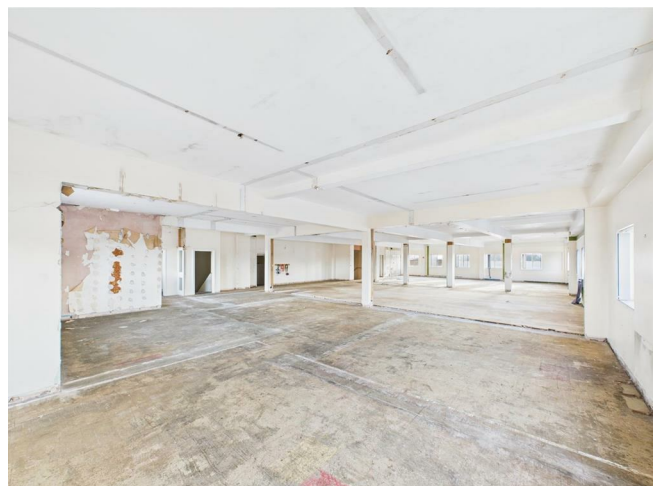
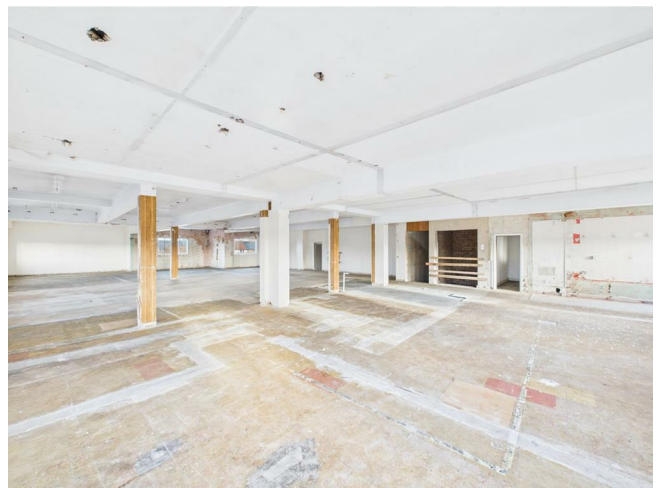
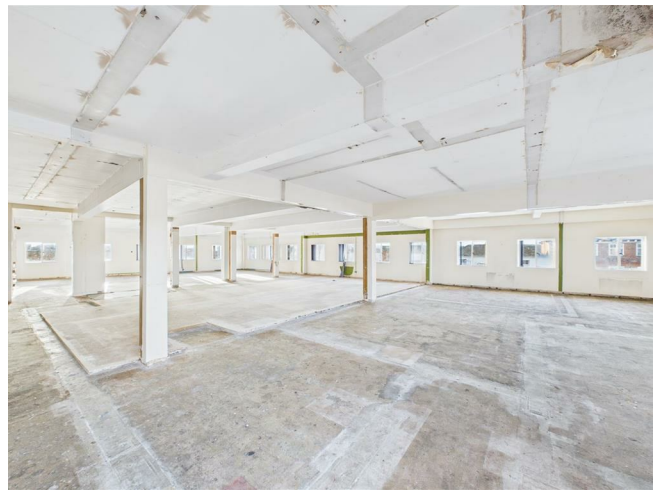
Section 106 paid for in full and made up of:

1. Off Site Built Sports Contribution: £15,483.00
 2. Off Site Formal Sports Contribution: £24,748.00
 3. Off Site Public Space Contribution: £13,094.24
 4. Primary Care Contribution: £2,706.00
- Total: £56,031.24

Tenure: Leasehold. -

Long Lease to be made available subject to negotiation.

For further information, please contact our friendly sales team today.

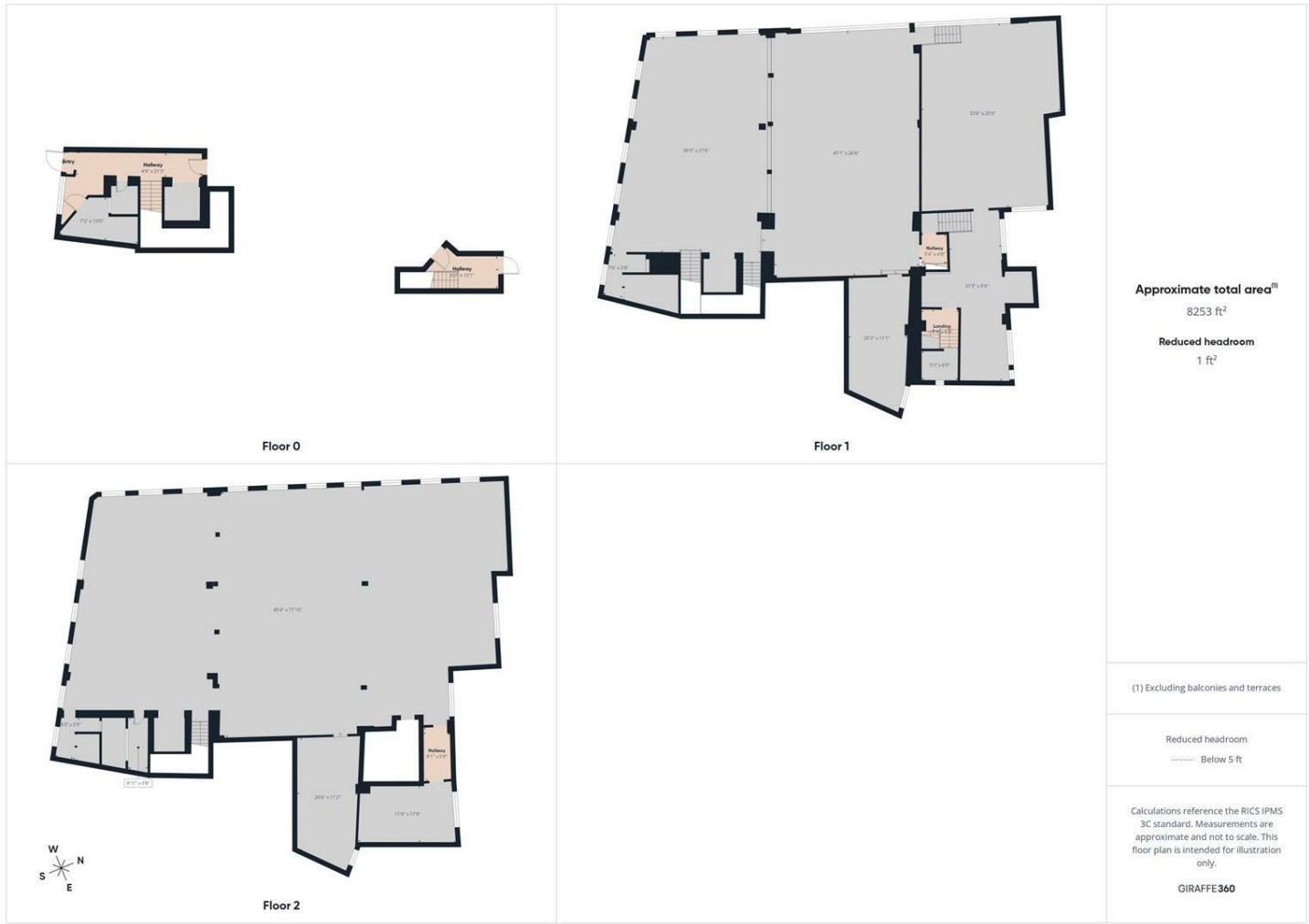








Floor plans



I Port Street
Evesham
Worcestershire
WR11 3LA
01386 574 000

sales@cooperandcoestateagents.co.uk