



Albert Road | | Evesham | WR11 4LB

Guide Price £225,000

**Nigel Poole
& Partners**

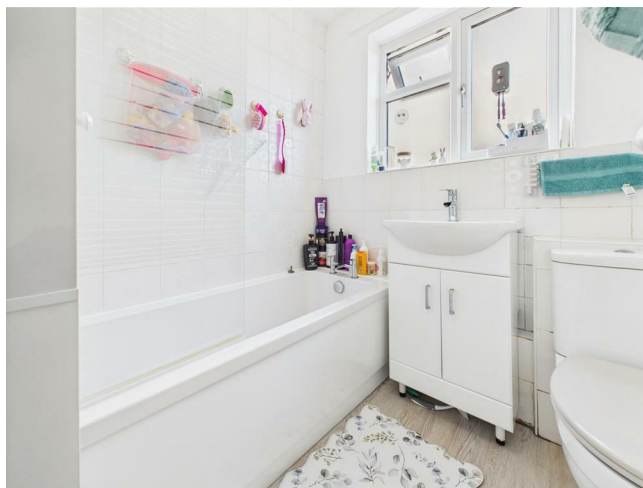
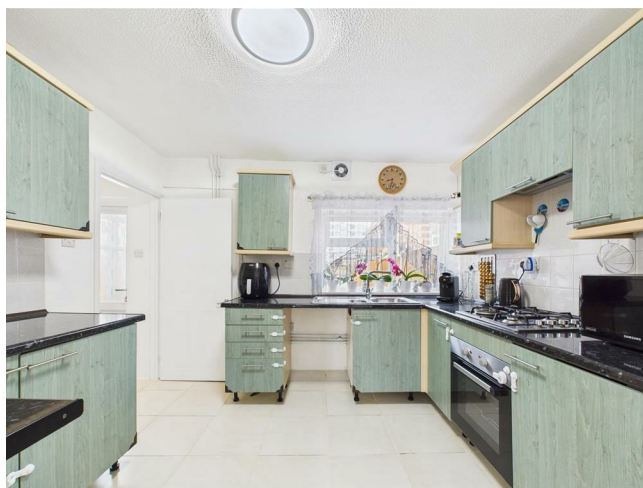
Key features

- 3 bedrooms
- Central location
- Well presented & modernized throughout
- Generous sun room
- Landscaped rear garden
- ****NO ONWARD CHAIN****
- ****VIEWINGS AVAILABLE 7 DAYS A WEEK****

Description

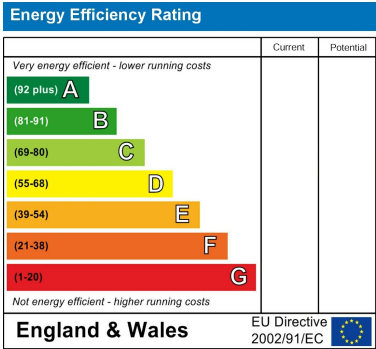
****WELL PRESENTED 3 BEDROOM END-TERRACE WITH SUN ROOM, UTILITY & LANDSCAPED REAR GARDEN IN POPULAR CENTRAL EVESHAM LOCATION**** Internally the property boast 3 bedrooms, family bathroom, lounge, kitchen diner, utility room and sun room. Externally well maintained front garden with side access leading to landscaped rear garden containing a good mix of lawned and patio areas with vegetable patch and fruit trees. The property is ideal for growing families, first time buyers and investors alike.

Directions





Floor plans



I Port Street
Evesham
Worcestershire
WR11 3LA
07932803042
leo.cooper@nigelpoolestateagents.co.uk