



Bevans Lane | | Hinton-On-The-Green | WRI | 2QY

Guide Price £450,000

**Nigel Poole
& Partners**

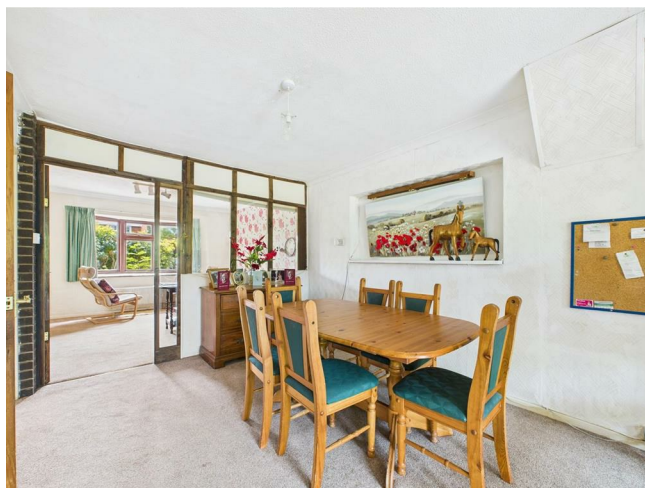
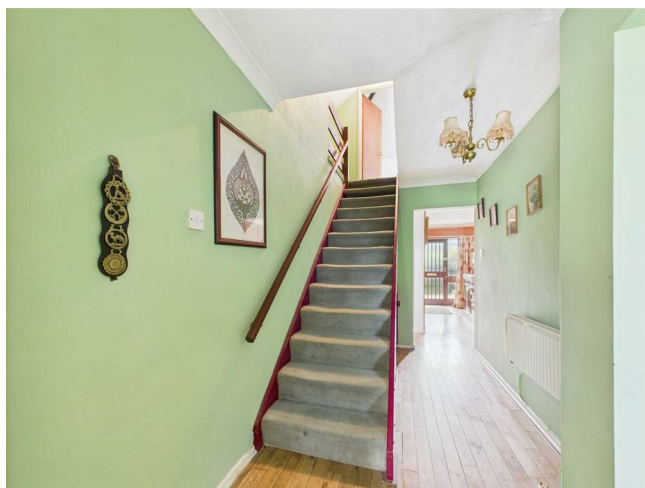
Key features

- Detached Dorma Bungalow
- Fabulous gardens on a generous plot
- Far reaching views of rural countryside
- In the ever popular village of Hinton-On-The-Green
- Enviaible position on edge of this picturesque village
- Heavily extended
- Flexible living space
- ****NO ONWARD CHAIN****
- ****VIEWINGS AVAILABLE 7 DAYS A WEEK****

Description

****DETACHED DORMA BUNGALOW WITH FABULOUS GARDENS, A GENEROUS PLOT IN AN ENVIABLE POSITION ON THE EDGE OF THE PICTURESQUE VILLAGE OF HINTON-ON-THE-GREEN**** Internally boasting 3 bedrooms, 2 bathrooms, 3 reception rooms, kitchen, and conservatory. Externally the property boasts a block paved driveway with ample parking, garaging, landscaped and well planted mature rear gardens with beautiful rural outlook.

Directions



Front

Property is approached via paved driveway with ample parking, bordered by mature hedging, and side access to the rear garden.

Entrance Hall

Wooden flooring, doors to bathrooms 1 and 2, dining area, lounge, bedrooms 1 and 2, stairs to bedroom 3, radiator

Bedroom 1

Carpeted flooring, radiator, DG UPVC bay window to the front aspect, built in wardrobe

Bedroom 2

Carpeted flooring

Bedroom 3

Carpeted flooring, DG UPVC window to the rear aspect

Bathroom 1

Vinyl flooring, half tiled, wash hand basin, low flush wc, bathtub







Bathroom 2

Vinyl flooring, wash hand basin, low flush wc, shower cubicle with shower overhead, frosted DG UPVC window to the rear aspect.

Lounge

Carpeted flooring, radiator, DG UPVC sliding door to the rear garden, DG UPVC window to the side aspect, DG UPVC patio doors to the conservatory

Dining area

Carpeted flooring, radiator, access to the reception room, kitchen, and conservatory.

Conservatory

Vinyl flooring, DG UPVC window to the rear aspect, kitchen sink with drainer, mix of wall and base units surmounted by work surface, 2 spaces for white goods, integrated electric hob with extractor fan over, integrated oven.

Reception Room

Carpeted flooring, radiator, DG UPVC bay window to the front aspect

Rear Garden

Fabulous gardens comprising of a mix of patio, planted and lawned area bordered by a mix of mature trees, shrubs and hedging.

Floor plans



Floor 0



Floor 1

Approximate total area⁽ⁿ⁾1713 ft²

Reduced headroom

25 ft²

(1) Excluding balconies and terraces

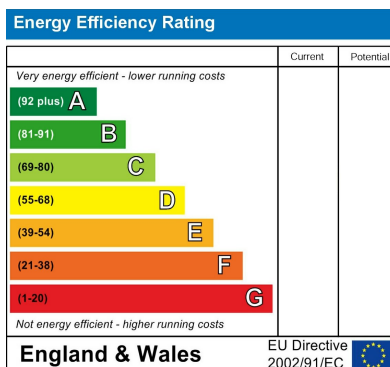
Reduced headroom

..... Below 5 ft

While every attempt has been made to ensure accuracy, all measurements are approximate, not to scale. This floor plan is for illustrative purposes only.

Calculations are based on RICS IPMS 3C standard.

GIRAFFE360



1 Port Street
Evesham
Worcestershire
WR11 3LA
07932803042

leo.cooper@nigelpoolestateagents.co.uk