



| Lenchwick | Evesham | WR11 4TG

Guide Price £550,000



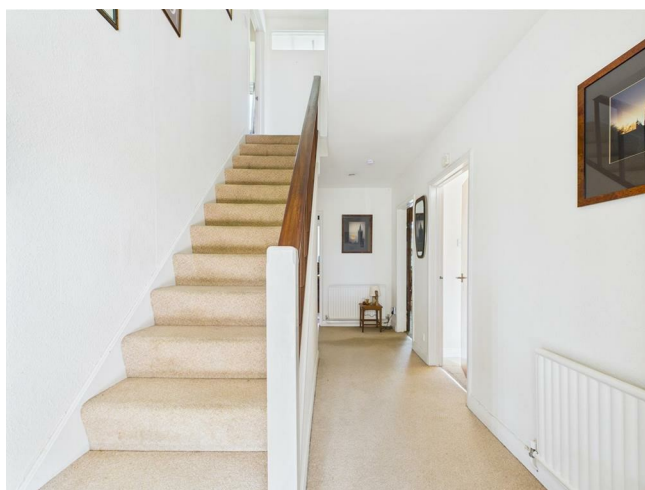
Key features

- Fabulous detached property in need of reburishment
- Stunning far reaching views over countryside
- Idyllic 1/2 Acre plot
- Oozing potential
- In the ever popular Lenchwick
- ****NO ONWARD CHAIN****
- ****VIEWINGS AVAILABLE 7 DAYS A WEEK****

Description

****FABULOUS DETACHED PROPERTY IN NEED OF REFURBISHMENT SITTING IN A IDYLIC 1/2 ACRE PLOT WITH STUNNING COUNTRYSIDE VIEWS IN THE EVER POPULAR LENCHWICK**** Needing refurbishment throughout Internally the property boasts 3 bedrooms, family bathroom, large double aspect lounge, formal dining room, kitchen diner, wc, utility room and conservatory. Externally the property benefits from a double attached and heavily extended garages and sits on a stunning circa 1/2 plot with a mix of lawns, flower beds, vegetable patches and mature trees and hedging. The far reaching views, bags of potential and beautiful location needs to be seen.

Directions



Front

Property is approached via a long driveway with well planted and hedged borders opening up into ample parking spaces and a large front lawn.

Entrance Hall

Carpeted flooring, access to Dining Room and Kitchen, downstairs wc, lounge, bedrooms 1 and 2, stairs leading to 1st floor, radiator

Bedroom 1

Carpeted flooring, radiator, dg upvc window to the front aspect

Bedroom 2

carpeted flooring, dg upvc window to the rear aspect, radiator

Family bathroom

Tiled flooring, frosted dg upvc window to rear aspect, fully tiled, bath with shower overhead, wash hand basin, low flush wc,

Lounge

Carpeted flooring, feature fireplace and surround, dg upvc window to the front aspect, dg upvc sliding patio doors to the front aspect, radiator.

Kitchen/Dining area

Mixed carpeted and tiled flooring, radiator, access to conservatory, and utility room, mix of wall and base units surmounted by work surface, integrated electric hob with extractor fan over, integrated oven, 2 spaces for white goods







Utility Room

Tiled flooring, base units surmounted by work surface, sink with drainer, space for white goods, access to downstairs wc

Downstairs WC

Tiled flooring, fully tiled, low flush wc, wash hand basin, window to side aspect

Conservatory

Flagstone tiled flooring, dg upvc windows to the rear aspect, and dg upvc patio doors leading to rear garden,

Landing

Carpeted flooring, doors to bedroom 3 and 4

Bedroom 3

Carpeted flooring. Radiator, dg upvc window to the rear aspect, built in wardrobe with sliding mirror doors, access to office

Office

Carpeted flooring, dg upvc window to the front aspect, radiator

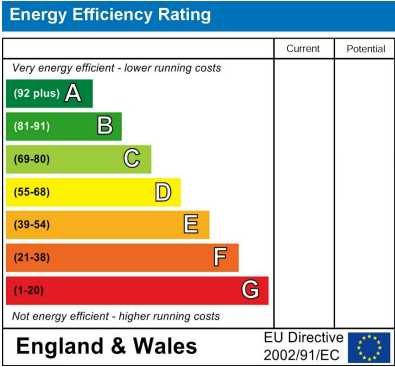
Bedroom 4

Carpeted flooring, radiator, 2x dg upvc window to the side and rear aspect, built in wardrobe with sliding mirror doors, access to storage unit

Garden

Fabulous 1/2 acre plot. Rear gardens starts with raised patio area with stunning countryside views and gives way to a laid lawn with well planted mix of fruit and mature trees with hedged borders.

Floor plans



I Port Street
Evesham
Worcestershire
WR11 3LA
07932803042
leo.cooper@nigelpoolestateagents.co.uk