



Badsey Gardens, Bretforton Road | | Badsey | WR11 7XG

£402,500



Key Features

- COMING SOON. Estimated completion: July - August
- Quality finish throughout
- Open plan kitchen/diner with French doors to the garden
- 3 double bedrooms
- 15ft lounge
- Family bathroom
- Garage
- Principal bedroom with dressing area and en-suite
- Energy rating: B

Description

STUNNING BRAND NEW 3 BEDROOM DETACHED HOUSE WITH GARAGE+PARKING SPACES, HIGH QUALITY FINISH THROUGHOUT, COMING SOON TO THE EVER POPULAR VILLAGE OF BADSEY, IN THE EXCITING NEW DEVELOPMENT, BADSEY GARDENS. Internally the property boasts 3 bedrooms, 1 with walkthrough dressing area and en-suite, family bathroom, lounge, kitchen diner, downstairs WC. Externally the property benefits from an EV Charger, solar panels, a garage and parking spaces at the front, and a well presented private garden.

Please note:

Image carousel may contain artists impressions and photography showing optional extras.



Front

Property is approached via driveway/pathway, bordered with lawned area, and shrubs/hedging.

Entrance Hallway

Access to lounge, and upstairs landing.

Lounge

Radiator, UPVC DG window to the front aspect, access to kitchen/diner, and storage unit.

Kitchen/Diner

UPVC DG window to the rear aspect. Sink and drainer, UPVC DG French doors leading to garden, access to downstairs WC.

Landing

Access to family bathroom, bedroom 1, 2, and 3.

Bedroom 1

Radiator, UPVC DG Window to the front aspect, access to dressing aread and en-suite







Bedroom 1 en-suite

Frosted UPVC DG window to the rear aspect, Wash hand basin, low flush WC, walk-in shower with shower overhead.

Bedroom 2

Radiator, storage compartment unit.

Bedroom 3

Radiator, storage compartment unit.

Family Bathroom

Part tiled, bathtub, low flush WC, wash hand basin, frosted UPVC DG Window to the side aspect.

Tenure: Freehold

Additional info

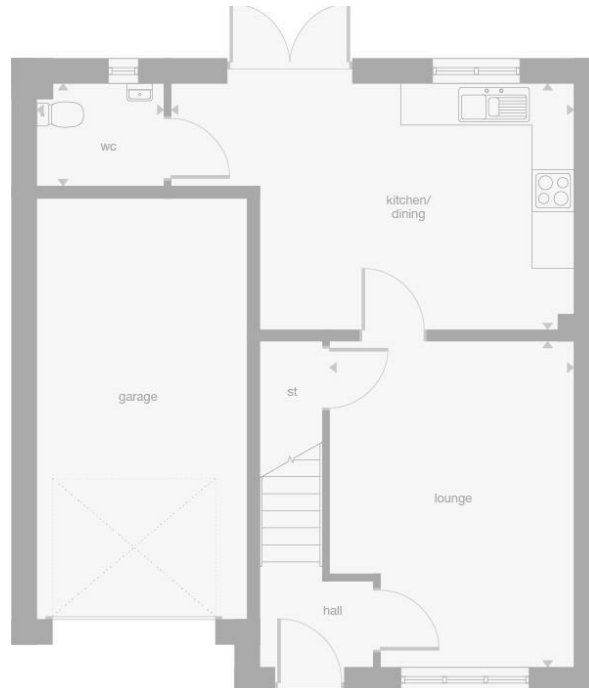
Annual service charges / management services: £285

Broadband and Mobile Information

To check broadband speeds and mobile coverage for this property please visit:

<https://www.ofcom.org.uk/phones-telecoms-and-internet/advice-for-consumers/advice/ofcom-checker> and enter postcode WR11 7XG

Floor Plan



1 Port Street
Evesham
Worcestershire
WR11 3LA
07932803042

leo.cooper@nigelpoolestateagents.co.uk