



Badsey Gardens, Bretforton Road | | Badsey | WR11 7XG

£499,995





### Key Features

- COMING SOON. Estimated completion: June - July
- Quality finish throughout
- Open-plan kitchen/diner with French doors to the garden
- Separate laundry room
- Separate study room
- Principal bedroom with en-suite
- 14ft lounge
- 4 bedrooms
- Energy rating: B

### Description

STUNNING BRAND NEW 4 BEDROOM DETACHED HOUSE WITH SINGLE GARAGE, HIGH QUALITY FINISH THROUGHOUT, COMING SOON TO THE EVER POPULAR VILLAGE OF BADSEY, IN THE EXCITING NEW DEVELOPMENT, BADSEY GARDENS. Internally the property boasts 4 bedrooms, 1 with en-suite, family bathroom, separate laundry room, dedicated study room, downstairs WC, stylish lounge and airy, open-plan kitchen and dining room, Externally the property benefits from an EV Charger, solar panels, a single garage, and a well presented private garden.

Please note:

Image carousel may contain artists impressions and photography showing optional extras



#### Front

Property is approached via driveway/pathway, bordered with lawned areas, and shrubs/hedging.

#### Entrance Hallway

Access to study room, lounge, downstairs WC, kitchen/diner, and upstairs landing.

#### Study room

Radiator, UPVC DG window to the front aspect.

#### Lounge

Radiator, UPVC DG Window to the front aspect.

#### Kitchen/Diner

Upgraded kitchen with integrated f/freezer and dishwasher. Outside tap and external electrical socket, mix of wall and base units surmounted by work surface, sink and drainer, integrated oven and hob with extractor fan over, UPVC DG French doors leading to garden, UPVC DG window to the rear aspect, access to laundry room, storage unit, and garden.

#### Downstairs WC

Wash hand basin, heated towel rail. low flush WC.

#### Landing

UPVC DG Window to the side aspect, access to family bathroom, bedroom 1, 2, 3, and 4.

#### Bedroom 1

Radiator, UPVC DG Window to the front aspect











#### Bedroom 1 en-suite

Wash hand basin, low flush WC, walk-in shower with shower overhead.

#### Bedroom 2

Radiator, UPVC DG Window to the front aspect

#### Bedroom 3

Radiator, UPVC DG Window to the rear aspect,

#### Bedroom 4

Radiator, UPVC DG Window to the rear aspect,

#### Family bathroom

Part tiled, bath, low flush WC, wash hand basin, frosted UPVC DG Window to the side aspect.

Tenure: Freehold

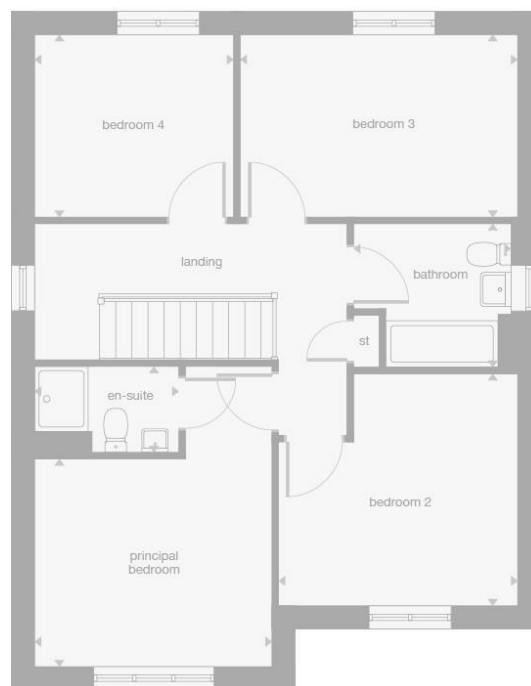
#### Additional info

Annual service charges / management services: £285

#### Broadband and Mobile Information

To check broadband speeds and mobile coverage for this property please visit: <https://www.ofcom.org.uk/phones-telecoms-and-internet/advice-for-consumers/advice/ofcom-checker> and enter postcode WR11 7XG

## Floor plan



1 Port Street  
Evesham  
Worcestershire  
WR11 3LA  
07932803042  
[leo.cooper@nigelpoolestateagents.co.uk](mailto:leo.cooper@nigelpoolestateagents.co.uk)