



Mill Street | | Evesham | WR11 4HU

Offers Over £150,000

**Nigel Poole
& Partners**

Key features

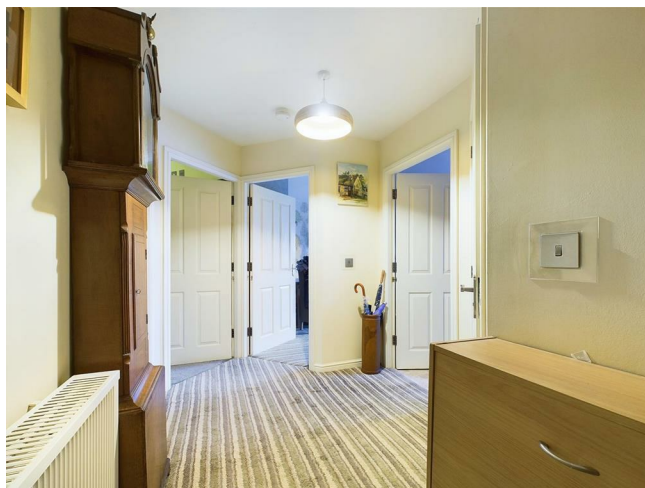
- Riverside Views
- 2 Double Bedrooms
- Ensuite to master bedroom
- Riverside Balcony
- Garage
- Workshop
- High Quality Finish Kitchen
- Desirable Location
- Gated community
- Buy To Let opportunity

Description

****BEAUTIFULLY PRESENTED RIVERSIDE APARTMENT WITH RIVERSIDE FACING BALCONY AND FABULOUS RIVER VIEWS, TWO DOUBLE BEDROOMS, GARAGE, WORKSHOP AND GATED COMMUNITY****

This fabulous riverside apartment is both spacious and well presented and internally boasts not only 2 double bedrooms, but good sized lounge, kitchen diner, family bathroom and ensuite to master bedroom. Externally the property benefits from a garage and integrated workshop and communal gardens.

Directions





Floor plans



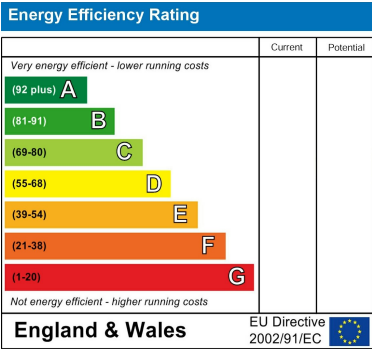
Approximate total area[®]
1083.39 ft²



(1) Excluding balconies and terraces

Reduced headroom
..... Below 5 ft

While every attempt has been made to ensure accuracy, all measurements are approximate, not to scale. This floor plan is for illustrative purposes only.
Calculations are based on RICS IPMS 3C standard.
GIRAFFE360



I Port Street
Evesham
Worcestershire
WR11 3LA
07932803042
leo.cooper@nigelpoolestateagents.co.uk