



Milward Place | Salford Priors | Evesham | WR11 8UF

Guide Price £275,000



Key features

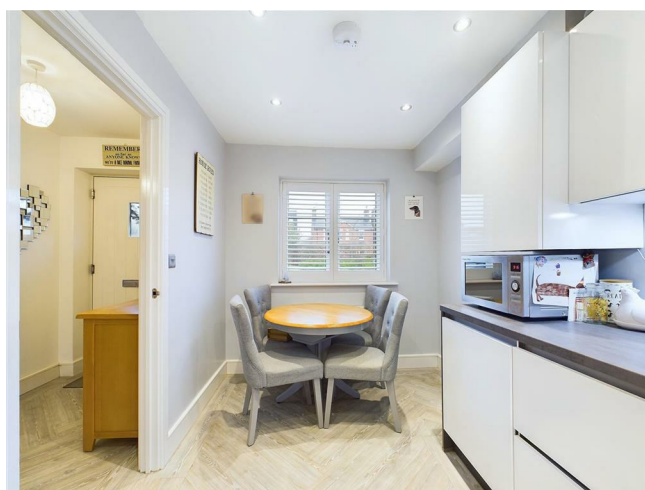
- Sought after location
- Exceptional finish throughout
- Well-presented private walled garden
- Detached Garage
- 2 double bedrooms
- ****VIEWING AVAILABE 7 DAYS A WEEK****

Description

****BEAUTIFULLY PRESENTED 2 BEDROOM SEMI-DETACHED HOUSE IN THE EVER POPULAR SALFORD PRIORS. HIGH QUALITY FINISH THROUGHOUT. SINGLE DETACHED GARAGE AND PRIVATE WALLED GARDEN****

Internally boasts 2 double bedrooms, family bathroom, kitchen diner, lounge and downstairs w.c. Externally the property benefits from a detached single garage and well presented and kept private walled garden.

Directions





Energy Efficiency Rating		Current	Potential
<i>Very energy efficient - lower running costs</i> 			
<i>Not energy efficient - higher running costs</i>			



1 Port Street
Evesham
Worcestershire
WR11 3LA
07932803042
leo.cooper@nigelpoolestateagents.co.uk