



| Wood Norton | Evesham | WR11 4TE

Guide Price £495,000

Nigel Poole
& Partners

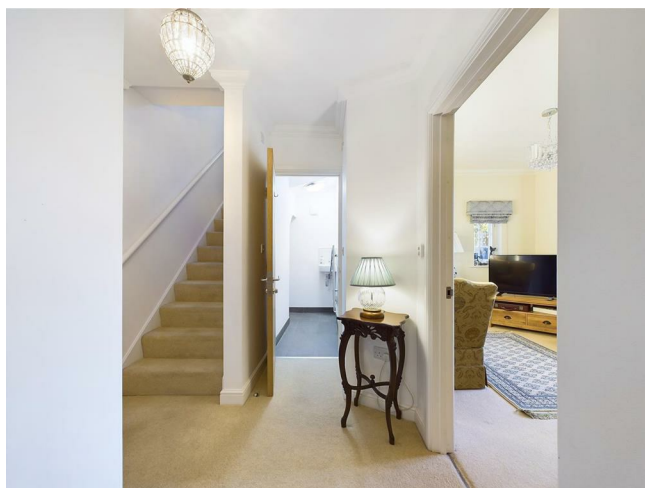
Key features

- Fabulous Grade II listed Gate House
- Fully Refurbished
- Period Features Through-Out
- Far reaching views over countryside
- Landscaped gardens with mature planting
- Desirable Village Location
- Within the grounds of Richmond Wood Norton retirement village yet independent from it
- ****NO ONWARD CHAIN****
- ****VIEWINGS AVAILABLE 7 DAYS A WEEK****

Description

****FABULOUS FULLY REFURBISHED DETACHED GRADE II LISTED GATEHOUSE WITH STUNNING COUNTRYSIDE VIEWS, GENEROUS GARDENS IN A DESIRABLE LOCATION**** Set within the grounds of the stunning Richmond Wood Norton retirement village yet independent from it stands South Lodge. Fully refurbished, high quality finish but still adorned in original features throughout this fabulous gatehouse is a must see. Internally the property boasts 2 double bedrooms, family bathroom, lounge, modern fully fitted kitchen diner, downstairs wc and home office. Externally The South Lodge benefits from fabulous spacious rear and side landscaped gardens which offer a mix of well planted mature trees, plants and shrubs with hedged and fenced borders. External storage room and plenty of off street parking. All of which complimented with far reaching views of open countryside.

Directions





Floor plans



Energy Efficiency Rating		
	Current	Potential
Very energy efficient - lower running costs		
(92 plus) A		
(81-91) B		
(69-80) C		
(55-68) D		
(39-54) E		
(21-38) F		
(1-20) G		
Not energy efficient - higher running costs		
England & Wales		EU Directive 2002/91/EC



I Port Street
Evesham
Worcestershire
WR11 3LA
07932803042
leo.cooper@nigelpoolestateagents.co.uk