



Clyde Avenue | | Evesham | WR11 3FE

Guide Price £325,000

Nigel Poole
& Partners

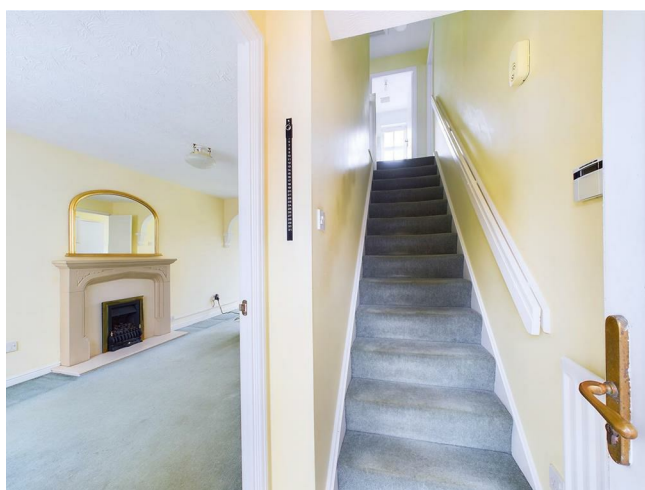
Key features

- Three bedroom detached family home
- Garage and driveway
- Ensuite to master
- Quiet cul-de-sac location
- On the ever popular Cotswolds Rise development
- ****NO ONWARD CHAIN****
- ****VIEWING AVAILABLE 7 DAYS A WEEK****

Description

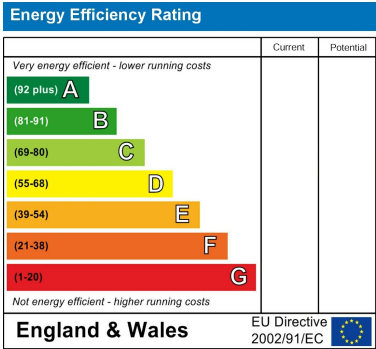
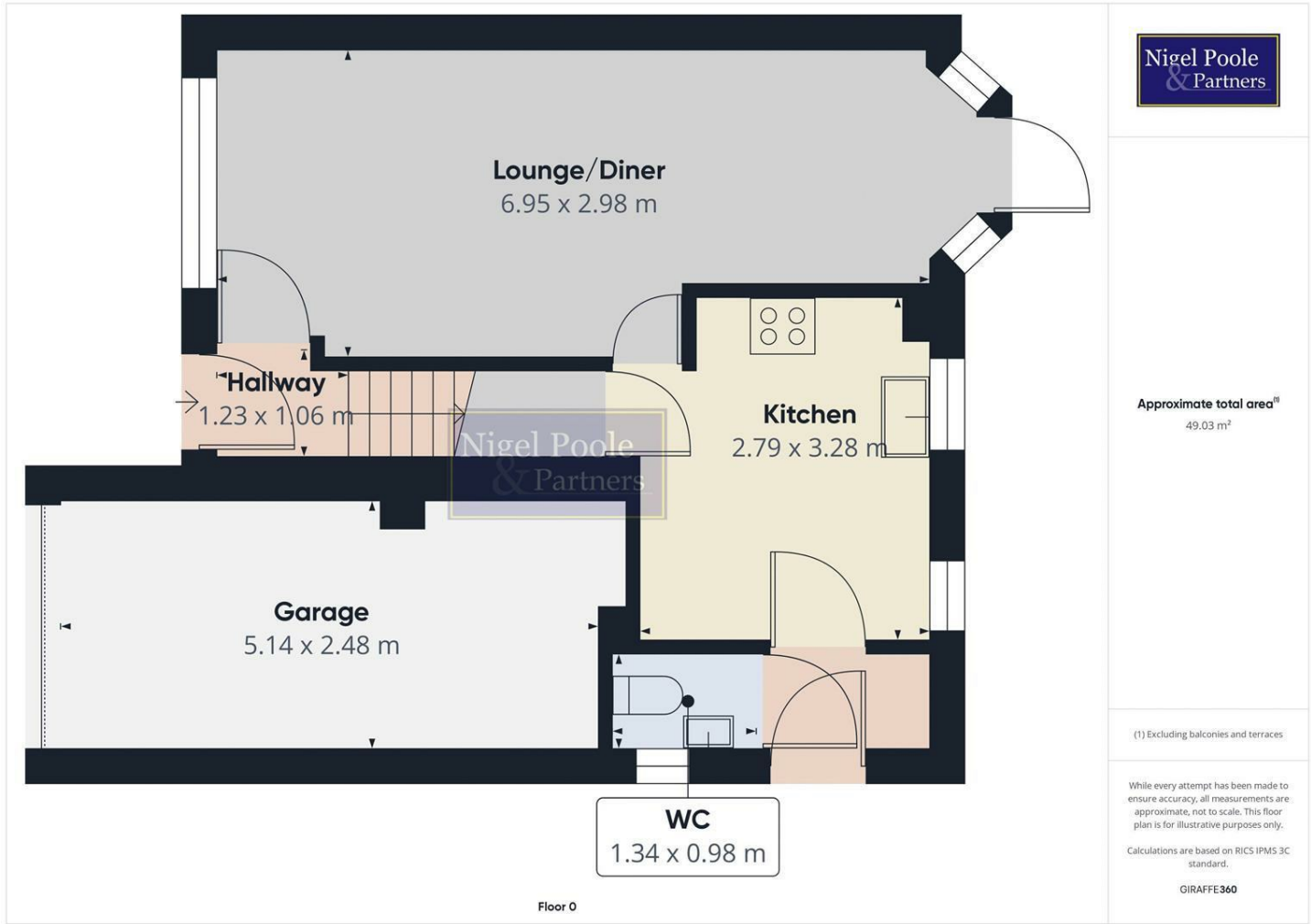
****DETACHED THREE BEDROOM FAMILY HOME WITH GARAGE AND DRIVEWAY ON THE EVER-POPULAR COTSWOLDS RISE DEVELOPMENT**** Internally the property boasts a generous through lounge, with dual aspect and feature fireplace and surround, well fitted kitchen, utility room, WC, 3 bedrooms, one with an ensuite and family bathroom. Externally the property benefits from a single garage and driveway for parking, laid to lawn rear garden with patio area, and side access. The property is ideally located with easy access to the Market Town Centre of Evesham with a wide range of amenities and transport links and close proximity to well serviced bus routes.

Directions





Floor plans



I Port Street
Evesham
Worcestershire
WR11 3LA
07932803042
leo.cooper@nigelpoolestateagents.co.uk