



Sheriffs Lench | | Evesham | WR11 4SN

Offers Over £735,000

Nigel Poole
& Partners

Key features

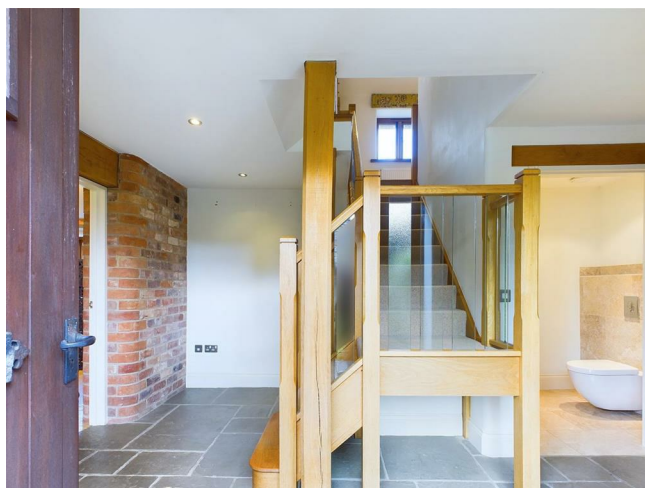
- Exquisite barn conversion
- Annex / home gym
- High quality finish throughout
- Adorned in exposed beams and features
- Generous plot size perfect for entertaining
- Views over rural countryside
- Double garaging
- ****360 WALK THROUGH TOUR****
- ****NO ONWARD CHAIN****
- ****VIEWINGS AVAILABLE 7 DAYS A WEEK****

Description

****EXQUISITE 4 BEDROOM BARN CONVERSION IN THE EVER POPULAR SHERIFFS LENCH, BOASTING A GENEROUS SIZED PLOT, VIEWS OVER RURAL COUNTRYSIDE, ANNEX / HOME GYM / OFFICE, DOUBLE GARAGING AND MORE****

Internally the property boasts a fabulous high quality kitchen diner, lounge, study, utility room, and downstairs wc. 4 bedrooms (with the option to create a 5th) above, 2 ensuite, with one of which being a decadent master suite plus a family bathroom. Externally the property has ample off-street parking for 4 cars with a beautiful generous sized lawned and bordered private garden that is just perfect for entertaining.

Directions






Floor plans



Energy Efficiency Rating		Current	Potential
<p><i>Very energy efficient - lower running costs</i></p> <p>(92 plus) A</p> <p>(81-91) B</p> <p>(69-80) C</p> <p>(55-68) D</p> <p>(39-54) E</p> <p>(21-38) F</p> <p>(1-20) G</p> <p><i>Not energy efficient - higher running costs</i></p>			

England & Wales

EU Directive
2002/91/EC





1 Port Street
Evesham
Worcestershire
WR11 3LA
07932803042
leo.cooper@nigelpooleestateagents.co.uk