



Stratford Road | Harvington | Evesham | WR11 8NP

Offers Over £275,000

Nigel Poole
& Partners

Key features

- Fabulous character property
- Original features throughout
- Newly fitted first floor bathroom
- Oozing charm
- Grade II listed
- Detached garden
- Living Room with feature inglenook fireplace
- ****NO ONWARD CHAIN****
- ****VIEWINGS AVAILABLE 7 DAYS A WEEK****

Description

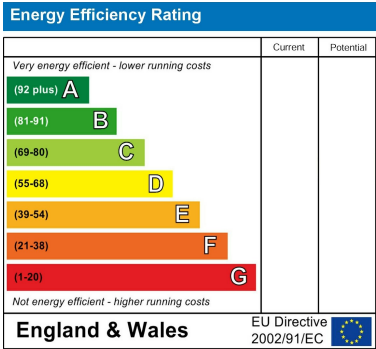
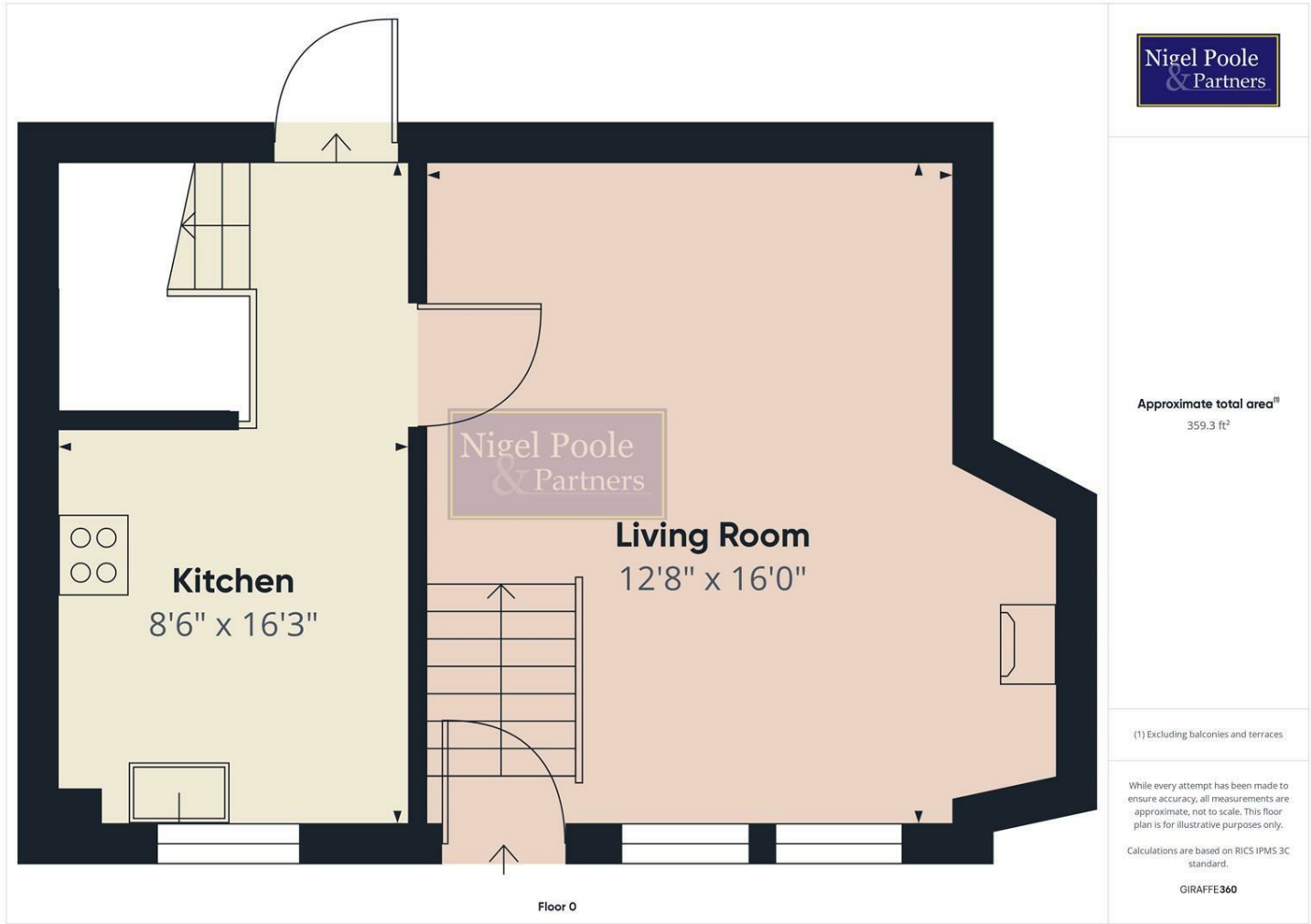
****GORGEOUS GRADE II LISTED TWO BEDROOM CHARACTER COTTAGE IN THE EVER POPULAR HARVINGTON**** The Malt House possesses a charming and characteristic aura accompanied by its exposed walls and robust timber ceilings. It internally boasts a lounge with an impressive stone inglenook fireplace, fully fitted modern kitchen, 2 bedrooms, newly fitted family bathroom and character features throughout. Externally the property benefits from a detached secluded garden accessible at the rear along a short distanced pathway.

Directions





Floor plans



I Port Street
Evesham
Worcestershire
WR11 3LA
07932803042
leo.cooper@nigelpoolestateagents.co.uk