



|.

Forest Fields | South Littleton | Evesham | WR11 8TQ

£135,000





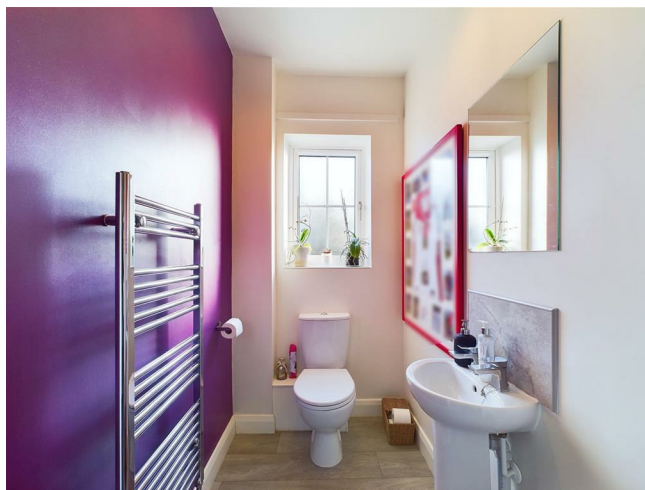
## Key features

- SHARED OWNERSHIP 50%
- Immaculate condition throughout
- 2 double bedrooms
- Fabulous views
- Desirable location
- Off-street parking for 2+ cars
- \*\*VIEWING AVAILABE 7 DAYS A WEEK\*\*

## Description

\*\*BEAUTIFULLY PRESENTED - MODERN & CHIQUÉ 2 BEDROOM SHARED OWNERSHIP (50%) HOME IN THE EVER POPULAR SOUTH LITTLETON\*\* Internally the property boasts 2 double bedrooms, family bathroom, lounge, kitchen diner, downstairs wc. Externally the property benefits from off-street parking for 2 cars, a well maintained rear garden with rear/side access and fabulous countryside views.

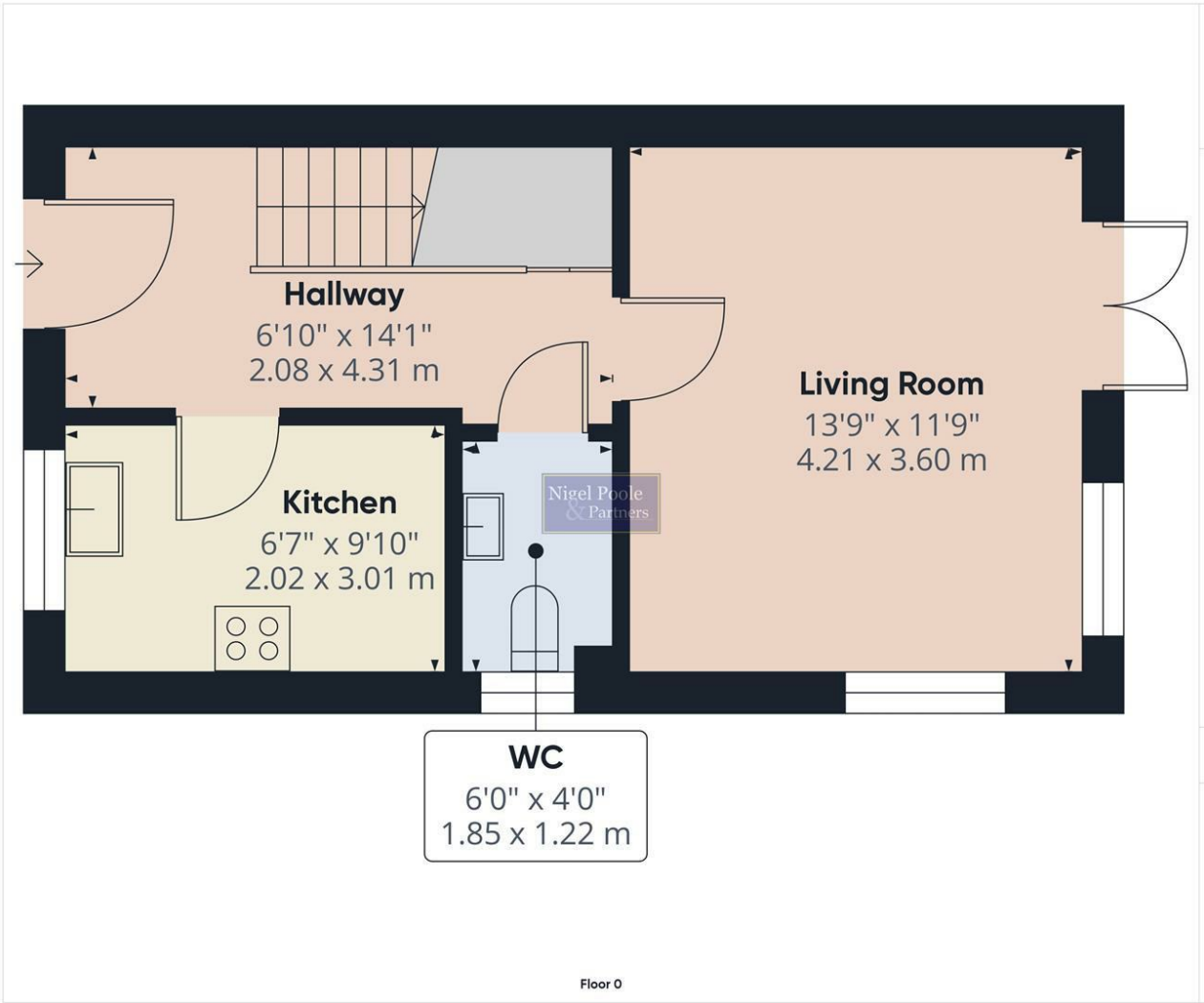
## Directions








Floor plans



Energy Efficiency Rating		
	Current	Potential
Very energy efficient - lower running costs		
(92 plus) A		
(81-91) B		
(69-80) C		
(55-68) D		
(39-54) E		
(21-38) F		
(1-20) G		
Not energy efficient - higher running costs		
England & Wales		EU Directive 2002/91/EC 



I Port Street  
Evesham  
Worcestershire  
WR11 3LA  
07932803042  
leo.cooper@nigelpoolestateagents.co.uk