

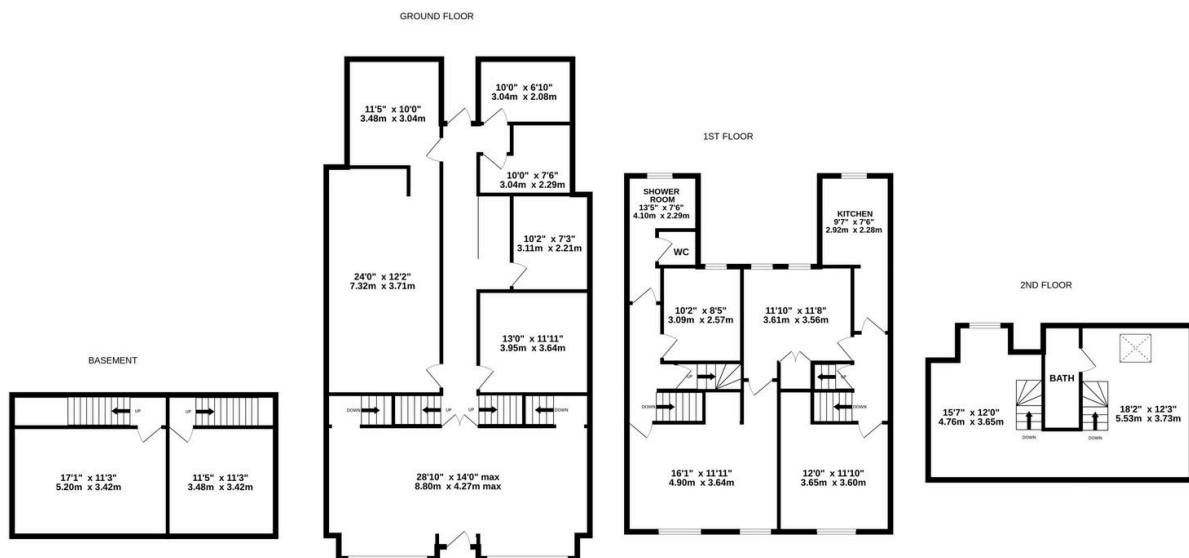
Ecclesall Road

Guide Price £600,000

🛏 6 🍽 3 🛋 2



- PRIME LOCATION
- NEARLY 3,000 SQ FT
- MIXED-USE OR RESIDENTIAL
- SPLIT SERVICES
- RARE OPPORTUNITY
- REDEVELOPMENT OPPORTUNITY
- DOUBLE FRONTED
- SAME OWNERS FOR 45 YEARS
- HIGH RENTAL COMMAND
- ENDLESS POSSIBILITIES



Whilst every attempt has been made to ensure the accuracy of the floorplan contained here, measurements of doors, windows, rooms and any other items are approximate and no responsibility is taken for any error, omission or mis-statement. This plan is for illustrative purposes only and should be used as such by any prospective purchaser. The services, systems and appliances shown have not been tested and no guarantee as to their operability or efficiency can be given.
Made with Metropix ©2025

Rare opportunity to transform a landmark double-fronted building on Sheffield's Golden Mile. Endless potential for luxury apartments or a prime mixed-use scheme in an unrivalled, high-demand location.