




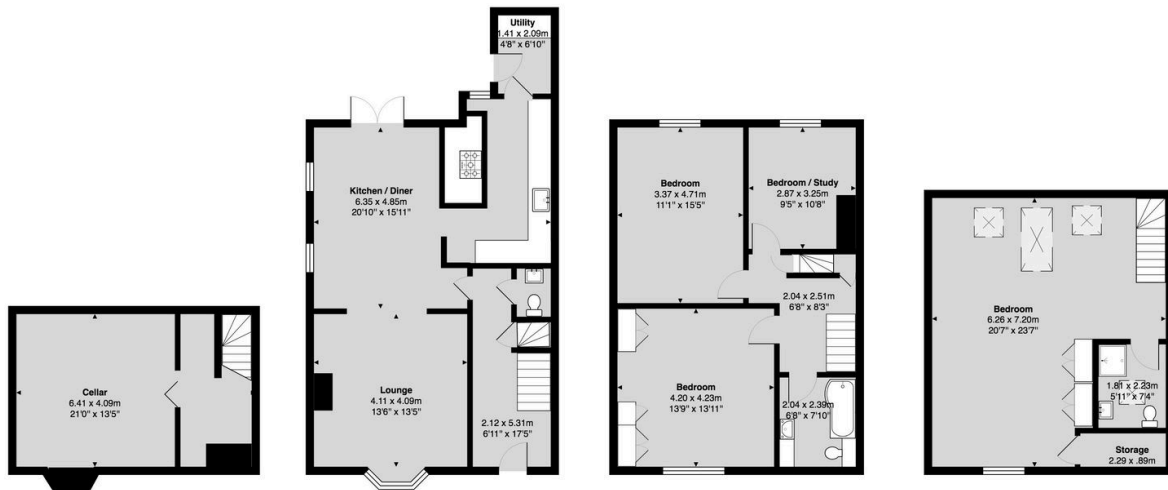
Rustlings Road

Guide Price £775,000

 4  2  2



- Victorian Semi-Detached Family Home
- Retaining Period Features & Character
- Fabulous Views Overlooking Endcliffe Park
- Stylishly Presented Throughout
- Good Commuter Links
- Open Plan Dining Kitchen
- 4 Double Bedrooms & 2 Bathrooms
- Sought After Location
- Private South Facing Garden
- Excellent Schools Catchment Area



All measurements are approximate and for display purposes only
Total Area: 192.5 m² ... 2072 ft²

Nestled in the heart of Sheffield's leafy suburbs, Rustlings Road is widely regarded as one of the city's most desirable addresses. Situated directly opposite Endcliffe Park, this impressive period, stone-built family home combines classic character with modern living.