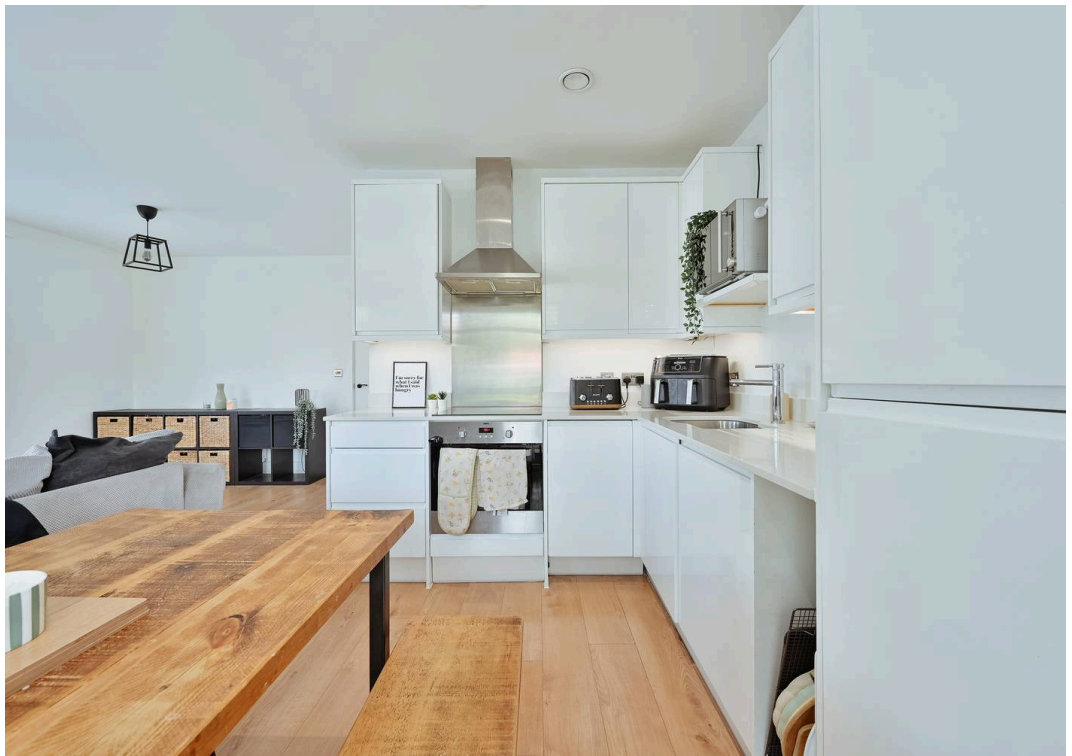




31 Chess Court, Heysham Drive – WD19 6AF  
£365,000









## 31 Chess Court

Heysham Drive, Watford

Stylish 2-bed ground floor apartment in peaceful development with modern open-plan living. Master bedroom with natural light, second bedroom for versatility. Two parking spaces, shared ownership. Desirable location near amenities ideal for families or professionals. Council Tax band: C

Tenure: Leasehold

EPC Energy Efficiency Rating: B

EPC Environmental Impact Rating: B

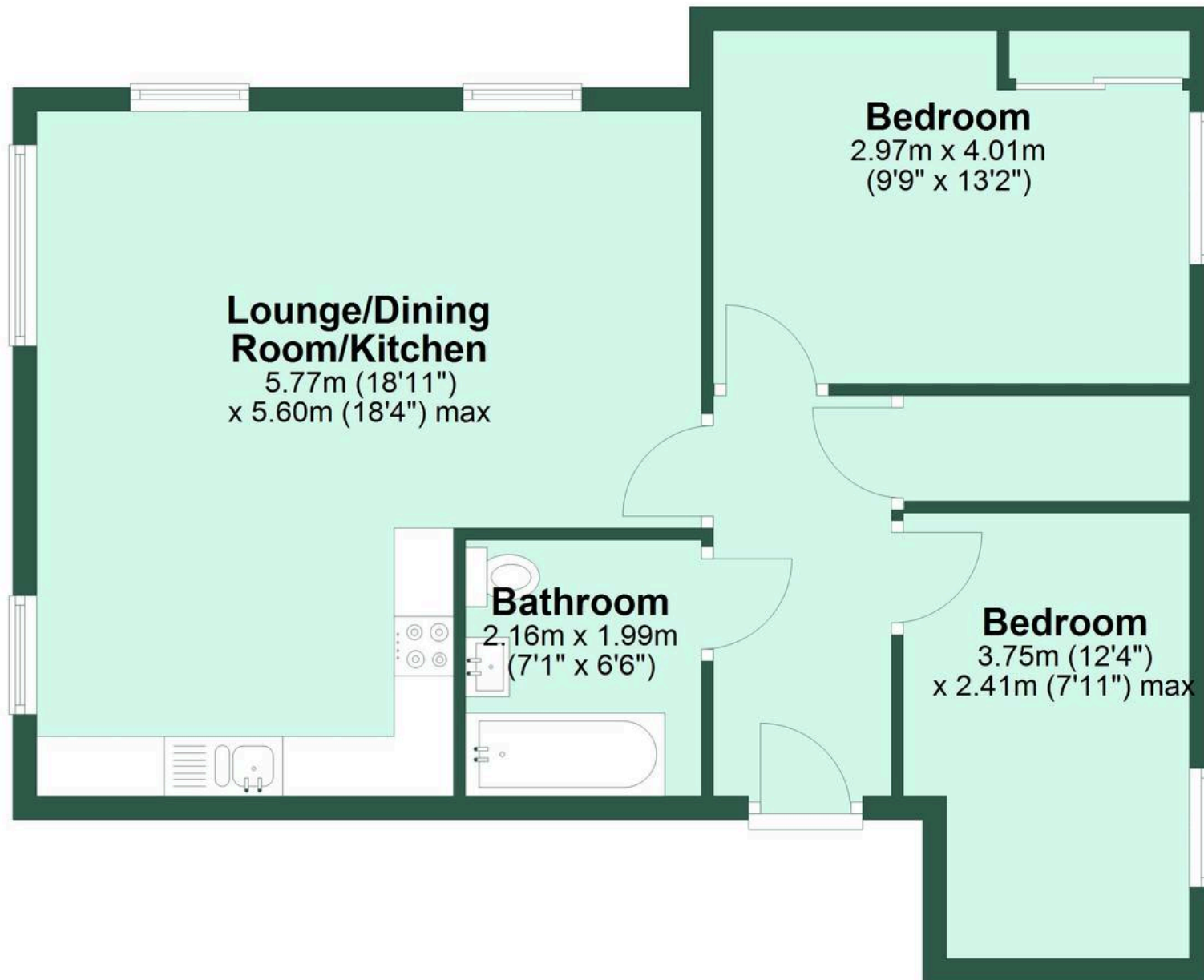
- STYLISH GROUND FLOOR APARTMENT
- SHUTTER BLINDS FITTED
- OPEN PLAN LOUNGE/KITCHEN
- SITUATED IN A QUIET DEVELOPMENT
- TWO ALLOCATED PARKING SPACES
- SHARED OWNERSHIP (Terms Apply)





## Ground Floor

Approx. 61.5 sq. metres (662.2 sq. feet)



Total area: approx. 61.5 sq. metres (662.2 sq. feet)