



16 Filton House Oxhey Drive, Watford – WD19 7SQ
£230,000





16 Filton House Oxhey Drive

Watford

Stunning 1-bed flat with private balcony near Carpenders Park Station. Separate lounge, well-appointed kitchen, ideal for first-time buyers/investors. Outdoor space for al-fresco dining.

Council Tax band: B

Tenure: Leasehold

EPC Energy Efficiency Rating: D

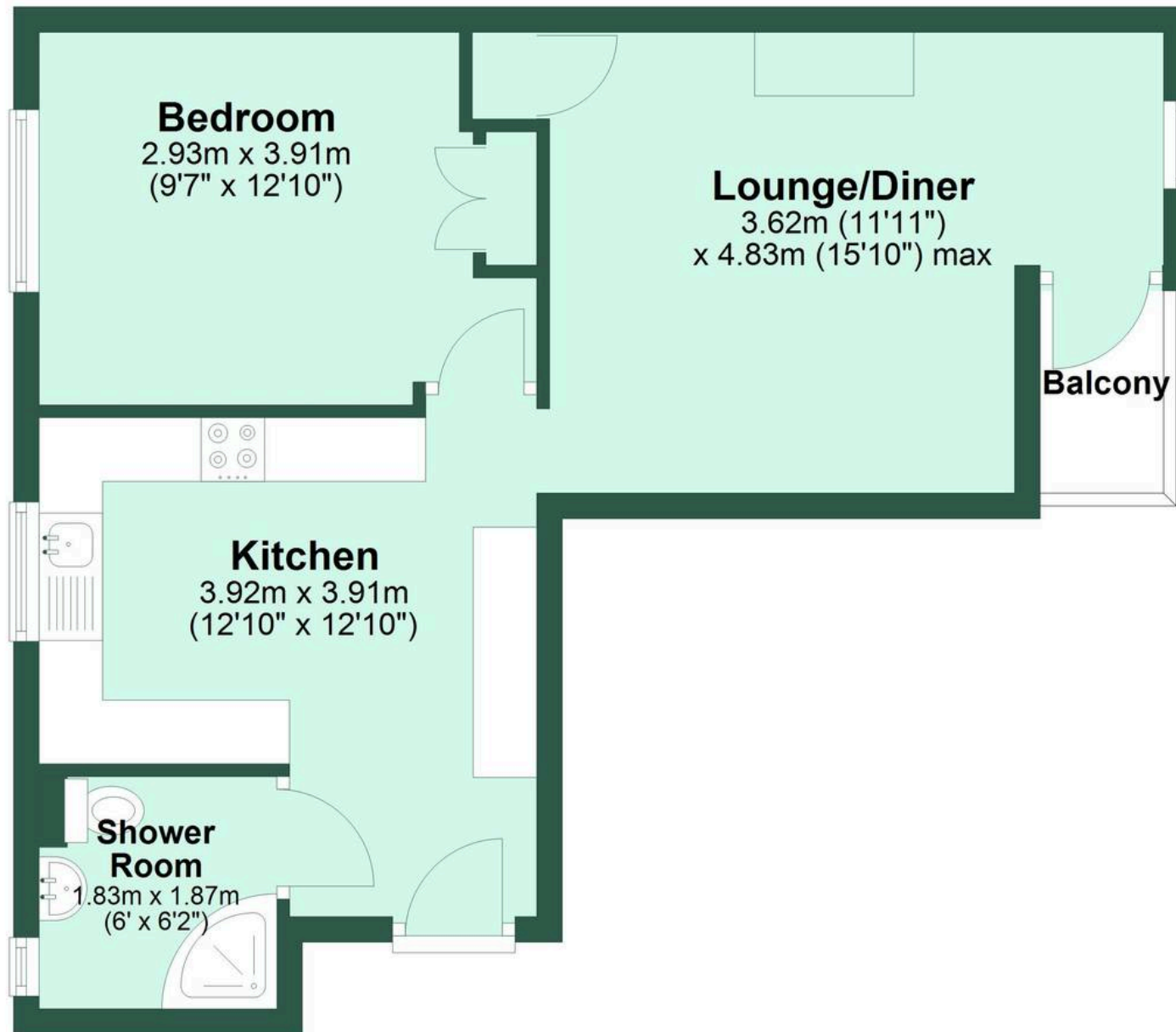
EPC Environmental Impact Rating: D

- ONE BEDROOM (2ND FLOOR)
- BALCONY
- STUNNING CONDITION
- CLOSE TO CARPENDERS PARK STATION
- SEPARATE LOUNGE TO KITCHEN
- IDEAL FOR FIRST TIME BUYERS OR INVESTMENT
- SHOPS & AMENITIES NEARBY



Second Floor

Approx. 44.3 sq. metres (476.5 sq. feet)



Total area: approx. 44.3 sq. metres (476.5 sq. feet)