



12 Sleaford Green, Watford – WD19 7EB  
£425,000



## 12 Sleaford Green

Watford, Watford

CASH BUYER ONLYS. Fully refurbished 3-bed semi-detached home in South Oxhey with brand new kitchen and bathroom fittings. Large corner plot garden and ample parking. Move-in ready gem close to Carpenders Park Station.

Council Tax band: A

Tenure: Freehold

EPC Energy Efficiency Rating: D

EPC Environmental Impact Rating: D

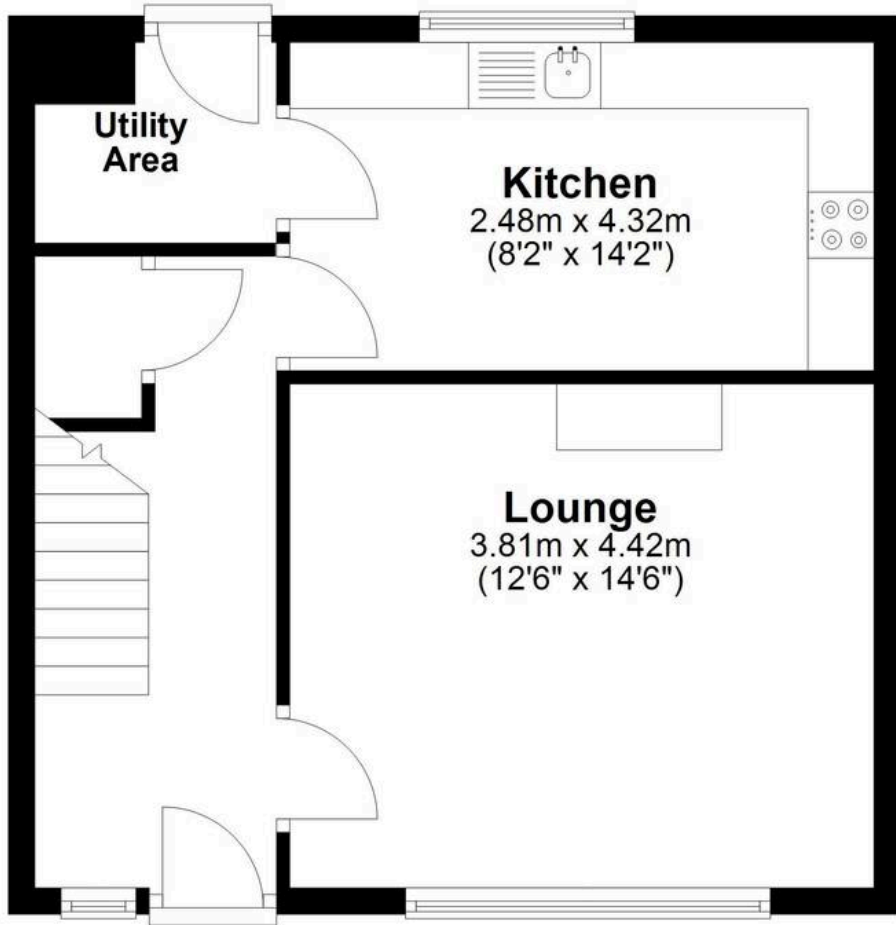
- SEMI DETACHED HOUSE
- FULLY REFURBISHED
- CLOSE TO CARPENDERS PARK STATION
- LARGE CORNER PLOT GARDEN
- MOVE STRAIGHT IN
- BRAND NEW KITCHEN & BATHROOM





## Ground Floor

Approx. 40.3 sq. metres (434.1 sq. feet)



## First Floor

Approx. 41.2 sq. metres (443.7 sq. feet)



Total area: approx. 81.5 sq. metres (877.8 sq. feet)



## Kingsley Estates

75 Hayling Road, Watford - WD19 7BN

01923 862 863 • [Info@kingsley-estates.co.uk](mailto:Info@kingsley-estates.co.uk) • [www.kingsley-estates.co.uk](http://www.kingsley-estates.co.uk)

