



The Knightley

4 bedroom home

King James' Park

Newmarket CB8 7XL | 01638 438202

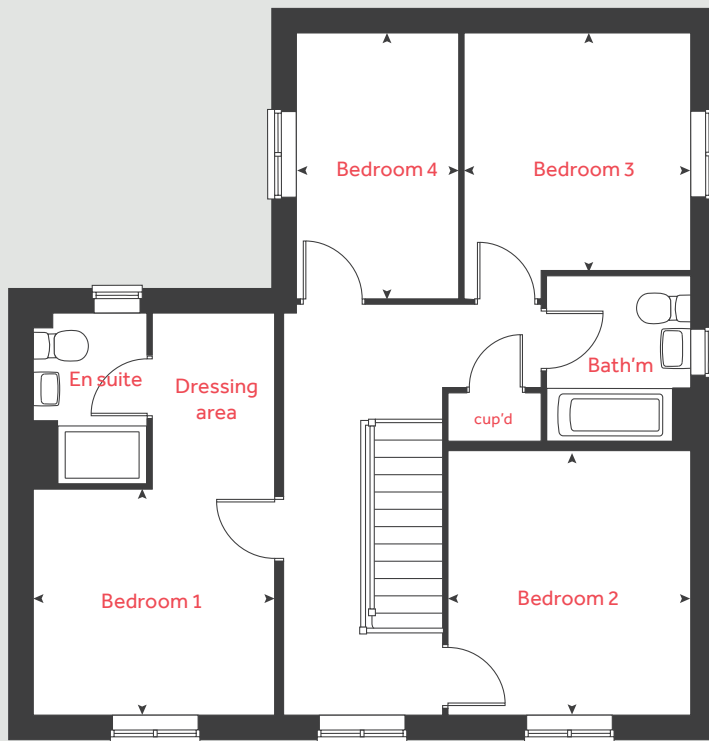
lindenhomes.co.uk

Linden
HOMES

The Knightley

4 bedroom home

First floor



Ground floor

Kitchen / dining area

5.25m x 3.20m 17' 2" x 10' 5"

Living room

5.36m x 3.22m 17' 7" x 10' 7"

Family room

3.93m x 3.21m 12' 10" x 10' 5"

First floor

Bedroom 1

3.20m x 2.98m 10' 6" x 9' 10"

Bedroom 2

3.58m x 3.21m 10' 7" x 11' 9"

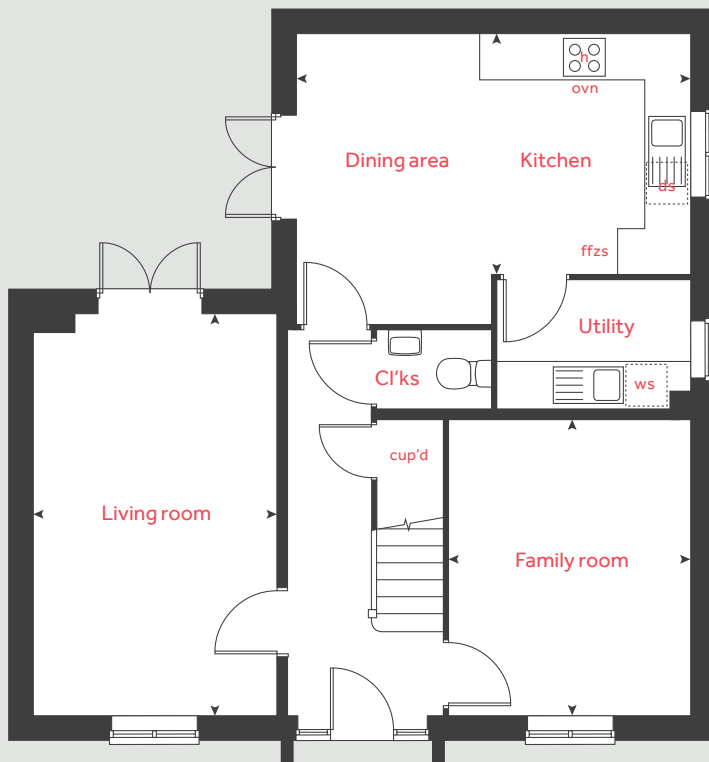
Bedroom 3

3.17m x 3.01m 10' 5" x 9' 11"

Bedroom 4

3.52m x 2.15m 11' 7" x 7' 1"

Ground floor



| | | | |
|-----|-----------------------|-------|----------------------|
| h | hob | ffzs | fridge freezer space |
| ovn | oven | cup'd | cupboard |
| ws | washing machine space | ◀ ▶ | measuring points |
| ds | dishwasher space | | |

The Knightley | King James' Park |

The floorplan has been produced for illustrative purposes only. Room sizes shown are between arrow points as indicated on plan. The dimensions have tolerances of + or - 50mm and should not be used other than for general guidance. If specific dimensions are required, enquiries should be made to the sales consultant. The floor plans shown are not to scale. Measurements are based on the original drawings. Slight variations may occur during construction.

The illustrations shown are computer generated impressions of how the property may look and are indicative only. External details or finishes may vary on individual plots and homes may be built in either detached or attached styles depending on the development layout. Exact specifications, window styles and whether a property is left or right-handed may differ from plot to plot. Please speak to our sales consultant for specific plot details.

Produced by Vistry Group Design Studio.

When you have finished with this leaflet please recycle it.

DS13165 / 05.25

Linden
HOMES