

BENSON

INTERNATIONAL

ACQUISITION | SALES | INVESTMENT



24 Hesper Mews

Earls court, London, SW5 0HH

Offers in excess of £2,850,000

This stunning mews house, nestled in a quiet and sought-after location in the heart of London, offers a perfect blend of contemporary design and timeless appeal.

Spread over three floors, the property boasts stylish, light-filled interiors that have been thoughtfully designed for modern living.

Enter into a generous hallway leading to a large, open-plan living and dining area—perfect for both relaxed everyday living and elegant entertaining. The sleek, fully fitted open-plan kitchen is equipped with high-end appliances, ideal for culinary enthusiasts. There is also a guest w/c and utility room.

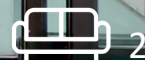
The first floor is home to three bedrooms, each with ample storage. The principle suite offers a serene retreat with a luxurious en-suite bathroom featuring contemporary finishes. A second well-appointed bathroom serves the two additional bedrooms.

The top floor features a large, flexible entertaining space—perfect for a home office, media room, or additional lounge area. Sliding glass doors open up to a private roof terrace, providing the ultimate outdoor private oasis with a fitted kitchenette area. It's an ideal setting for al fresco dining, relaxing in the sun, or enjoying evening cocktails.

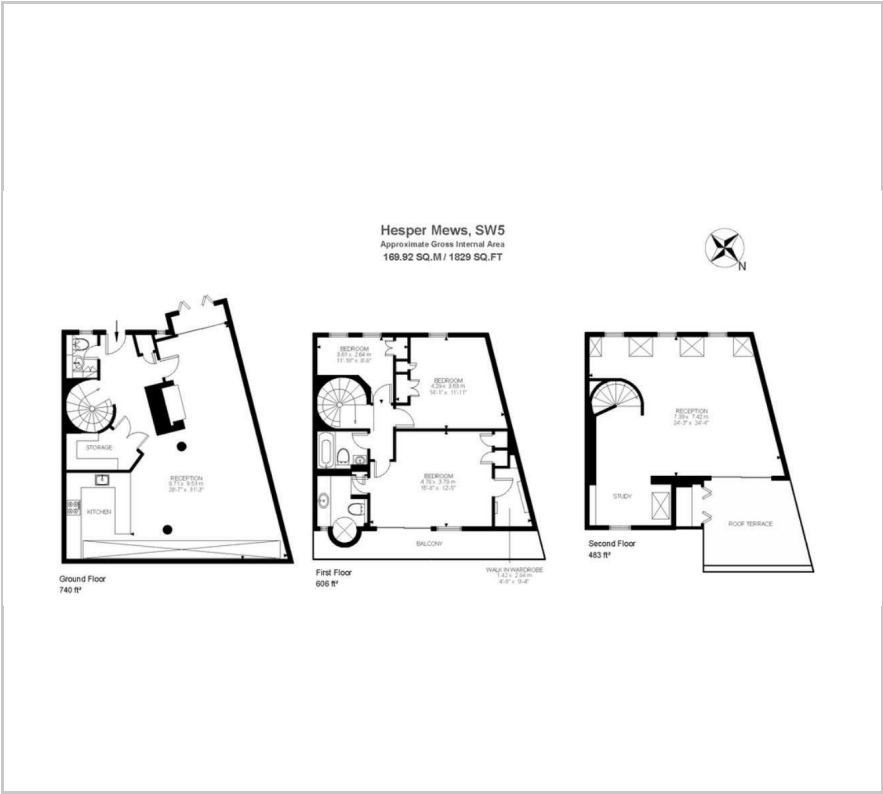
Key Features:

Viewing

Please contact our Mayfair Office on +44(0)20 7268 4892 if you wish to arrange a viewing appointment for this property or require further information.



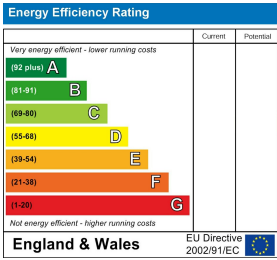
Floor Plan



Area Map



Energy Efficiency Graph



These particulars, whilst believed to be accurate are set out as a general outline only for guidance and do not constitute any part of an offer or contract. Intending purchasers should not rely on them as statements of representation of fact, but must satisfy themselves by inspection or otherwise as to their accuracy. No person in this firms employment has the authority to make or give any representation or warranty in respect of the property.