

BENSON

INTERNATIONAL

ACQUISITION | SALES | INVESTMENT



BENSON

Cran-Lea Longsplatt

Kingsdown, Box, SN13 8DF

Guide price £500,000

Offered chain free with a legal pack in the place to ensure a quick sale, this lovely bungalow in the heart of the picturesque countryside, just a short distance from the historic city of Bath, offers an exceptional opportunity to create your dream home.

With a generous plot of land and breathtaking views, the property is full of potential, waiting for someone with vision to bring it to life. While the bungalow does require some work, it presents an excellent foundation for renovation and modernisation, with ample space to extend and reimagine the layout.

The current layout includes three well-proportioned bedrooms, cosy living spaces, and the potential for a variety of customisations.

With the right touches, this bungalow could be transformed into a beautiful, contemporary haven.

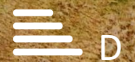
The surrounding gardens provide the perfect setting for outdoor entertaining or relaxing, and there's plenty of room to create additional living areas or even a private garden retreat.

Whether you're looking to expand the living space, add a conservatory, or craft your own countryside escape, this property offers the perfect canvas to do so.

Viewing

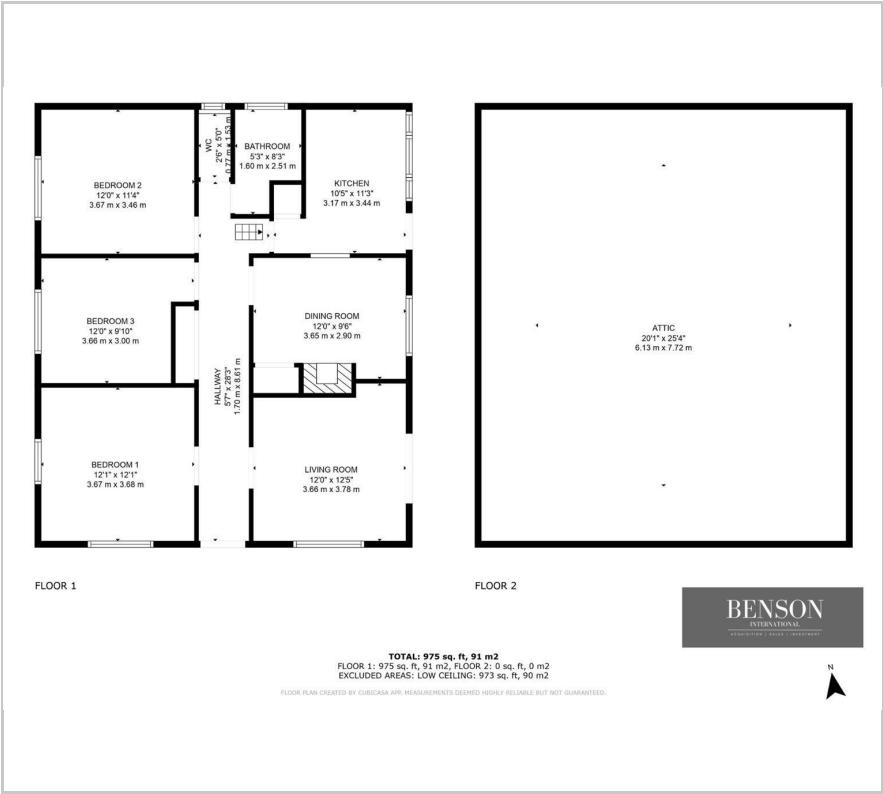
Please contact our Mayfair Office on +44(0)20 7268 4892

If you wish to arrange a viewing appointment for this property or require further information.



BENSON

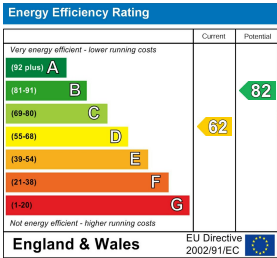
Floor Plan



Area Map



Energy Efficiency Graph



These particulars, whilst believed to be accurate are set out as a general outline only for guidance and do not constitute any part of an offer or contract. Intending purchasers should not rely on them as statements of representation of fact, but must satisfy themselves by inspection or otherwise as to their accuracy. No person in this firms employment has the authority to make or give any representation or warranty in respect of the property.