





## 62 Brude's Hill, Inverness, IV3 8AT

Offers Over £260,000

🛏 3 🍳 3 🛋 2



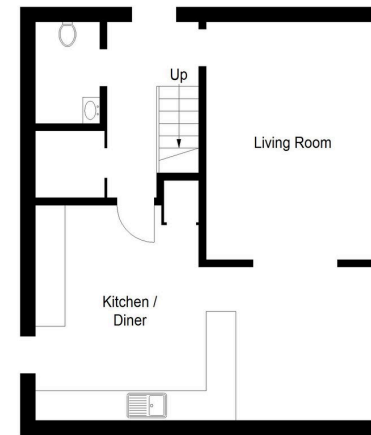
- MODERN, OPEN PLAN LIVING ACCOMMODATION
- THREE DOUBLE BEDROOMS
- OFF-STREET DRIVEWAY PARKING
- VIEWS ACROSS INVERNESS
- POPULAR DEVELOPMENT IN LEACHKIN
- WELL PRESENTED THROUGHOUT
- MASTER WITH EN-SUITE SHOWER ROOM
- OUTBUILDING
- VIEWING HIGHLY RECOMMENDED



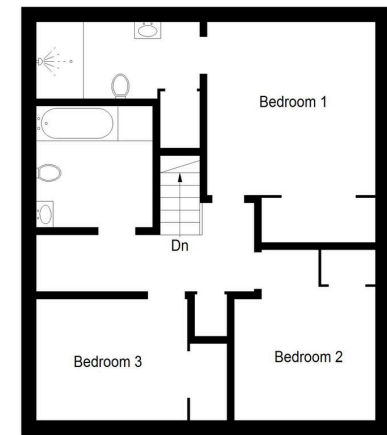




This deceptively spacious property enjoys bright, open plan accommodation and is very well presented throughout. Located in the popular area of Leachkin and enjoying views across the city, this property would be ideal for a growing family with early viewing highly recommended.



Ground Floor



First Floor

Illustration for identification purposes only, measurements are approximate, not to scale. floorplansUsketch.com © (ID1208751)