






**PAUL COUTTS**  
ESTATE AGENCY

Paul Coutts Estate Agency Ltd  
102 Brudes Hill  
Inverness  
IV3 8AT



**Cala, Milton, Drumnadrochit, IV63 6UA**

**Offers Over £490,000**

 5  3  3



- PICTURESQUE VILLAGE OF MILTON
- STUNNING VIEWS OF COUNTRYSIDE AND LOCH NESS
- GENEROUS LIVING ACCOMMODATION
- LARGE DETACHED GARAGE
- SPACIOUS FAMILY HOME
- ON OUTSKIRTS OF DRUMNADROCHIT & 16 MILES FROM INVERNESS
- APPROX 1 ACRE OF GARDEN GROUNDS
- 6 DOUBLE BEDROOMS
- VIEWING HIGHLY RECOMMENDED







Nestled into the hillside of the beautiful hamlet of Milton near Drumnadrochit, this well proportioned family home enjoys generous living space, five double bedrooms and could easily provide self contained annexe accommodation. The beautiful grounds extend to approximately 1 acre and boast the most beautiful views of the surrounding countryside and the world famous Loch Ness

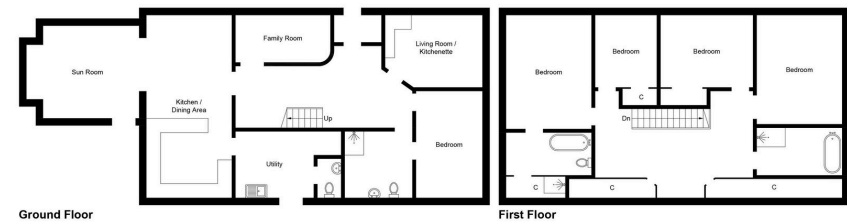


Illustration for identification purposes only, measurements are approximate, not to scale. Fourlabs.co © (ID1191469)