



Your Logo

24 Pinewood Court, Inverness, IV2 6GZ

Offers Over £155,000

🛏 2 🚿 1 🛋 1



- HOME REPORT UNDER EPC LINK
- MODERN FIRST FLOOR FLAT LINK
- SOUGHT AFTER LOCATION
- BRIGHT AND WELL PRESENTED
- WALK-IN CONDITION
- DECORATED IN NEUTRAL TONES
- ATTRACTIVE OUTLOOK
- RESIDENT AND GUEST PARKING
- IDEAL FOR VARIETY OF BUYERS
- VIEWING RECOMMENDED



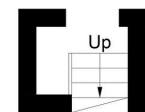
This well presented first floor flat is located in the sought after Miltonof Leys area on the outskirts of Inverness. Ideal for first time buyers or as an investment property, this modern flat boasts bright accommodation, two double bedrooms and a pleasing outlook.



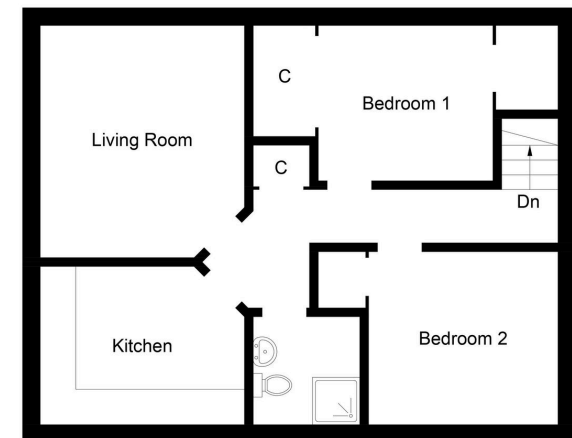
Attic Space



Bike Store



Ground Floor



First Floor

Illustration for identification purposes only. measurements are approximate, not to scale. Fourlabs.co © (ID1171099)