

# FERN LODGE

## ASHTON

 **THE HEATON**  
3 BEDROOM HOME

 **THE STAMFORD**  
3 BEDROOM HOME

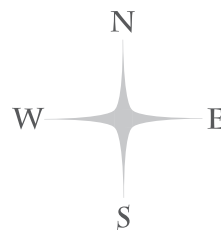
 **THE STAMFORD A**  
3 BEDROOM HOME

 **THE STAMFORD B**  
3 BEDROOM HOME

 **THE CALDERDALE**  
3 BEDROOM HOME

 **THE PRESTWICH**  
4 BEDROOM HOME

 **THE SONBURY**  
4 BEDROOM HOME



The site plan is drawn to show the relative position of individual properties. NOT TO SCALE. This is a two dimensional drawing and will not show land contours and gradients, boundary treatments, landscaping or local authority street lighting. Footpaths subject to change. For details of individual properties and availability please refer to your Sales Consultant.

**NHBC**

**CONSUMER  
CODE FOR  
HOME BUILDERS**  
[www.consumercode.co.uk](http://www.consumercode.co.uk)



# THE STAMFORD B

THREE BEDROOM HOME



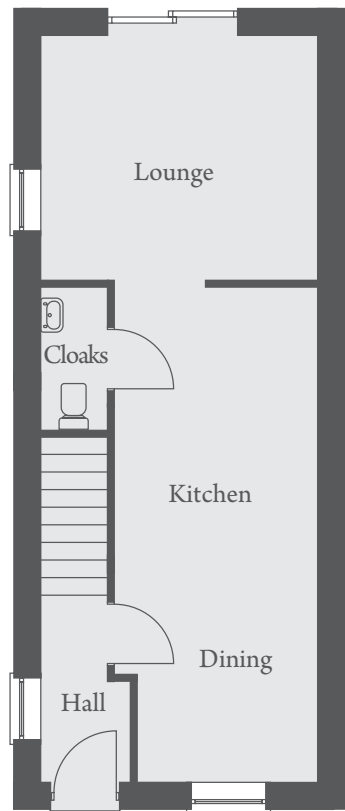
Images, photographs and CGI's are representative only and are not plot specific. External finishes, landscaping and configuration may vary from plot to plot, Wiggett Homes reserves the right to amend and update the specification without prior notification. Please refer to your Sales Consultant for plot specific details.

# THE STAMFORD B



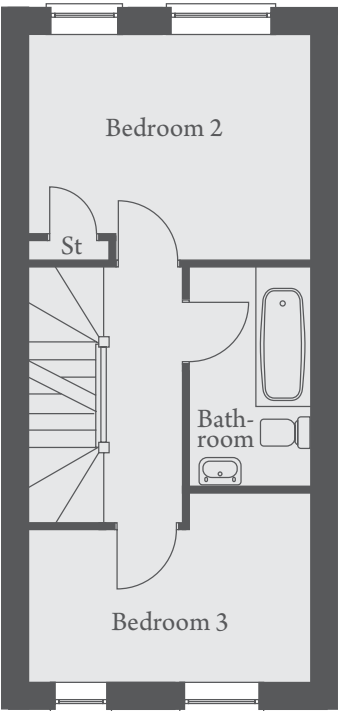
## THREE BEDROOM HOME

Plots 3, 4, 7, 10, 19, 20, 21, 22, 27, 28 & 32



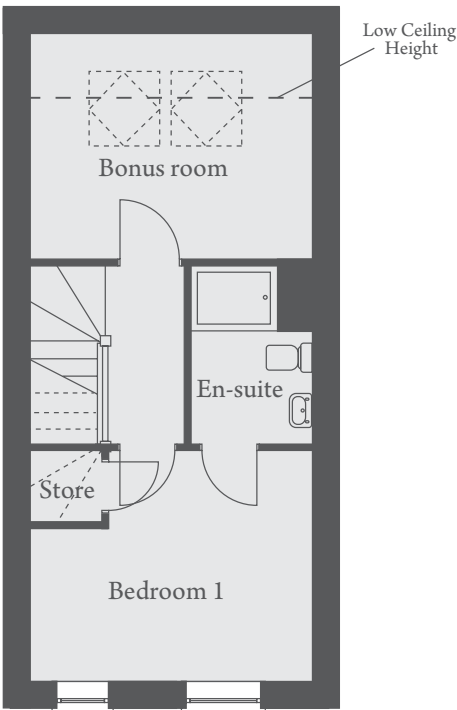
### GROUND FLOOR

Lounge .....	3714 x 3272mm.....	12'2" x 10'9"
Kitchen/Dining.....	2400 x 6605mm.....	7'10" x 21'8"



### FIRST FLOOR

Bedroom 2 ....	3732 x 3050mm(max) .....	12'3" x 10'0"(max)
Bedroom 3 ....	3732 x 2613mm.....	12'3" x 8'7"



### SECOND FLOOR

Bedroom 1 .....	3732 x 3167mm .....	12'3" x 10'5"
Bonus room.....	3732 x 3050mm .....	12'3" x 10'0"

Landscaping and configuration may vary from plot to plot. Please refer to Sales Consultant for further details. All dimensions are approximate and should not be used for carpet sizes, appliance spaces, or furniture.  
We operate a policy of continuous improvement and individual features such as kitchen and bathroom layouts, doors, windows, garages and elevational treatments may vary from time to time.  
Consequently these particulars should be treated as general guidance only and do not constitute a contract, part of a contract or a warranty.