

16 Regency
House
Imperial Wharf
London



16 Regency House

£2,800 PCM

Full Description

The apartment is offered unfurnished and offers an impressive living room with floor to ceiling windows, opening onto a private balcony with views towards the river, a fully equipped kitchen, master bedroom with excellent storage and en-suite shower room, second bedroom and bathroom. The development benefits from a resident's gym, 24-hour concierge, landscaped courtyards and gardens.

Residents of Imperial Wharf benefit from a wide range of nearby amenities, including cafes, restaurants, supermarkets and access to the Thames Path offering riverside walks to Chelsea Harbour and beyond. The location is well served by local bus routes and is within easy reach of Fulham Broadway and Chelsea. The Overground station gives easy access to Clapham Junction which provides direct connections to train routes both in and out of London.

Local Authority

Hammersmith and Fulham

Council Tax Band G

EPC Rating C



Contact

0208 994 5164

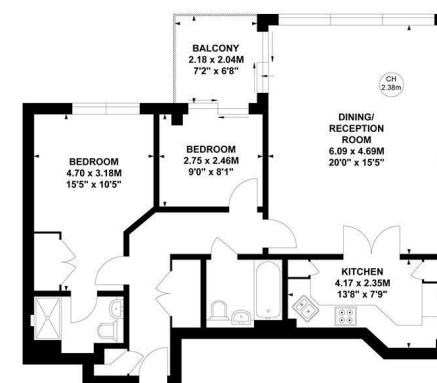
karen@xppm.co.uk

xppm.co.uk

Regency House, SW6

Approximate gross internal area
77.99 sq m / 839 sq ft

Key :
CH - Ceiling Height



Fifth Floor

Not to scale, for guidance only and must not be relied upon as a statement of fact.
All measurements and areas are approximate only