

Ranelagh
Gardens
Mansions Ranela
Gardens



Ranelagh Gardens

Mansions Ranelagh Gardens

£2 492 PCM

The flat is well presented and features an open-plan living area, spacious master bedroom with good storage and en-suite bathroom, second bedroom with fitted wardrobes and a separate shower room. The flat also opens directly onto to a south-facing communal patio area.

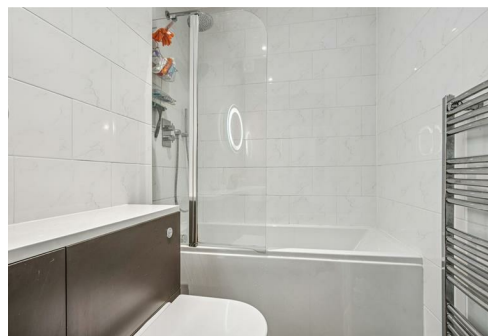
Ranelagh Gardens is nestled between New King's Road and the river in Fulham, with its range of cafes, convenience stores, Putney Bridge station and bus terminal. A broader range of shops and restaurants can be found a short stroll away in Putney High Steet.

Local Authority

London Borough of Hammersmith and Fulham

Council Tax Band D

EPC Rating D



Contact

0208 994 5164

karen@xppm.co.uk

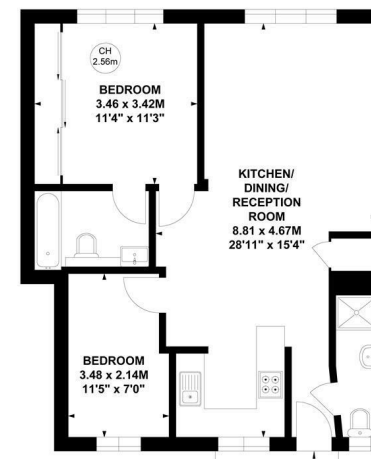
xppm.co.uk

Ranelagh Gardens Mansions, SW6

Approximate gross internal area

61.67 sq m / 664 sq ft

Key :
CH - Ceiling Height



Ground Floor

Not to scale, for guidance only and must not be relied upon as a statement of fact.
All measurements and areas are approximate only