

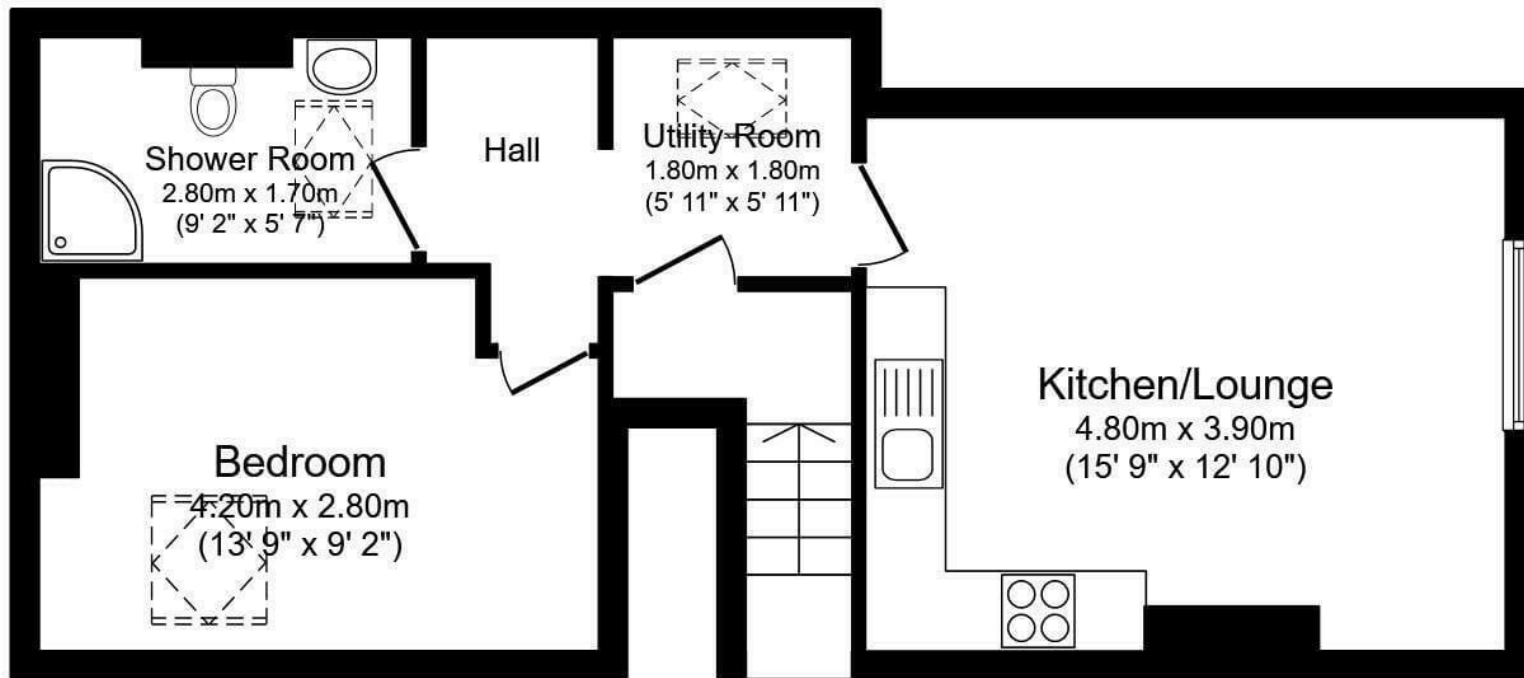


**1 Bed
Flat
located in**

Offers in the region of
£80,000




BURROWS
Residential



DIRECTIONS

CONTACT

Century 2 Business Centre Dearne Lane
Manvers
Rotherham
S63 5DP

E: info@burrowsresidential.co.uk
T: 07507 905644

This floor plan is for illustrative purposes only. It is not drawn to scale. Any measurements, floor areas (including any total floor area), openings and orientation are approximate. No details are guaranteed, they cannot be relied upon for any purpose and they do not form part of any agreement. No liability is taken for any error, omission or misstatement. A party must rely upon its own inspection, information in the data sheet and the information on the website. www.focalagent.com

| Energy Efficiency Rating | | |
|---|-------------------------|-----------|
| | Current | Potential |
| Very energy efficient - lower running costs | | |
| (92 plus) A | | |
| (81-91) B | | |
| (69-80) C | | |
| (55-68) D | 62 | 66 |
| (39-54) E | | |
| (21-38) F | | |
| (1-20) G | | |
| Not energy efficient - higher running costs | | |
| England & Wales | EU Directive 2002/91/EC | |

