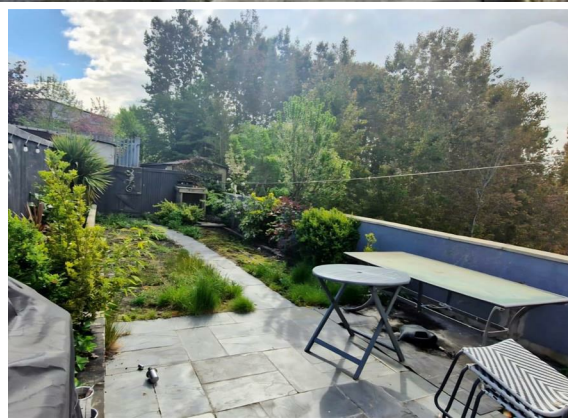


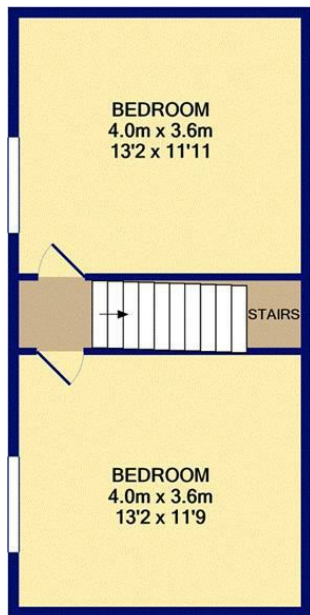


**4 Bed
House - End Terrace
located in**

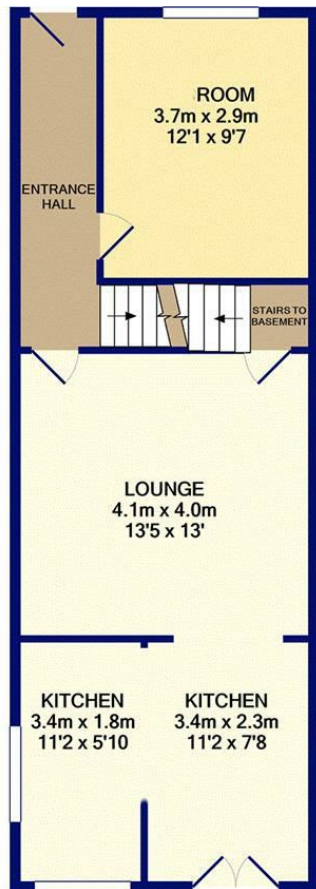
Offers in the region of
£120,000



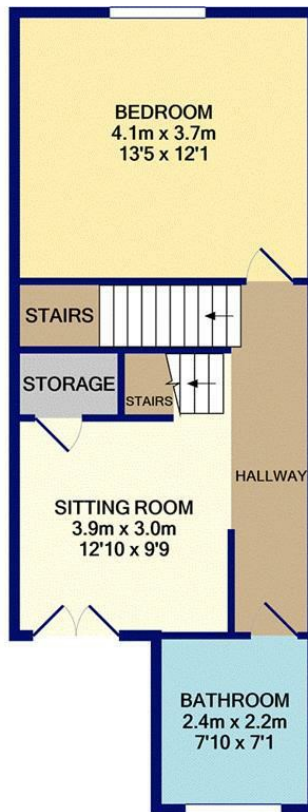

BURROWS
Residential



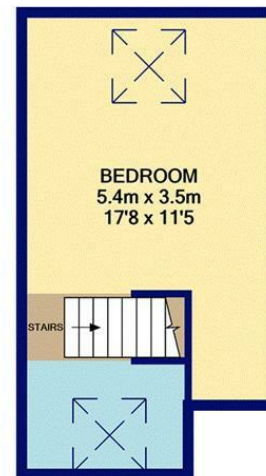
BASEMENT LEVEL
APPROX. FLOOR
AREA 33.1 SQ.M.
(356 SQ.FT.)



GROUND FLOOR
APPROX. FLOOR
AREA 49.1 SQ.M.
(529 SQ.FT.)



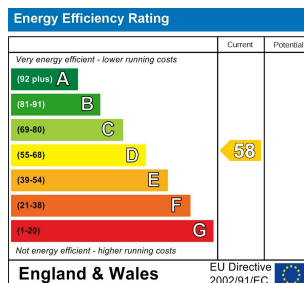
1ST FLOOR
APPROX. FLOOR
AREA 40.1 SQ.M.
(432 SQ.FT.)



2ND FLOOR
APPROX. FLOOR
AREA 20.9 SQ.M.
(225 SQ.FT.)

TOTAL APPROX. FLOOR AREA 143.3 SQ.M. (1542 SQ.FT.)

Whilst every attempt has been made to ensure the accuracy of the floor plan contained here, measurements of doors, windows, rooms and any other items are approximate and no responsibility is taken for any error, omission, or mis-statement. This plan is for illustrative purposes only and should be used as such by any prospective purchaser. The services, systems and appliances shown have not been tested and no guarantee as to their operability or efficiency can be given
Made with Metropix ©2021



DIRECTIONS

CONTACT

Century 2 Business Centre Dearne Lane
Manvers
Rotherham
S63 5DP

E: info@burrowsresidential.co.uk
T: 07507 905644

